

AEROZONE TEDI PILOT STUDY UPDATE

Bicycle & Pedestrian Advisory Council

May 15, 2026

ACTION REQUESTED

No action is requested. This item is for information and presentation.

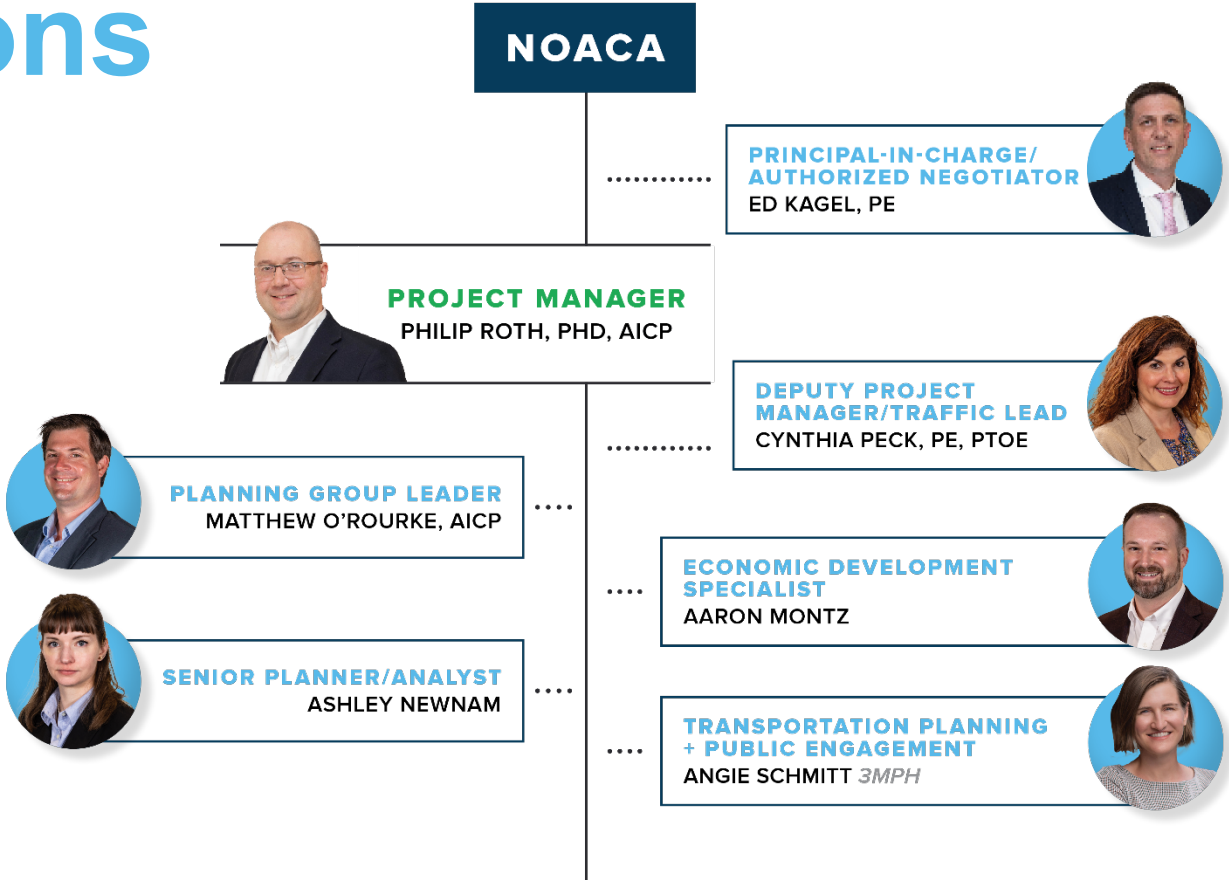
PREVIOUS ACTION

No previous action. This is the first time this study is being presented to the Transit Council.

BACKGROUND

This Transportation for Economic Development Initiative (TEDI) pilot project kicked off in June 2025.

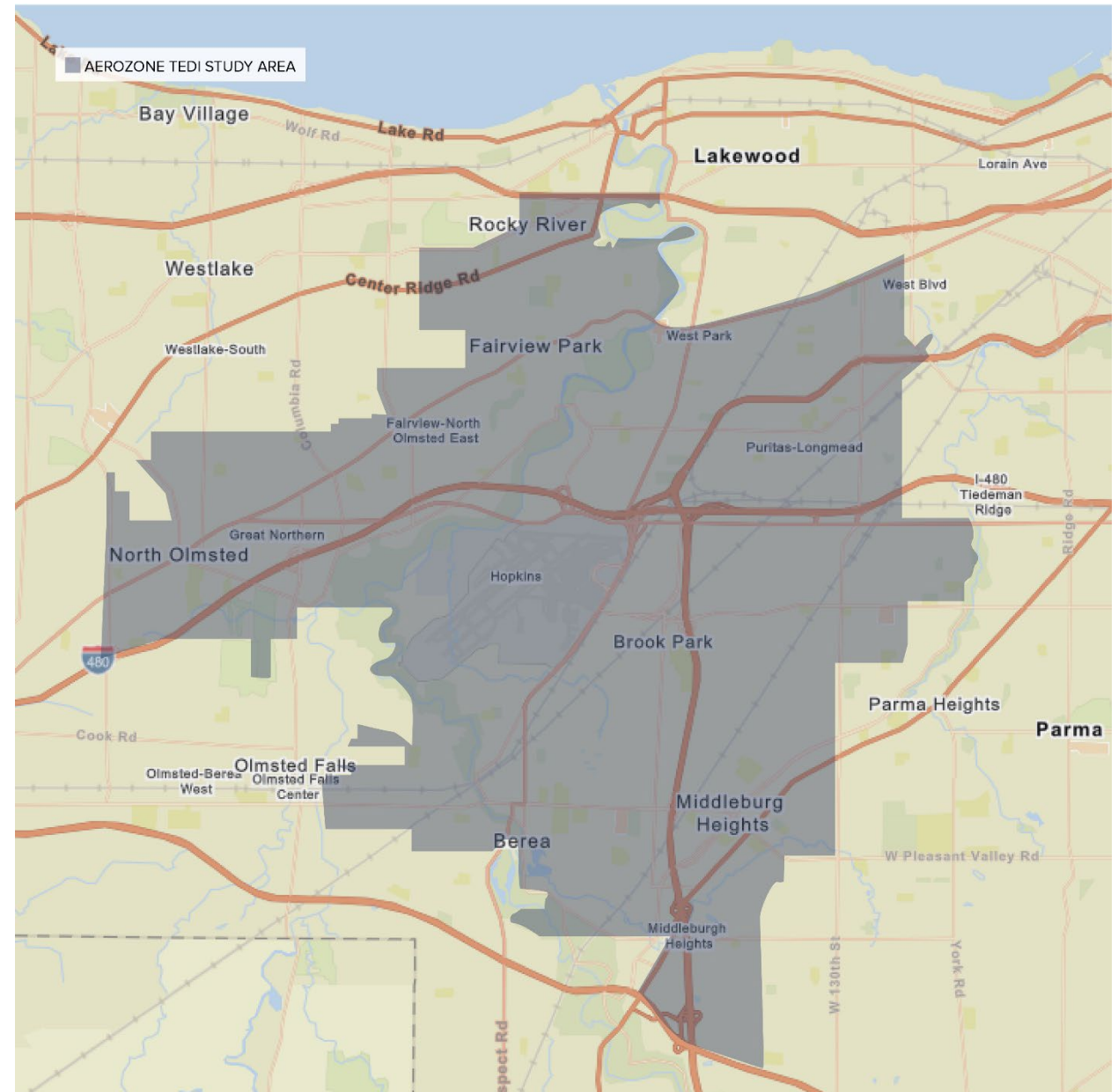
Introductions



ADDITIONAL STAFF			
SENIOR PLANNER / LEGAL EXPERT David Baird, JD, AICP	SENIOR TRAFFIC ENGINEER / MODELING Gaurav Kashyap, PE, PTOE, RSP2I	TRAFFIC ENGINEER / MODELING Rahul Rajbhara, PE, PTOE, RSP1	PLANNER / PUBLIC ENGAGEMENT / EQUITY ANALYSIS Patrica Salgado
SITE DEVELOPMENT / P3 EXPERT Josh Cribelar, PE	TRAFFIC ENGINEER Brian Sedziol, PE, PTOE Geeta Kharche	SAFETY ENGINEER Jessica Chio, PE	TRANSPORTATION PLANNING Asia Doss Mark Lynch

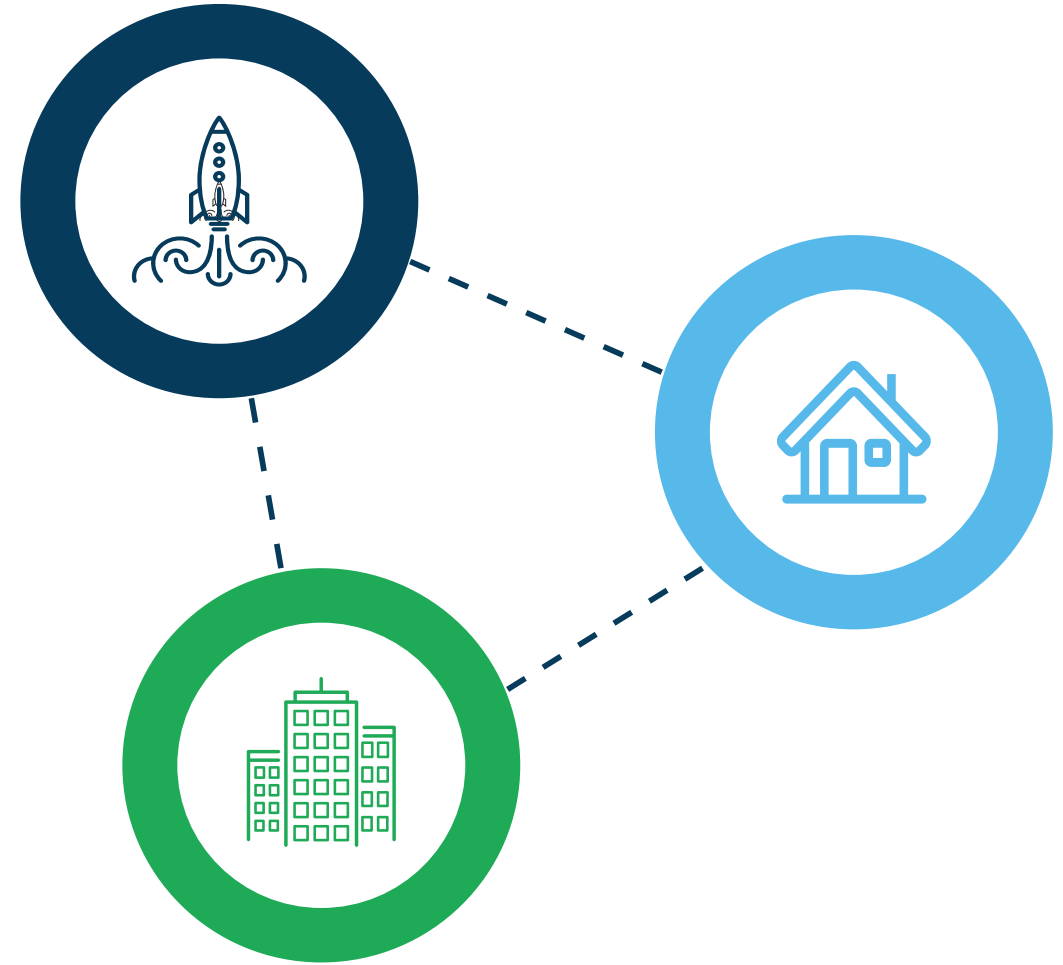
Project Overview

The Aerozone



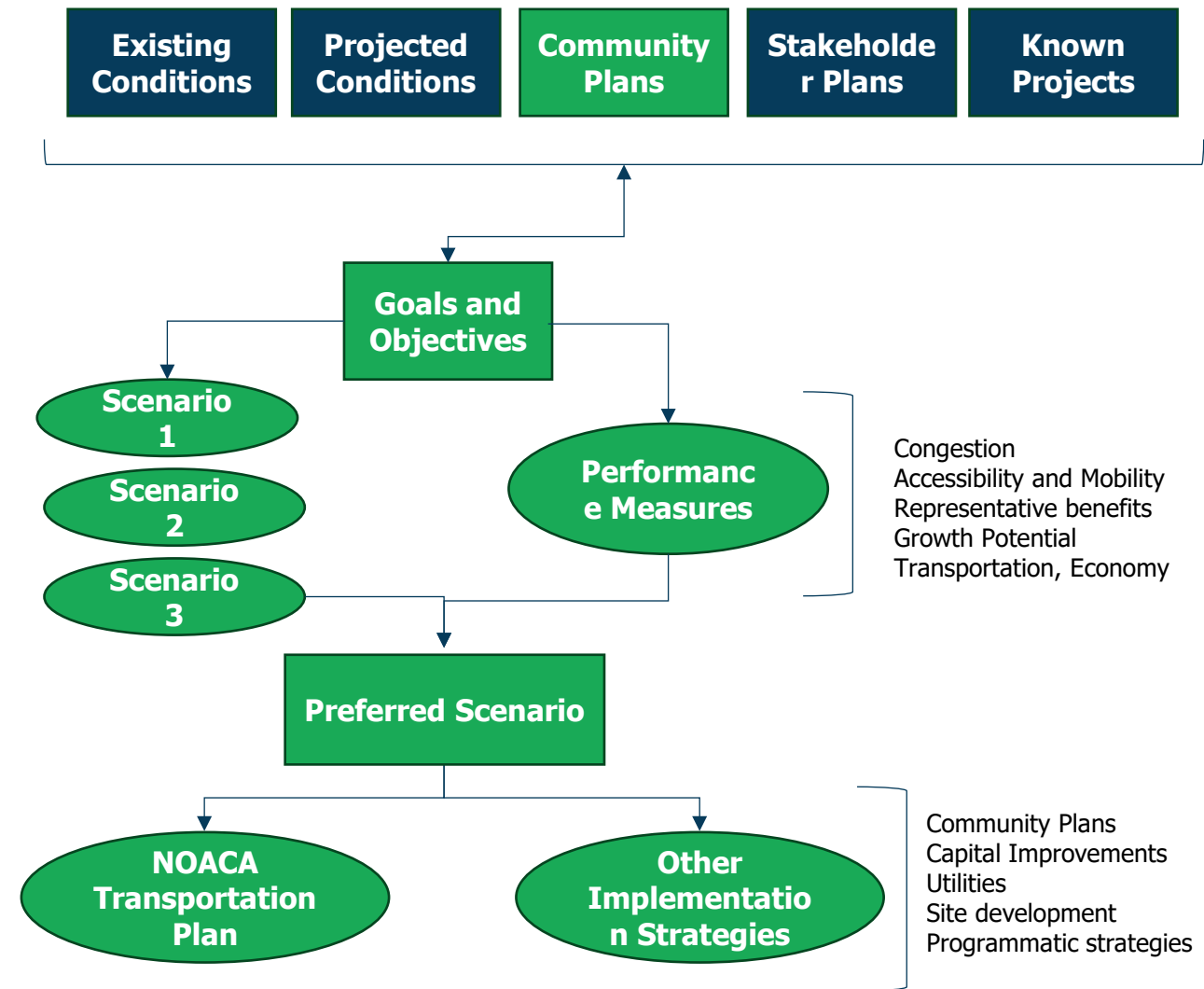
Why This Study? The Region's Challenge

- Key assets (airport, NASA, IX) are underconnected
- Mix of aging & emerging districts—fragmented land use
- Older urban areas are becoming more isolated
- Missed opportunities without coordination and investment
- The Aerozone can re-anchor growth in the region's core



What TEDI Will Deliver

- A forum for collaboration across sectors
- Deep-dive analysis of assets and gaps
- A realistic plan with projects and priorities
- Community voice through robust engagement
- Tools to align with funding and implementation



Project Components

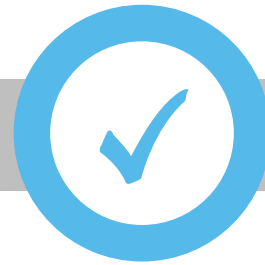
1. Existing Conditions Technical Report
2. Performance Monitoring Framework
3. Scenario and Alternatives Evaluation Report
4. Final Recommendations Report – Integrated Land Use and Transportation Plan
5. Implementation Roadmap
6. Stakeholder Engagement Summary



What Success Looks Like

A list of projects
and strategies with
broad support

Clear performance
indicators for
tracking progress



A shared vision
and brand for the
district

A roadmap to
attract investment

Greater regional
alignment and
momentum

Public Involvement

What We Heard

Public Meeting #1

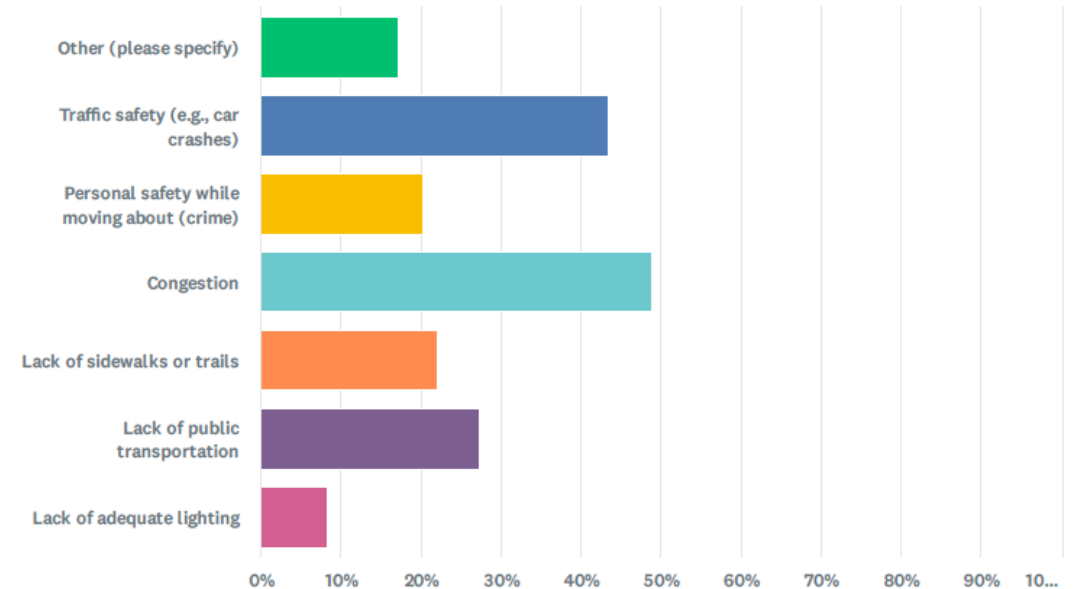
- Transportation investments
- Land use coordination
- Access improvements

Focus Groups

- Stadium impacts
- Airport decisions
- Other regional policies (e.g., high speed rail)

Q17 What is your primary concern with respect to transportation in your area? (Select up to two)

Answered: 168 Skipped: 71



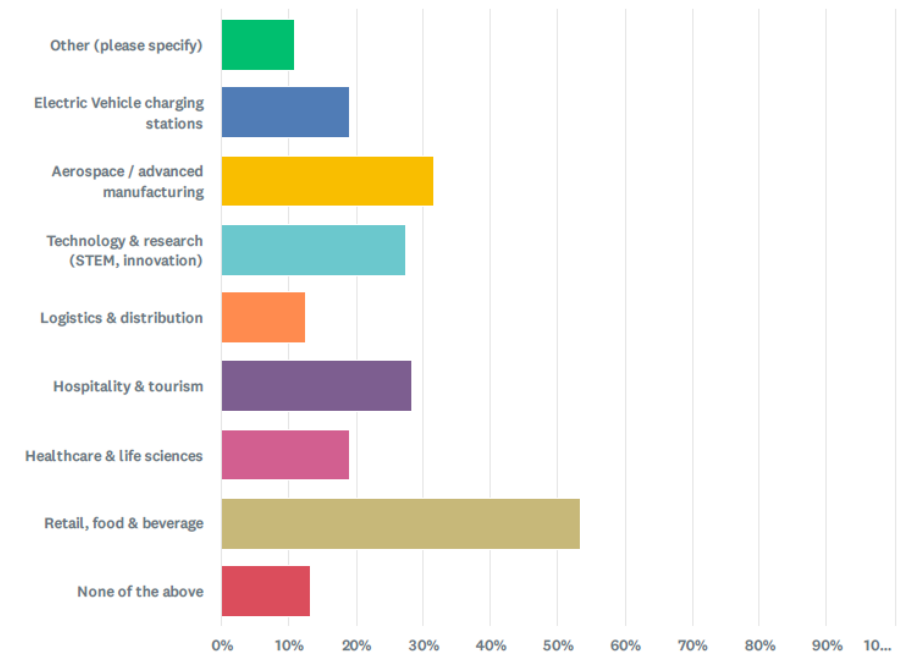
What We Heard

Survey

- Strong concern about cost, taxes, and return on investment
- Mixed perceptions of multimodal investments (especially bike infrastructure)
- Desire for improved transportation connections to jobs and key destinations

Q11 What types of businesses or amenities would you like to see near your workplace? (Select up to three.)

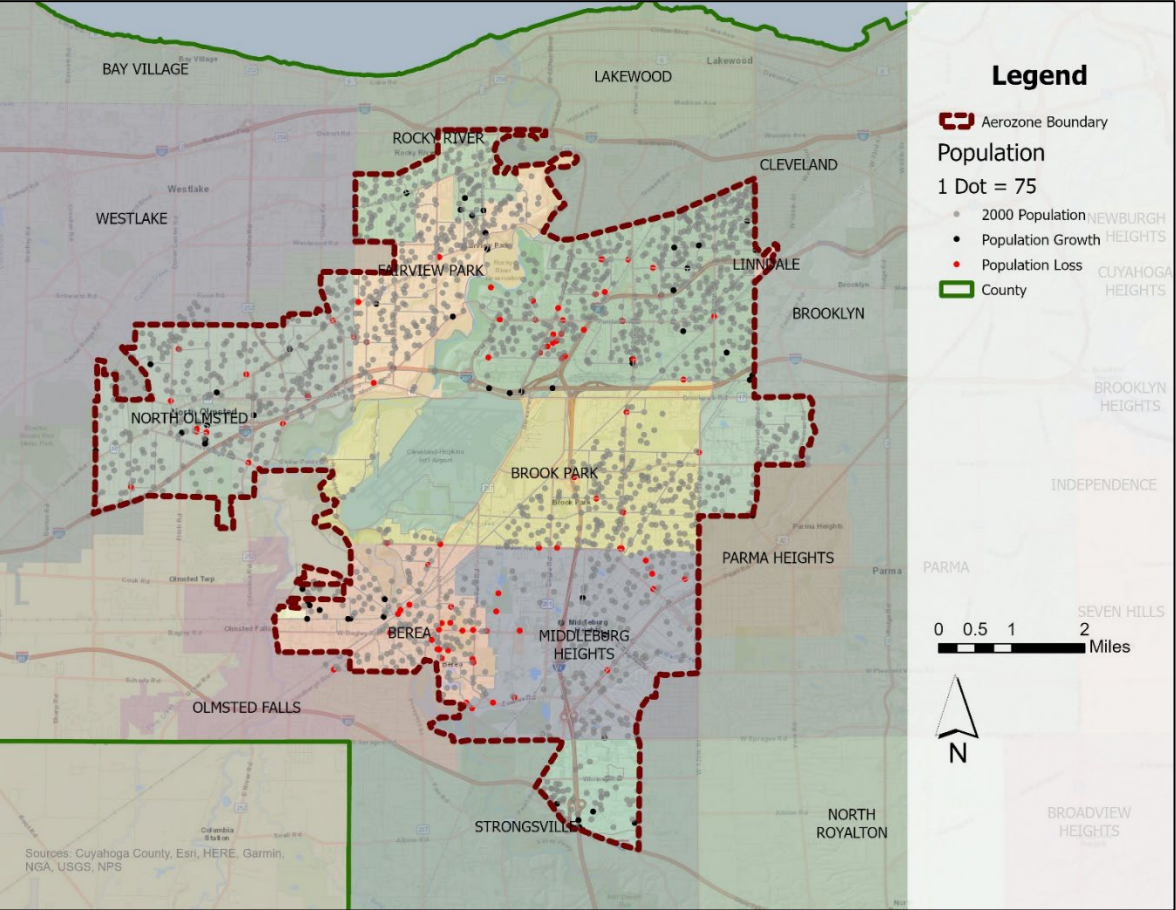
Answered: 120 Skipped: 119



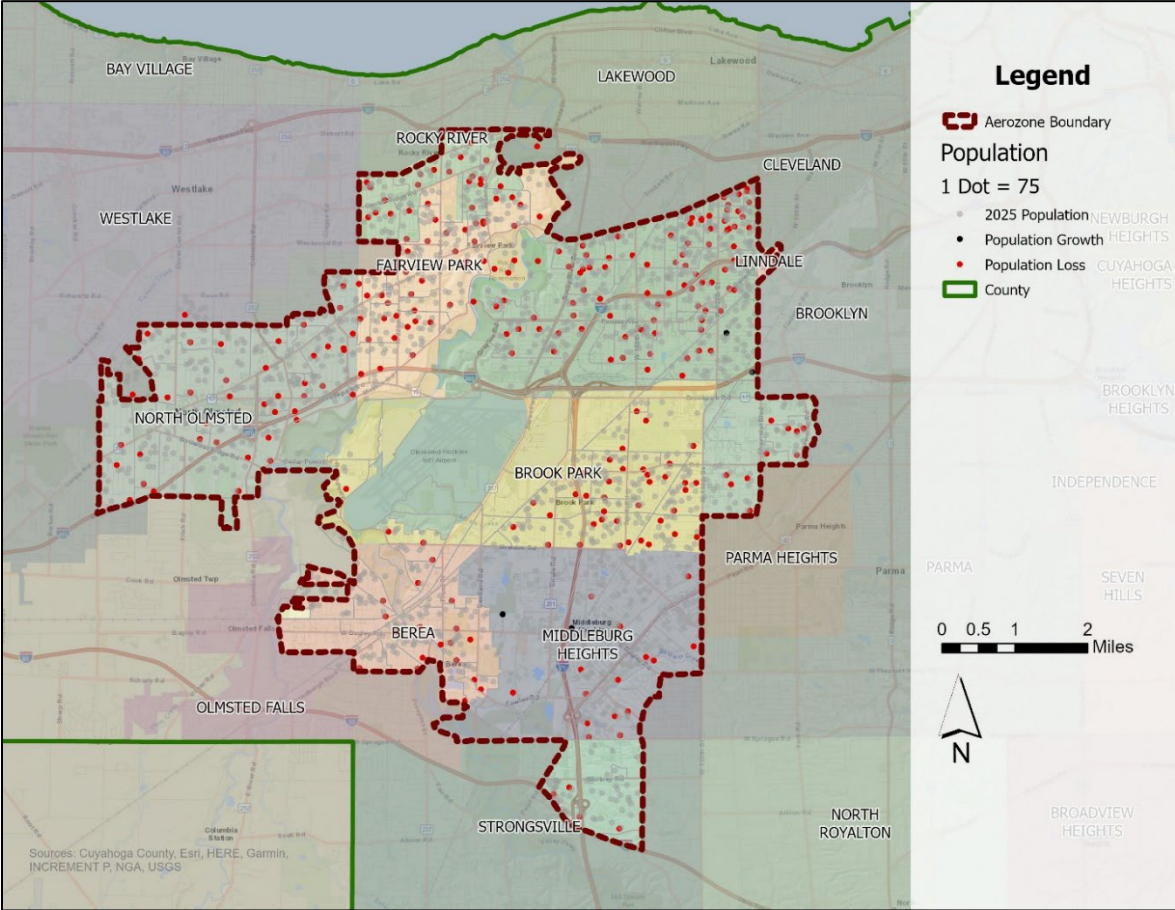
Existing Conditions

Existing Conditions

Historic population change



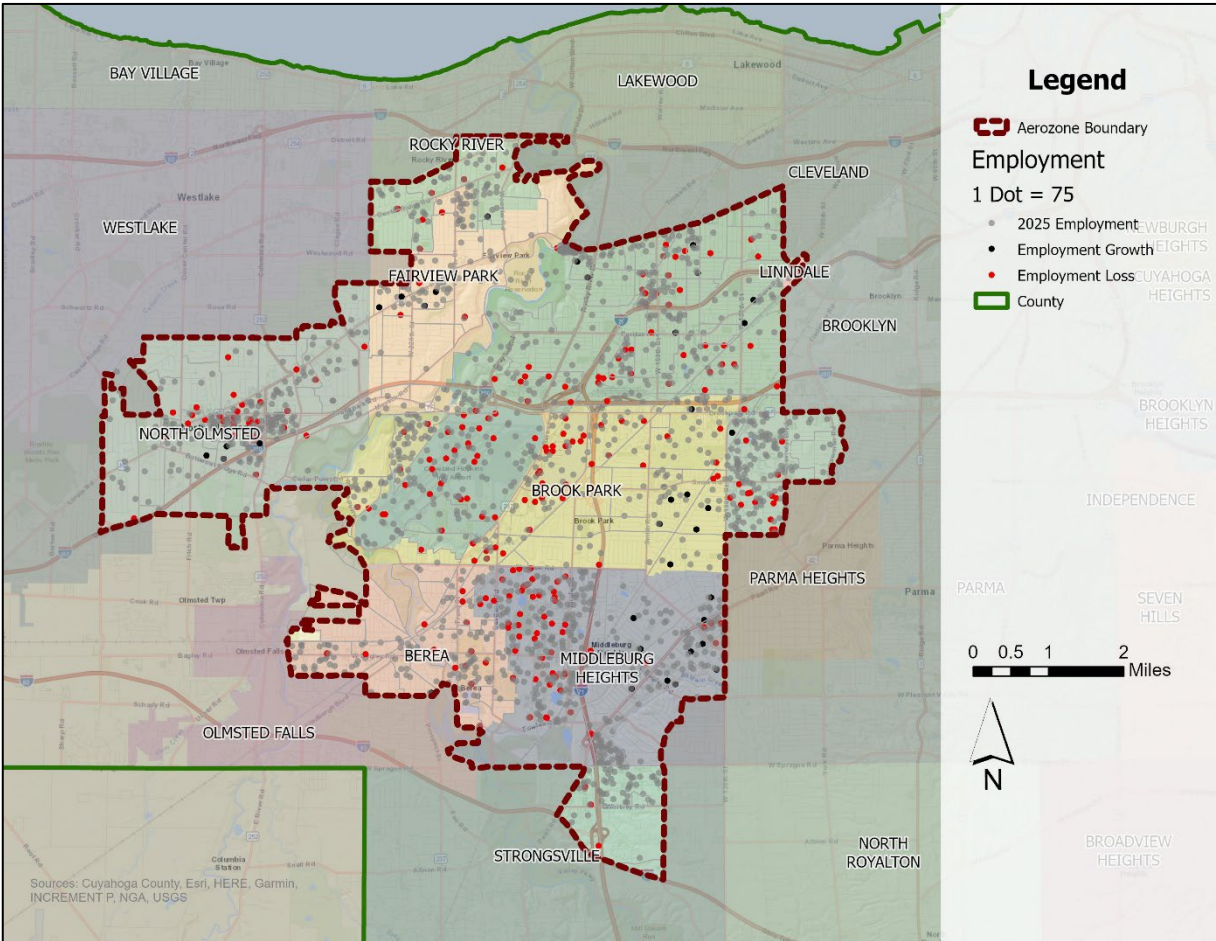
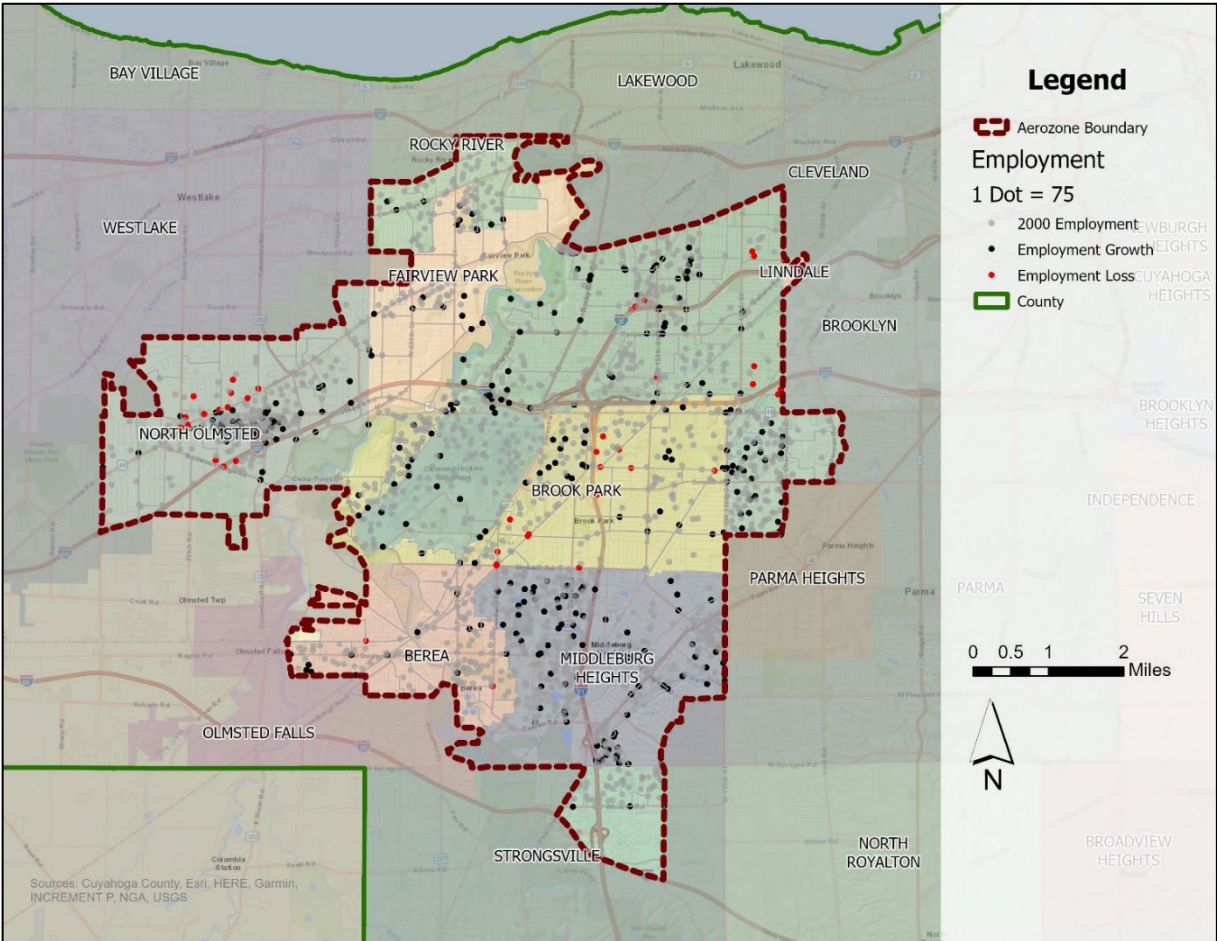
Projected population change



Existing Conditions

Historic employment change

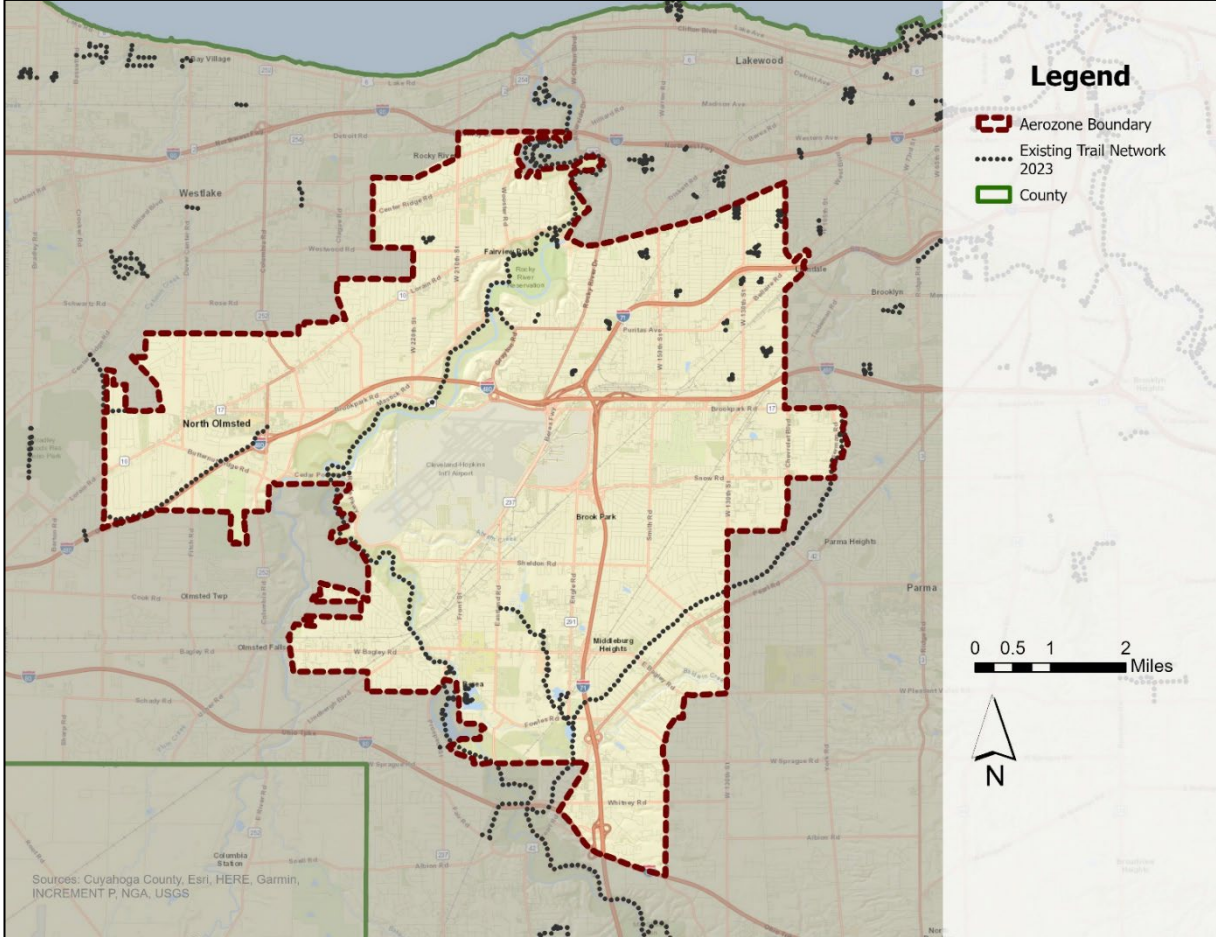
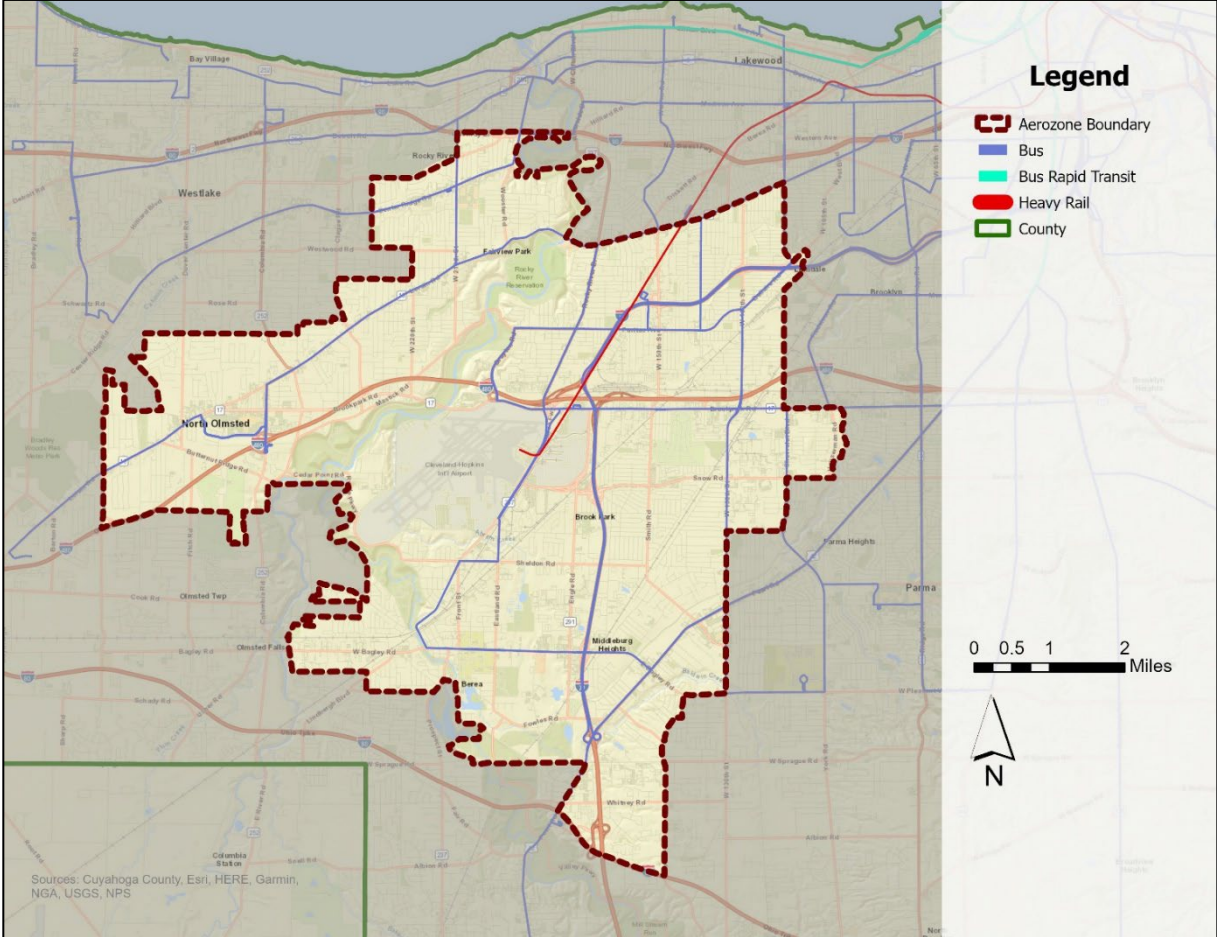
Projected employment change



Existing Conditions

Current transit systems

Current bicycle-pedestrian infrastructure



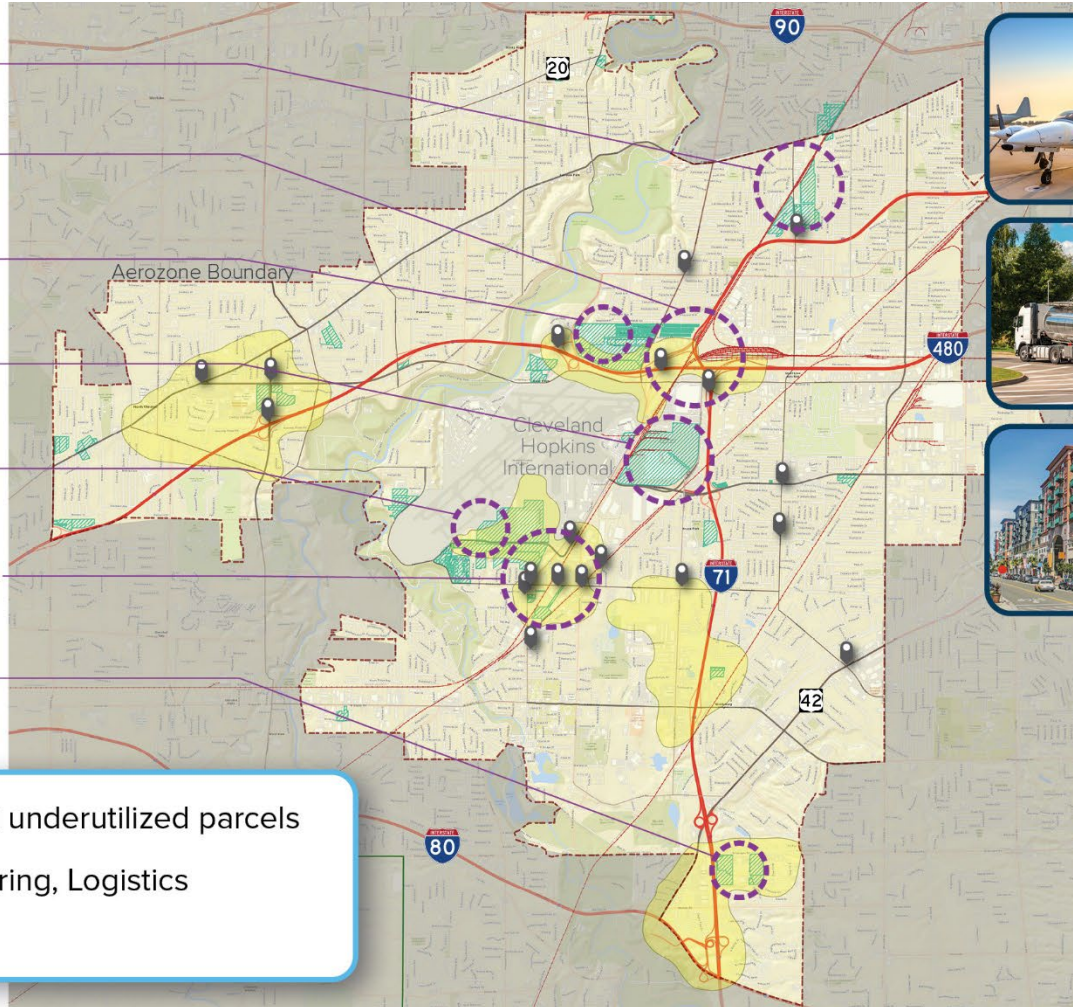
Existing Conditions

Year	Injury Severity					Grand Total
	Fatal	Serious	Visible	Possible	PDO/None	
2008	11	64	291	488	2,249	3,103
2009	11	69	271	492	2,421	3,264
2010	8	72	294	560	2,524	3,458
2011	8	64	320	608	2,557	3,557
2012	5	74	290	499	2,394	3,262
2013	6	80	270	535	2,293	3,184
2014	6	73	274	507	2,619	3,479
2015	7	74	300	549	2,696	3,626
2016	9	73	299	552	2,659	3,592
2017	8	58	266	564	2,619	3,515
2018	3	82	271	548	2,675	3,579
2019	6	66	411	531	2,664	3,678
2020	7	71	294	429	2,071	2,872
2021	7	75	321	531	2,371	3,305
2022	9	67	300	535	2,534	3,445
2023	5	67	280	470	2,409	3,231
Grand Total	116	1,129	4,752	8,398	39,755	54,150

Scenarios

Concept | Central Innovation Hub

- Air Cargo Support
- Interstate System Interchanges
- Advanced Manufacturing
- Stadium Site Redevelopment
- Maintenance
- IX Center | Railroad | Berea Freeway
- Aerospace | Office | R&D



Aerospace Expertise

- Manufacturing & Employment
- Airport focused



Transportation Investment

- Enhanced freight access
- Infill of sidewalk/trails gaps



Building Momentum

- Create new housing options
- Focused redevelopment energy

Legend

- Transportation Project Focus Area
- Potential Transportation Problem Locations
- Roadway Functional Classifications**
- Interstates
- Principal Arterials
- Minor Arterial
- Collector

Concept Goal: Develop key vacant and underutilized parcels

Growth Sectors: Aerospace, Manufacturing, Logistics

Transportation Costs: \$\$\$

Concept | Town Center Model

Fairview Park Town Center

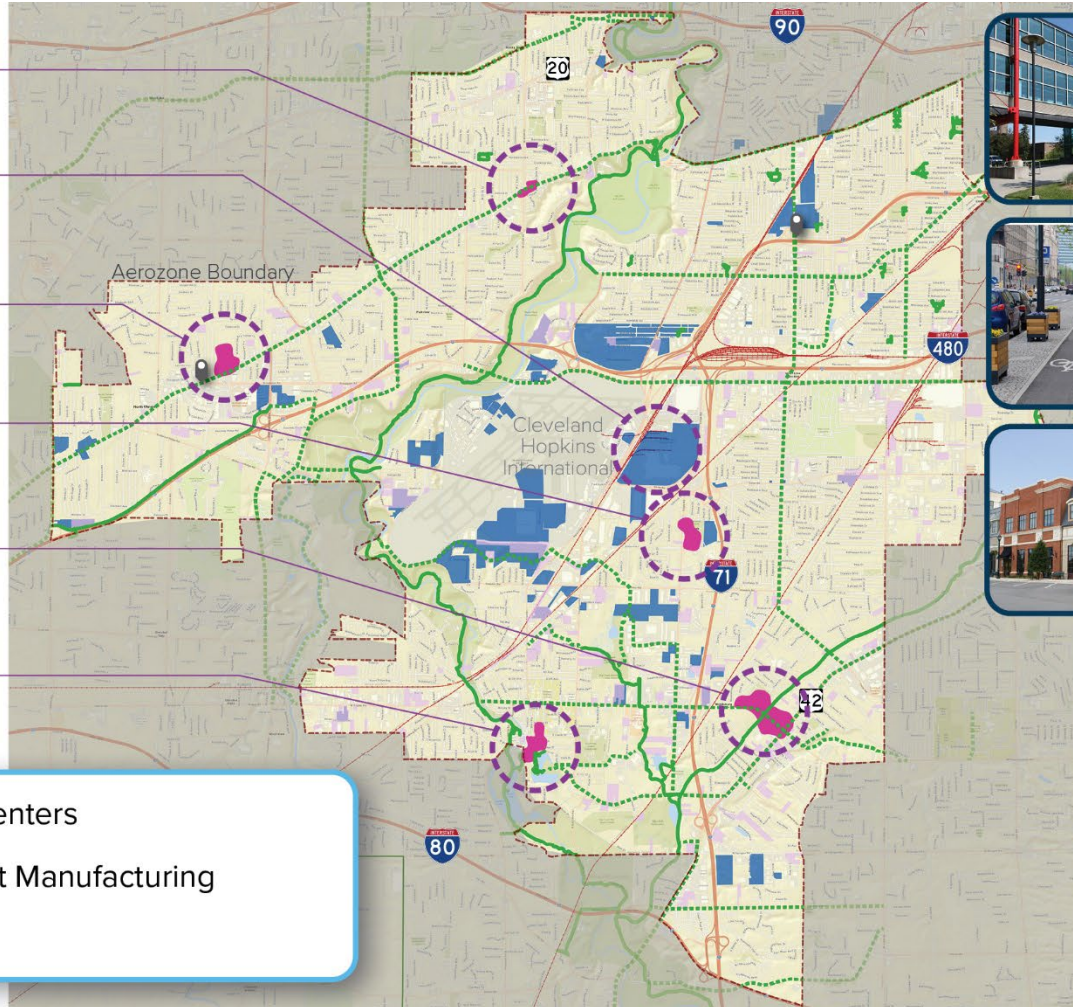
Stadium Town Center

North Olmsted Town Center

Brook Park Town Center

Middleburg Heights Town Center

Berea Town Center



Community Preference

- Tailored focus for each community
- New options throughout the district



Transportation Investment

- New trails and connections
- Improved streetscapes and crosswalks



Dispersed Nodes of Activity

- Multiple, mixed-use centers
- New housing, shopping, restaurants

Legend

- Existing Trails
- - - Planned Trails
- Town Center / Quality of Life District
- Tax Abatements
- Development Parcels

Concept Goal: Create vibrant activity centers

Growth Sectors: Retail, Hospitality, Light Manufacturing

Transportation Costs: \$\$\$

Concept | Corridor Investment

Cleveland Avenue TOD

Lorain Ave TOD

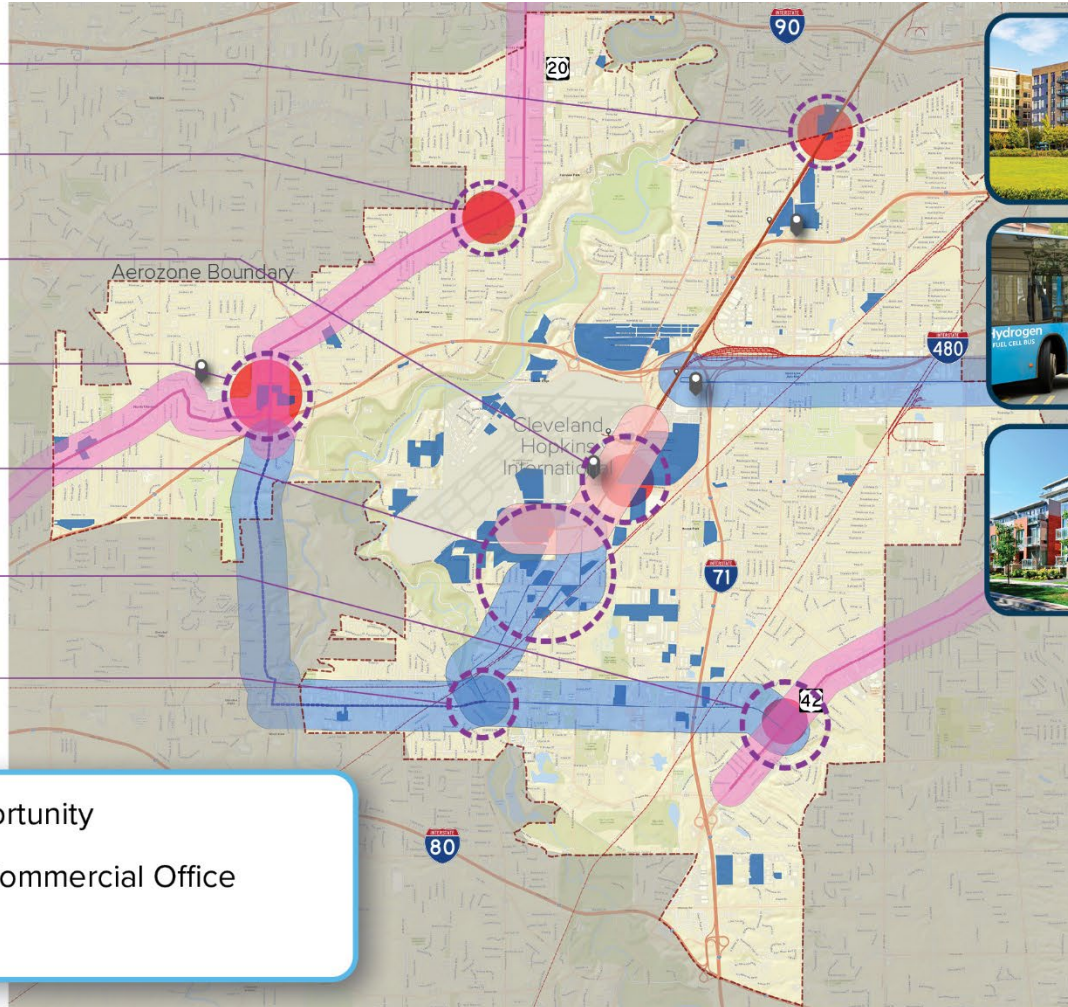
Airport | Stadium TOD

North Olmsted TOD

IX Center | Railroad | Berea Freeway

Middleburg Heights TOD

Berea TOD District



Transit Oriented Development (TOD)

- Focused clusters of development connected by public transit



Transportation Investment

- New modes, line extensions, increased frequencies, multiple modes



Opportunity Corridors

- Vibrant, well connected hubs
- Opportunity for housing and employment

Legend

- Bus Rapid Transit Extension
- Bus Line Extension
- Red Line Station Node
- Red Line Extension
- Red Line
- Development Parcels
- Potential TOD Districts

Concept Goal: Create corridors of opportunity

Growth Sectors: Light Manufacturing, Commercial Office

Transportation Costs: \$\$\$

FINANCIAL IMPACTS

The cost of the study is not to exceed \$414,748.

NEXT STEPS

American Structurepoint and NOACA staff will continue to provide updates to this Council as the project progresses.

Thank you!

Cindy Peck, PE, PTOE

cpeck@structurepoint.com

Philip Roth, PhD, AICP

proth@structurepoint.com

Will O’Gorman

wogorman@structurepoint.com

Angie Schmitt, 3MPH Planning and Consulting

angie@3mphplanning.com



NOACA

Northeast Ohio Areawide Coordinating Agency

NOACA will **strengthen** regional cohesion, **preserve** existing infrastructure, and **build** a sustainable multimodal transportation system to **support** economic development and **enhance** quality of life in Northeast Ohio.