

MEDINA COUNTY FIVE-YEAR FACILITY PLANNING AREA (FPA) BOUNDARY AND PRESCRIPTION UPDATE

Water Quality Subcommittee

March 20, 2026

ACTION REQUESTED

No action is required. This item is for information and discussion.

PREVIOUS ACTION

None.

FIVE-YEAR COUNTYWIDE FPA UPDATES

Review and update FPA boundaries & prescriptions

- Realign boundaries and prescriptions to parcels
- Update boundaries and prescriptions based on research and DMA feedback
- Reflect realistic infrastructure planning
- Prevent 208 Plan conflicts
- Reclassify “Local Prescription” areas

County	Fiscal Year	Status
Cuyahoga	2024	Complete
Geauga	2025	Complete
Medina	2026	In progress June 2026
Lake	2027	Upcoming September 2026
Lorain	2028	Upcoming

DEFAULT PRESCRIPTIONS

- **Currently Sewered** – Area has existing sanitary sewers and adequate POTW treatment capacity; unsewered properties may connect when feasible.
- **Communal Systems** – Multiple properties served by a small shared treatment system; must connect to a POTW if sewers become available.
- **Sewers Expected Within 20 Years** – Sewer extension anticipated due to development demand or infrastructure needs.
- **Limited Sewers Expected Within 20 Years** – Sewer extension possible if demand develops, but less likely due to limited development pressure or adequate on-site systems.
- **Areas Served by On-Site Systems** – Wastewater managed by individual on-site systems; sewer extensions not planned.

Map Label(s) ¹	Map Color
Currently Sewered	Yellow
Currently Sewered by a Communal System	Grey
Sewers Expected Within 20 Years	Orange
Limited Sewers Expected Within 20 Years or May Be Sewered	Light Blue
Areas Served by On-Site Systems or No Sewer Service	Light Green
Local Prescriptions	Red

LOCAL PRESCRIPTIONS

- **Local Prescriptions** – “Local Prescriptions are from communities that want to vary from the default Prescriptions explained in the previous section. The following community-specific wastewater planning options modify or replace the default Prescription, as appropriate” (Clean Water 2020, A-69).

Medina County

Medina County Sanitary Engineer (MCSE): The MCSE will extend sewers in identified areas only in consultation with affected townships, cities, or villages.

Sharon Township: Sharon Township requests no expansion of sanitary sewer service within the township.

A-70

Map Label(s) ¹	Map Color
Currently Sewered	Yellow
Currently Sewered by a Communal System	Grey
Sewers Expected Within 20 Years	Orange
Limited Sewers Expected Within 20 Years or May Be Sewered	Light Blue
Areas Served by On-Site Systems or No Sewer Service	Light Green
Local Prescriptions	Red

MEDINA COUNTY FPA UPDATE PROCESS

WQP Staff
develop initial
maps for
discussion

DMA
Roundtable
Meeting with
all Primary
DMAs

Meet with
DMAs by
request

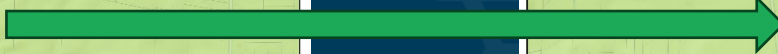
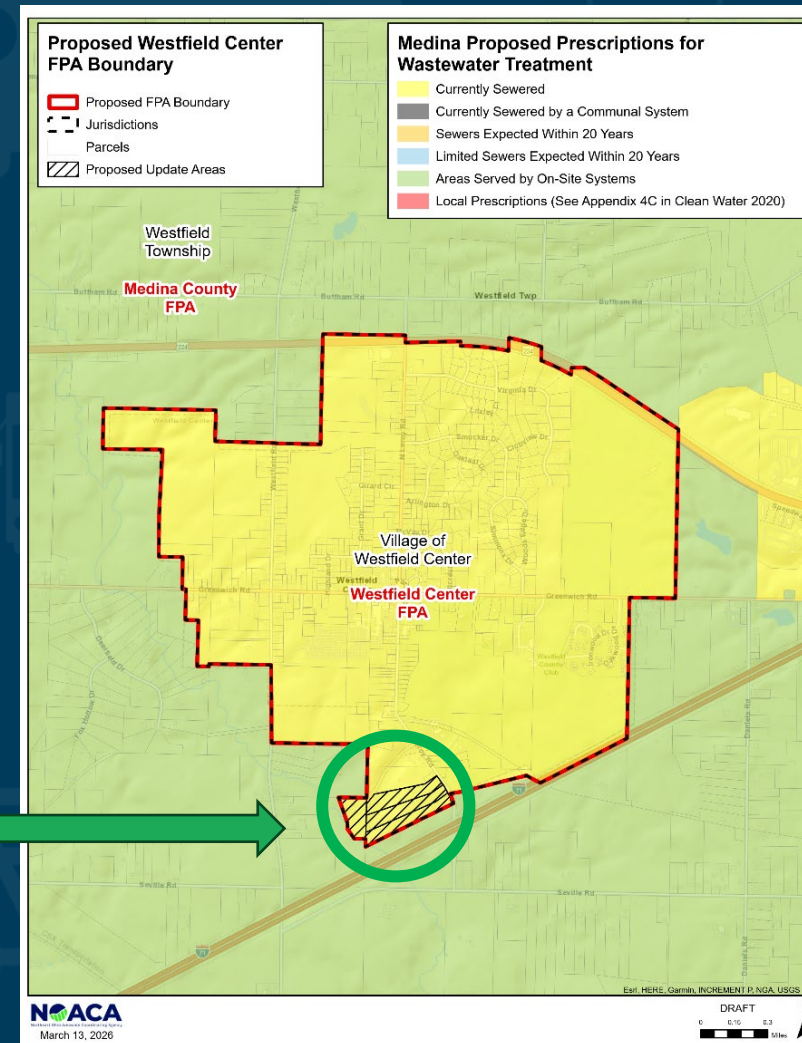
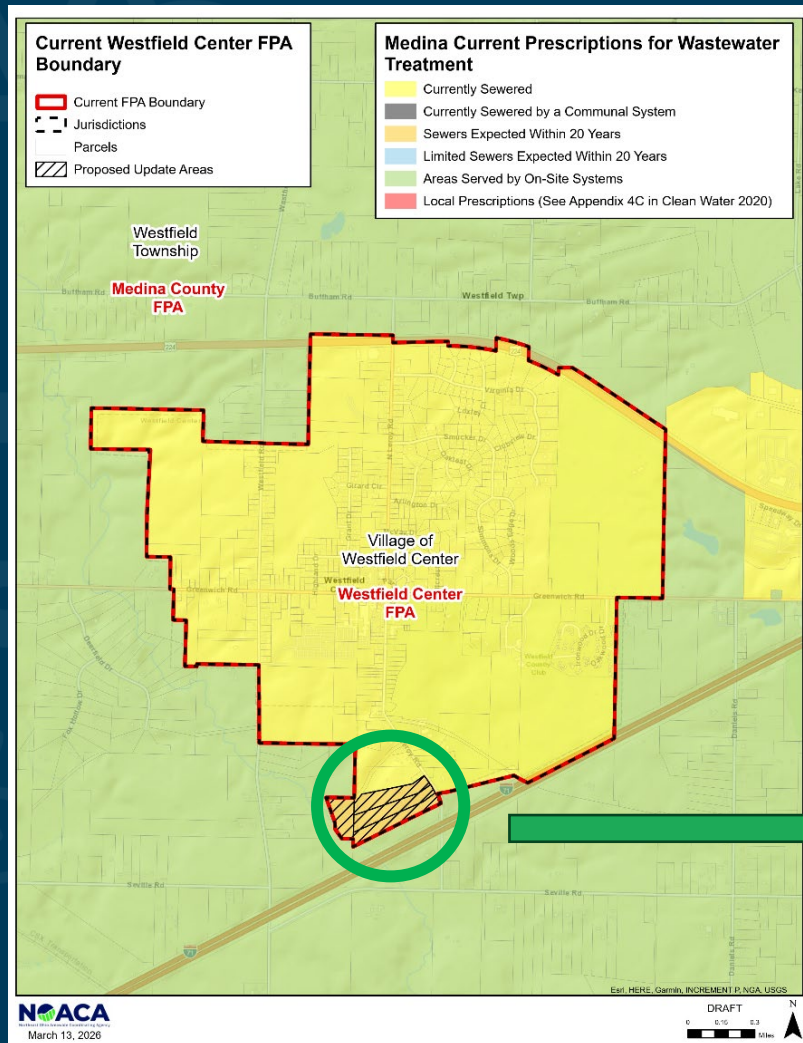
WQP staff
prepare & send
FPA draft maps
to DMAs &
affected
jurisdictions

DMAs &
affected
jurisdictions
provide
feedback

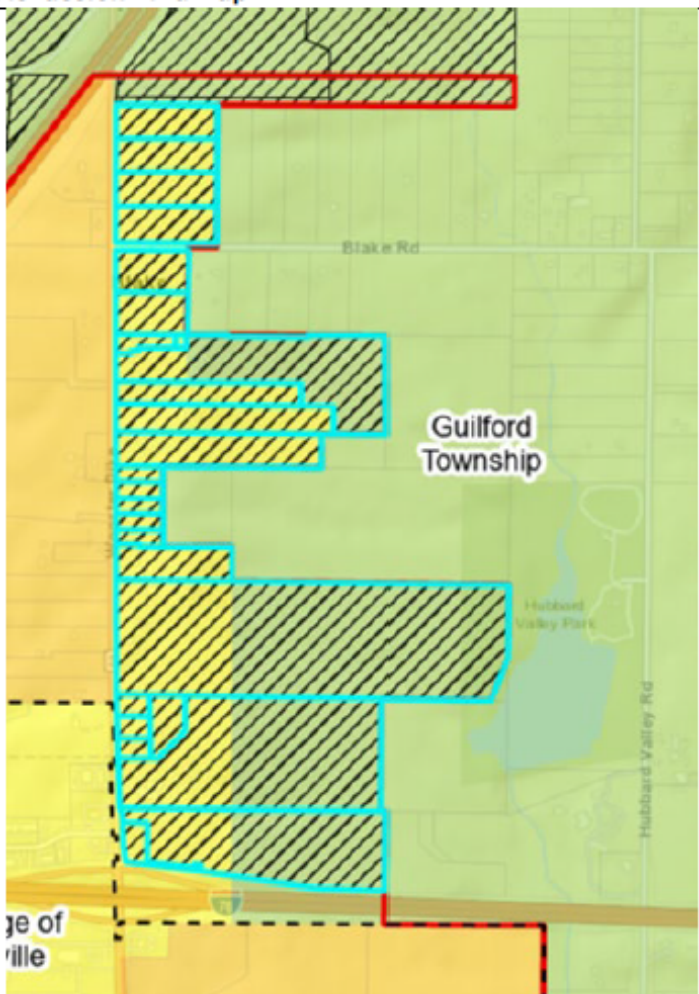
DMAs return
signed map
approval form

WQP Staff
combine &
prepare
updates for
NOACA Board
approval

FPA MAP REVIEWS



FPA MAP REVIEWS

PPN	Discussion Area Map	NOACA Comments
00816A12020		<p>If sewers or demand for sewers may exist or is expected within 20 years, then NOACA staff suggests updating prescriptions to "Sewers Expected Within 20 Years" (orange color).</p> <p>If there are no plans to extend sewers from the Village nor the Township within 20 Years, then the prescriptions should be changed to "Areas Served by On-Site Systems" (green color).</p> <p>Another option is "Limited Sewers Expected Within 20 Years" if demand may develop in this area within the next 20 years, but it is not necessarily expected then this prescription would apply (blue color).</p>
00816A12021		
00816A12022		
00816A17003		
00816A17004		
00816A17005		
00816A17006		
00816A17007		
00816A17011		
00816A17012		
00816A17013		
00816A22011		
00816A22013		
00816A22014		
00816A22015		
00816A22016		
00816A22017		
00816A22020		
00816A27006		
00816A27007		
00816A27008		
00816A27009		
00816A27010		
00816A27011		
00816A27012		

FPA MAP REVIEWS

The screenshot displays the ArcGIS Desktop interface for a map review session. At the top, a meeting toolbar includes icons for 'Take control', 'Chat', 'People' (showing 2 participants), 'Raise', 'React', 'View', 'More', 'Camera', 'Mic', 'Share', and a red 'Leave' button. The main window title is 'Medina County Five-Year Update - Medina County FPA Revised'. The software interface includes a ribbon with tabs for 'Project', 'Map', 'Insert', 'Analysis', 'View', 'Edit', 'Imagery', 'Share', 'Help', 'Graphics', and 'Linear Referencing'. The 'Map' ribbon is active, showing various tool groups like 'Clipboard', 'Navigate', 'Layer', 'Selection', 'Inquiry', 'Labeling', and 'Offline'. On the left, the 'Contents' pane shows a 'Drawing Order' list with layers such as 'Map', 'Labels', 'Streets Layer', 'Jurisdictions', 'FPA Boundaries', 'NEFCO_200_Plan_Area', 'Parcels', 'Sewers', 'Prescriptions', 'Attachments', and 'World Street Map'. The central map area shows a geographic view of Medina County, Ohio, with several FPA boundaries highlighted in red and yellow. Labeled areas include 'Medina County FPA', 'Guilford Township', 'City of Rittman', 'Rittman FPA', 'City of Rittman', 'Wadsworth Township', 'Wadsworth FPA', and 'City of Wadsworth'. A 'Catalog' pane on the right shows a project structure with folders for 'Maps', 'Toolboxes', 'Databases', 'Layouts', 'Styles', 'Folders', and 'Locators'. A user profile for 'Sarah Stanzi' is visible in the bottom right corner of the interface.

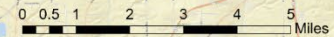
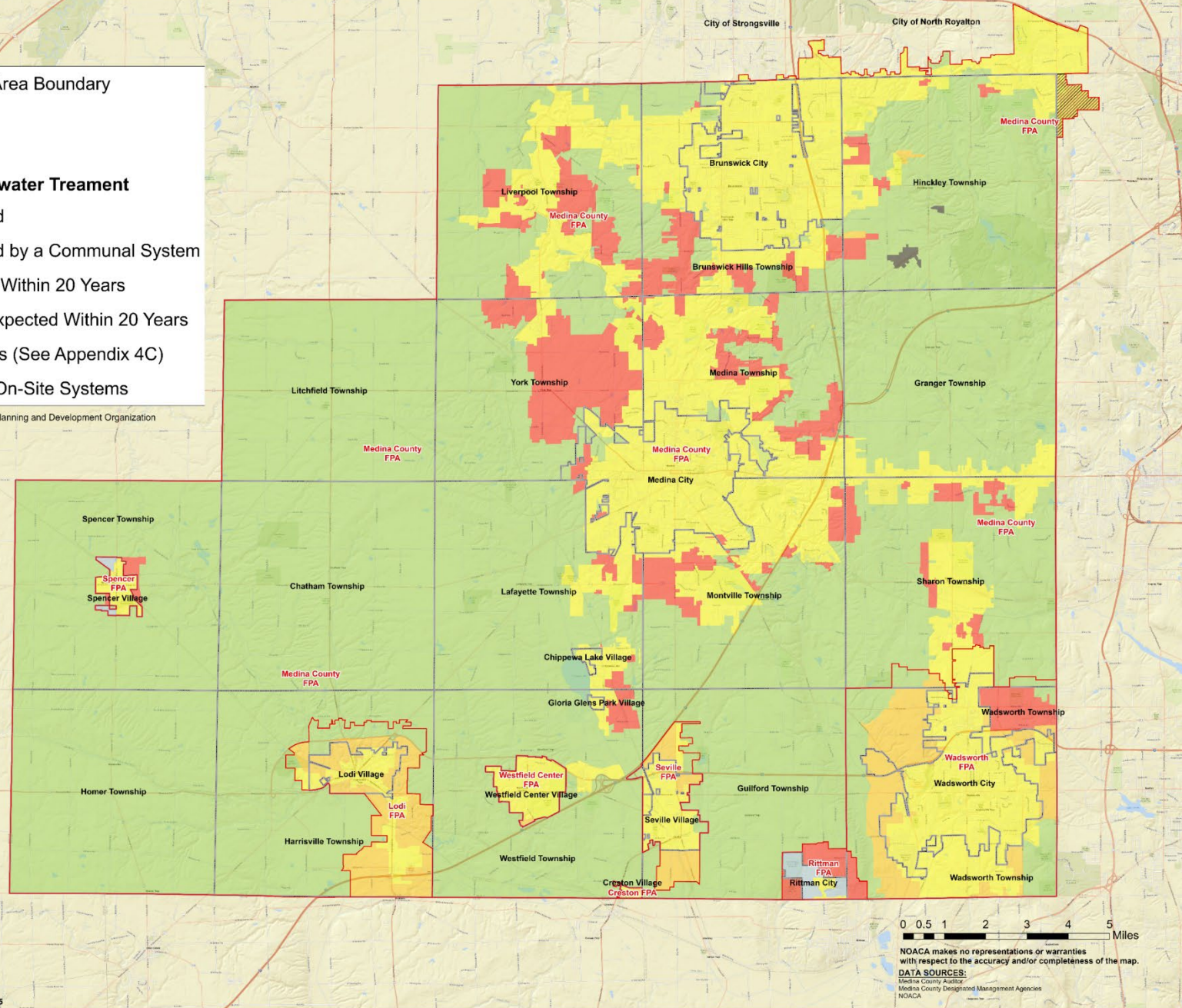


Facility Planning Area Boundary
Jurisdictions
NEFCO 208 Plan

Prescriptions for Wastewater Treatment

- Currently Sewered
- Currently Sewered by a Communal System
- Sewers Expected Within 20 Years
- Limited Sewers Expected Within 20 Years
- Local Prescriptions (See Appendix 4C)
- Areas Served by On-Site Systems

NEFCO = Northeast Ohio Four County Regional Planning and Development Organization



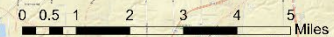
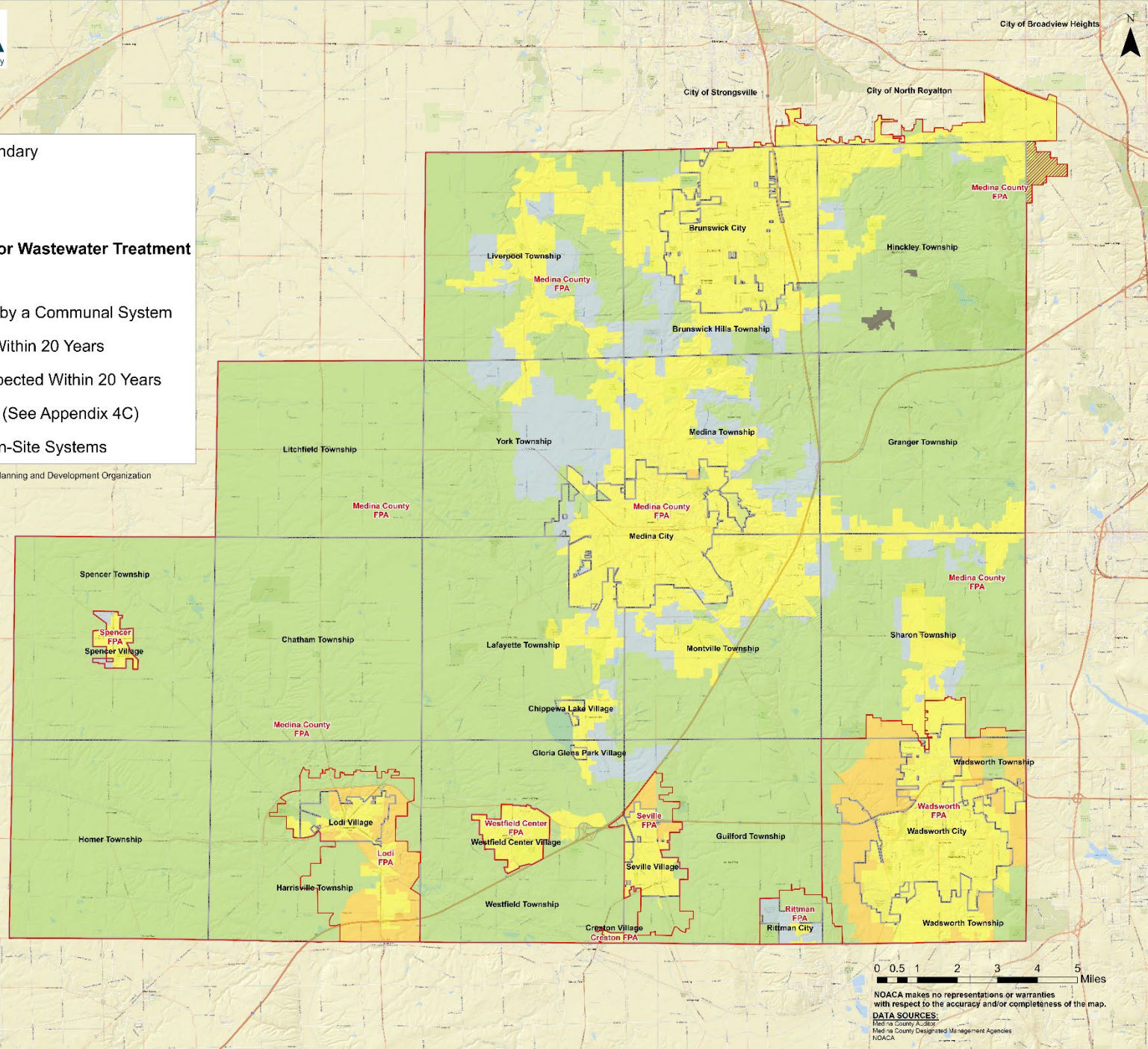
NOACA makes no representations or warranties with respect to the accuracy and/or completeness of the map.
DATA SOURCES:
 Medina County Auditor
 Medina County Designated Management Agencies
 NOACA



Proposed Prescriptions for Wastewater Treatment

- Proposed FPA Boundary
- Jurisdictions
- NEFCO 208 Plan
- Currently Sewered
- Currently Sewered by a Communal System
- Sewers Expected Within 20 Years
- Limited Sewers Expected Within 20 Years
- Local Prescriptions (See Appendix 4C)
- Areas Served by On-Site Systems

NEFCO = Northeast Ohio Four County Regional Planning and Development Organization



NOACA makes no representations or warranties with respect to the accuracy and/or completeness of the map.
DATA SOURCES:
 Medina County Auditor
 Medina County Designated Management Agencies
 NOACA

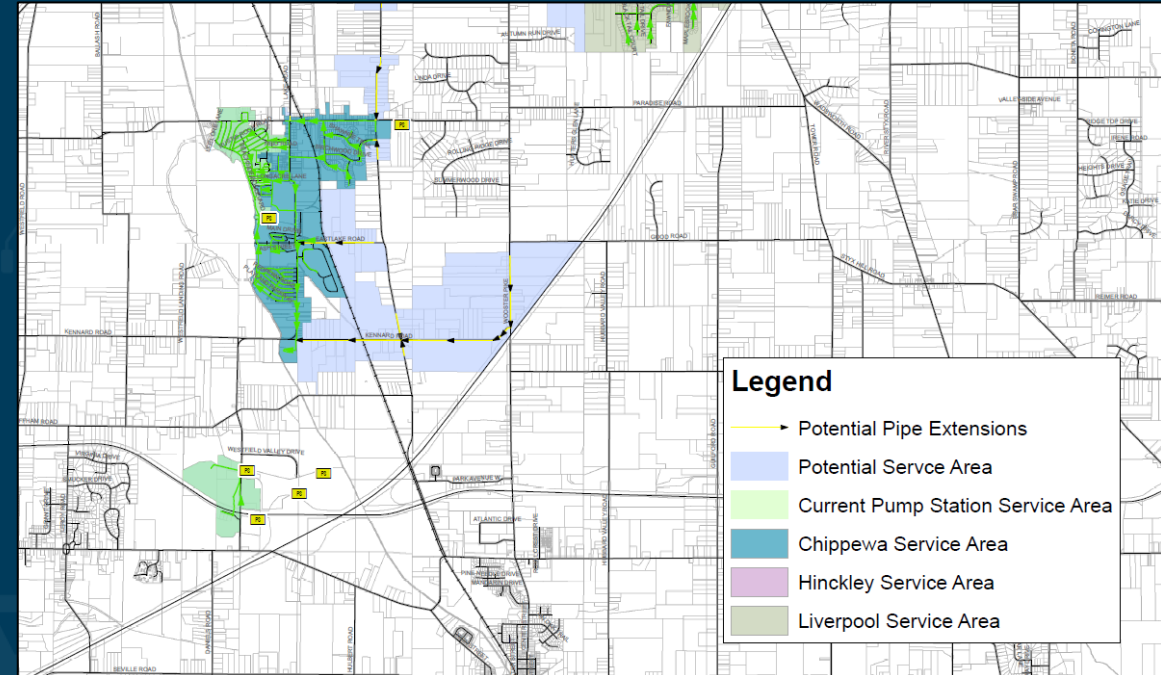
MEDINA COUNTY FPA UPDATE STATUS

- **Completed – 21**
 - Approved / Sign-Off Received: 15
 - No Updates Proposed: 6
- **In Progress – 7**
 - Communicating / negotiating updates with jurisdictions: 6
 - Awaiting Final Approval: 1
- **Awaiting Response – 3**
 - Outreach ongoing

Status	Count	Notes & Next Steps
Approved, Sign-Off Received	15	All have reviewed and signed off on proposed updates.
No Updates Proposed	6	No updates recommended at this time.
In Communication/ Negotiating Updates	6	Responses have been submitted to NOACA; edits, meetings, and discussions in progress
Awaiting Final Approval	1	Approval anticipated.
No Response Yet	3	Awaiting responses to outreach.

ONGOING CONVERSATIONS

- Process to track updates for five-year updates in the interim period
 - Email
 - Form
 - Map
- Exploring mapping Secondary DMAs
- Potential service area mapping as another best management practice for DMAs



NEXT STEPS

1. Finalize proposed FPA boundaries and prescriptions update maps for outstanding jurisdictions/FPAs
2. Email maps to DMAs and Affected Jurisdictions for review
3. Request sign off and agreement on Acknowledgement of Map Accuracy Forms for remaining FPAs
4. Present update to NOACA's Water Quality Subcommittee (June 2026) for recommendation for Board approval (September 2026)

NEXT STEPS

NOACA
Board
approval

Transmit
copies to
appropriate
agencies

Submit to
Ohio EPA for
certification
by the
Governor



NOACA

Northeast Ohio Areawide Coordinating Agency

NOACA will **strengthen** regional cohesion, **preserve** existing infrastructure, and **build** a sustainable multimodal transportation system to **support** economic development and **enhance** quality of life in Northeast Ohio.