

WATER QUALITY PROGRAM UPDATE

Water Quality Subcommittee
September 19, 2025

ACTION REQUESTED

No action is requested. This item is for information and discussion.

PREVIOUS ACTION

Staff make presentations on the Water Quality Planning Program at each quarterly meeting of the Water Quality Subcommittee.

REGIONAL COORDINATION WORK

Regional Riparian Setback Legislation Review 2024

- NOACA Water Quality Planning (WQP) staff will present at the Ohio Transportation Engineering Conference (OTEC)
- Tuesday, October 14, 2025,
3:30 – 5:00 PM



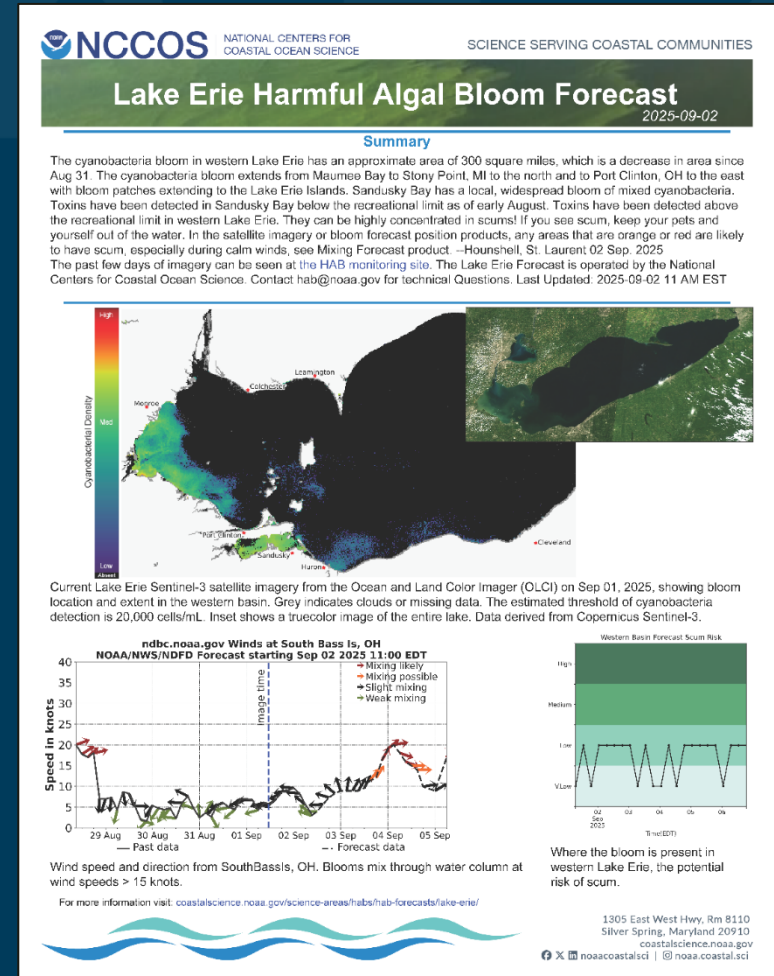
Ohio Transportation Engineering Conference

Please join us in Columbus for OTEC 2025:
October 14 & 15

REGIONAL COORDINATION WORK

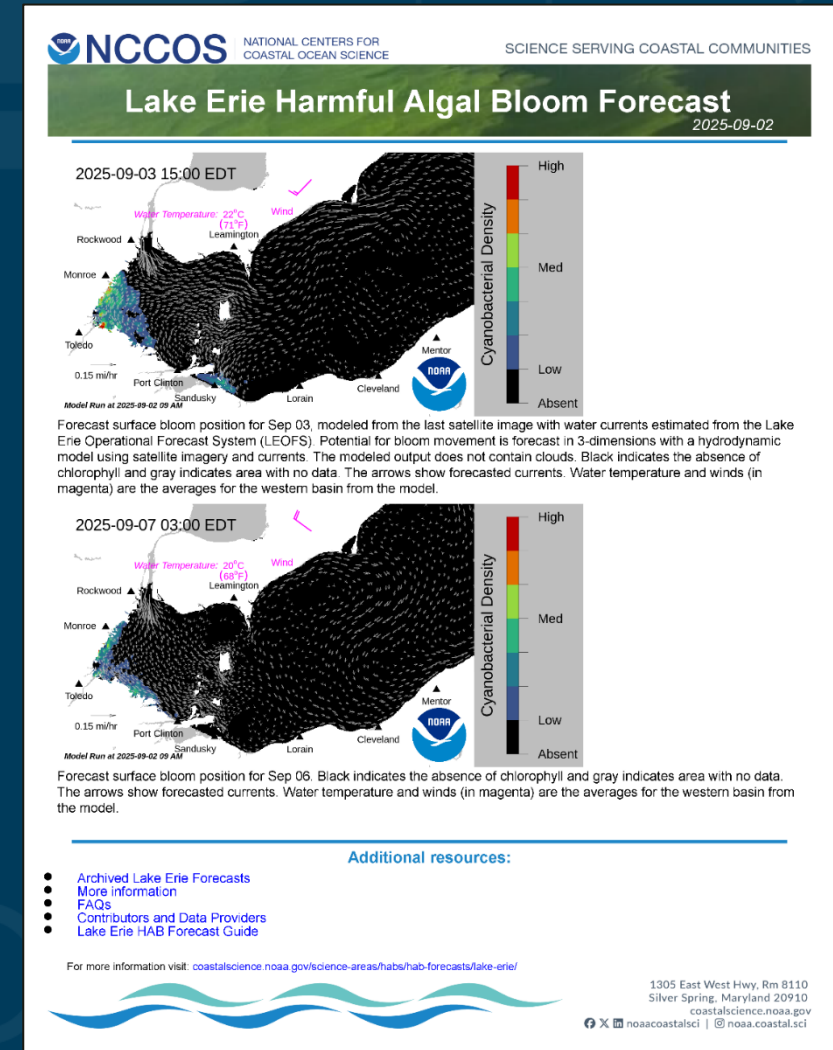
Western Lake Erie Harmful Algal Bloom (HAB) Early Season Projection

- A seasonal projection update for the Western Lake Erie HAB was issued on July 31, 2025
- A mild to moderate bloom severity of 3 with a range of 2.5-4 (out of 10) is expected
- The HAB forecast for September 2, 2025, reported that the cyanobacteria bloom in western Lake Erie is approximately 300 sq. mi.



REGIONAL COORDINATION WORK

- The bloom extends north from Maumee Bay along the Michigan coast to Stony Point and east along the Ohio coast to Port Clinton, with patches extending to the Lake Erie Islands
- Toxins have been detected above the recreational limit in western Lake Erie
- Toxins have been detected below the recreational limit in Sandusky Bay



OVERALL WORK PROGRAM (OWP)

Support Water Quality Subcommittee (WQS) & provide quarterly updates

- Continue to participate in Black & Cuyahoga River Areas of Concern (AOCs): Advisory Committees

Black River AOC Advisory Committee

- Black River AOC Advisory Committee meeting (July 8, 2025)
 - Updated TMDL reports are forthcoming
 - **USEPA approved removal the “Degradation of Fish Populations” and “Loss of Fish Habitat” BUIs (September 18, 2025)**
 - Benthos sampling for the final BUI removal this year
 - One BUI remains:
 - Degradation of Benthos



OVERALL WORK PROGRAM (OWP)

Cuyahoga River AOC Advisory Committee

- Cuyahoga River AOC Advisory Committee meeting (July 15, 2025)
- Benthos sampling began in August 2025 at two locations: RM 5.9 of the Cuyahoga River and Euclid Creek
- Four BUIs remain:
 1. Degradation of Fish and Wildlife Populations
 2. Degradation of Benthos
 3. Restrictions on Navigational Dredging
 4. Loss of Fish Habitat



CLEAN WATER 2020 WORK

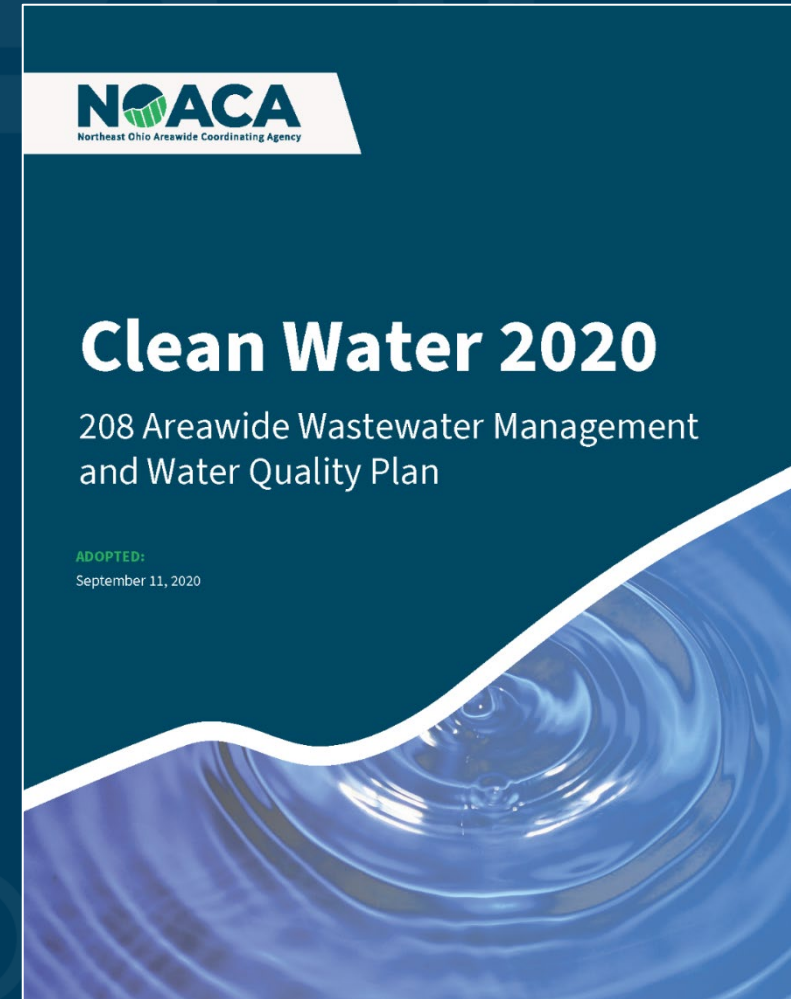
NOACA WQP staff hosted a DMA Roundtable webinar on June 25, 2025

- Agenda items included:
 - Ohio EPA update;
 - Presentation of NOACA's FPA population forecasts; and
 - Overview and lessons learned during the Geauga County Five-Year FPA Boundary and Prescription Update process
- The webinar was recorded & attended by 21 representatives

CLEAN WATER 2020 WORK

***Clean Water 2020* reformatting:**

- Staff reformatted the plan and appendices from landscape to portrait (NOACA's new report format)
- Staff updated the 208 Areawide Water Quality Management Plan webpage to summarize the reformatting work



CLEAN WATER 2020 WORK

Updated FPA Population Forecasts

- WQP staff distributed the forecasts and edits to Appendix 4E-1 of *Clean Water 2020* to primary and secondary DMAs for review and comment

Table 4E-1: Facility Planning Area (FPA) Population Forecasts

FPA	TOTAL FORECAST										POPULATION CHANGE									
	CENSUS		FORECAST								NUMBER (#)					PERCENTAGE (%)				
	2010	2020	2025	2030	2035	2040	2045	2050	2010-2020	2020-2030	2030-2040	2040-2050	2010-2020	2020-2030	2030-2040	2040-2050				
Amesland	12,922	13,167	12,881	12,572	12,250	11,921	11,591	11,261	245	-245	-1	-1	-1.23%	0.5%	-3.3%	-5.2%	-7.1%	-9.0%		
Aurora	22	17	17	16	16	16	16	16	-5	-5	-1	-1	-22.5%	-6.1%	-6.1%	-6.1%	-6.1%	-6.1%		
Avon Lake	19,744	28,742	29,812	30,670	31,422	32,047	32,620	32,977	8,998	1,928	1,379	10	3,316	45.0%	6.7%	4.5%	0.0%	11.5%		
Avon Lake/LORCO Phase	4,044	5,947	6,001	6,063	6,115	6,168	6,168	6,168	1,903	116	97	4	219	47.1%	2.0%	1.9%	0.0%	3.7%		
Bedford	12,495	12,971	12,881	12,808	12,610	12,333	11,804	11,308	476	-163	-475	-1,025	-1,662	3.8%	-1.3%	-3.7%	-3.3%	-12.8%		
Bedford Heights	14,014	14,777	14,673	14,545	14,279	13,916	13,514	12,762	763	-232	-650	-1,153	-2,015	5.4%	-1.6%	-4.3%	-3.3%	-13.0%		
Barton	1,400	1,384	1,269	1,244	1,229	1,211	1,204	1,194	-80	-21	34	-43	-6.9%	-4.6%	-1.9%	2.8%	-3.7%			
Chagrin Falls	4,443	5,032	5,043	5,027	4,977	4,894	4,723	4,557	589	-5	-134	-337	-475	13.3%	-0.1%	-2.7%	-6.9%	-9.4%		
Chardon	5,089	4,941	4,830	4,703	4,591	4,506	4,415	4,311	-245	63	172	135	370	-4.8%	1.3%	2.9%	2.7%	7.6%		
Creston	36	25	25	24	24	24	24	24	-11	-11	-1	-1	-30.2%	-3.1%	-4.5%	-2.8%	-10.1%			
Elyria	65,411	61,565	60,839	60,069	59,178	58,383	58,313	58,384	-3,848	-1,458	-1,708	21	-3,181	-5.8%	-2.4%	-2.8%	0.0%	-5.2%		
Euclid	91,994	87,234	84,434	81,449	78,038	74,204	71,358	68,285	-4,659	-5,785	-7,244	-8,640	-10,878	-5.0%	-6.6%	-8.9%	-7.8%	-21.4%		
French Creek	35,279	40,385	40,385	40,385	40,385	40,385	40,385	40,385	5,106	5,106	5,106	5,106	14.5%	14.5%	14.5%	14.5%	14.5%			
Geauga County	82,202	85,383	85,412	86,207	87,004	87,504	88,010	88,516	3,314	845	3,297	2,406	6,547	3.8%	1.0%	3.8%	2.7%	7.7%		
Grafton	1,262	1,225	1,275	1,216	1,251	1,279	1,294	1,294	-37	63	81	9	151	-69.2%	4.0%	2.9%	0.1%	6.9%		
LaGrange	2,859	3,099	3,138	3,175	3,197	3,207	3,204	3,210	359	70	33	112	8.4%	2.5%	1.0%	0.1%	3.6%			
Lake County	122,710	127,648	127,246	126,167	124,683	122,959	119,003	115,148	4,938	-1,481	-3,308	-7,711	-12,500	4.0%	-1.2%	-2.0%	-6.3%	-8.9%		
Lakewood	56,465	50,808	49,334	47,822	45,921	43,722	41,844	40,077	-6,657	-2,981	-4,106	-3,845	-10,726	-10.0%	-5.9%	-8.6%	-8.3%	-21.1%		
Lodi	3,644	3,157	3,104	3,060	2,994	2,949	2,910	2,872	-487	-97	-111	-77	-285	-13.4%	-3.1%	-3.6%	-2.6%	-9.0%		
Lorain	92,724	86,038	83,974	81,867	80,056	78,259	78,221	78,314	-6,686	-4,072	-3,697	45	-7,724	-7.2%	-4.7%	-4.5%	0.1%	-8.0%		
Lorain County	1,818	1,477	1,504	1,499	1,490	1,484	1,478	1,473	-341	191	195	5	395	-4.4%	2.6%	1.4%	0.1%	4.1%		
Lorain County & LORCO	14,818	15,381	15,381	15,381	15,381	15,381	15,381	15,381	5,563	1,190	819	9	6,774	3.8%	3.7%	4.9%	0.1%	13.1%		
Medina County	125,355	153,941	156,392	158,278	158,924	158,924	158,924	158,924	33,569	28,627	28,627	28,627	23,000	23.6%	23.6%	23.6%	23.6%	23.6%		
Medfield	2,262	2,415	2,435	2,465	2,494	2,524	2,554	2,584	2,604	143	143	143	143	6.3%	6.3%	6.3%	6.3%	6.3%		
NEORSD - Big Creek	84,069	80,191	77,990	75,715	72,999	69,825	66,618	63,225	-3,878	-4,178	-4,478	-4,778	-5,078	-4.7%	-5.0%	-5.3%	-5.6%	-5.9%		
NEORSD - CVI	53,498	51,595	52,295	52,994	53,694	54,394	55,094	55,794	-903	1,294	1,594	1,894	2,194	-1.7%	-1.4%	-1.1%	-0.8%	-0.5%		
NEORSD - Eastern	205,179	145,920	142,504	135,458	127,261	118,905	110,650	102,395	-159,259	109,171	109,171	109,171	109,171	-77.4%	-77.4%	-77.4%	-77.4%	-77.4%		
NEORSD - Heights Hilltop	178,005	172,852	169,110	165,010	159,476	152,748	148,117	138,962	-5,163	-5,163	-5,163	-5,163	-5,163	-2.9%	-2.9%	-2.9%	-2.9%	-2.9%		
NEORSD - Mill Creek	100,079	91,798	88,111	84,455	80,212	75,592	72,231	68,292	-17,281	-17,281	-17,281	-17,281	-17,281	-17.2%	-17.2%	-17.2%	-17.2%	-17.2%		
NEORSD - Southern	75,036	45,029	41,013	37,290	33,570	29,998	28,700	27,471	-30,007	27,471	27,471	27,471	27,471	-39.9%	-39.9%	-39.9%	-39.9%	-39.9%		
NEORSD - Southwest	224,176	219,622	219,613	216,838	213,349	208,142	199,292	191,037	-4,554	-4,554	-4,554	-4,554	-4,554	-2.0%	-2.0%	-2.0%	-2.0%	-2.0%		
NEORSD - Western	117,023	99,838	98,115	92,538	88,224	83,417	78,656	74,663	-17,055	-17,055	-17,055	-17,055	-17,055	-14.6%	-14.6%	-14.6%	-14.6%	-14.6%		
No FPA - Bartlesville	N/A*	1,107	1,103	1,097	1,078	1,047	1,004	981	N/A*	N/A*	N/A*	N/A*	N/A*	N/A*	N/A*	N/A*	N/A*	N/A*	N/A*	
No FPA - Chagrin Falls	N/A*	170	171	171	170	168	163	157	150	N/A*	N/A*	N/A*	N/A*	N/A*	N/A*	N/A*	N/A*	N/A*	N/A*	
No FPA - Hunting Valley	N/A*	2,968	2,934	2,925	2,913	2,901	2,891	2,881	2,871	N/A*	N/A*	N/A*	N/A*	N/A*	N/A*	N/A*	N/A*	N/A*	N/A*	
No FPA - Kirtland Hills	N/A*	782	769	753	736	714	693	670	N/A*	N/A*	N/A*	N/A*	N/A*	N/A*	N/A*	N/A*	N/A*	N/A*	N/A*	
No FPA - Olmsted	N/A*	1,530	1,573	1,615	1,644	1,659	1,668	1,672	N/A*	N/A*	N/A*	N/A*	N/A*	N/A*	N/A*	N/A*	N/A*	N/A*	N/A*	
No FPA - Orange	N/A*	3,318	3,351	3,376	3,397	3,420	3,438	3,456	N/A*	N/A*	N/A*	N/A*	N/A*	N/A*	N/A*	N/A*	N/A*	N/A*	N/A*	
No FPA - Waite Hill	N/A*	920	904	883	857	826	799	775	N/A*	N/A*	N/A*	N/A*	N/A*	N/A*	N/A*	N/A*	N/A*	N/A*	N/A*	
No FPA - Willoughby	N/A*	672	654	633	610	586	567	549	N/A*	N/A*	N/A*	N/A*	N/A*	N/A*	N/A*	N/A*	N/A*	N/A*	N/A*	
North Olmsted	57,210	40,463	40,165	39,739	38,927	37,798	36,172	34,645	-16,727	34,645	34,645	34,645	34,645	-29.2%	-29.2%	-29.2%	-29.2%	-29.2%		
North Royalton	23,297	26,910	27,605	28,267	28,697	28,871	27,623	26,495	3,613	3,613	3,613	3,613	3,613	15.3%	15.3%	15.3%	15.3%	15.3%		
Oakman	1,839	1,849	1,898	1,929	1,960	1,991	1,998	1,998	109	109	109	109	109	5.9%	5.9%	5.9%	5.9%	5.9%		
Painesville	20,827	22,825	23,056	22,484	21,894	21,172	20,522	19,855	1,968	1,968	1,968	1,968	1,968	9.4%	9.4%	9.4%	9.4%	9.4%		
Ritman	329	405	400	409	398	383	378	372	76	76	76	76	76	23.1%	23.1%	23.1%	23.1%	23.1%		
Rosky River	64,416	64,568	63,704	62,648	60,826	58,296	55,018	51,013	17,153	17,153	17,153	17,153	17,153	26.6%	26.6%	26.6%	26.6%	26.6%		
Seville	2,417	2,048	2,010	1,985	1,936	1,894	1,872	1,849	-371	-371	-371	-371	-371	-15.3%	-15.3%	-15.3%	-15.3%	-15.3%		
Solon	21,536	23,597	23,954	24,281	24,401	24,452	23,302	22,325	2,069	2,069	2,069	2,069	2,069	9.6%	9.6%	9.6%	9.6%	9.6%		
Spencer	745	498	491	487	472	459	454	448	-248	-248	-248	-248	-248	-33.3%	-33.3%	-33.3%	-33.3%	-33.3%		
Strongsville	17,734	17,483	17,783	17,783	17,920	17,847	18,699	18,181	-271	-271	-271	-271	-271	-1.5%	-1.5%	-1.5%	-1.5%	-1.5%		
Warren	6,890	6,515	6,544	6,573	6,595	6,526	6,522	6,529	-293	-293	-293	-293	-293	-4.3%	-4.3%	-4.3%	-4.3%	-4.3%		
Wadsworth	22,577	22,911	22,911	22,911	22,911	22,911	22,911	22,911	5,044	5,044	5,044	5,044	5,044	22.3%	22.3%	22.3%	22.3%	22.3%		
Wilmington	4,964	5,115	5,171	5,220	5,251	5,281	5,280	5,286	161	161	161	161	161	3.2%	3.2%	3.2%	3.2%	3.2%		
Woodfield Center	1,034	1,052	1,030	1,019	1,019	981	969	965	19	19	19	19	19	1.8%	1.8%	1.8%	1.8%	1.8%		
Willoughby/Eastlake	46,490	45,889	44,579	43,988	42,320	40,471	39,205	37,932	-591	-591	-591	-591	-591	-1.3%	-1.3%	-1.3%	-1.3%	-1.3%		
REGIONAL TOTAL	2,133,052	2,085,117	2,043,454	2,014,492	1,972,591	1,921,976	1,875,586	1,818,000	-347,045	-347,045	-347,045	-347,045	-347,045	-16.3%	-16.3%	-16.3%	-16.3%	-16.3%		

*U.S. Census Bureau, Decennial Census of Population and Housing, 2010 and 2020, <https://www.census.gov/programs-surveys/decennial-census.html>, and U.S. Census Bureau, Census LODES 2006 and Census LODES 2011 Data, <https://ehd.ces.census.gov/data/lodes> (both accessed March 28, 2025).
*Northeast Ohio Sustainable Communities Consortium (NEOSCC), 2011 Parcel-Level Land Use Data from the Cuyahoga County Fiscal Office, Geauga County Auditor, Lake County Auditor, Lorain County Auditor, and Medina County Auditor, data created and tabulated by NOACA in 2013.

Appendix 4E: Population Projections for Facility Planning Areas (FPAs) within the NOACA Region

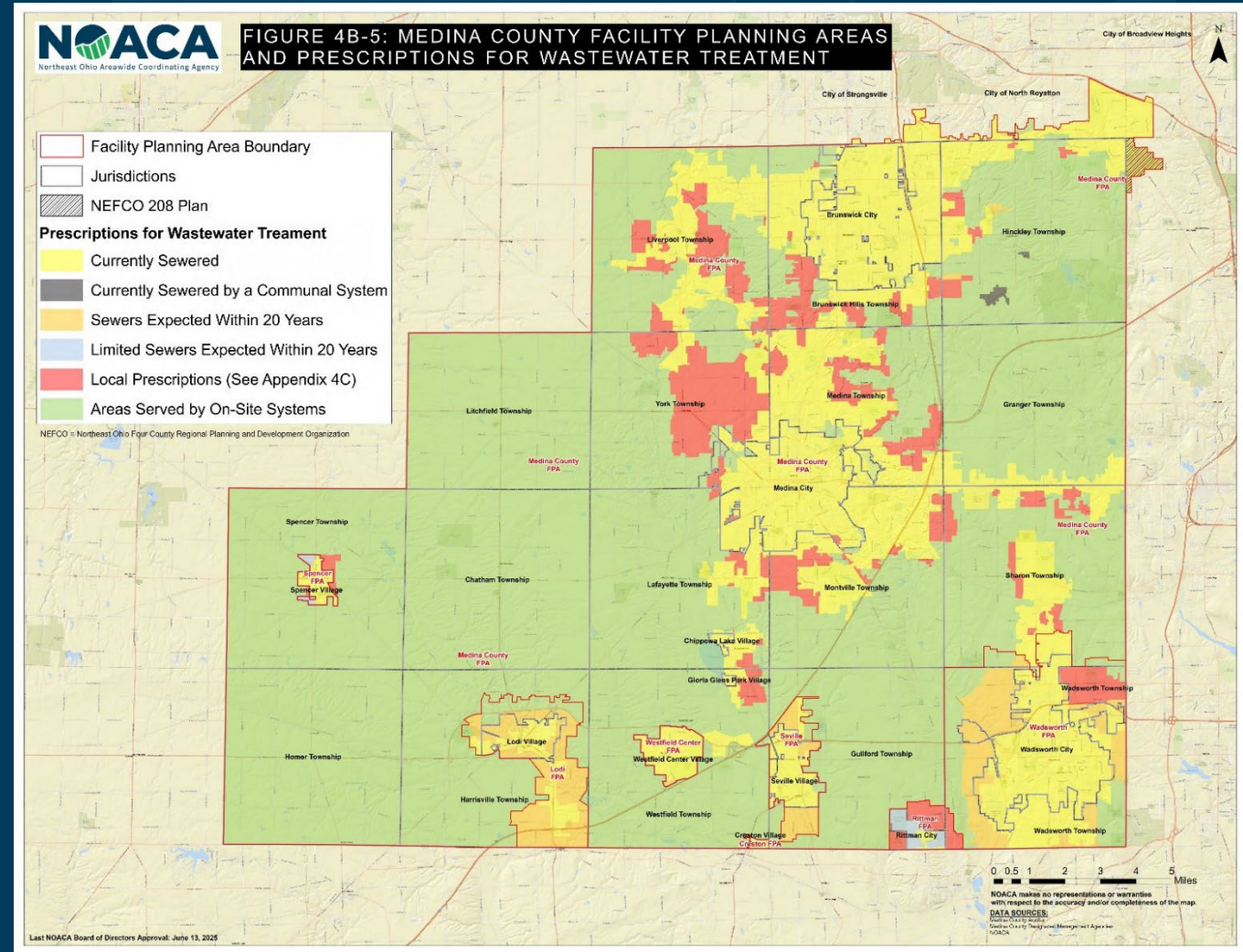
All applications for FPA modifications, National Pollutant Discharge Elimination System (NPDES) permits, wastewater Permits-to-Install (PTIs), and Water Pollution Control Loan Funds (WPCLFs) must conform to the population projections in NOACA's 208 Plan.

Summary

After each decennial census, the Ohio Department of Development (ODOD) releases its county-based population forecasts. NOACA staff developed a disaggregation methodology to convert this data into forecasts at the smaller Transportation Analysis Zone (TAZ) unit. NOACA staff aggregated these TAZ level forecasts to the FPA boundary (see Table 4E-

MEDINA COUNTY FIVE-YEAR UPDATE

- NOACA WQP staff met with Medina County on September 12, 2025
- Largest Designated Management Agency (DMA) in the County
- Established a timeframe and regular meeting schedule
- NOACA will request GIS information from all DMAs early in the process
- Considering eliminating Local Prescriptions for uniformity



MEDINA COUNTY FIVE-YEAR UPDATE

- WQP staff will schedule a Medina County Primary & Secondary Roundtable meeting late Fall 2025
- Agenda will include:
 1. Overview of update process
 2. Areas for discussion
 - Examples from Cuyahoga and Geauga County updates
 3. FPA boundaries and prescriptions realignment to parcel lines and to reflect current sewer service
 4. Meet with Primary DMAs, Secondary DMAs, and/or Affected Jurisdictions as needed/requested
 5. Acknowledgement of Map Accuracy Forms
- WQP staff will present FPA updates to Water Quality Subcommittee in December 2025 or March 2026

CLEAN WATER 2020 WORK

FPA Consistency Review Maps

- Ensured projects are consistent with FPA maps
- Prepared 16 consistency review maps
- Reviewed 38 permits-to-install (PTIs)

FINANCIAL IMPACTS

Ohio EPA contracts and NOACA's local water quality dues fund this work.

NEXT STEPS

NOACA staff will provide quarterly updates on the Water Quality Planning Program to the Water Quality Subcommittee.



NOACA

Northeast Ohio Areawide Coordinating Agency

NOACA will **strengthen** regional cohesion, **preserve** existing infrastructure, and **build** a sustainable multimodal transportation system to **support** economic development and **enhance** quality of life in Northeast Ohio.