

LORAIN E 28TH STREET CORRIDOR TLCI STUDY UPDATE

Safety and Operations Council
August 15, 2025

ACTION REQUESTED

No action is requested. This item is for information and discussion.

PREVIOUS ACTION

No previous action.

PROJECT GOALS

Improve Traffic Safety



Improve Livability



Encourage Redevelopment of Vacant sites



Economic, Social, and Cultural Growth

COMPLETE STREET



Source: FHWA



LORAIN
Ohio



PROJECT STUDY AREA

2.33-mile Corridor on E 28th Street from Broadway to Grove Avenue and half-mile buffer




LORAIN
Ohio

NOACA
Northeast Ohio Areawide Coordinating Agency

PROJECT PHASES

- Phase 1: Data Collection & Existing Condition Analysis
- Phase 2 – Analysis & Alternatives Development
- Phase 3 – Analysis Refinements & Recommendations
- Phase 4 – Implementation Strategy & Documentation



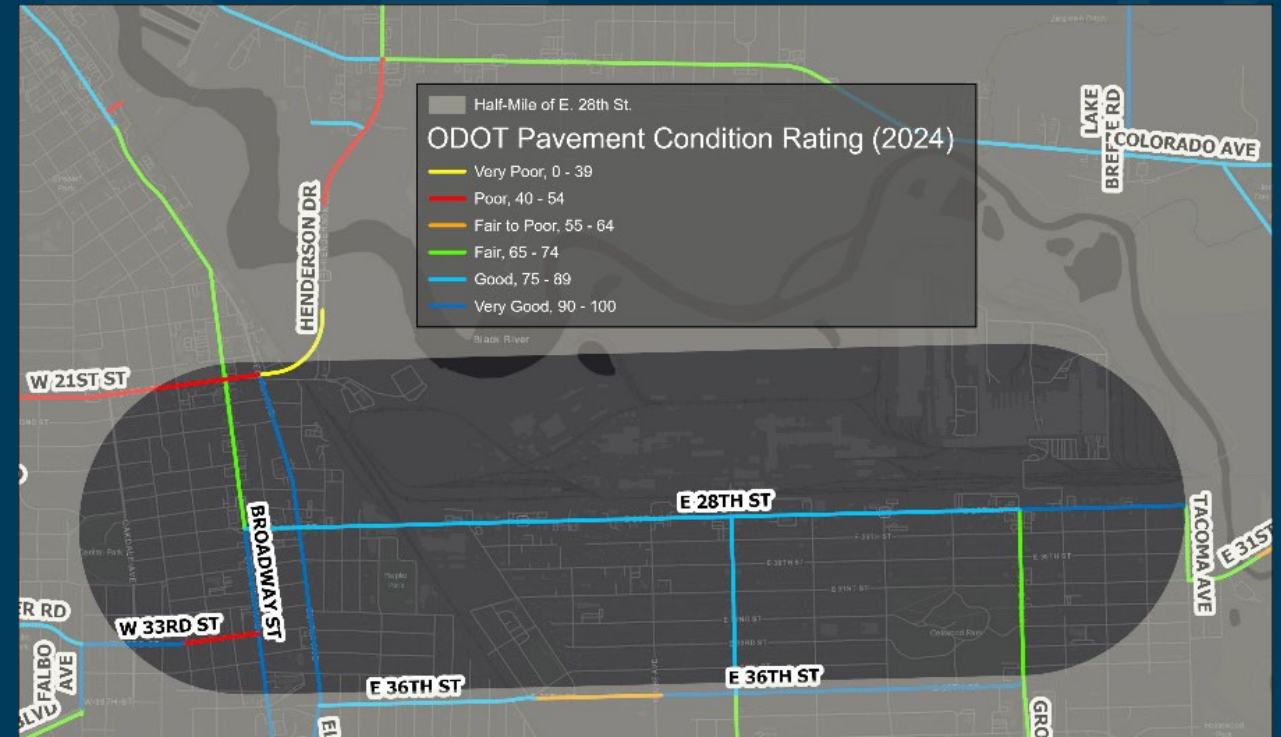
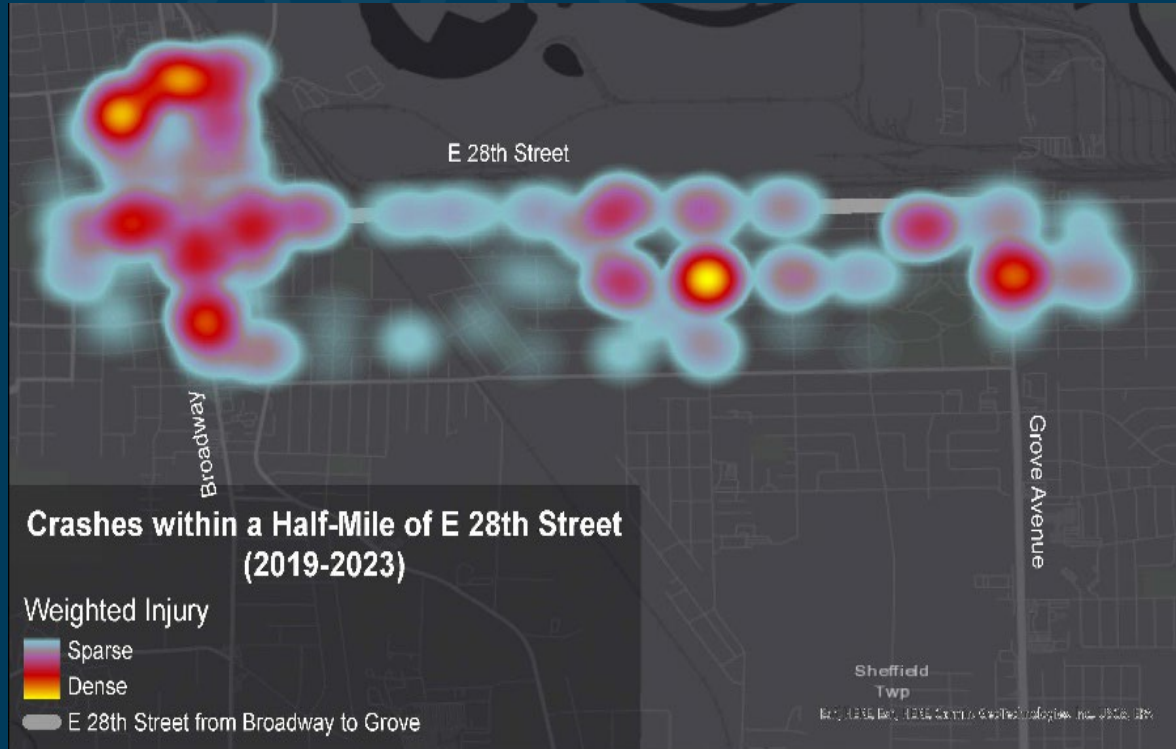
The background features a dark blue color with several faint, light blue icons scattered across it. These icons include a bicycle, a car, a bus, and a pedestrian, representing different modes of transportation.

PHASE 1

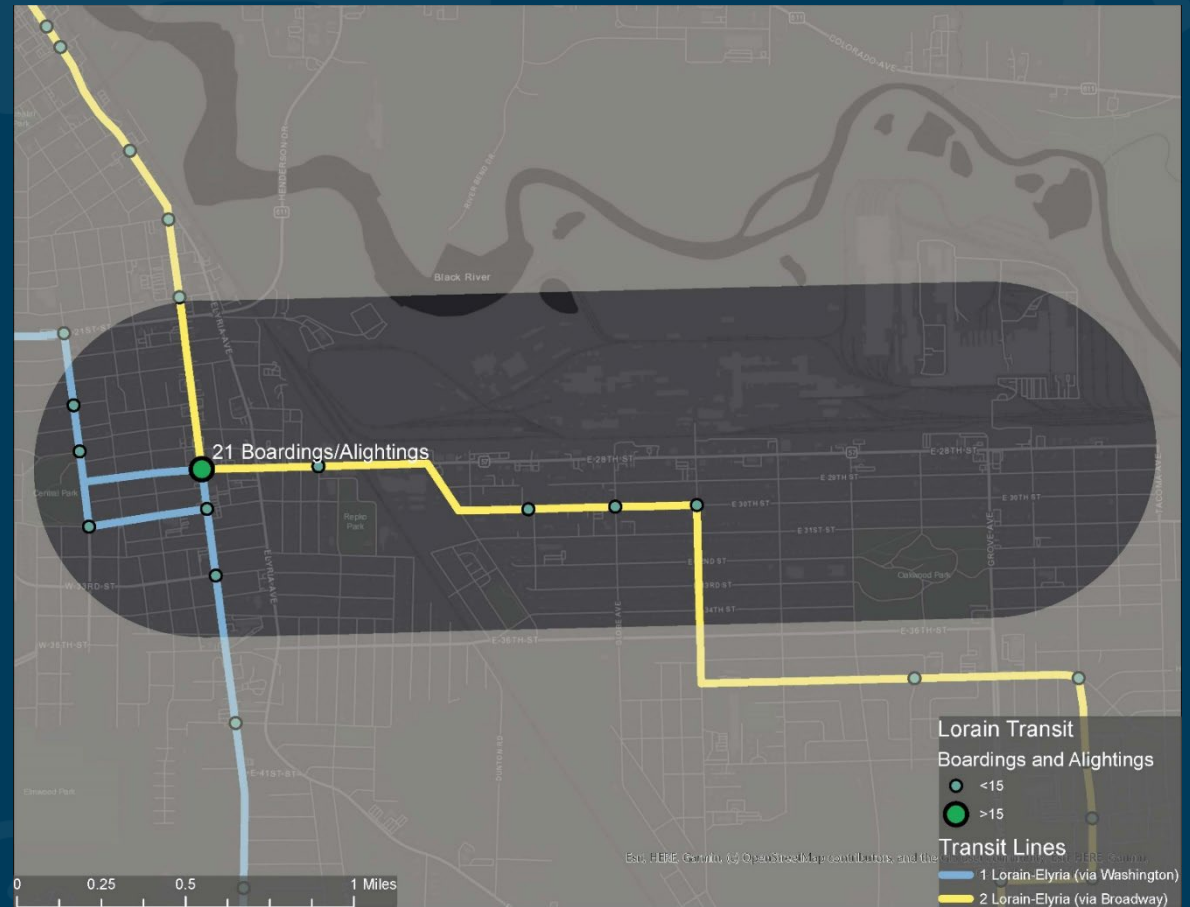
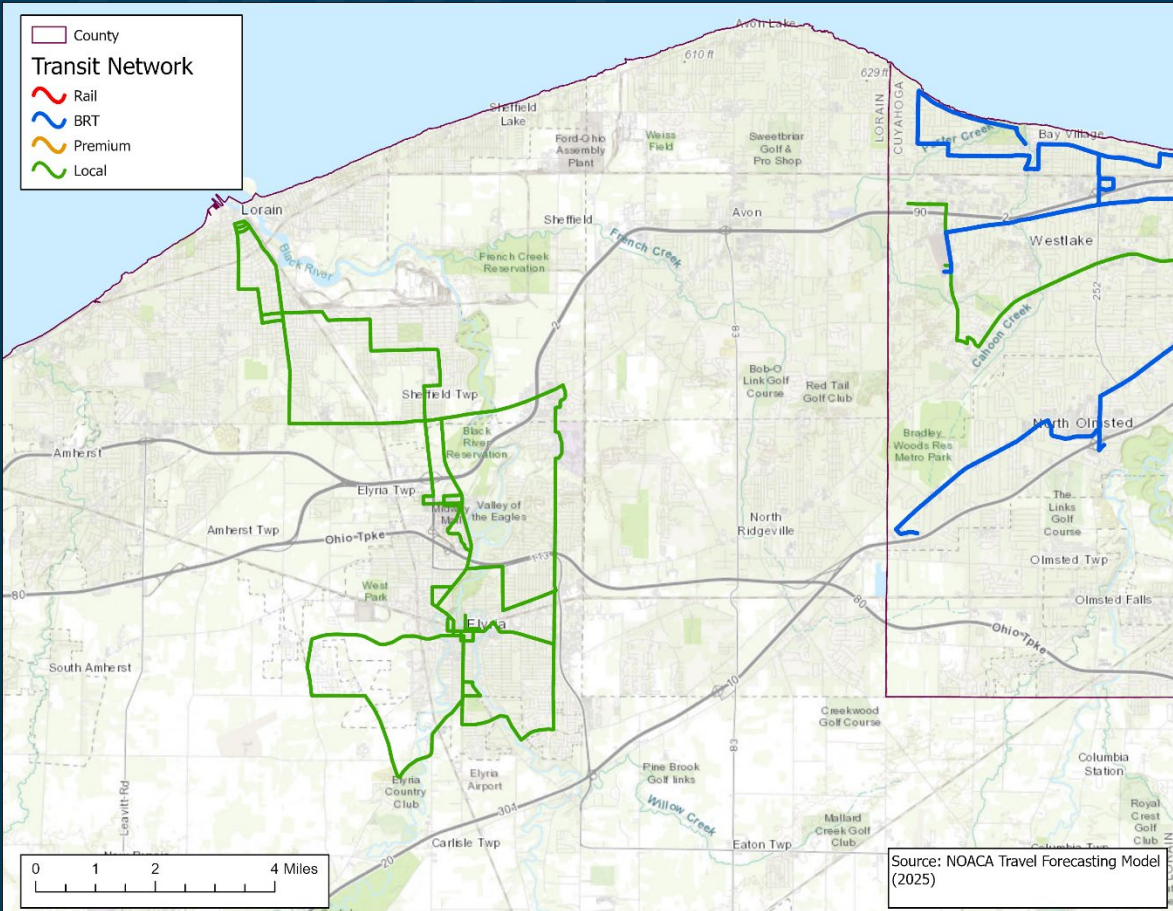
DATA COLLECTION & EXISTING

CONDITION ANALYSIS

DATA COLLECTION



LORAIN COUNTY TRANSIT NETWORK



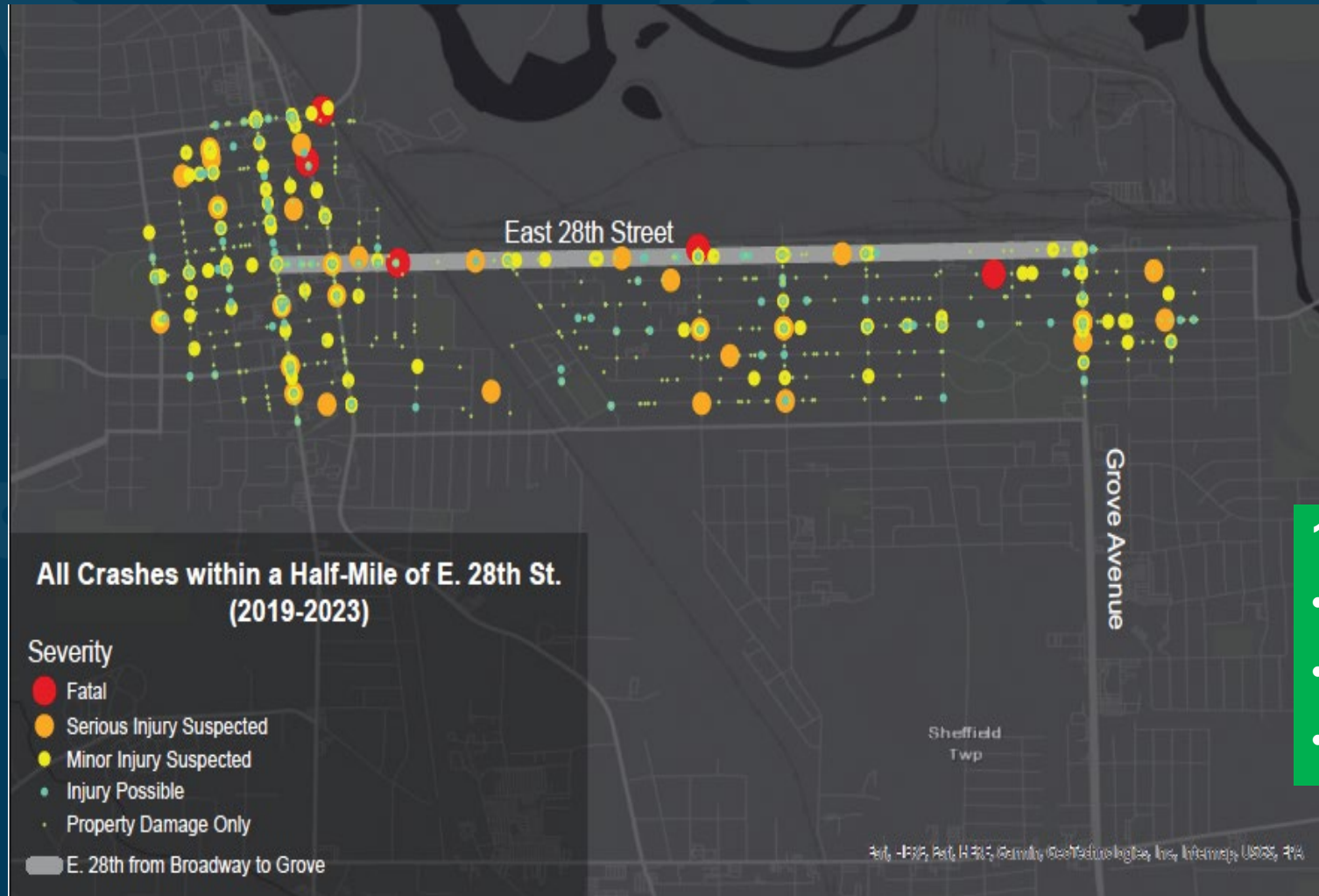
INFRASTRUCTURE CONDITIONS FOR NONMOTORIZED MODES OF TRAVEL



LORAIN
Ohio

NOACA
Northeast Ohio Areawide Coordinating Agency

ALL CRASHES (2019-2023)

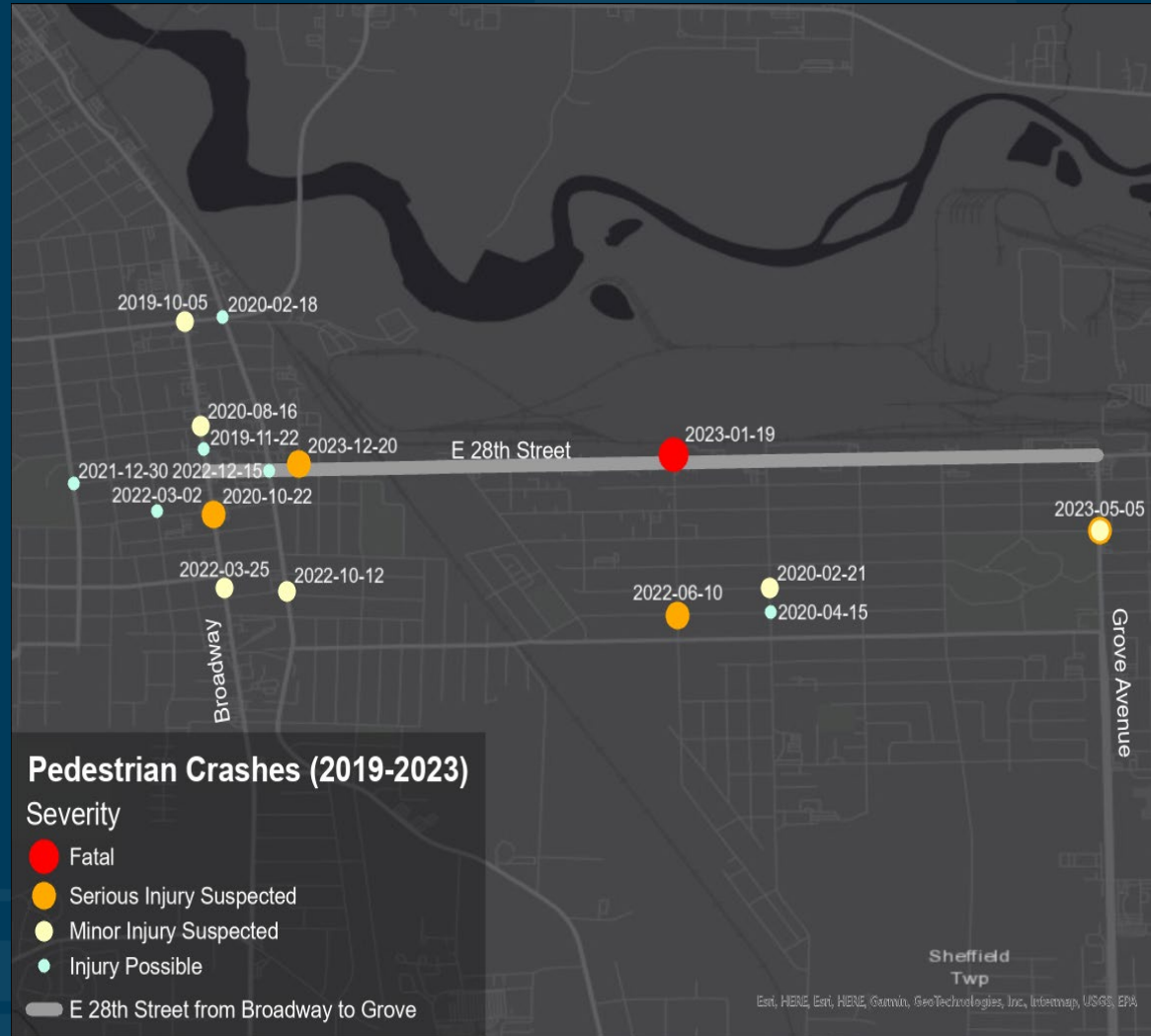


1,065 Total Crashes

- **Five Fatalities**
- **34 Serious Injuries**
- **153 Minor Injuries**



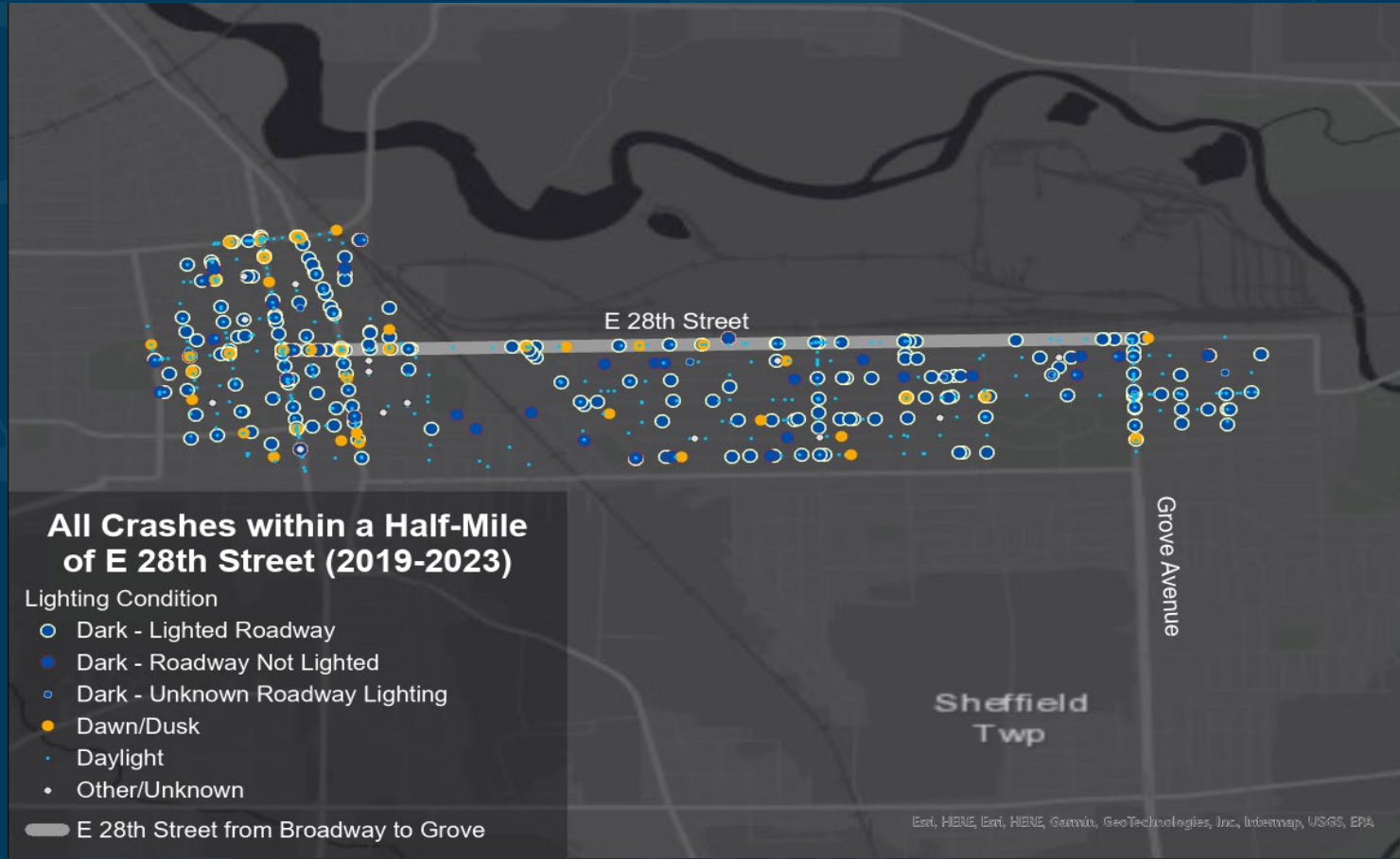
PEDESTRAIN CRASHES (2019-2023)



- 17 Pedestrian Crashes**
- One Fatality
 - Four Serious Injuries
 - Six Minor Injuries
 - Six Possible Injuries



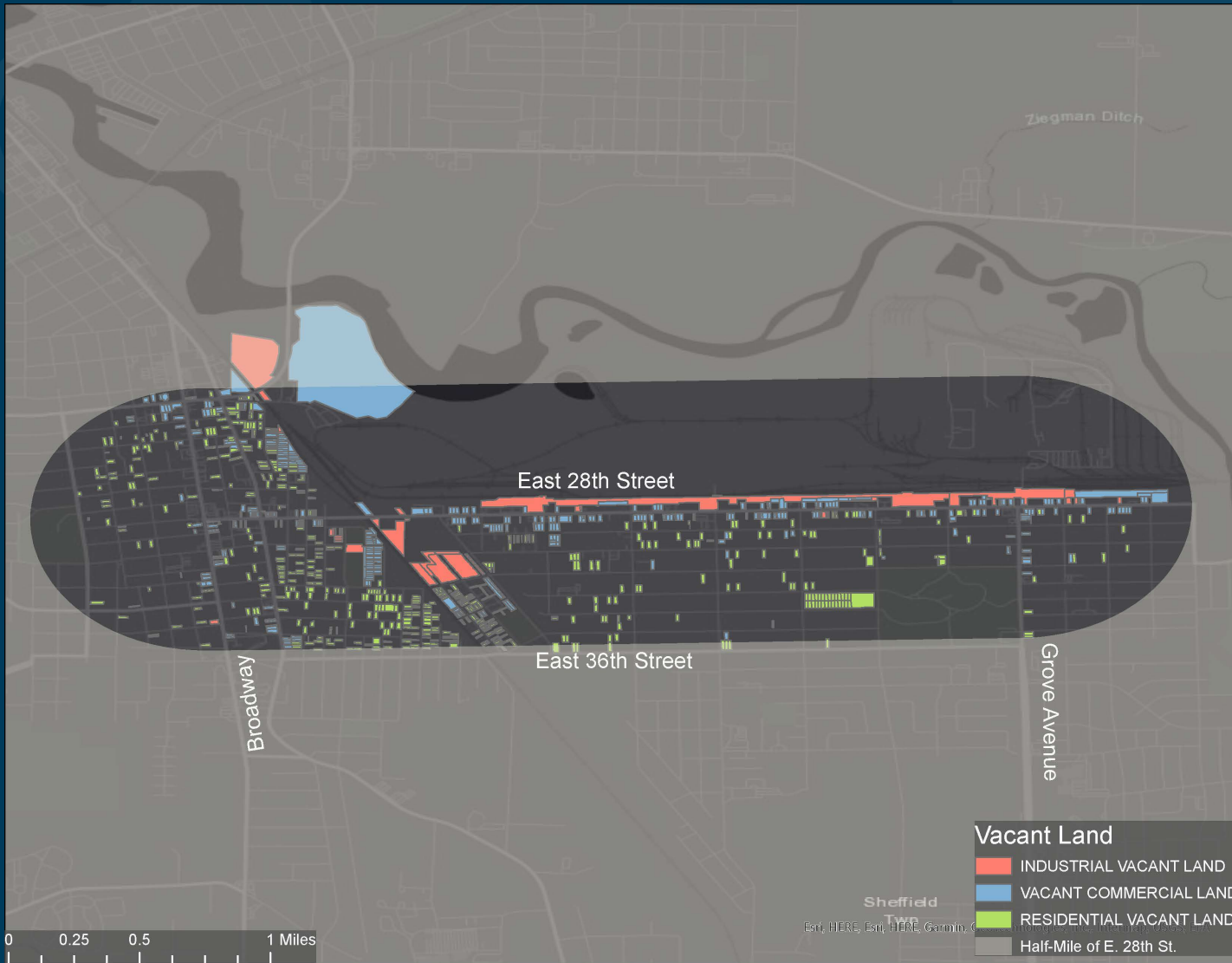
CRASHES AND LIGHTING



- Good lighting is an important component to traffic safety
- Many streetlights in the corridor are malfunctioning



VACANT LAND



- Study area: 3.117 Sq. Miles
- All Parcels: 2.492 Sq. Miles
80% of the Study area
- Vacant Parcels: 0.2982 Sq. Miles
12% of All Parcels
9.6% of the Study area



OTHER PLANS AND STUDIES

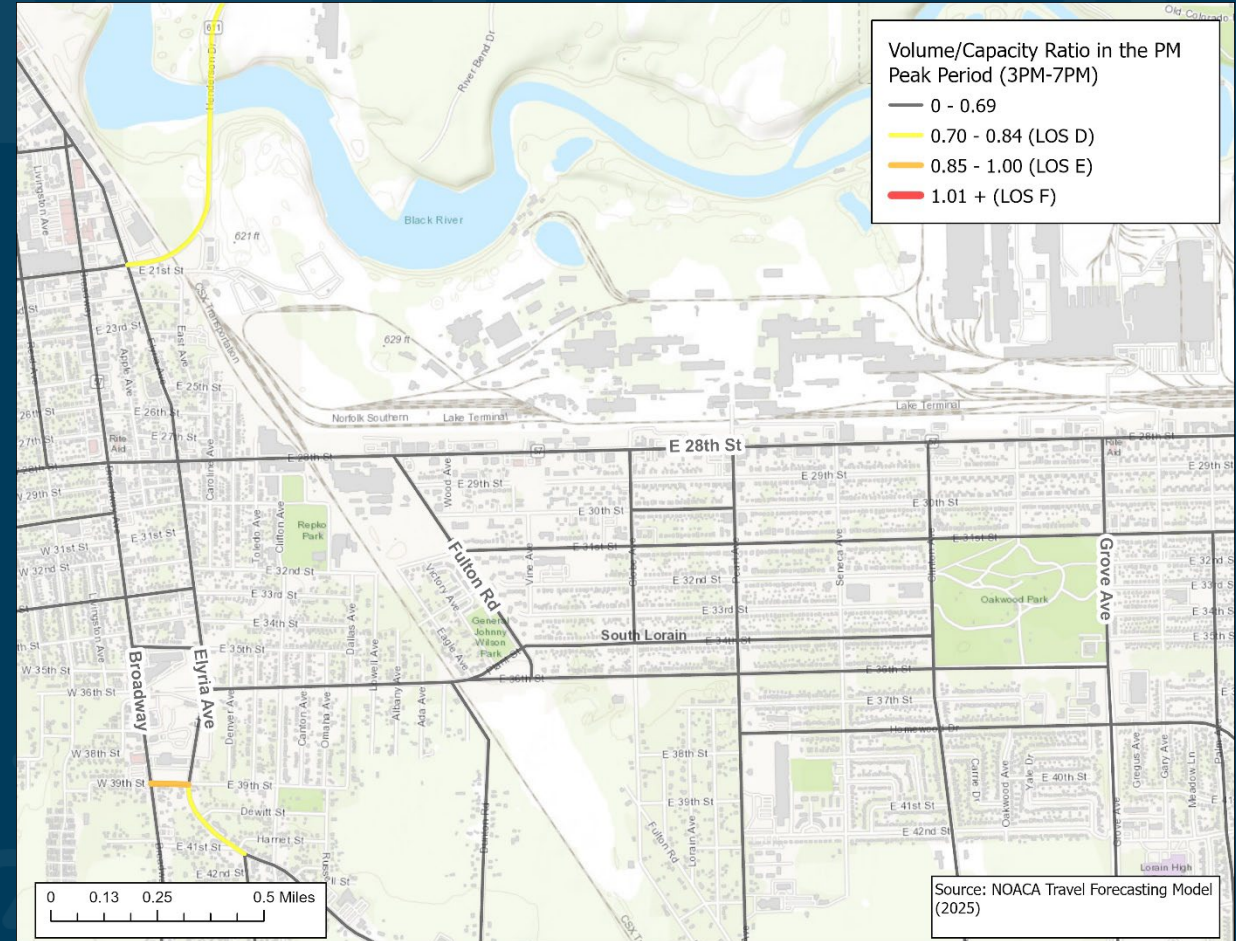
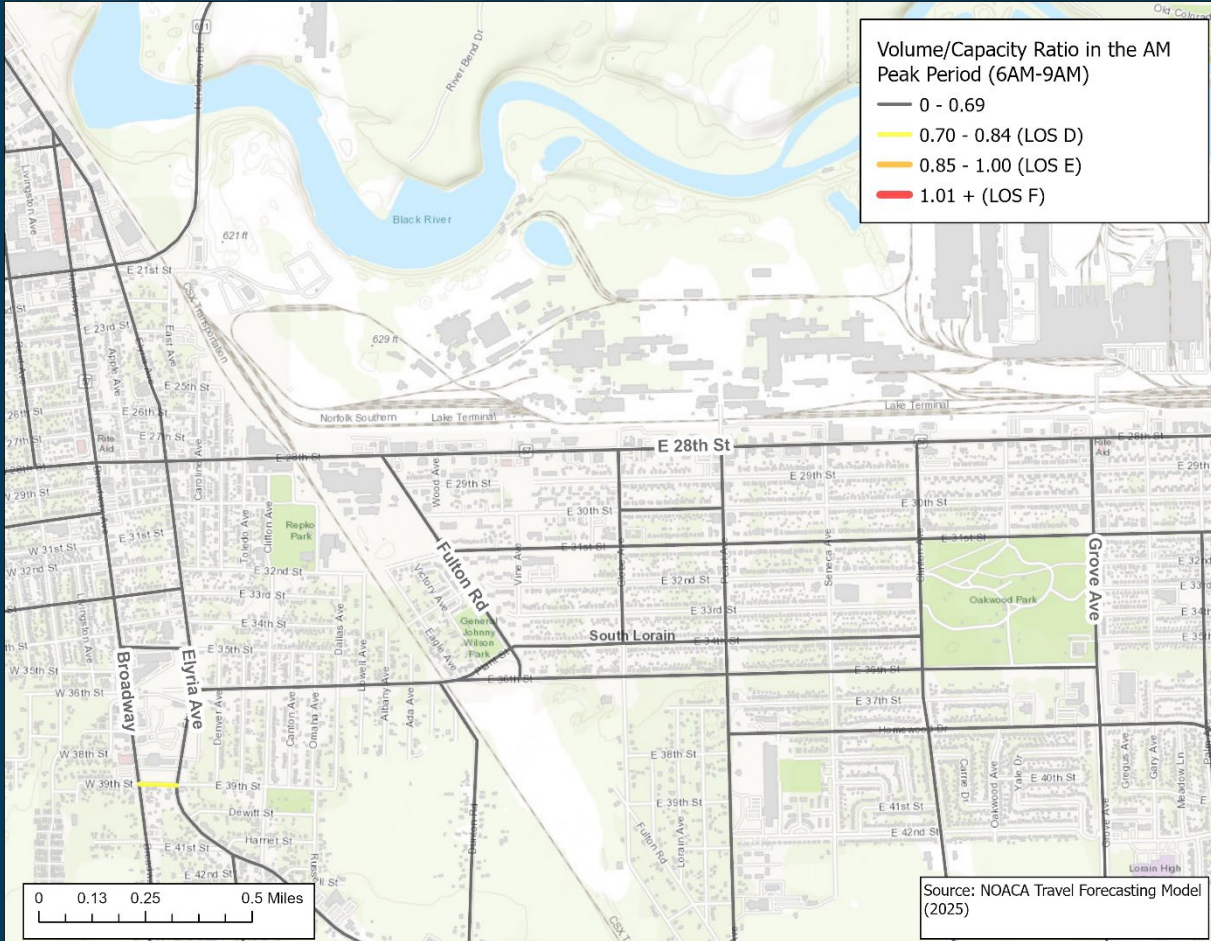
- Lorain Active Transportation Plan
- Lorain County Community Health Assessment
- Southside Gateway Community Plan
- Lorain County Transit



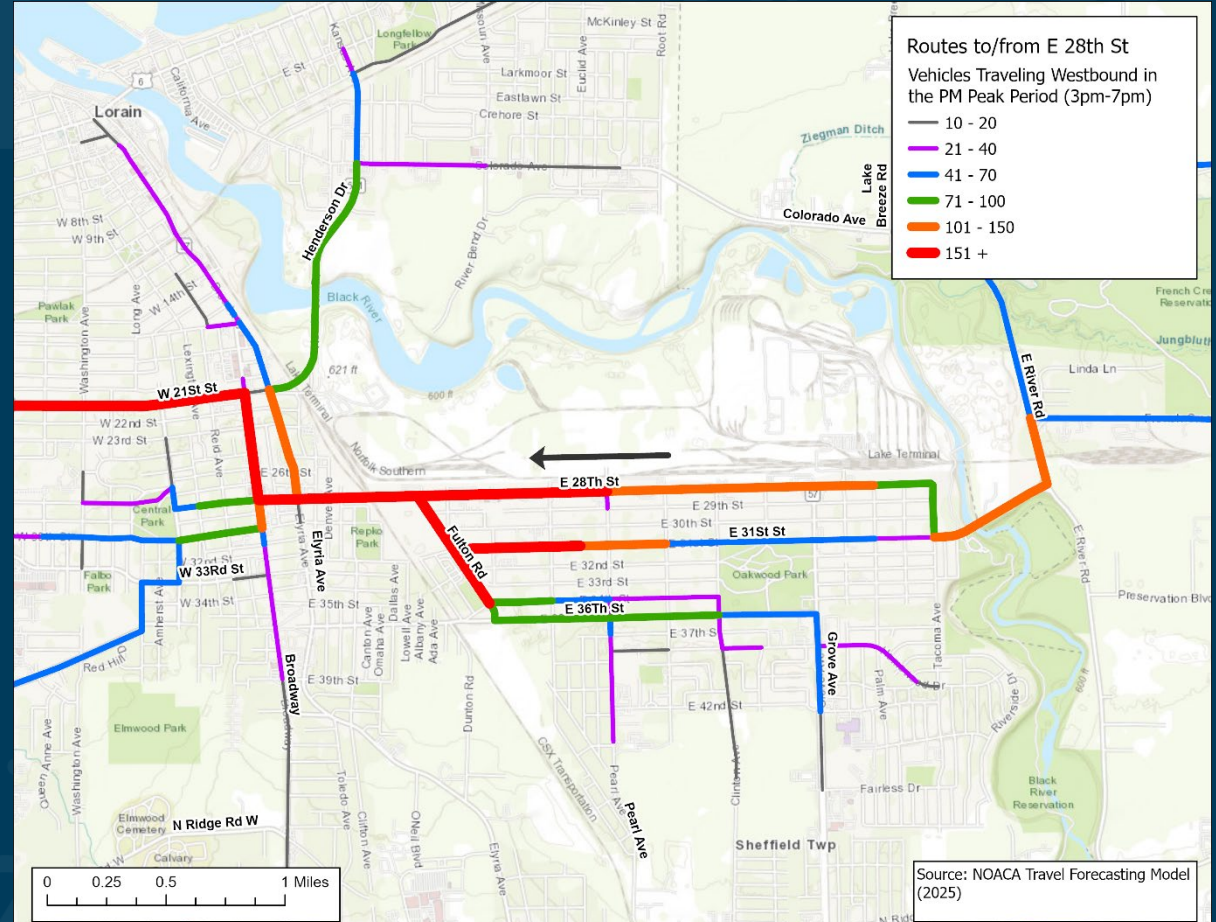
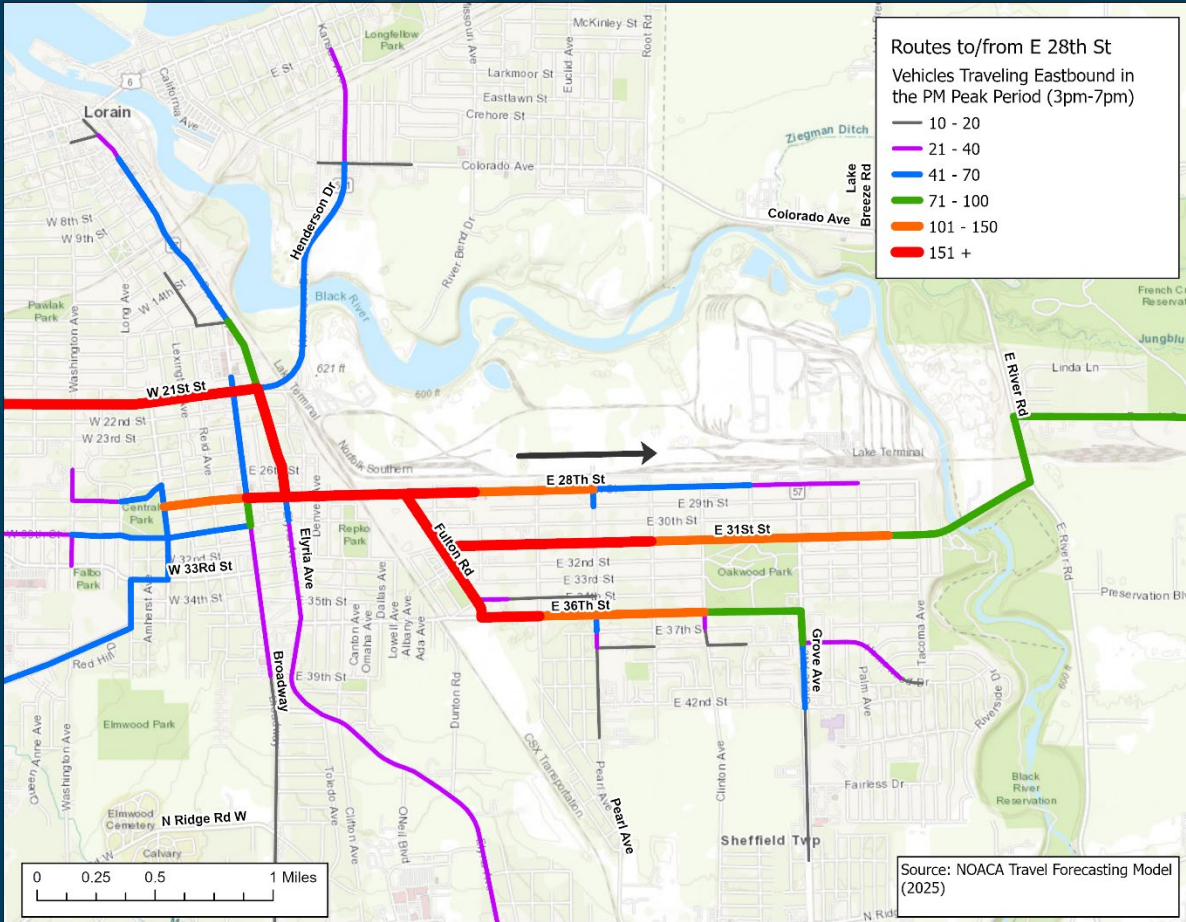
The background is a dark blue gradient with faint, light blue icons of a bicycle, a car, a bus, and a pedestrian scattered across it.

PHASE 2 ANALYSIS & ALTERNATIVES DEVELOPMENT

TRAFFIC CONGESTION



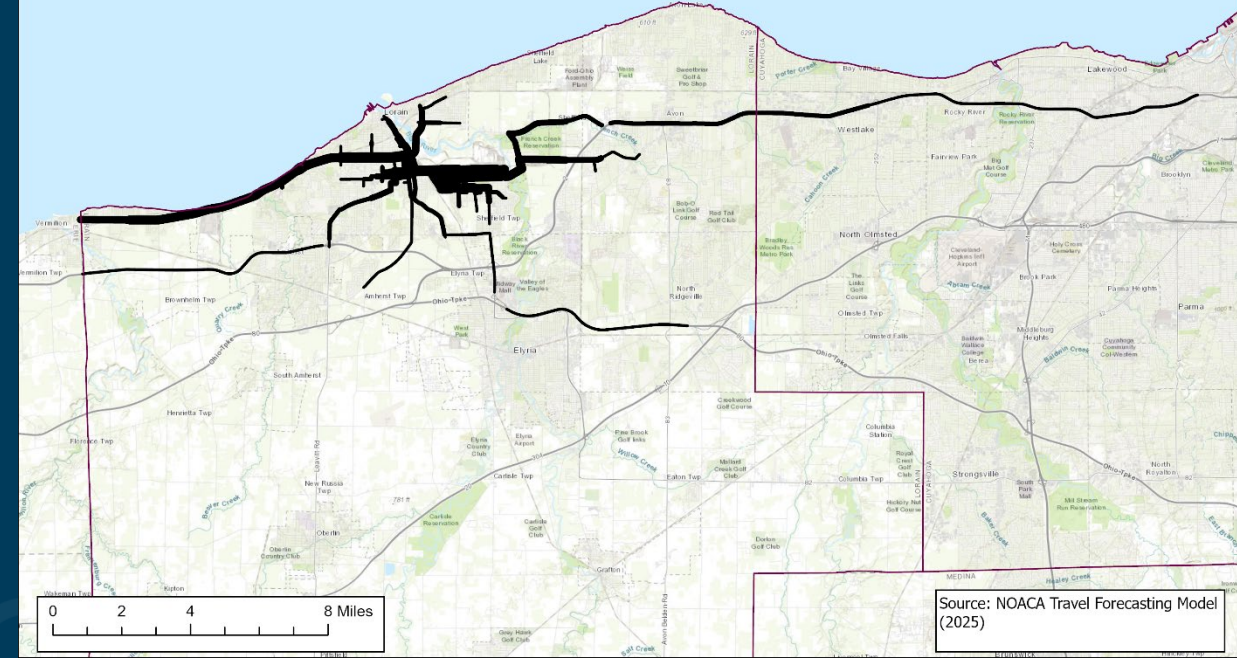
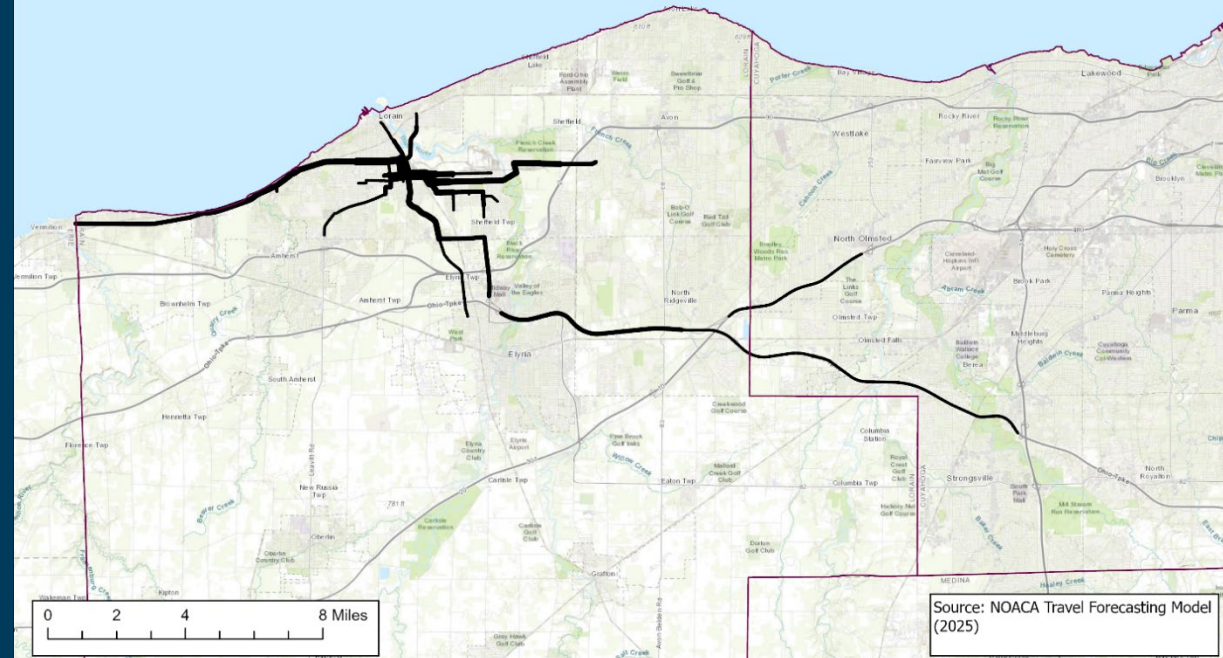
VEHICULAR TRAFFIC IN THE PM PEAK PERIOD



TRAFFIC THROUGH THE CORRIDOR

Routes to and from E 28th St in the AM Peak Period (6AM-9AM)

Routes to and from E 28th St in the PM Peak Period (3PM-7PM)



Through Traffic : 25% to 30%



LORAIN
Ohio

NOACA
Northeast Ohio Areawide Coordinating Agency

FINANCIAL IMPACTS

None



NEXT STEPS

Staff will continue updating the council as the project progresses.





NOACA

Northeast Ohio Areawide Coordinating Agency

NOACA will **strengthen** regional cohesion, **preserve** existing infrastructure, and **build** a sustainable multimodal transportation system to **support** economic development and **enhance** quality of life in Northeast Ohio.