

# LORAIN E 28<sup>TH</sup> STREET CORRIDOR TLCI STUDY UPDATE

Transit Council  
August 15, 2025

# **ACTION REQUESTED**

**No action is requested. This item is for information and discussion.**

# **PREVIOUS ACTION**

**No previous action.**

# PROJECT GOALS

Improve Traffic Safety



Improve Livability



Encourage Redevelopment of Vacant sites



Economic, Social, and Cultural Growth

# COMPLETE STREET



Source: FHWA

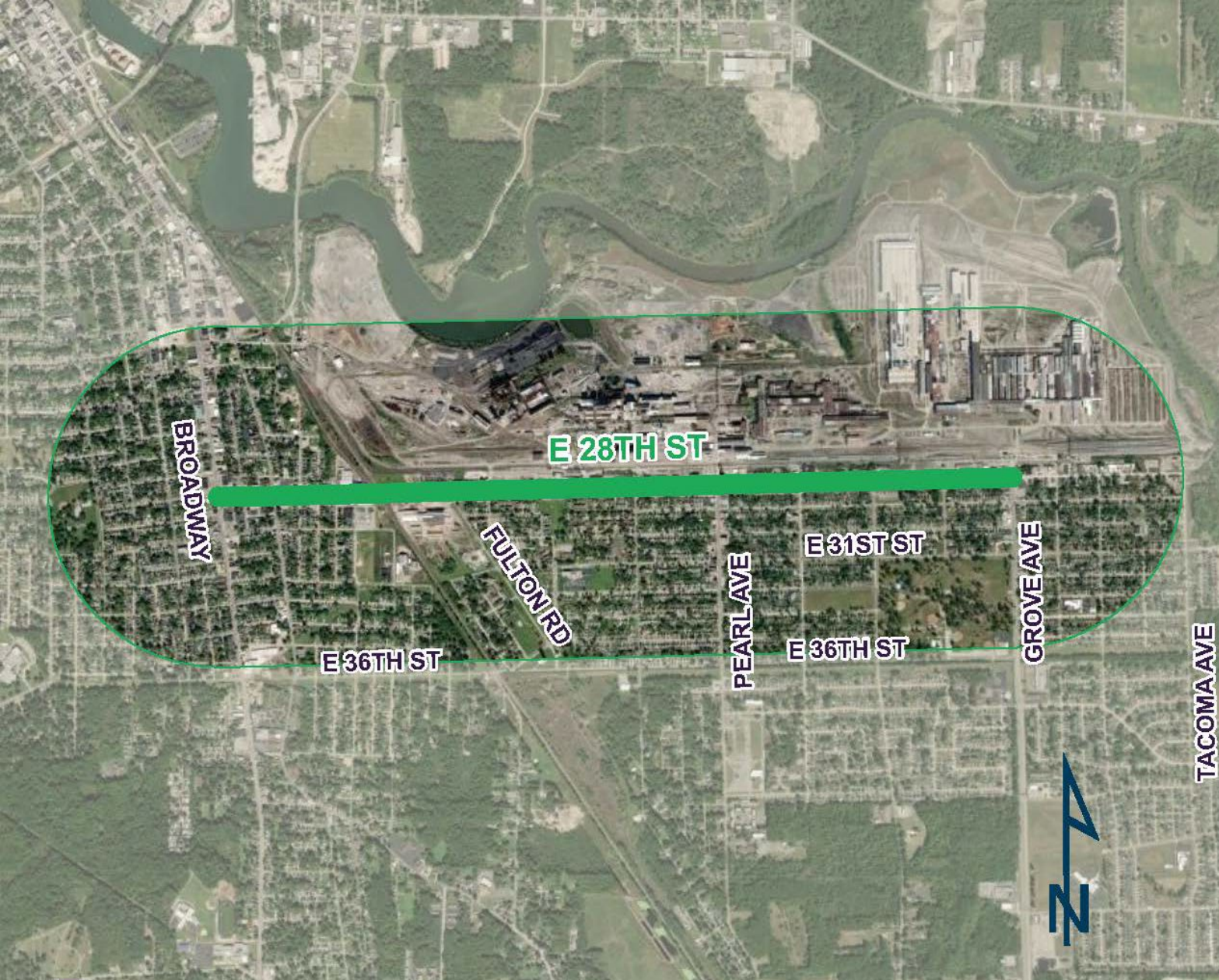


**LORAIN**  
*Ohio*

**NOACA**  
Northeast Ohio Areawide Coordinating Agency

# PROJECT STUDY AREA

2.33-mile Corridor on E. 28<sup>th</sup> Street from Broadway to Grove Avenue and half-mile buffer




**LORAIN**  
*Ohio*

**NOACA**  
Northeast Ohio Areawide Coordinating Agency

# PROJECT PHASES

- Phase 1: Data Collection & Existing Condition Analysis
- Phase 2 – Analysis & Alternatives Development
- Phase 3 – Analysis Refinements & Recommendations
- Phase 4 – Implementation Strategy & Documentation



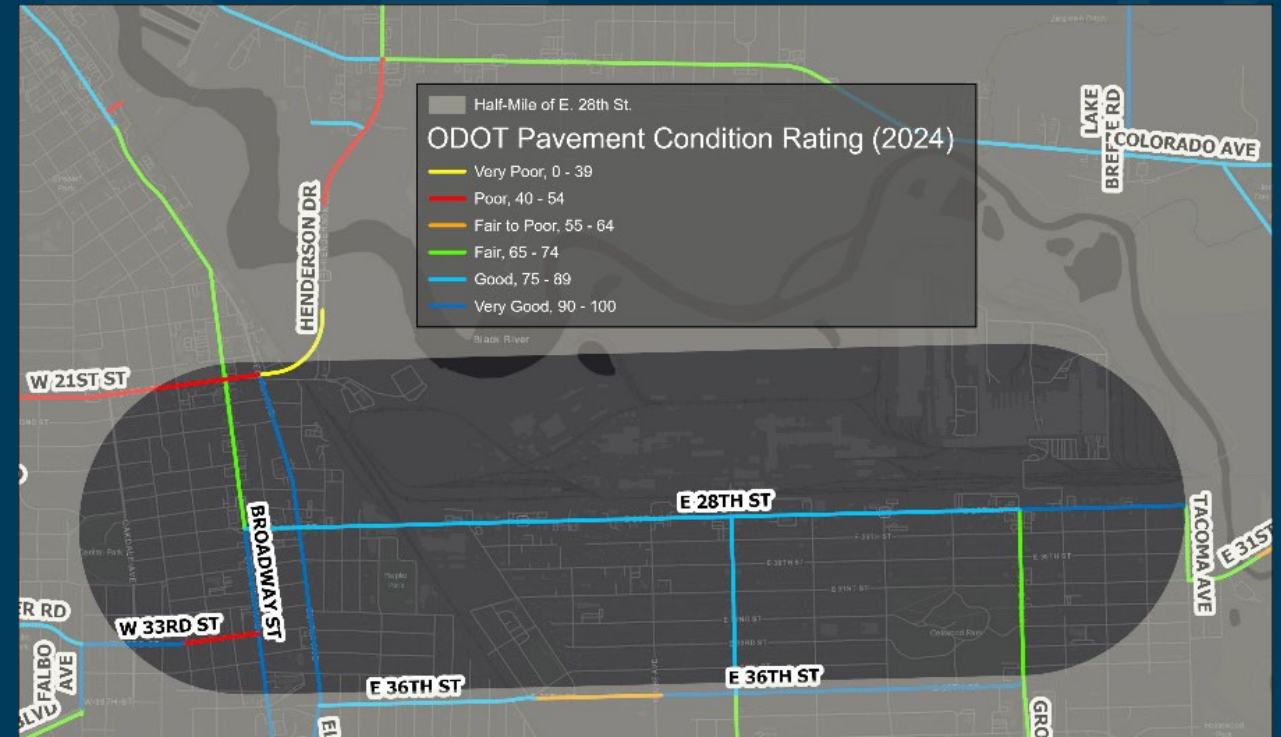
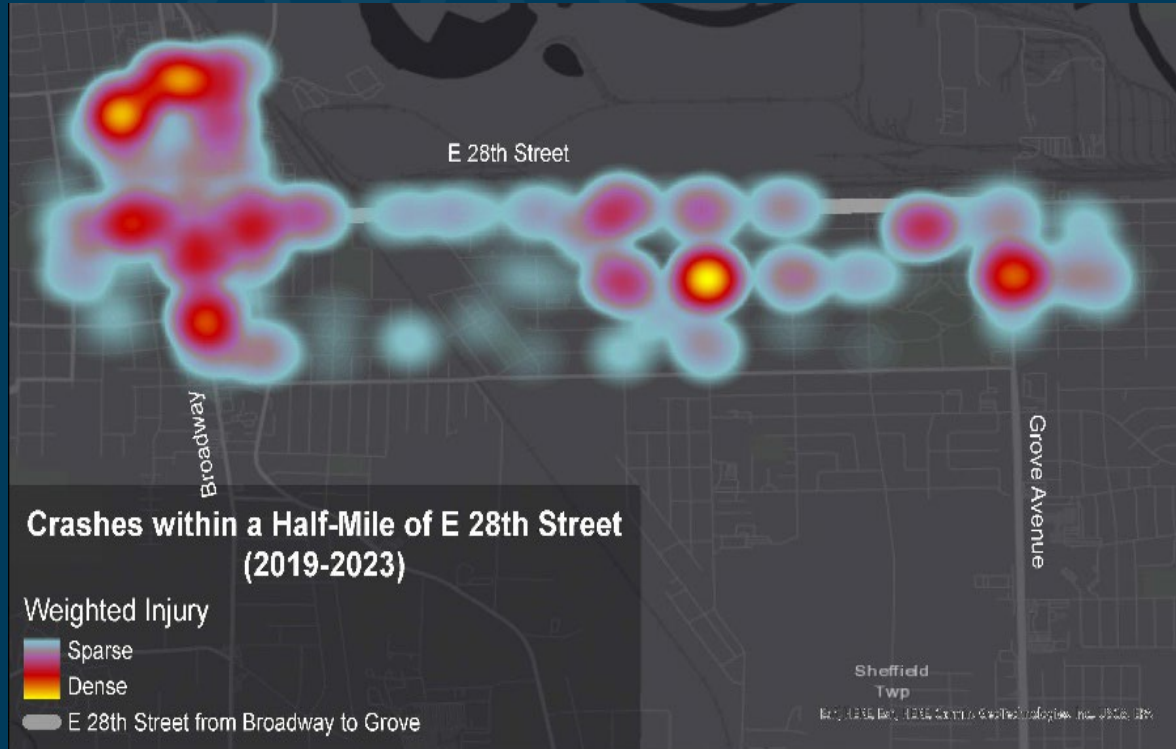
The background features a dark blue gradient with faint, light blue icons of a bicycle, a car, a bus, and a pedestrian, scattered across the page. The main text is centered and reads:

# **PHASE 1**

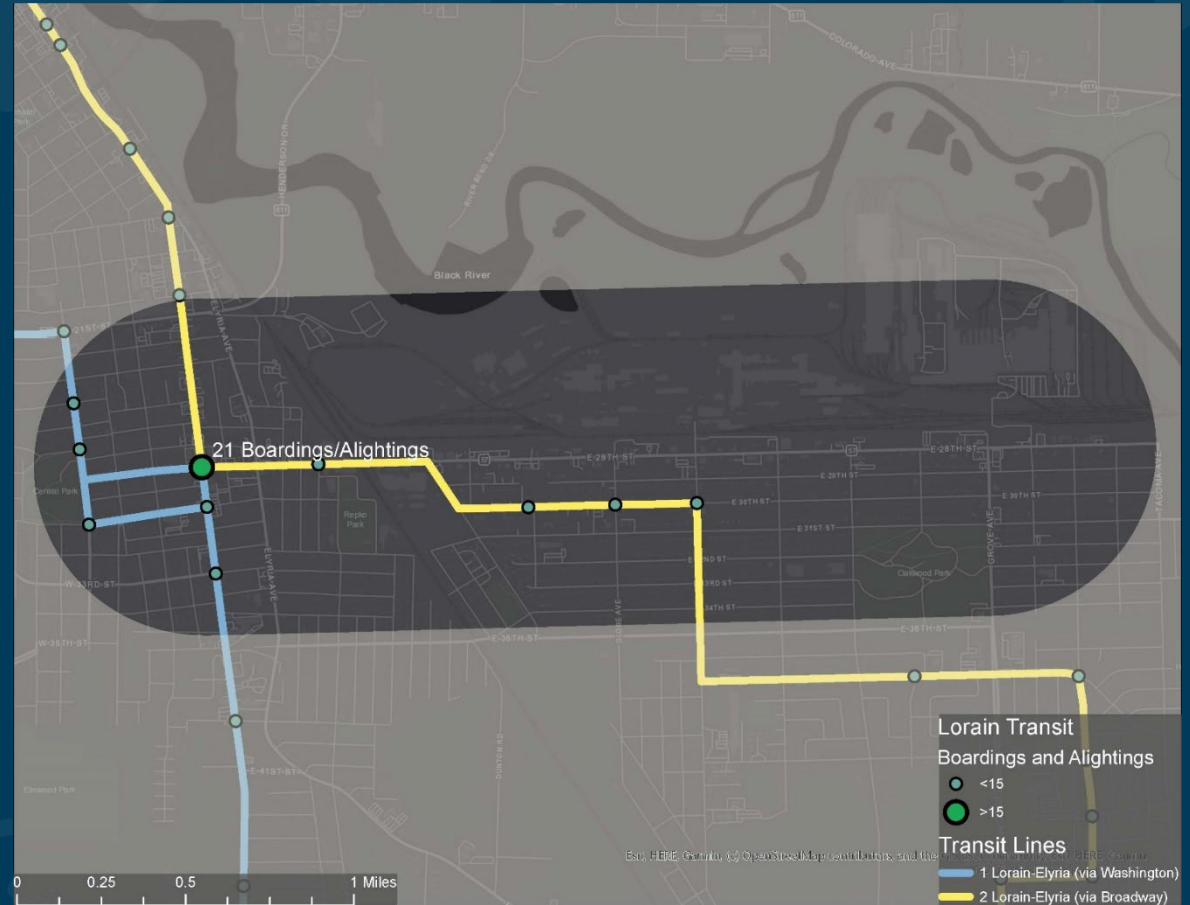
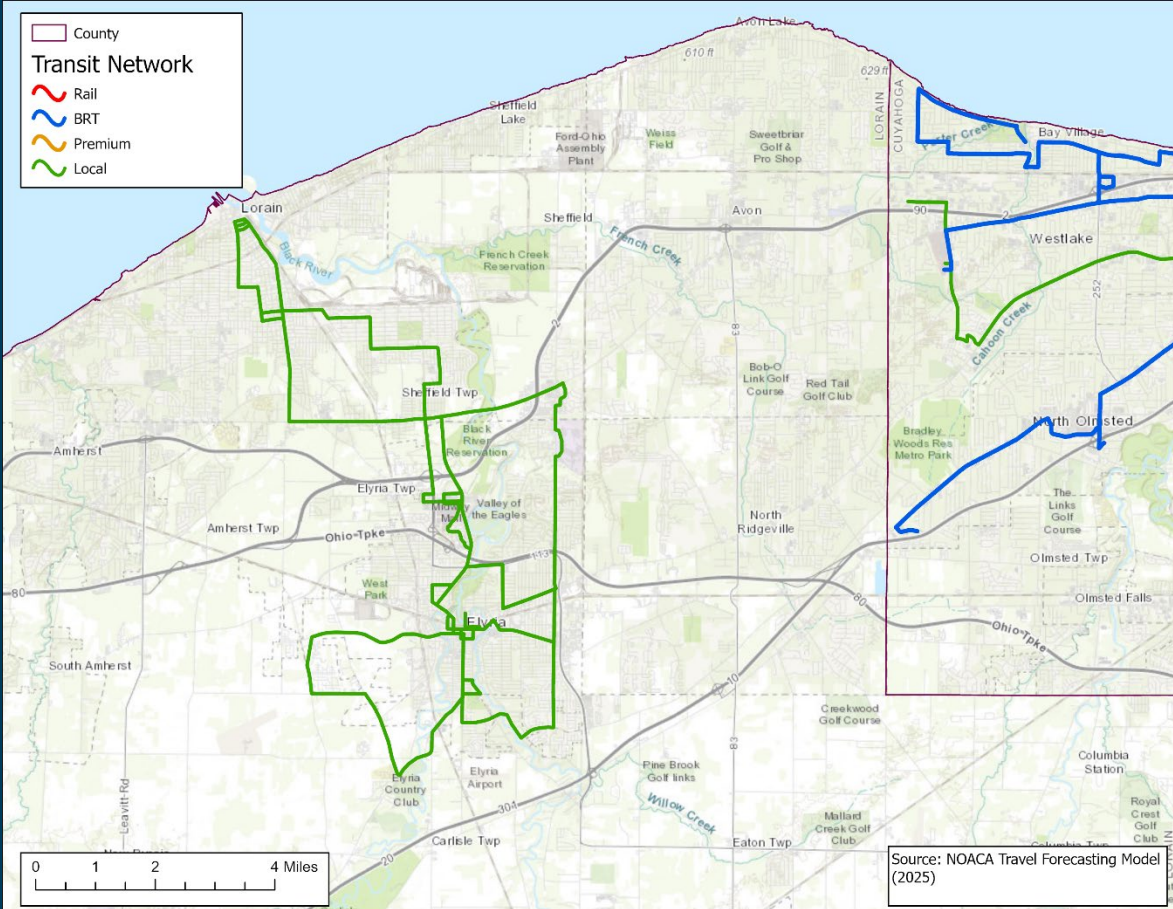
# **DATA COLLECTION & EXISTING**

# **CONDITION ANALYSIS**

# DATA COLLECTION



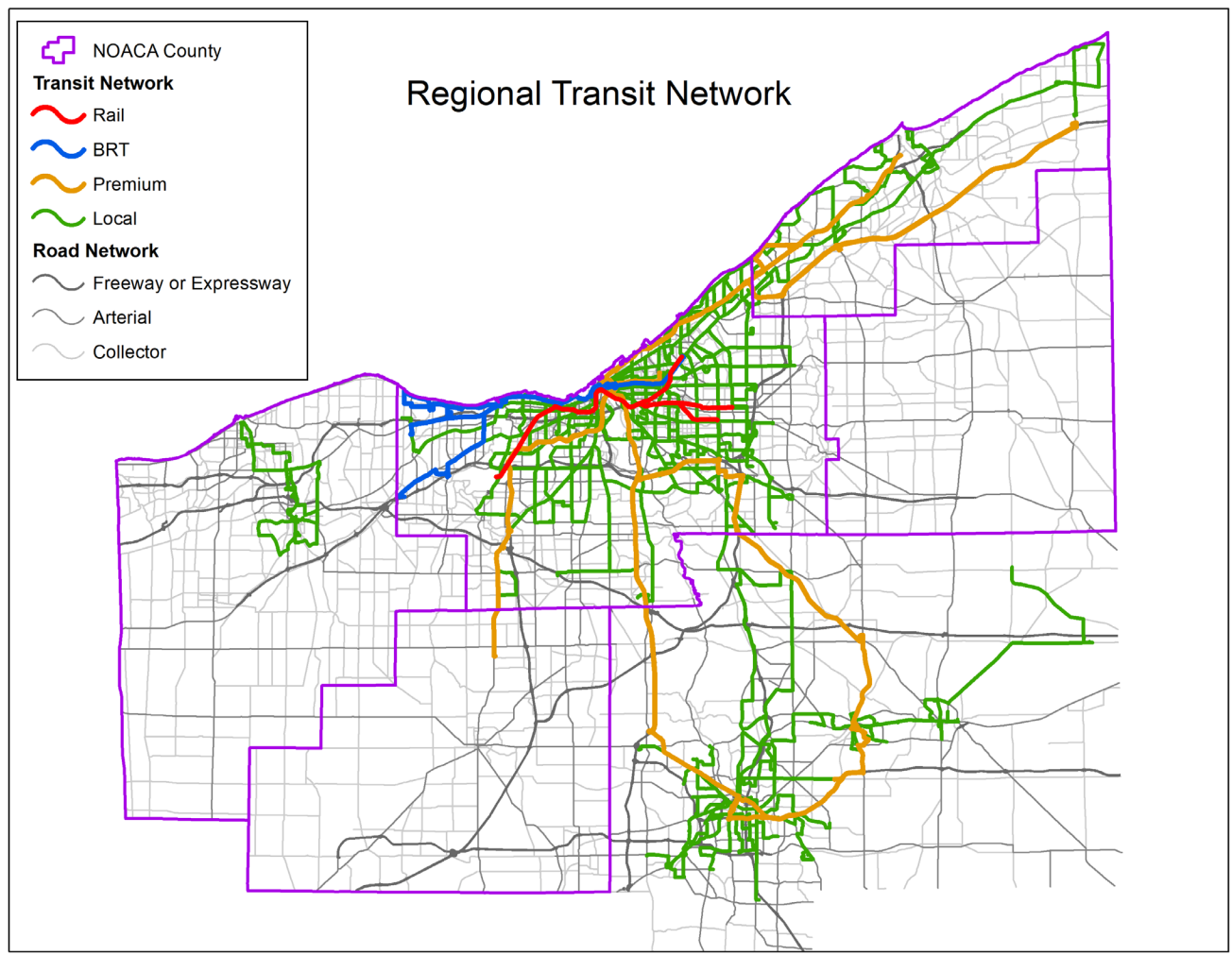
# LORAIN COUNTY TRANSIT NETWORK



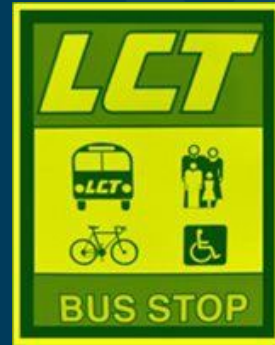
**LORAIN**  
*Ohio*

**NOACA**  
Northeast Ohio Areawide Coordinating Agency

# LORAIN COUNTY TRANSIT NETWORK



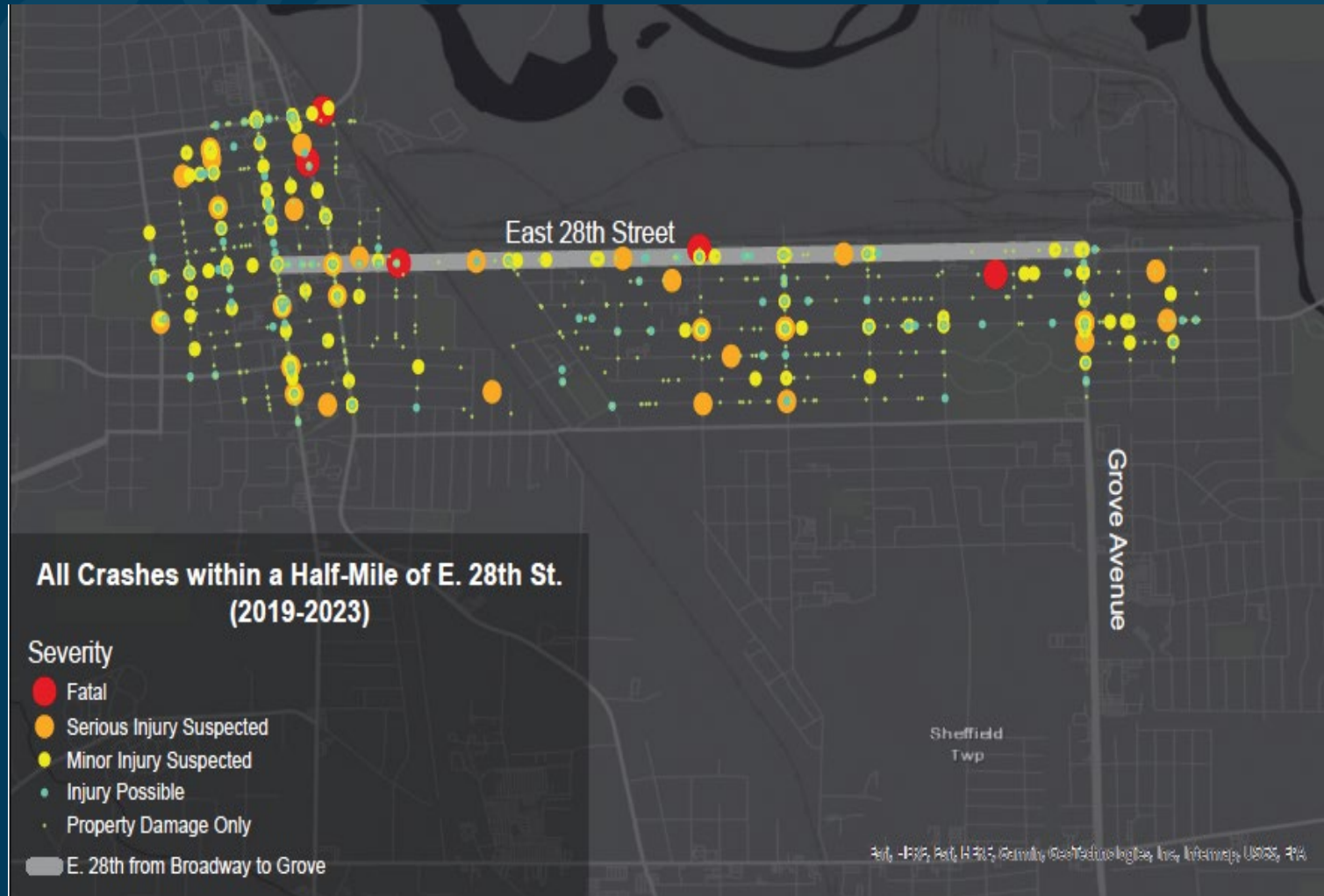
# TRANSIT STOPS



- No existing benches or shelters
- Faded or nonexistent crosswalks



# ALL CRASHES (2019-2023)

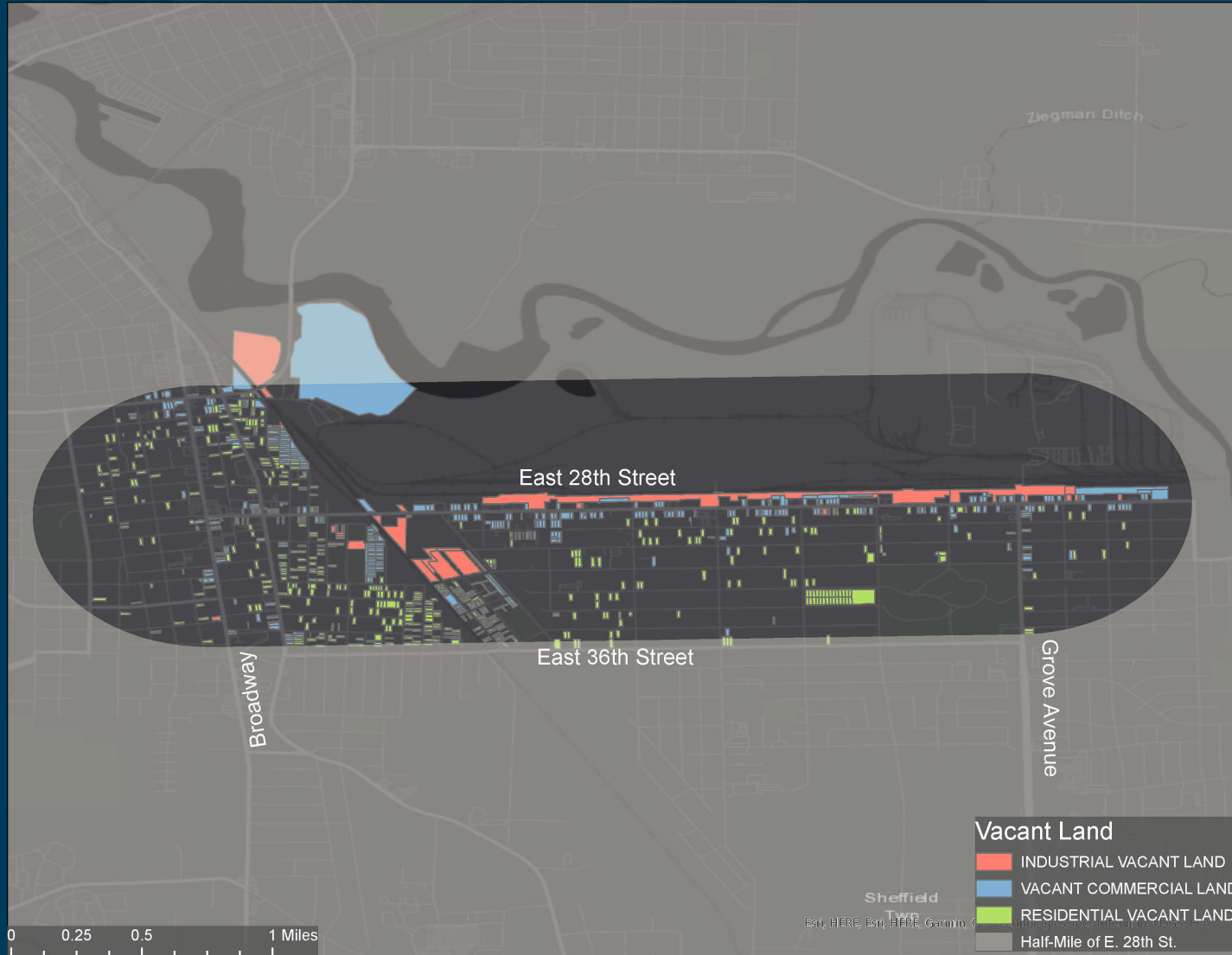


**1,065 Total Crashes**

- Five Fatalities
- 34 Serious Injuries
- 153 Minor Injuries



# VACANT LAND



- **Study area: 3.117 sq. mi.**
- **All Parcels: 2.492 sq. mi.**
  - 80% of the Study area
- **Vacant Parcels: 0.2982 sq. mi.**
  - 12% of All Parcels
  - 9.6% of the Study area



# OTHER PLANS AND STUDIES

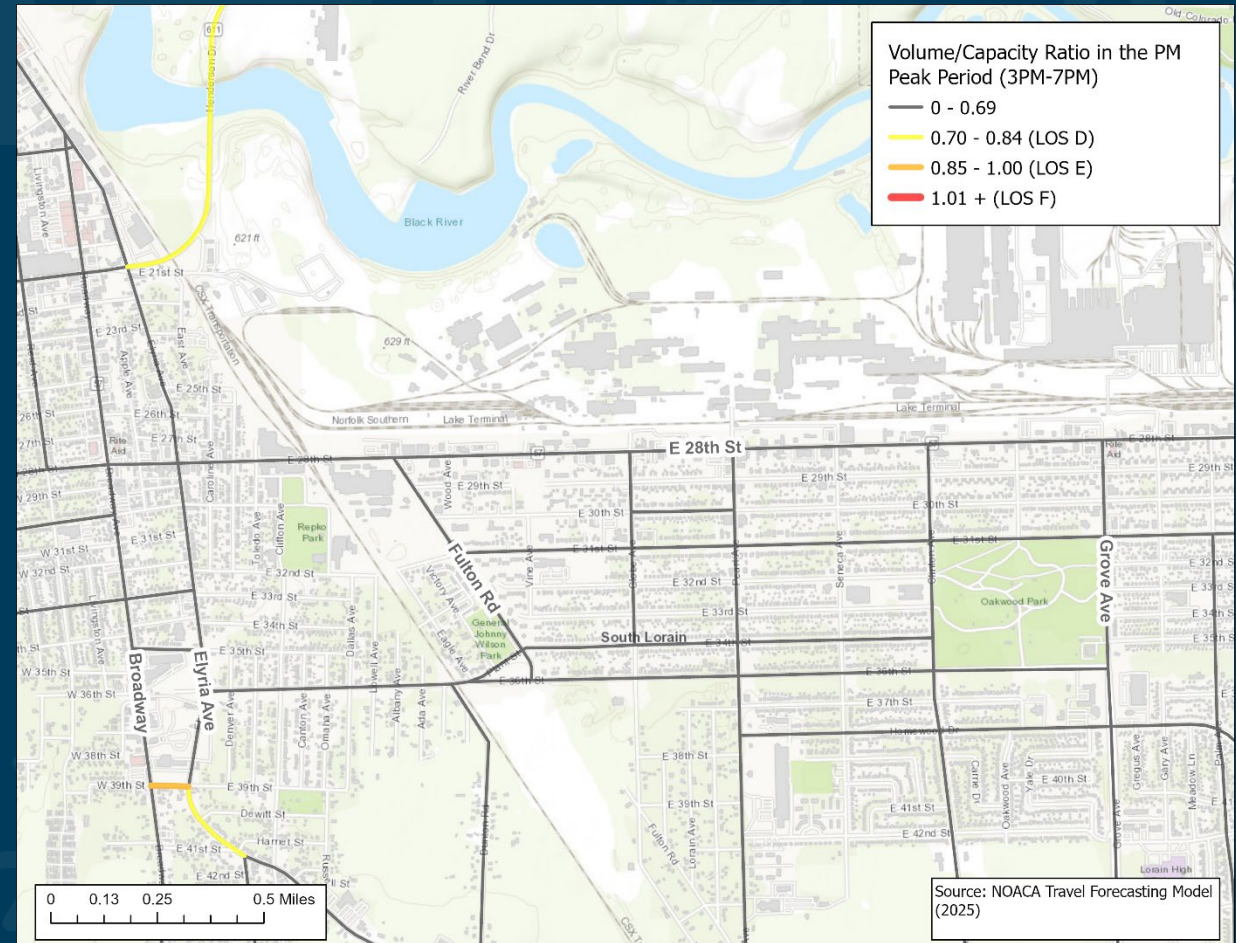
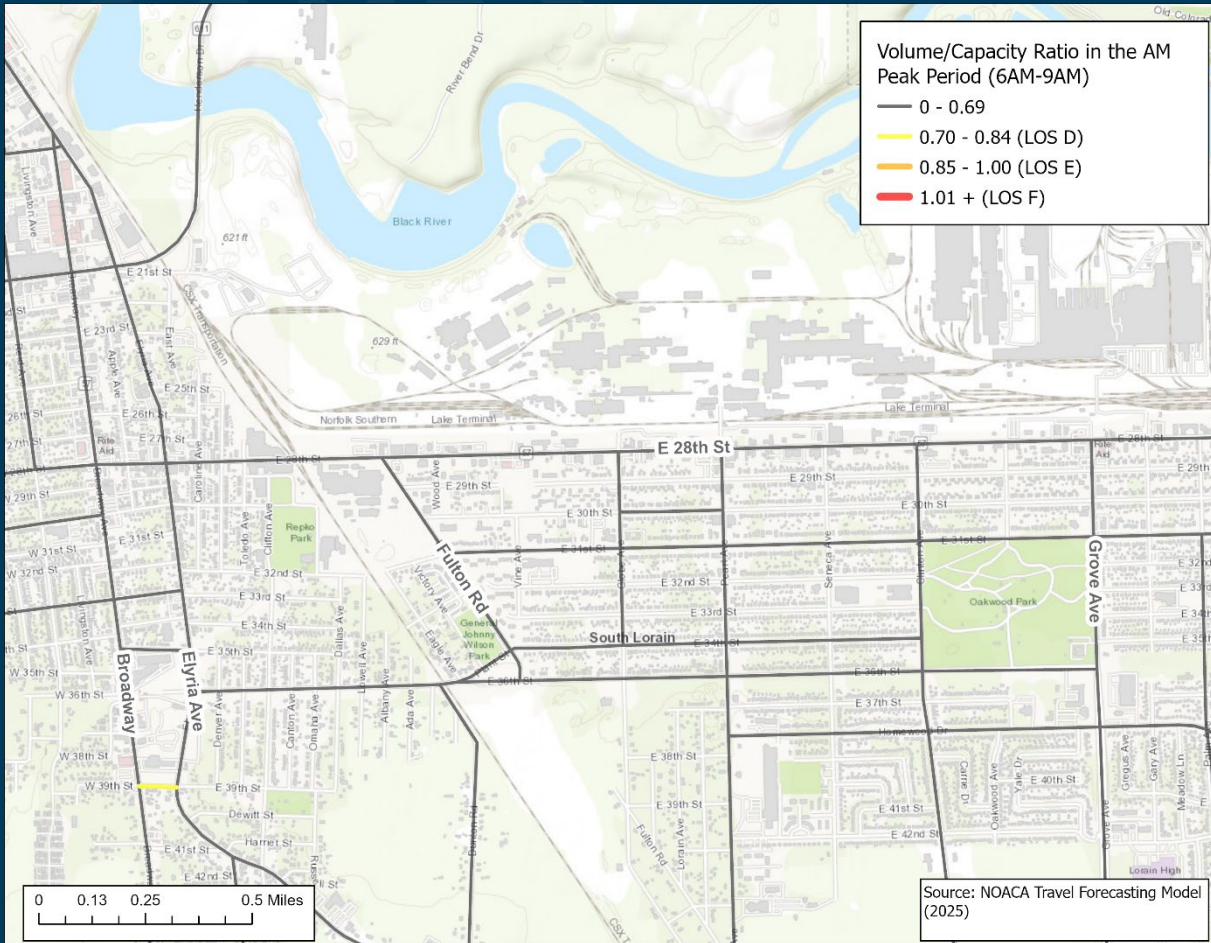
- Lorain Active Transportation Plan
- Lorain County Community Health Assessment
- Southside Gateway Community Plan
- Lorain County Transit



The background is a dark blue gradient with faint, light blue icons of a bicycle, a car, a bus, and a pedestrian scattered across it. The text is centered in white, bold, sans-serif font.

# **PHASE 2 ANALYSIS & ALTERNATIVES DEVELOPMENT**

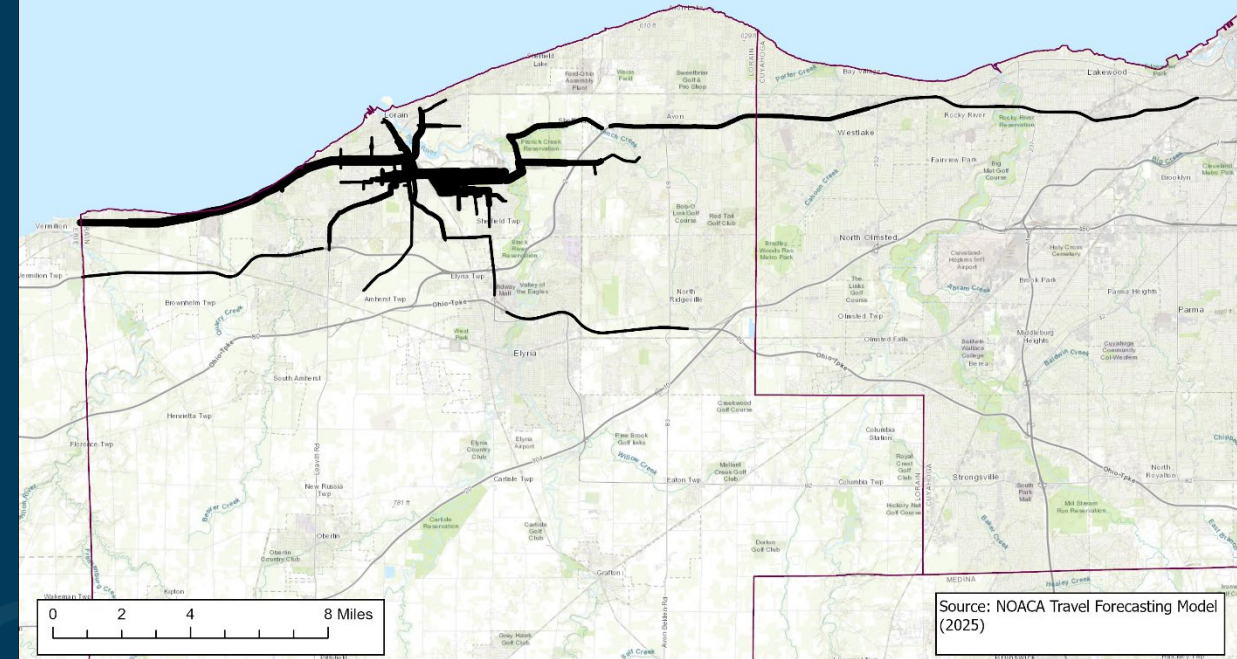
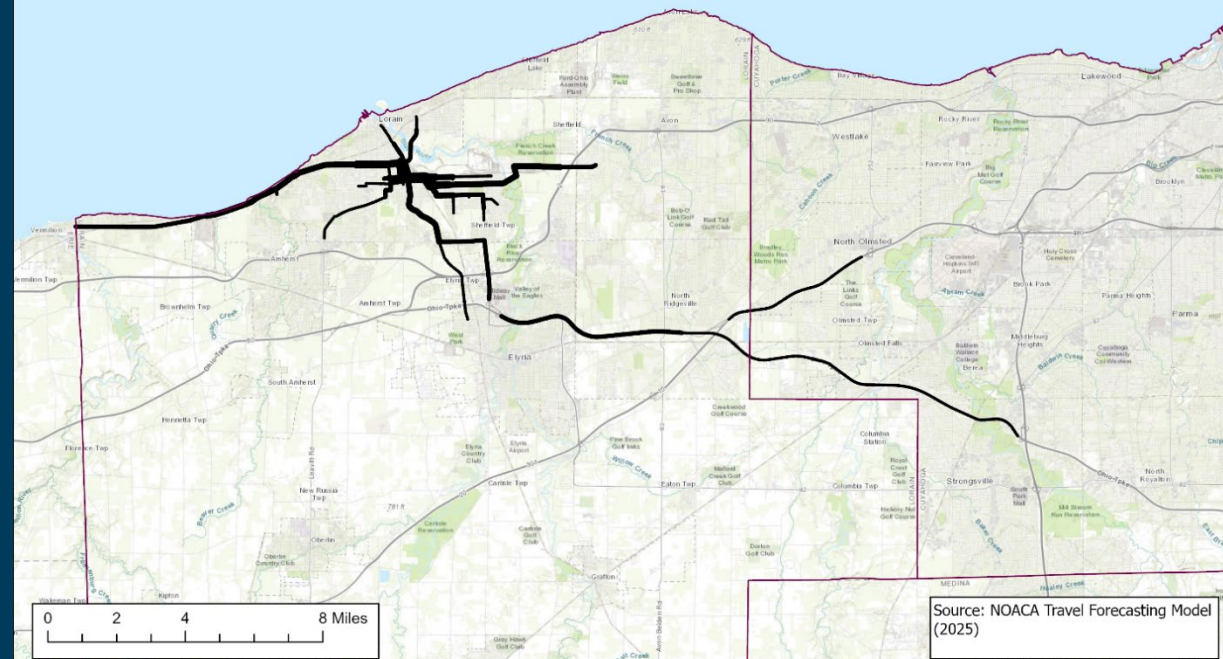
# TRAFFIC CONGESTION



# TRAFFIC THROUGH THE CORRIDOR

Routes to and from E 28th St in the AM Peak Period (6AM-9AM)

Routes to and from E 28th St in the PM Peak Period (3PM-7PM)



Through Traffic: 25% to 30%

# NEXT STEPS

Staff will continue updating the council as the project progresses.





# NOACA

Northeast Ohio Areawide Coordinating Agency

NOACA will **strengthen** regional cohesion, **preserve** existing infrastructure, and **build** a sustainable multimodal transportation system to **support** economic development and **enhance** quality of life in Northeast Ohio.