

NOACA will STRENGTHEN regional cohesion, PRESERVE existing infras and BUILD a sustainable multimodal transportation system to SUPPO economic development and ENHANCE the quality of life in Northeast

# ROADWAY PAVEMENT MAINTENANCE REPORT



## VILLAGE OF SOUTH AMHERST

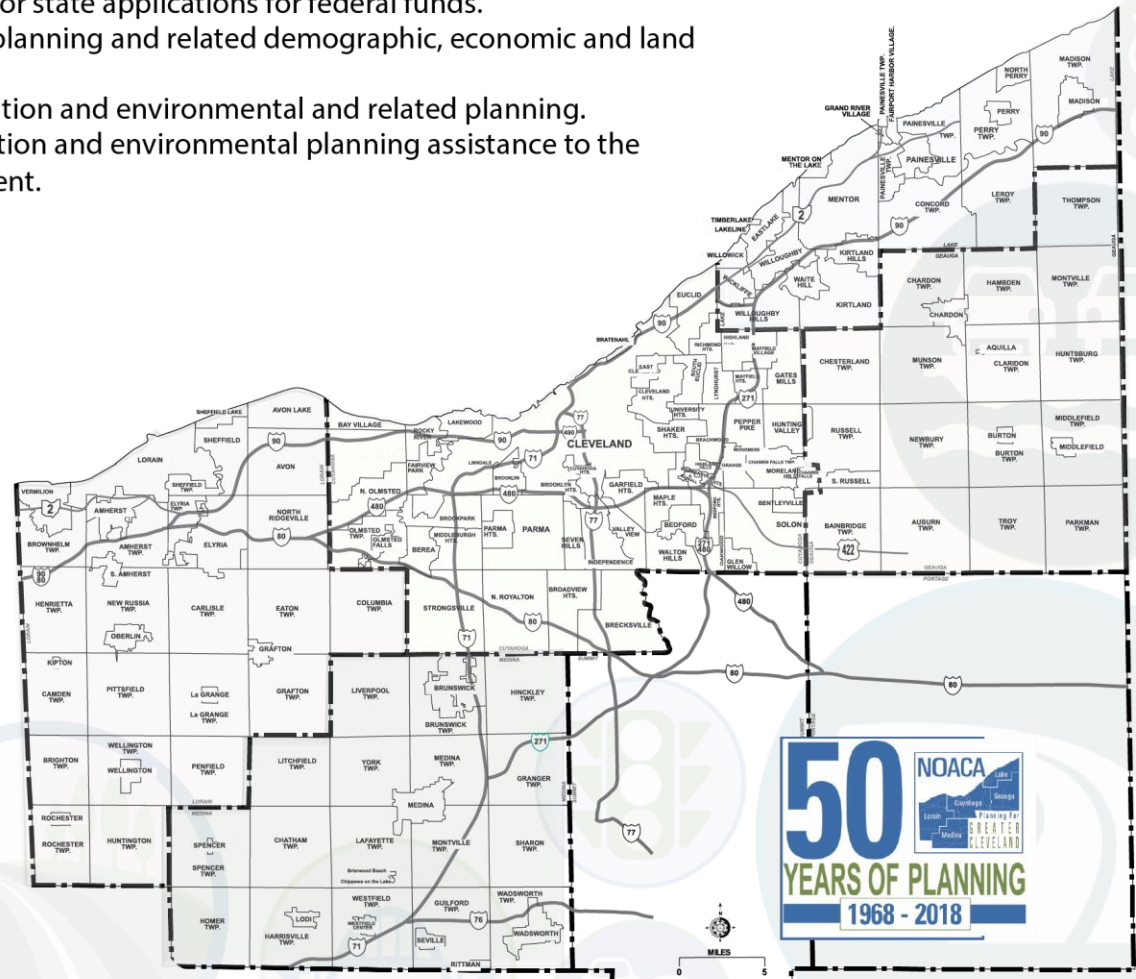


The **Northeast Ohio Areawide Coordinating Agency** (NOACA) is a public organization serving the counties of and municipalities and townships within Cuyahoga, Geauga, Lake, Lorain and Medina (covering an area with 2.1 million people). NOACA is the agency designated or recognized to perform the following functions:

- Serve as the Metropolitan Planning Organization (MPO), with responsibility for comprehensive, cooperative and continuous planning for highways, public transit, and bikeways, as defined in the current transportation law.
- Perform continuous water quality, transportation-related air quality and other environmental planning functions.
- Administer the area clearinghouse function, which includes providing local government with the opportunity to review a wide variety of local or state applications for federal funds.
- Conduct transportation and environmental planning and related demographic, economic and land use research.
- Serve as an information center for transportation and environmental and related planning.
- As directed by the Board, provide transportation and environmental planning assistance to the 172 units of local, general purpose government.

The NOACA Board of Directors is composed of 45 local public officials. The Board convenes quarterly to provide a forum for members to present, discuss and develop solutions to local and areawide issues and make recommendations regarding implementation strategies. As the area clearinghouse for the region, the Board makes comments and recommendations on applications for state and federal grants, with the purpose of enhancing the region's social, physical, environmental and land use/transportation fabric. NOACA invites you to take part in its planning process. Feel free to participate, to ask questions and to learn more about areawide planning.

For more information, call (216) 241-2414 or log on at <http://www.noaca.org>



# 2018 NOACA BOARD OF DIRECTORS

## BOARD OFFICERS

**President:** Armond Budish,  
County Executive, Cuyahoga County

**First Vice President:** Valarie J. McCall,  
Chief of Government & International Affairs, City of  
Cleveland

**Second Vice President:** Timothy C. Lennon,  
Commissioner, Geauga County

**Secretary:** Ted Kalo,  
Commissioner, Lorain County

**Assistant Secretary:** Holly C. Brinda,  
Mayor, City of Elyria

**Assistant Secretary:** Michael P. Summers,  
Mayor, City of Lakewood

**Treasurer:** Daniel P. Troy,  
Commissioner, Lake County

**Assistant Treasurer:** James R. Gills, P.E., P.S.,  
Lake County Engineer

**Assistant Treasurer:** Kirsten Holzheimer Gail,  
Mayor, City of Euclid

**Immediate Past President:** Adam Friedrich,  
Commissioner, Medina County

## BOARD MEMBERS

### CUYAHOGA COUNTY

Samuel J. Alai,  
Mayor, City of Broadview Heights

Annette M. Blackwell,  
Mayor, City of Maple Heights

Pamela Bobst,  
Mayor, City of Rocky River

Michael Dylan Brennan,  
Mayor, City of University Heights

Tanisha R. Briley,  
City Manager, Cleveland Heights

Armond Budish,  
County Executive

Glenn Coyne,  
Executive Director, Planning  
Commission

Timothy J. DeGeeter,  
Mayor, City of Parma

Michael W. Dever, MPA  
Public Works Director

Kirsten Holzheimer Gail,  
Mayor, City of Euclid

Michael D. Gammella,  
Mayor, City of Brook Park

Dale Miller,  
County Councilman

David H. Roche,  
Mayor, City of Richmond Heights

Robert A. Stefanik,  
Mayor, City of North Royalton

Michael P. Summers,  
Mayor, City of Lakewood

### CITY OF CLEVELAND

Anthony Brancatelli,  
City Councilman

Freddy L. Collier, Jr.,  
Director, City Planning Commission

Blaine A. Griffin,  
City Councilman

Frank G. Jackson,  
Mayor, City of Cleveland

Martin J. Keane,  
City Councilman

Valarie J. McCall,  
Chief of Government & International  
Affairs

Matthew L. Spronz, P.E., PMP,  
Capital Projects Director

### GEAUGA COUNTY

Walter "Skip" Claypool,  
County Commissioner

Timothy C. Lennon,  
County Commissioner

Ralph Spidalieri,  
County Commissioner

### LAKE COUNTY

Ben Capelle,  
General Manager, Laketrans

Jerry C. Cirino,  
County Commissioner

James R. Gills, P.E., P.S.,  
County Engineer

John Hamercheck,  
County Commissioner

Daniel P. Troy,  
County Commissioner

### LORAIN COUNTY

Holly C. Brinda, Mayor, City of Elyria

Kenneth P. Carney, Sr., P.E., P.S.,  
County Engineer

Richard Heidecker,  
Trustee, Columbia Township

John D. Hunter,  
Mayor, Village of Sheffield

Ted Kalo,  
County Commissioner

Matt Lundy,  
County Commissioner

Chase M. Ritenauer,  
Mayor, City of Lorain

### MEDINA COUNTY

Jeff Brandon,  
Trustee, Montville Township

Andrew H. Conrad, P.E., P.S.,  
County Engineer

Adam Friedrich,  
County Commissioner

Patrick Patton,  
City Engineer, City of Medina

### REGIONAL AND STATE

Greater Cleveland Regional  
Transit Authority (GCRTA)  
Joseph A. Calabrese,  
CEO and General Manager

Northeast Ohio Regional Sewer  
District (NEORSDD)  
Kyle Dreyfuss-Wells, Chief Executive Officer

Cleveland-Cuyahoga County Port Authority  
William D. Friedman, President/CEO

Ohio Department of Transportation (ODOT)  
Myron S. Pakush, Deputy Director, District 12

### Ex Officio Member:

Kurt Princic, Chief, Northeast District Office,  
Ohio Environmental Protection Agency (OEPA)

## NOACA DIRECTORS

Grace Gallucci,  
Executive Director

Billie Geyer,  
Comptroller

Marvin Hayes,  
Director of Communications & Public Affairs

Randy Lane,  
Director of Programming

Susanna Merlone, EMBA,  
Director of Administrative Services

Kathy Sarli,  
Director of Planning

Jonathan Giblin,  
Associate Director of Compliance

**TABLE OF CONTENTS**

---

1. Executive Summary .....2

2. Background .....3

3. PART I: 2016 Pavement Condition .....8

4. PART II: 2018 Current Backlog .....12

5. PART III: Maintenance & Rehabilitation (M&R) Program.....13

6. PART IV: Comparative Analysis .....15

7. Appendix.....19

**MAPS**

---

1: Village of South Amherst Location in the NOACA Region .....4

2: 2016 Village of South Amherst Pavement Condition .....10

**FIGURES**

---

1: 2016 South Amherst Pavement Network Condition Chart by Lane-Miles .....9

2: The PCR Acceptable Level and “Need Year” Relation .....13

3: Average PCR Comparison by the Constraint Scenarios and by Year .....17

**TABLES**

---

1: Selected Pavement Treatments and Their Planning Level Costs .....6

2: 2016 South Amherst Pavement Network Condition .....8

3: 2016 Village of South Amherst Pavement Condition Listing.....11

4: Performance Comparison of the Constraint Scenarios.....16

**APPENDIX**

---

The “2018 Current Backlog” Pavement Treatment List .....19

The “Maintain 15% Deficiency” Pavement Treatment List.....20

The “Maintain an Average Network PCR of 80” Pavement Treatment List .....21

The “M&R” Pavement Treatment List .....22

The “Maintain Lowest Standard PCR” Pavement Treatment List .....23

## EXECUTIVE SUMMARY

---

The 2016 Ohio Department of Transportation (ODOT) pavement database has 3,626 segment records for the Northeast Ohio Areawide Coordinating Agency (NOACA) region. The NOACA region has a total of 3,330 centerline miles of roadways including freeways and federal-aid highways which is equivalent to 8,561 lane-miles. The regional segment average Pavement Condition Ratings (PCR) is about 77.

In the Village of South Amherst there are 3.14 centerline miles of federal-aid roads, which are equivalent to 6.28 lane-miles within the village boundary that include State Route 113 (SR 113). The 2016 ODOT pavement database has five segment records for the Village of South Amherst roadway system. Each record comprises of several fields of various information and measures such as Street name, Length (miles), Lane-miles length, Number of Lanes, Function Class, Pavement Condition Ratings (PCR), etc.

According to the PCR measure, approximately 37 percent of the pavement lane-miles are currently in the “Good” to “Very Good” condition. Most of the lane-miles are in “Fair” condition (almost 47 percent). About 16 percent of the lane-miles are in the “Fair to Poor” status and demand some kind of immediate preventive maintenance and /or rehabilitation treatments.

This pavement study includes four parts:

- Part I: The 2016 pavement network condition,
- Part II: The 2018 backlog,
- Part III: The Maintenance and Rehabilitation (M&R) program,
- Part IV: The Comparative analysis.

Considering the five-year study period of 2018 - 2022, this pavement study focuses on the required preventive maintenance treatments and some rehabilitation techniques rather than reconstruction.

Part I of this study analyzes the 2016 pavement network condition and tabulates the important information of all the five road segments in the Village of South Amherst.

In Part II, the backlog is defined as the cost of pavement rehabilitation of all roads within one year (2018) and bringing the average network PCR to 80. Backlog is a “snapshot” or relative measure of outstanding rehabilitation work.

Part III introduces the optimal preventive maintenance and rehabilitation strategy for each segment and its recommended implementation year based on the NOACA maintenance decision tree.

Finally, Part IV compares the backlog and the “M&R” program with the NOACA transportation asset management strategies. All these strategies were compared regarding their costs, the average network PCR and percent of the lane-miles below the acceptable level.

## BACKGROUND

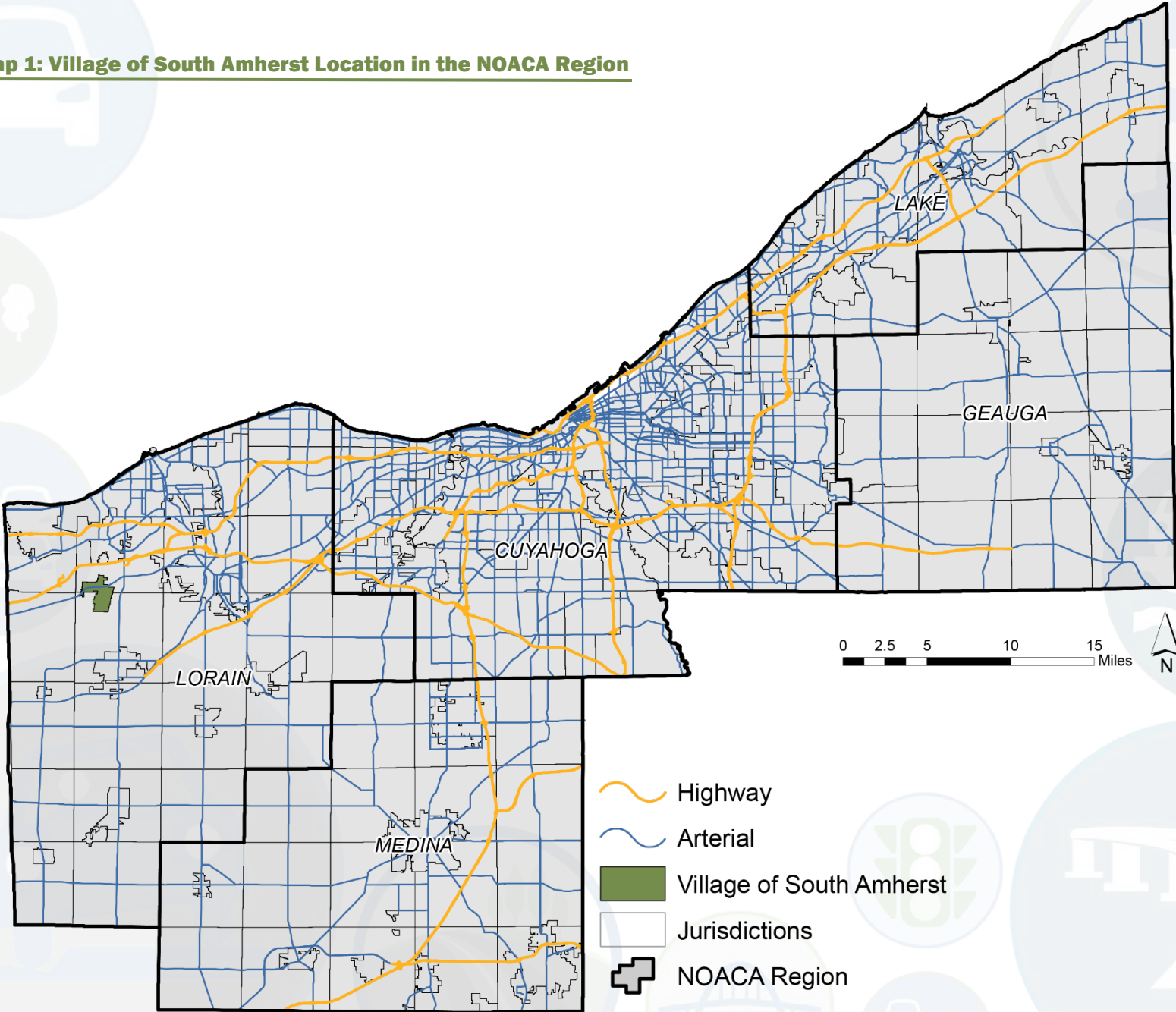
---

The Village of South Amherst is located in Lorain County. During the War of 1812, a road was put in between Ridgeville and Florence, later to be named South Ridge Road (State Route 113). In 1814, the first settlers, Reuben Webb and his family, arrived and they settled along South Ridge Road at what is now the corner of Quarry Road. In 1824, Lorain County was created from parts of Huron, Cuyahoga, and Medina counties. The Village of South Amherst was incorporated in 1918.

As of the Northeast Ohio Areawide Coordinating Agency (NOACA) 2015 estimates, the village had a population of 1,704 and employment of 144. The Village of South Amherst highway includes State Route 113 (SR 113). Cleveland-Hopkins International Airport is the nearest airport.

Map 1 illustrates the Village of South Amherst location in the NOACA region.

**Map 1: Village of South Amherst Location in the NOACA Region**



For the purpose of this study:

**Pavement Reconstruction** is defined as the replacement or reestablishment of the original pavement structural capacity by the placement of the equivalent or increased pavement structure. Reconstruction may utilize either new or recycle materials for the reconstruction of the complete pavement structure.

**Pavement Rehabilitation** is defined as resurfacing, restoration, and rehabilitation (3R) work consisting of structural enhancements that extend the service life of an existing pavement and/or improve its structural capacity. Rehabilitation techniques include restoration treatments and/or structural overlays. This may include partial recycling of the existing pavement, placement of additional surface materials, and/or other work necessary to return an existing pavement to a condition of structural or functional adequacy.

**Preventive Maintenance** is considered as cost effective treatments to an existing roadway system and its appurtenances that preserves the system, delays future deterioration, and maintains or improves the functionality condition of the system without increasing structural capacity. Projects that address deficiencies in the pavement structure or increase the structural capacity of the facility are not considered preventive maintenance.

Maintaining the roadways in a state of good repair is essential and experience has shown that, over time it is less expensive to invest in preventive maintenance and/or rehabilitation in an ongoing basis rather than in reconstruction of pavement that has deteriorated to a poor condition.

This pavement study analyzes the current status of the South Amherst pavement network condition and considers the five-year study period of 2018-2022. It mainly focuses on the required roadway pavement preventive maintenance treatments and some rehabilitation techniques rather than reconstruction. The 2016 Ohio Department of Transportation (ODOT) pavement database was used as the input data and RoadMatrix software was utilized as the NOACA Pavement Management platform.

Seven roadway pavement preventive maintenance and rehabilitation treatments were considered in the South Amherst pavement network analysis for the study period and Table 1 illustrates the selected treatment and their associated planning level costs.

**Table 1: Selected Pavement Treatments and Their Planning Level Costs**

Maintenance Treatment Type	Cost per SQ FT (2016\$)	Estimated Cost per 12-FT lane-Mile (2016\$)
Crack Fill	0.08	5,100
Joint Repair	0.24	15,200
Crack Fill and Slurry	0.4	25,300
Preventive Maintenance Minor	0.5	31,700
Micro – Pave Type    Surface Treatment	0.722	45,700
Selective Patch, Mill and 1.5” O/L	1.5	95,000
2.0 inch Hot Mix Mill and Overlay	1.9	120,400

**Pavement Maintenance Treatment Definitions**

**Crack Fill:** it is the placement of asphalt emulsion into non-working cracks to reduce water infiltration and to reinforce the adjacent pavement.

**Slurry Seal:** a mixture of fine aggregate, asphalt emulsion, water, and mineral filler, used when the primary problem is excessive oxidation and hardening of the existing surface. Slurry seals are used to retard surface raveling, and improve surface friction.

**Joint Repair:** used to remove deteriorated concrete pavement long joint/crack repairs. It minimizes infiltration of surface water and incompressible material into the joint system.

**Preventive Maintenance (Minor):** typically applied to pavements in good condition having significant remaining service life. Examples of minor preventive treatments include asphalt crack sealing, chip sealing, slurry or micro-surfacing, thin and ultra-thin hot-mix asphalt overlay, and concrete joint sealing.

**Micro – Pave (Type II Surface Treatment):** consist of the application of a mixture of water, asphalt emulsion, aggregate (very small crushed rock), and chemical additives. It is used to treat surfacing and rut filling on roads that get moderate to heavy levels of traffic.

**2.0in Hot Mix Mill & Overlay:** applied as a maintenance treatment. Thin overlays should only be placed on structurally sound pavements. That is because they offer little structural improvement, but they can renew the surface in terms of functional performance (i.e., ride quality).

**Selective Patching, Mill & 1.5 O/L:** it is primarily done to extend the life of a roadway. Patch mill and overlay projects are designed to remove damaged portions of the roadway and replace it with new smooth pavement.

This report includes the following four parts:

- I. The 2016 status of the South Amherst pavement network condition,
- II. The 2018 “backlog” treatment list,
- III. The optimal preventive maintenance and rehabilitation strategies, and
- IV. The comparative analysis.

**PART I: 2016 PAVEMENT CONDITION**

In order to provide an accurate assessment of the current status and further pavement analyses, the pavement network is required to be divided into homogeneous discrete sections in terms of surface distress, traffic volumes, pavement structure, etc. The 2016 ODOT pavement database has five segment records for the Village of South Amherst roadway system. Each record comprises of several fields of various information and measures such as Street name, Length (miles), Lane-miles length, Number of Lanes, Function Class, Pavement Condition Ratings (PCR), etc.

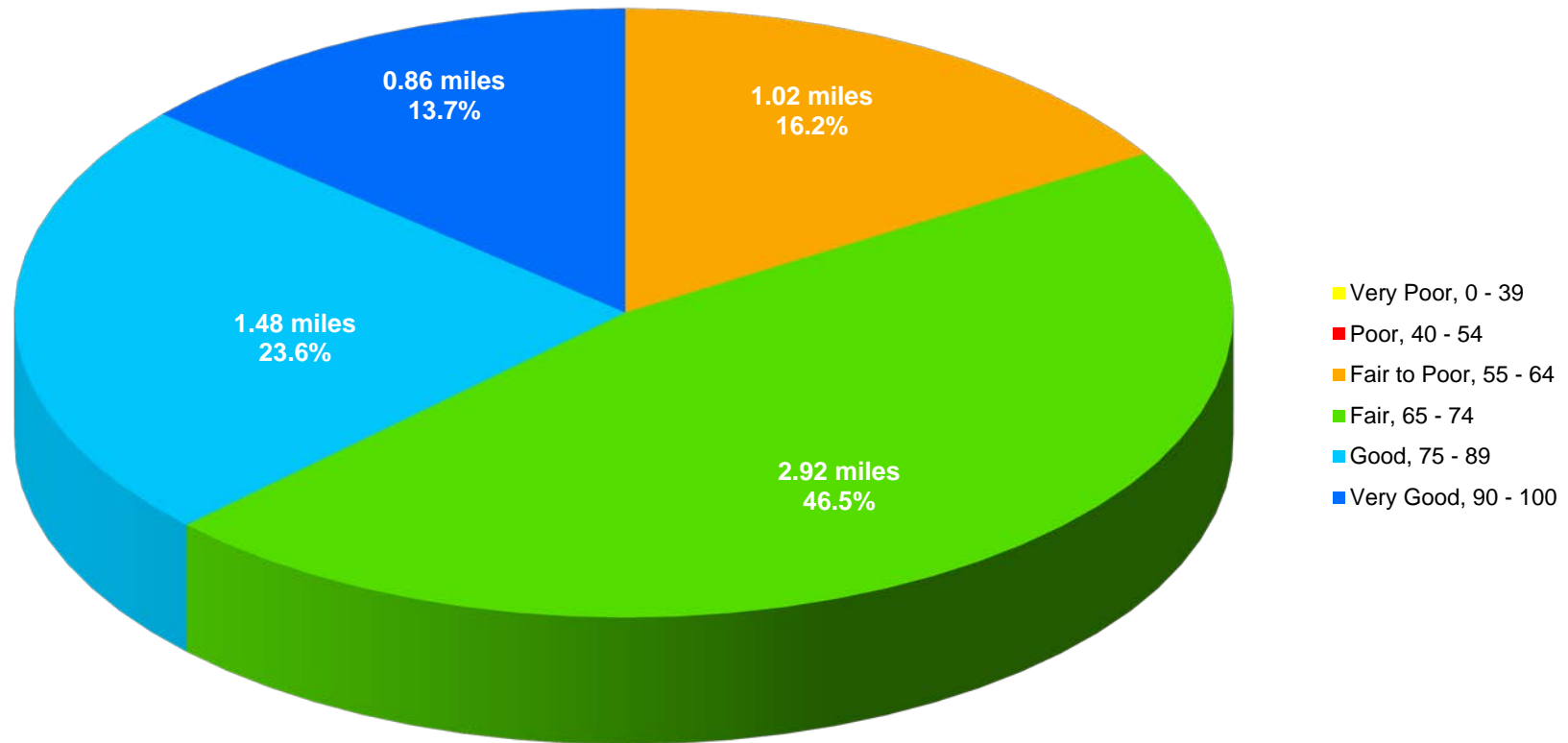
Based on the utilized ODOT database, there are 3.14 centerline miles of federal-aid eligible roads which are equivalent to 6.28 lane-miles in the Village of South Amherst. The total area of roadway is 508,358 Sq. Ft.

The PCR measure is a qualitative description of the structural state of the pavement. The PCR values span a spectrum of descriptive narrative ranging from “Very Good” to “Very Poor”. Each roadway segment is scored from 0 to 100 with 0 representing completely distressed pavement and 100 indicating perfect pavement condition. The lane-mile weighted average of the Village of South Amherst segment PCRs is about 71. Table 2 and Figure 1 summarize the 2016 South Amherst pavement network conditions by percentages of roadway lane-miles length.

**Table 2: 2016 Village of South Amherst Pavement Network Condition**

Pavement Condition	PCR Range	Lane-Miles	Percent of Lane-Miles
Very Poor	0 - 39	0	0%
Poor	40 - 54	0	0%
Fair to Poor	55 - 64	1.02	16.2%
Fair	65 - 74	2.92	46.5%
Good	75 - 89	1.48	23.6%
Very Good	90 - 100	0.86	13.7%

**Figure 1: 2016 Village of South Amherst Pavement Network Condition Chart by Lane-Miles**

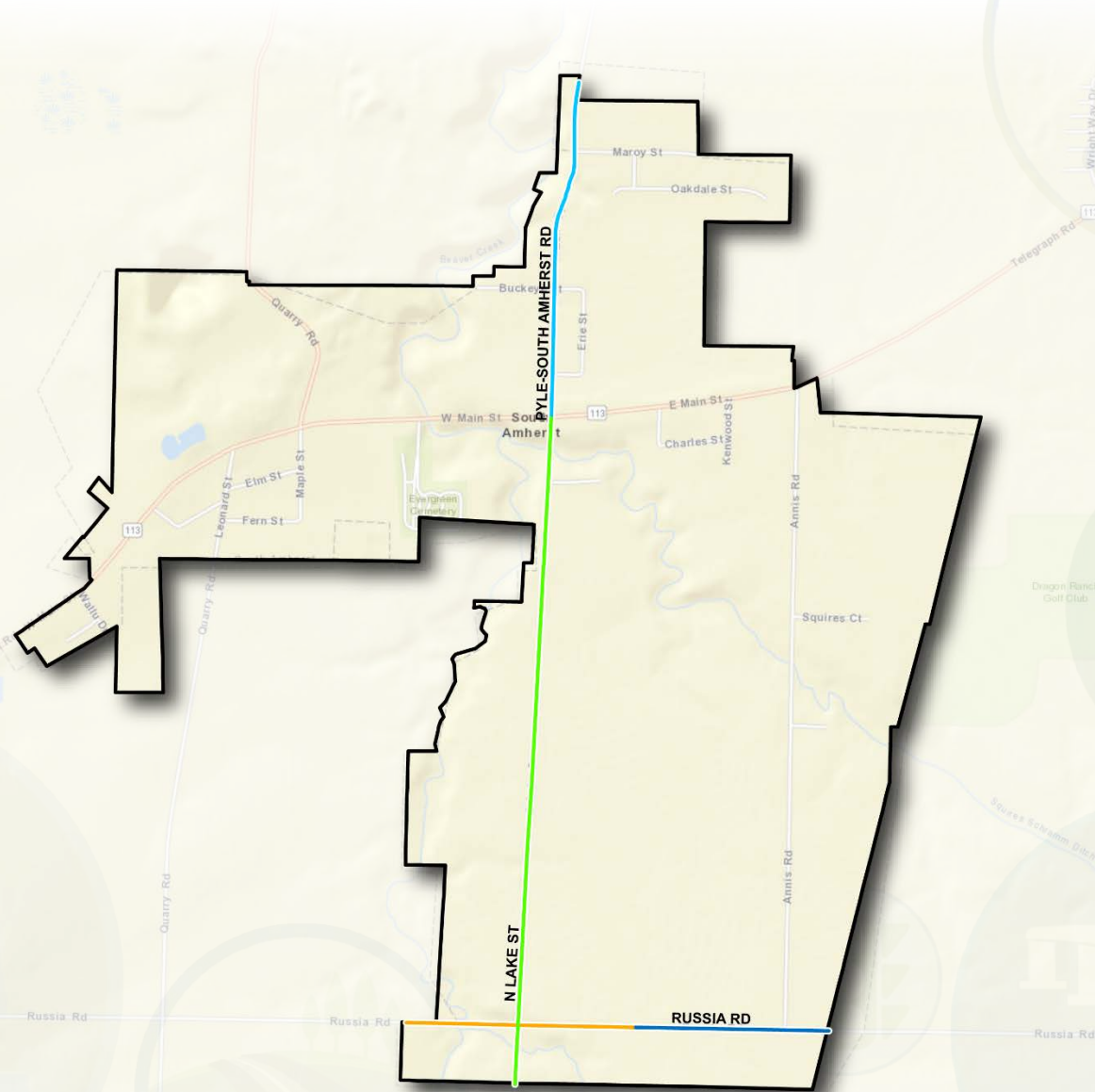
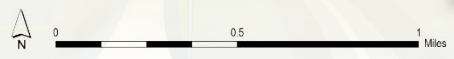


As indicated, approximately 37 percent of the pavement lane-miles are currently in the “Good” to “Very Good” condition and the lane-mile weighted average PCR represents a “Fair” condition. Most of the lane-miles are in “Fair” condition (almost 47 percent). About 16 percent of the lane-miles are in the “Fair to Poor” status and demand some kind of immediate preventive maintenance and /or rehabilitation treatments.

Map 2 illustrates the 2016 South Amherst roadway pavement condition for each segment record and Table 3 tabulates the 2016 South Amherst pavement condition listing.

**Map 2: 2016 Village of South Amherst Pavement Condition**

Pavement Condition Rating	
<span style="color: yellow;">—</span>	Very Poor, 0 - 39
<span style="color: red;">—</span>	Poor, 40 - 54
<span style="color: orange;">—</span>	Fair to Poor, 55 - 64
<span style="color: green;">—</span>	Fair, 65 - 74
<span style="color: cyan;">—</span>	Good, 75 - 89
<span style="color: blue;">—</span>	Very Good, 90 - 100
<span style="border: 1px solid black; display: inline-block; width: 10px; height: 10px;"></span>	Municipal Boundary



**Table 3: 2016 Village of South Amherst Pavement Condition Listing**

ROAD NAME	FROM	TO	FUNCTION CLASS	LANE-MILES	PCR
N LAKE ST	SOUTH AMHERST SCL	SR 113	MAJOR COLLECTOR	2.92	65
PYLE-SOUTH AMHERST RD	SR 113	BUCKEYE ST	MINOR ARTERIAL	0.74	76
PYLE-SOUTH AMHERST RD	BUCKEYE ST	SOUTH AMHERST NCL	MINOR ARTERIAL	0.74	76
RUSSIA RD	SOUTH AMHERST WCL	0.26 MILES E OF S LAKE ST	MINOR ARTERIAL	1.02	62
RUSSIA RD	0.26 MILES E OF S LAKE ST	SOUTH AMHERST ECL	MINOR ARTERIAL	0.86	97

## PART II: 2018 CURRENT BACKLOG

---

The backlog is defined as the cost of pavement rehabilitation of all roads within the current year (2018) and bringing the average network PCR to 80. Backlog is a “snapshot” or relative measure of outstanding rehabilitation work. The backlog not only represents how far behind the pavement network is in terms of its present physical condition, but also its cost value serves as a benchmark to measure the impact of various funding strategies. Additionally, the current backlog offers a basis for comparison to future and/or past year’s backlogs.

The backlog strategy does not utilize any pavement preventive maintenance treatments, but instead considers rehabilitation or reconstruction treatments. This strategy achieves the average network PCR 80, and also maintains all the pavement conditions above the minimum acceptable level. In this study, the minimum acceptable PCR for the arterial roadway function class is 55 and for the major and minor collector is 50.

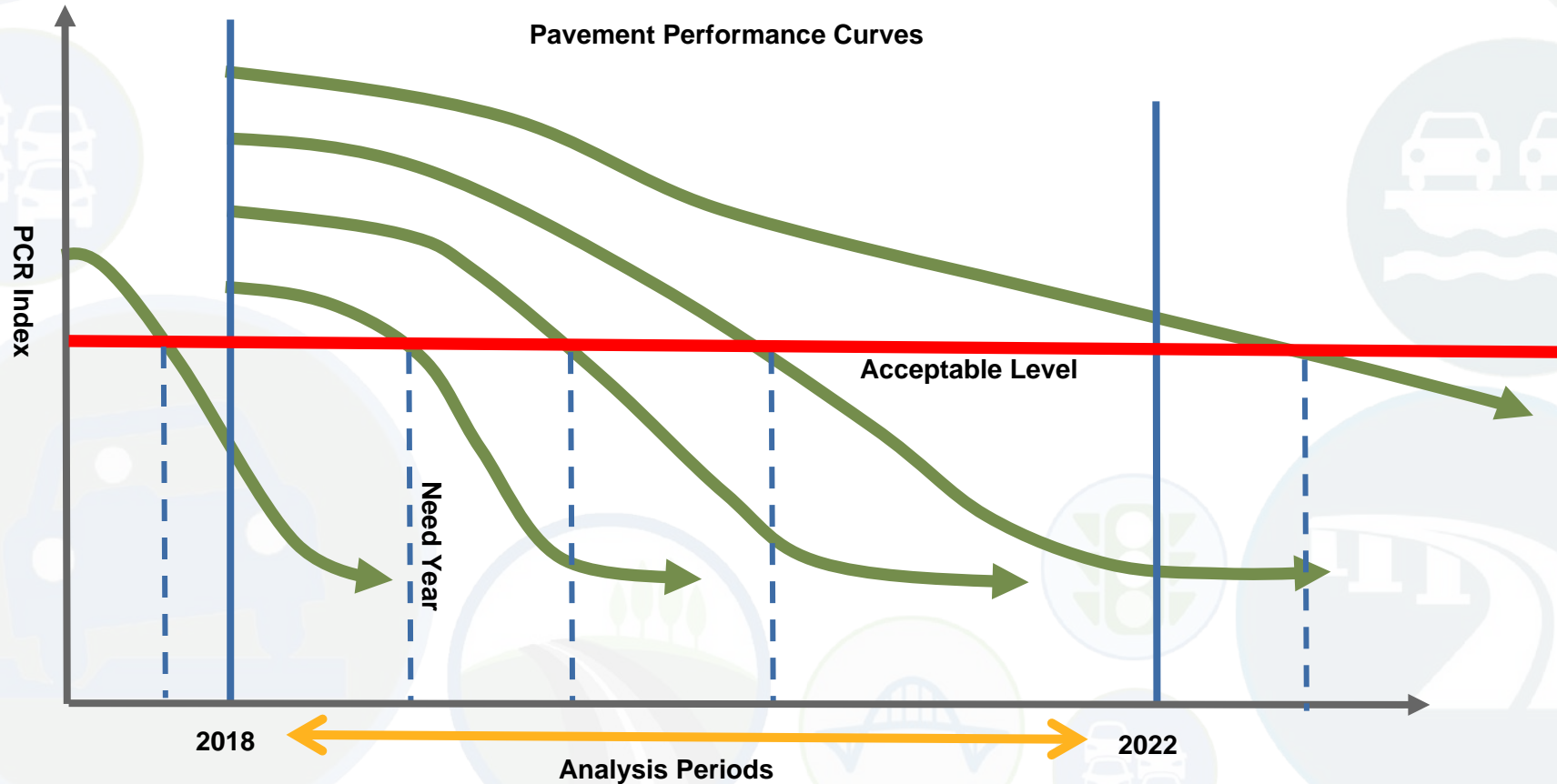
The Appendix includes all the backlog pavement treatments. As illustrated, the 2018 backlog treatment list includes segments which their 2018 PCRs are below the minimum acceptable level and are recommended with various reconstruction treatments. There are two segments in the 2018 backlog list with the total of 3.94 lane-miles. The 2018 backlog cost of the recommended treatments is over one million dollars.

**PART III: MAINTENANCE & REHABILITATION (M&R) PROGRAM**

In order to estimate the preventive maintenance and rehabilitation requirements of a pavement network over a period of time, the first step is to determine the “Need Year” or when a pavement segment requires rehabilitation. The “Need Year” of a pavement is defined as the year in which the pavement condition falls below a critical level. Pavement condition of a road segment deteriorates under traffic, climate, etc. and consequently its PCR value is reduced. Without any treatments and depending on the deteriorating factors, pavements perform differently and Figure 2 depicts the typical acceptable level and “Need Year” relation for several road segments. As shown, the definition of the acceptable level is a critical factor in determining the “Need Year” for any road segment.

In this study, the critical level is set by the minimum acceptable PCR. As mentioned earlier, In the NOACA region, the minimum acceptable PCR for the arterial roadway function class is 55 and for the major and minor collector is 50.

**Figure 2: The PCR Acceptable Level and “Need Year” Relation**





## PART IV: COMPARATIVE ANALYSIS

---

The current NOACA transportation asset management policy includes two strategies

- Maintain 15% Deficiency: this strategy attempts to maintain the total lane-miles with PCR below the acceptable level no more than 15%.
- Maintain an Average Network PCR of 80: applies a set of maintenance treatments in order to keep the roadway network average PCR more than, or equal to 80 over the study period.

This section compares the discussed backlog and the “M&R” program treatments with the NOACA transportation asset management strategies.

In addition to the above strategies, this comparative analysis considers another scenario as the minimum benchmark. The “Maintain Lowest Standard PCR” treatment strategy is based on the minimum PCR thresholds of 55 for arterials and 50 for collectors and a set of annual budget constraints. The annual budget constraints are calculated in three steps: First, the segments with the “M&R” recommended implementation in each specific analysis year are selected. Second, a subset of the selected segments which their “Need Years” are in the analysis period are identified. It should be noted that the selected segments with the “Need Year” beyond the analysis period are excluded from the budget constraint calculation. Third, the “M&R” treatment costs for the identified segments in the second step, are added together to provide an annual budget constraint for this scenario.

As discussed, all the above scenarios apply a decision tree approach to determine technically feasible maintenance and rehabilitation strategies for each segment requiring rehabilitation during the five-year period.

Table 4 summarizes the comparison results of all the above scenarios over the five-year period for the Village of South Amherst. In this table, the “5-Year Total Required Dollars” column shows the accumulation of the annual costs over five years calculated based on inflation-adjusted dollars for each strategy. Also, the Network average PCR is the lane-mile weighted average.

**Table 4: Performance Comparison of the Constraint Scenarios**

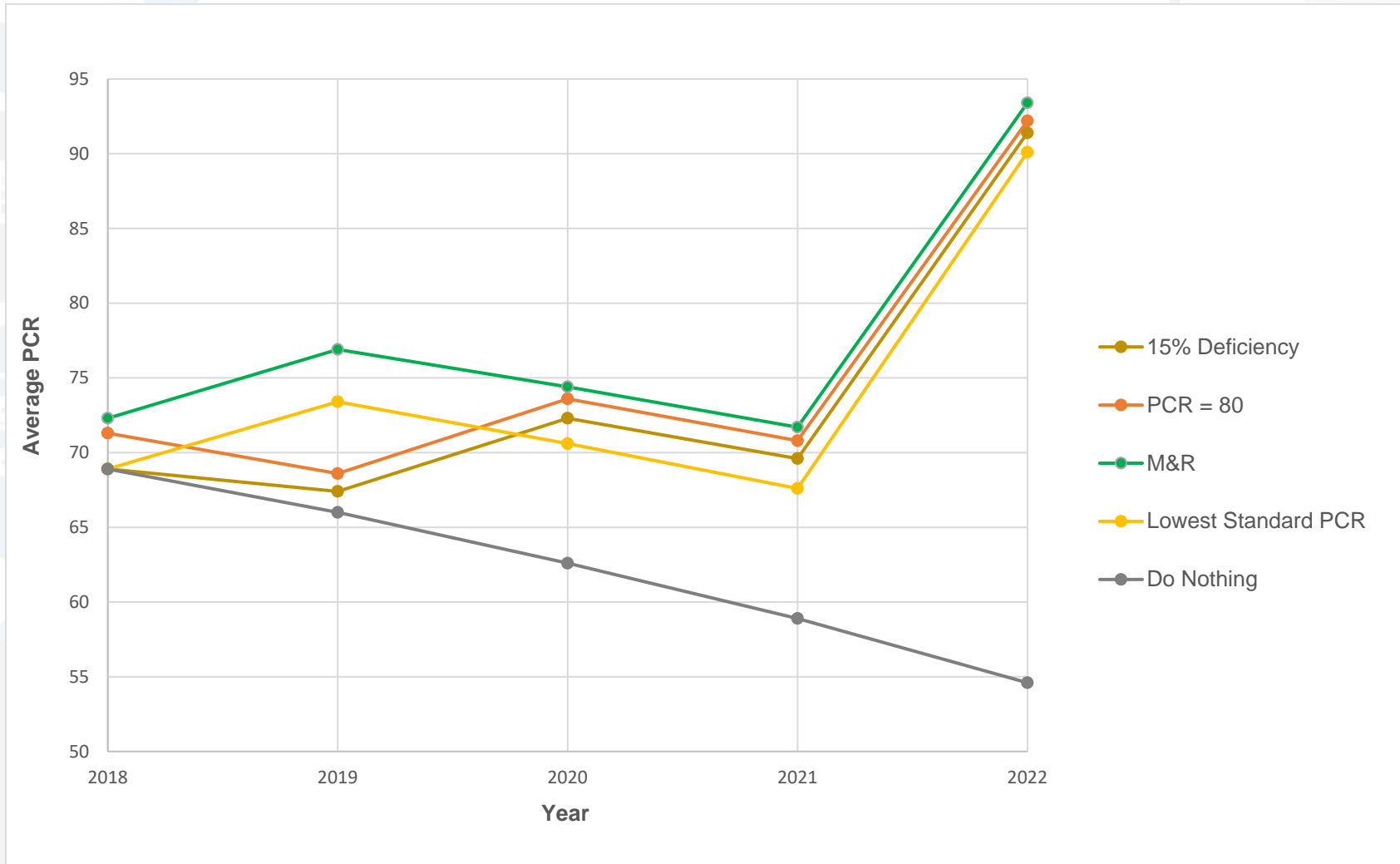
Maintenance Strategy	Strategy Group	5-Year Total Required Dollars	Network Average PCR	Network PCR at the End of the 5-Year Period	Percent of Pavement below the Minimum PCR
2018 Current Backlog	2018 Backlog	1,221,518	93.1	-	0%
Maintain 15% Deficiency	NOACA Transportation Asset Management Targets	634,307	74.8	92.9	0%
Maintain an Average Network PCR of 80		632,781	75.5	93.2	0%
M&R Program	Scenarios	636,466	76.9	93.4	0%
Maintain Lowest Standard PCR		574,914	74.1	90.1	0%

Note: The backlog required budget is for the year of 2018 only.

The Appendix lists all the treatments with their implementation years in the period of 2018 to 2022 for the above maintenance strategies.

Figure 3 illustrates the annual network average PCR for the discussed maintenance and rehabilitation strategies. It should be noted that the backlog scenario has only one value of 93.1 for 2018.

**Figure 3: Average PCR Comparison by the Constraint Scenarios and by Year**



As expected, the treatments of the “M&R” program maintain the pavement network condition with the highest network average PCR. This strategy requires a budget of over six hundred thousand dollars during the analysis period.

The “Maintain an Average Network PCR of 80” and the “Maintain 15% deficiency” scenarios provide almost the same level of condition with the same budget requirement. The “Maintain Lowest Standard PCR” scenario maintains the network pavement conditions at a slightly lower level with about \$60,000 less cost. The average network PCR at the end of five-year period for all the scenarios is at the “Very Good” condition.

It should be noted that the backlog cost as the benchmark is twice more than the “M&R” program cost and both strategies have a similar network average PCR at the end of five-year period. This comparison indicates that the annual maintenance investment provides a better pavement management policy with much smaller budget than the reconstruction treatments with high costs.

APPENDIX

2018 Current Backlog

**Pavement Treatment List**

ROAD NAME	FROM	TO	RECOMMENDATION TREATMENT	LANE-MILES	TREATMENT COST
N LAKE ST	SOUTH AMHERST SCL (SOUTH OF RUSSIA RD)	SR 113 (TELEGRAPH RD)	2.0IN. HOT MIX MILL & OVERLAY	2.92	522,995
RUSSIA RD	SOUTH AMHERST WCL	0.26 MILES EAST OF S LAKE ST	MINOR REHAB WITH REPAIRS (AC)	1.02	698,523
<b>REQUIRED BACKLOG BUDGET (2018\$)</b>					<b>\$1,221,518</b>

**Maintain 15% Deficiency**

**Pavement Treatment List**

ROAD NAME	FROM	TO	RECOMMENDED TREATMENT	LANE-MILES	IMPLEMENTATION	
					COST (2019\$)	YEAR
PYLE-SOUTH AMHERST RD	SR 113 (TELEGRAPH RD)	BUCKEYE ST	PREVENTATIVE MAINTENANCE MINOR	0.74	31,539	2019
PYLE-SOUTH AMHERST RD	BUCKEYE ST	SOUTH AMHERST NCL	PREVENTATIVE MAINTENANCE MINOR	0.74	31,539	2019
<b>THE 2019 REQUIRED BUDGET FOR THE "MAINTAIN 15% DEFICIENCY" STRATEGY</b>					<b>\$63,078</b>	
ROAD NAME	FROM	TO	RECOMMENDED TREATMENT	LANE-MILES	IMPLEMENTATION	
					COST (2020\$)	YEAR
RUSSIA RD	SOUTH AMHERST WCL	0.26 MILES EAST OF S LAKE ST	SELECTIVE PATCH, MILL & 1.5" O/L	1.02	115,831	2020
<b>THE 2020 REQUIRED BUDGET FOR THE "MAINTAIN 15% DEFICIENCY" STRATEGY</b>					<b>\$115,831</b>	
ROAD NAME	FROM	TO	RECOMMENDED TREATMENT	LANE-MILES	IMPLEMENTATION	
					COST (2022\$)	YEAR
N LAKE ST	SOUTH AMHERST SCL (SOUTH OF RUSSIA RD)	SR 113 (TELEGRAPH RD)	SELECTIVE PATCH, MILL & 1.5" O/L	2.92	455,398	2022
<b>THE 2022 REQUIRED BUDGET FOR THE "MAINTAIN 15% DEFICIENCY" STRATEGY</b>					<b>\$455,398</b>	

**Note: The "Maintain 15% Deficiency" strategy does not have any pavement maintenance treatments with the recommended implementation years of 2018 and 2021.**

**Maintain an Average Network PCR of 80**

**Pavement Treatment List**

ROAD NAME	FROM	TO	RECOMMENDED TREATMENT	LANE-MILES	IMPLEMENTATION	
					COST (2018\$)	YEAR
PYLE-SOUTH AMHERST RD	SR 113 (TELEGRAPH RD)	BUCKEYE ST	PREVENTATIVE MAINTENANCE MINOR	0.74	30,776	2018
PYLE-SOUTH AMHERST RD	BUCKEYE ST	SOUTH AMHERST NCL	PREVENTATIVE MAINTENANCE MINOR	0.74	30,776	2018
<b>THE 2018 REQUIRED BUDGET FOR THE “MAINTAIN AN AVERAGE NETWORK PCR OF 80” STRATEGY</b>					<b>\$61,552</b>	
ROAD NAME	FROM	TO	RECOMMENDED TREATMENT	LANE-MILES	IMPLEMENTATION	
					COST (2020\$)	YEAR
RUSSIA RD	SOUTH AMHERST WCL	0.26 MILES EAST OF S LAKE ST	SELECTIVE PATCH, MILL & 1.5" O/L	1.02	115,831	2020
<b>THE 2020 REQUIRED BUDGET FOR THE “MAINTAIN AN AVERAGE NETWORK PCR OF 80” STRATEGY</b>					<b>\$115,831</b>	
ROAD NAME	FROM	TO	RECOMMENDED TREATMENT	LANE-MILES	IMPLEMENTATION	
					COST (2022\$)	YEAR
N LAKE ST	SOUTH AMHERST SCL (SOUTH OF RUSSIA RD)	SR-113 (TELEGRAPH RD)	SELECTIVE PATCH, MILL & 1.5" O/L	2.92	455,398	2022
<b>THE 2022 REQUIRED BUDGET FOR THE “MAINTAIN AN AVERAGE NETWORK PCR OF 80” STRATEGY</b>					<b>\$455,398</b>	

**Note: The “Maintain an Average Network PCR of 80” strategy does not have any pavement maintenance treatments with the recommended implementation years of 2019, and 2021.**

**M&R Program**

**Pavement Treatment List**

ROAD NAME	FROM	TO	RECOMMENDED TREATMENT	LANE-MILES	IMPLEMENTATION	
					COST (2018\$)	YEAR
PYLE-SOUTH AMHERST RD	SR 113 (TELEGRAPH RD)	BUCKEYE ST	PREVENTATIVE MAINTENANCE MINOR	0.74	30,776	2018
PYLE-SOUTH AMHERST RD	BUCKEYE ST	SOUTH AMHERST NCL	PREVENTATIVE MAINTENANCE MINOR	0.74	30,776	2018
<b>THE 2018 REQUIRED BUDGET FOR THE "M&amp;R" PROGRAM</b>					<b>\$61,552</b>	
ROAD NAME	FROM	TO	RECOMMENDED TREATMENT	LANE-MILES	IMPLEMENTATION	
					COST (2019\$)	YEAR
RUSSIA RD	SOUTH AMHERST WCL	0.26 MILES EAST OF S LAKE ST	SELECTIVE PATCH, MILL & 1.5" O/L	1.02	113,028	2019
<b>THE 2019 REQUIRED BUDGET FOR THE "M&amp;R" PROGRAM</b>					<b>\$113,028</b>	
ROAD NAME	FROM	TO	RECOMMENDED TREATMENT	LANE-MILES	IMPLEMENTATION	
					COST (2022\$)	YEAR
RUSSIA RD	SOUTH AMHERST WCL	0.26 MILES EAST OF S LAKE ST	CRACK FILL	1.02	6,488	2022
N LAKE ST	SOUTH AMHERST SCL (SOUTH OF RUSSIA RD)	SR 113 (TELEGRAPH RD)	SELECTIVE PATCH, MILL & 1.5" O/L	2.92	455,398	2022
<b>THE 2022 REQUIRED BUDGET FOR THE "M&amp;R" PROGRAM</b>					<b>\$461,886</b>	

Note: The "M&R" program does not have any pavement maintenance treatments with the recommended implementation years of 2020 and 2021.

**Maintain Lowest Standard PCR**

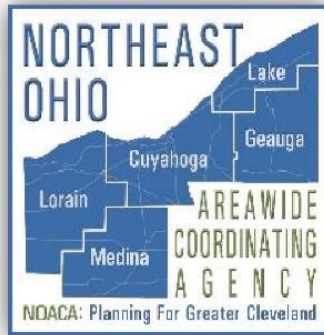
**Pavement Treatment List**

ROAD NAME	FROM	TO	RECOMMENDED TREATMENT	LANE-MILES	IMPLEMENTATION	
					COST (2019\$)	YEAR
RUSSIA RD	SOUTH AMHERST WCL	0.26 MILES EAST OF S LAKE ST	SELECTIVE PATCH, MILL & 1.5" O/L	1.02	113,028	2019
<b>THE 2019 REQUIRED BUDGET FOR THE "MAINTAIN LOWEST STANDARD PCR" STRATEGY</b>					<b>\$113,028</b>	
ROAD NAME	FROM	TO	RECOMMENDED TREATMENT	LANE-MILES	IMPLEMENTATION	
					COST (2022\$)	YEAR
N LAKE ST	SOUTH AMHERST SCL (SOUTH OF RUSSIA RD)	SR 113 (TELEGRAPH RD)	SELECTIVE PATCH, MILL & 1.5" O/L	2.92	455,398	2022
RUSSIA RD	SOUTH AMHERST WCL	0.26 MILES EAST OF S LAKE ST	CRACK FILL	1.02	6,488	2022
<b>THE 2022 REQUIRED BUDGET FOR THE "MAINTAIN LOWEST STANDARD PCR" STRATEGY</b>					<b>\$461,886</b>	

**Note: The "Maintain Lowest Standard PCR" strategy does not have any pavement maintenance treatments with the recommended implementation years of 2018, 2020 and 2021.**

This page has been intentionally left blank.





NORTHEAST OHIO  
AREAWIDE  
COORDINATING  
AGENCY  
1299 Superior Ave.  
Cleveland, Ohio 44114

Phone: 216-241-2414 FAX: 216-621-3024

[www.noaca.org](http://www.noaca.org)

 [noaca.org](http://noaca.org)  [@noaca\\_mpo](https://twitter.com/noaca_mpo)

*The preparation of this publication was financed through grants received from the Federal Highway Administration and the Ohio Department of Transportation, and appropriations from the counties of and municipalities within Cuyahoga, Geauga, Lake, Lorain and Medina. The contents do not necessarily reflect official views or policies of the U.S. Department of Transportation or the Ohio Department of Transportation. This document does not constitute a standard or regulation.*

**NOACA will STRENGTHEN regional cohesion, PRESERVE existing infrastructure, and BUILD a sustainable multimodal transportation system to SUPPORT economic development and ENHANCE the quality of life in Northeast Ohio. NOACA will STRENGTHEN regional cohesion, PRESERVE existing infrastructure, and BUILD a sustainable multimodal transportation system to SUPPORT economic development and ENHANCE the quality of life in Northeast Ohio.**