

W. 32nd Street to W. 25th Street

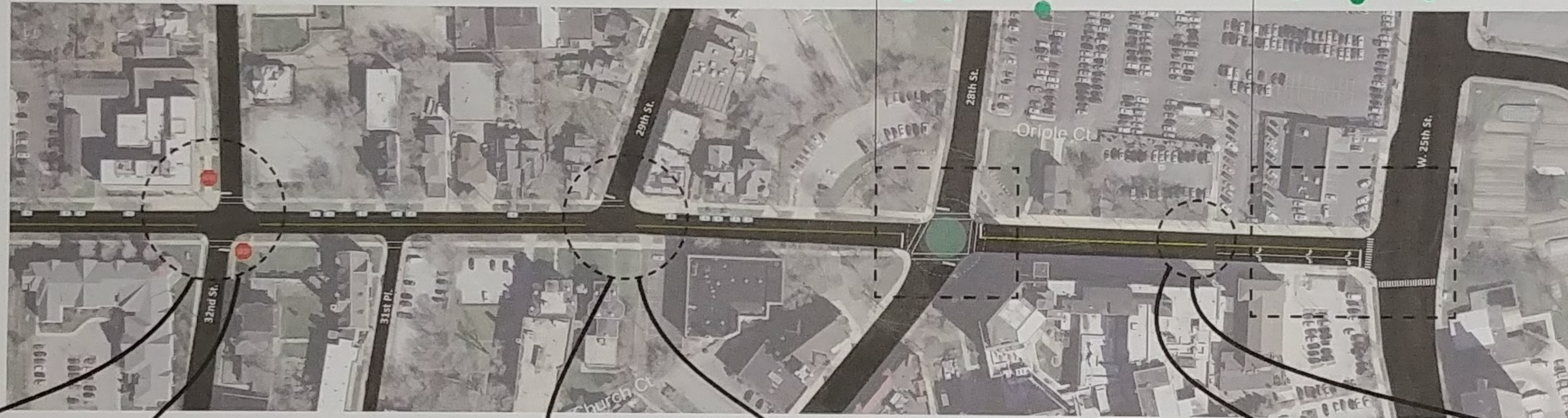
Franklin Blvd. Traffic Calming Study

INSTRUCTIONS:

1. Place **GREEN DOTS** near the things you like the most
2. Place **YELLOW DOTS** at locations you think need more consideration
3. Write any questions, comments, or suggestions on a Post-It note

AD DIVERTERS

Any chance to restore historic Franklin Circle?



1 WAY westbound w/ 2 way protected multi-purpose path by one curb.

Option A: Curb Extension, high-visibility crosswalk



Option B: Curb extension, raised crosswalk



Option A: Curb Extension, high-visibility crosswalk



Option B: Curb extension, Raised crosswalk



Option A: EXISTING (High-visibility crosswalk and Yield-to-Pedestrian signs)



Option B: Raised crosswalk



W. 52nd Street to W. 38th Street

Franklin Blvd. Traffic Calming Study

INSTRUCTIONS:

1. Place **GREEN DOTS** near the things you like the most
2. Place **YELLOW DOTS** at locations you think need more consideration
3. Write any questions, comments, or suggestions on a Post-It note

Please enforce the traffic laws first

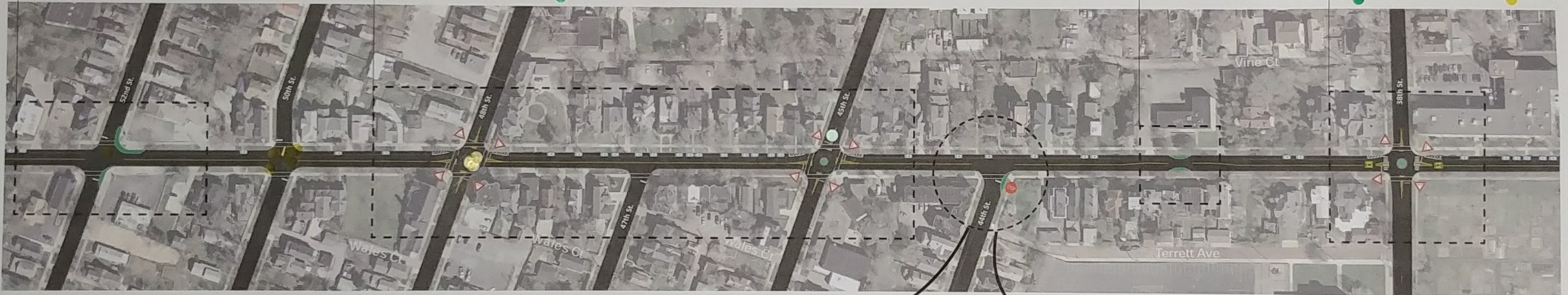
lots of school kids cross here

Curb Extensions and removal of business entrances on north and south sides of Franklin

Neighborhood Traffic Circles

Midblock Curb Extensions (narrow travel lanes)

Neighborhood Traffic Circle and High-visibility crosswalks with in-street Yield-to-Pedestrian signs



-Traffic circle @ 50th? (bad accident)

What about curb expansion @ 50th?

W50 & Franklin - push "no parking" signs back further from corner of this intersection

With all the accidents @ W50 why nothing?

I'd prefer one circle to be @ W50 vs @ W48

Option A: Curb Extension, high-visibility crosswalk

Option B: Curb extension, Raised crosswalk



traffic circles at 45th & 48th better than light

W. 69th Street to W. 54th Street

Franklin Blvd. Traffic Calming Study

SPEED BUMPS
ANTICIPATING
CROSSINGS

INSTRUCTIONS:

1. Place **GREEN DOTS** near the things you like the most
2. Place **YELLOW DOTS** at locations you think need more consideration
3. Write any questions, comments, or suggestions on a Post-It note



W. 85th Street to W. 71st Street

Franklin Blvd. Traffic Calming Study

INSTRUCTIONS:

1. Place **GREEN DOTS** near the things you like the most
2. Place **YELLOW DOTS** at locations you think need more consideration
3. Write any questions, comments, or suggestions on a Post-It note

Alternative 1

Curb Extension

Curb Extensions (street parking shifts sides)

Neighborhood Traffic Circle and removal of business entrance along north side of Franklin

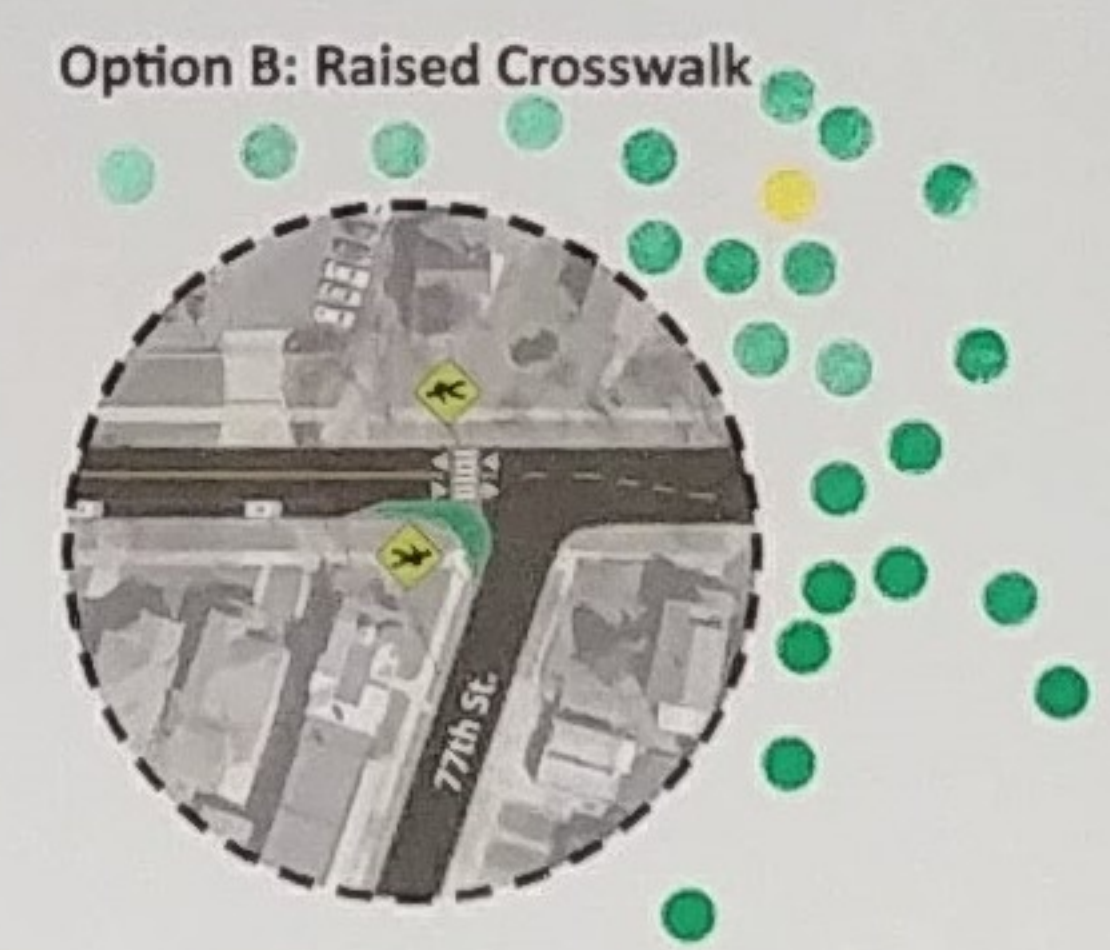


Alternative 2

Traffic Diverter



TRAFFIC Diverters would be a horrible plan



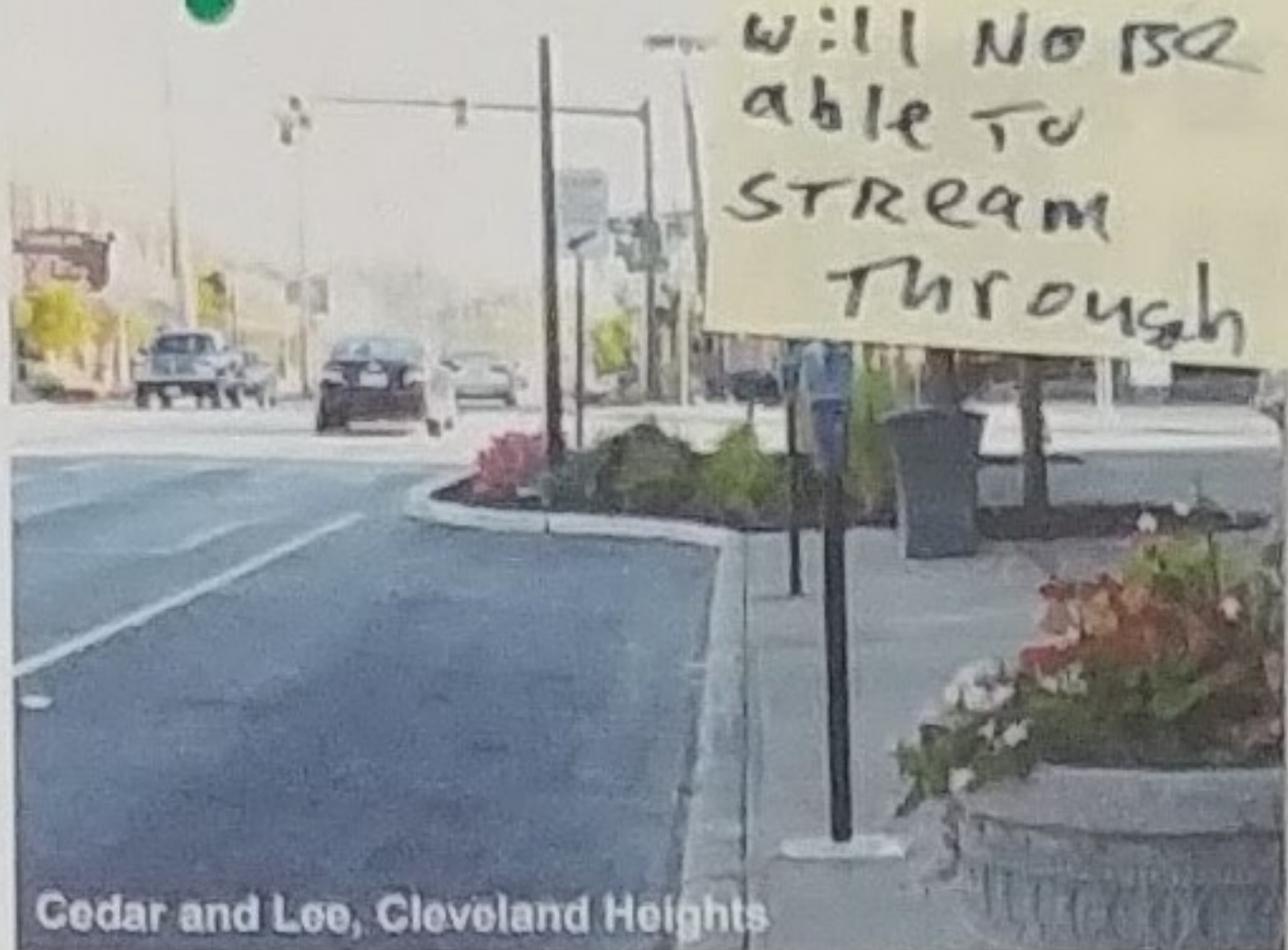
Understanding the Traffic Calming Options

Franklin Blvd. Traffic Calming Study

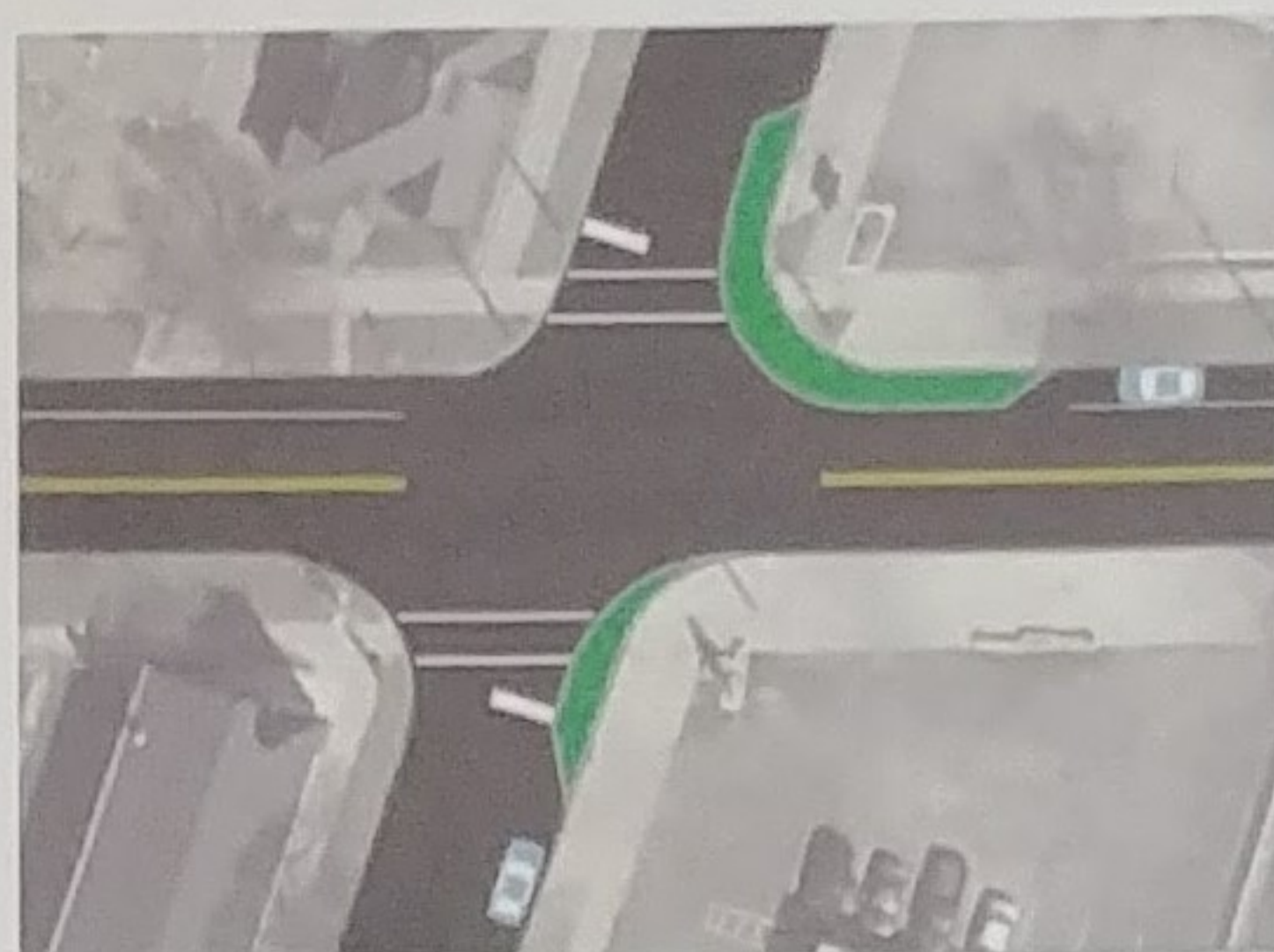


Curb Extensions

- Improve pedestrian and vehicle visibility
- Reduce crossing distance
- Encourage slower turning speeds
- Give drivers the sense they are entering a neighborhood area

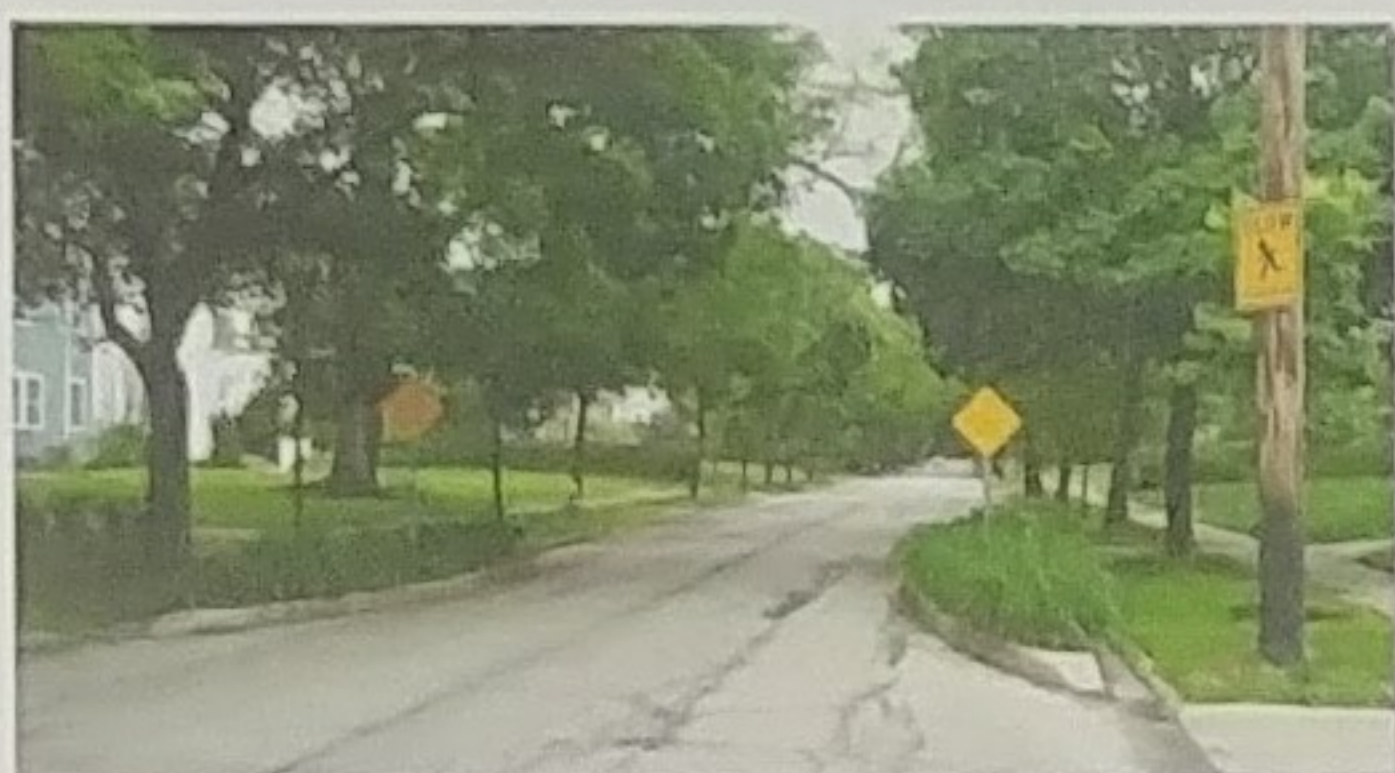


Cedar and Lee, Cleveland Heights



Midblock Curb Extensions ("neckdown")

- Reduce vehicle speeds
- Large vehicles may not be able to pass at same time



Raised Crosswalks

- Discourage speeding
- Reduce crashes
- Improve pedestrian and vehicle visibility



J.C. University, University Heights

Neighborhood Traffic Circles

- Discourage speeding
- Reduce crashes
- Reduce delay for all users
- Can replace unwarranted traffic signals with 4-way yield control



on a busy street like Franklin the landscaping needs to be shorter

Traffic Diverters

- Reduce thru-traffic volume
- Reduce crossing distance
- Discourage speeding
- Allow bicycles to pass, improve bicyclist comfort



Will make it harder for residents to drive down Franklin!

Traffic Diverters (58th and 54th St.)

