

Form Name: Planning Grant Application 2017 TLCI  
 Submission Time: December 13, 2016 4:12 pm  
 Browser: Chrome 54.0.2840.99 / Windows 7  
 IP Address: 68.99.154.199  
 Unique ID: 292646105  
 Location: 41.386199951172, -81.791496276855

Project Sponsor / Agency Name	City of Fairview Park
Address	20777 Lorain Road Fairview Park, OH 44126
Contact Name	Monica M. Jordan
Title	Community Development Planner
Office Phone Number	(440) 356-4499
E-mail Address	Monica.Jordan@fairviewpark.org
Are You Interested in NOACA Technical Assistance?	Either Will Work
Study Name	Fairview Park Lorain Road Corridor Study
Total Project Cost	\$80,000
NOACA Funding Requested	\$80,000
Local Funding Committed	\$0
Brief project description (250 Word Limit)	<p>The City of Fairview Park ("City") is proposing a study of the Lorain Road Corridor, from the Lorain Road Bridge to the North Olmsted border ("Corridor"). This corridor serves as the City's main street, as well as a major connection to Cleveland and its inner-ring suburbs. This regionally significant arterial is frequented and occupied by a diverse demographic of users and offers access to public transportation, retail, recreational opportunities, and other basic amenities. Additionally, the eastern portion of Lorain Road offers pedestrian access to the Cleveland Metroparks.</p> <p>TLCI presents a valuable opportunity to make essential recommendations for modifications to the design of Lorain Road. The current configuration of four driving lanes accommodates motorists, but is not conducive to a multi-modal transit network. The City is seeking recommendations for ways in which complete streets principles can be incorporated into the design of this major corridor, including a feasibility analysis on lane reduction, pedestrian connectivity, and green infrastructure. Additionally, the Greater Cleveland Regional Transit Authority ("GCRTA") has identified Lorain Road as a Priority Corridor that is "ideal for Transit Oriented Development and/or redevelopment". The City will collaborate with GCRTA to coordinate efforts to improve upon the connectivity of public transportation and transit waiting environments.</p> <p>It is the desire of the City to create a cohesive corridor that seamlessly accommodates multiple modes of transportation, including safe, convenient transit options for a diverse population. TLCI assistance is essential to accomplishing these goals, as well as accommodating the growing need for multi-modal and public transportation.</p>

Proposed Study Components	Traffic Analysis Economic Analysis Redevelopment Planning Transportation Demand Management Transit Planning Pedestrian Transportation Planning
1. How does the proposed study meet the first TCLI objective and advance NOACA's regional goals?	<p>The primary goal of this study is to promote increased travel options throughout the Lorain Road Corridor by incorporating complete streets principles. This corridor boasts a wide range of commercial and residential uses, and is heavily frequented by residents and visitors. The planning for and implementation of infrastructure that promotes multi-modal transportation and pedestrian connectivity is essential for ensuring safe transportation alternatives in lieu of single-occupancy vehicles. This study includes a feasibility analysis on lane reduction, pedestrian connectivity, multi-modal transportation, and green infrastructure. The current configuration of four driving lanes accommodates motorists, but is not conducive to a pedestrian-friendly environment or a multi-modal transit network.</p> <p>The overarching objective of this study is to provide a safe, comfortable, and aesthetically-appealing thoroughfare, thereby reducing reliance on motorized vehicles, promoting healthy living, and enhancing the quality of life. From 2010 to 2014, seventeen pedestrian or bike crashes occurred within the City's portion of Lorain Road, of which three were considered severe or fatal. In conjunction with the previously described study elements, complementary topics include the availability of safe crossings, lighting, signage, and buffers between sidewalks and roadways. Such analyses may further prevent incidents related to pedestrians and bicyclists.</p> <p>Another element of this project is the analyses of the City's public transit. The Corridor is serviced by the GCRTA, with whom the City will collaborate to ensure public transportation is sufficient for its residents and visitors. Such analyses will include the adequacy of transportation waiting environments and connectivity of the existing network.</p>

<p>2. How does the proposed study meet the second TLCI objective and advance NOACA's regional goal?</p>	<p>Fairview Park aspires to implement complete streets principles in coordination with the promotion of sustainable infill development and reinvestment. In conjunction with this study, the City is participating in the Environmental Protection Agency's ("EPA") Building Blocks for Sustainable Communities, a competitive, nation-wide technical assistance program focused on the sustainable infill development of Lorain Road. It is the intent of the City to coordinate all planning efforts.</p> <p>The Fairview Park Lorain Road Corridor Study will promote ongoing efforts to encourage private reinvestment along the Corridor. The City continues to secure funding from Cuyahoga County's Storefront Renovation Program. The resulting improvements have made a significant impact on the curb appeal of Lorain Road, and have spurred further reinvestment. Despite these notable achievements, vacant storefronts along Lorain Road remain a topic of concern in Fairview Park. It is the City's intent to increase foot traffic, which will subsequently increase the patronage of businesses and provide incentives for additional storefront improvements.</p> <p>In addition to promoting the reinvestment and connectivity of commercial assets within the City, Fairview Park is seeking to improve the connectivity of the corridor internally to surrounding neighborhoods and other invaluable community assets, such as Fairview Middle and High School, Gilles-Sweet Elementary School, the Gemini Recreation &amp; Community Center, Bain Park, and the Cleveland Metroparks' Rocky River Reservation.</p>
---	---

<p>3. How does the proposed study meet the third TLCI objective and advance NOACA's regional goals?</p>	<p>The City of Fairview Park aims to drive the economic development and growth of the Lorain Road Corridor by creating a distinct, identifiable "Main Street". Currently, the Corridor is lined with commercial uses, but struggles with the branding of a unified "Main Street" district. The promotion of multi-modal transportation, the potential for lane reductions, evaluation of the public transit network, and other study topics mentioned in the previous narratives, will enable the City to coordinate all of such efforts and support local businesses.</p> <p>In accordance with the 2012 Fairview Park Master Plan, the City strives to achieve the following goals: calm and improve Lorain Road as an identifiable multi-modal corridor; focus on the "core" of Fairview Park; increase bicycle and pedestrian safety; incorporate redevelopment initiatives; communicate internal and external identity; provide linkages to the Metroparks with enhanced visual and physical connections; and determine marketing efforts and branding strategies for commercial districts.</p> <p>The outcomes of the proposed study will allow the City to meet the above-mentioned goals. In practice, creating an attractive place means establishing a district that offers safe and convenient mobility, while maintaining an aesthetically-appealing and inviting environment for visitors. Topics of discussion will include streetscape design and landscape enhancements, connections between existing assets, amendments to signage guidelines, short-term methods of activating vacant storefronts, usage of open or under-utilized spaces, and the availability of pedestrian amenities, such as transit waiting areas.</p>
---	---

<p>4. How does the proposed study meet the fourth TLCI objective and advance NOACA's regional goals?</p>	<p>The Lorain Road Corridor attracts a diversity of residents and visitors. To enhance and promote the sustainability of the Fairview Park community, multi-modal transportation options must be promoted and equitably distributed. The adoption of a complete streets approach for the Corridor, some of which is located in low-and-moderate income ("LMI") block groups, demonstrates the City's desire to ensure that the outcomes of this TLCI study are equitable for all residents, visitors, and workers in the community.</p> <p>The implementation of complete streets will create an environment that makes it safe for all individuals to travel to and from a destination, regardless of the mode of transportation. In Fairview Park, it needs to be certain that access to safe transportation is available to all, including students walking and biking to and from school, owners or employees of local businesses traveling to and from work, families walking to local restaurants, or senior residents visiting Giant Eagle for groceries. The City intends to make the Corridor fully accessible by improving upon the connectivity of all community assets and amenities.</p> <p>Emphasis will be placed on public transportation, including an analyses of the distribution and accessibility of transit waiting areas. In many areas of the City, particularly the portion of Lorain Road occupied by a significant quantity of apartment complexes and a low-to-moderate senior living complex, it is unsafe to reach transit waiting areas due to the lack of safe crossings.</p>
--	---

<p>5. How does the proposed study meet the fifth TLCI objective and advance NOACA's regional goal?</p>	<p>Lorain Road is an important corridor, not only to the Fairview Park community, but to Cleveland's inner-ring suburbs and the region as a whole. To ensure local planning efforts are coordinated with current and future initiatives, the City has engaged and sought support from a number of local and regional organizations, including Greater Cleveland RTA, Cuyahoga County Planning Commission, Fairview Park Chamber of Commerce, and Forward Fairview Park. Each of these stakeholders has a vested interest in ensuring that TLCI study recommendations are relevant and impact both the community and the region. Letters of support from each organization are enclosed with this application.</p> <p>If awarded, the City will seek additional partnerships with local business owners, commercial property owners, and commercial and residential brokers and developers to attain a multifaceted knowledge base that will guide the study. In addition, the City is participating in the Environmental Protection Agency's ("EPA") Building Blocks for Sustainable Communities, a competitive, nation-wide technical assistance program focused on the sustainable infill development of Lorain Road. It is the intent of the City to coordinate all planning efforts.</p> <p>The proposed study seeks to build upon and implement the recommendations of the 2012 Master Plan (as referenced in Objective Question 3). Community input was gathered during the development of this document. Additionally, throughout the planning process of the proposed study, public meetings will be facilitated to solicit additional input from residents and stakeholders to ensure all current needs are being addressed.</p>
--	---

<p>6. How does the proposed study meet the sixth TLCI objective and advance NOACA's regional goals?</p>	<p>The intent of the proposed study is the development of a robust multi-modal transportation network that improves the cohesion and connectivity of Lorain Road. The City of Fairview Park is seeking recommendations that will make the Corridor more accommodating for all users, including pedestrians, bicyclists, and motor vehicles. The overarching objective of this study is to provide a safe, comfortable, and aesthetically-appealing thoroughfare, thereby reducing reliance on motorized vehicles, promoting healthy living, and enhancing the quality of life.</p> <p>The creation of a pedestrian-friendly, multi-use corridor directly coincides with NOACA's regional goal of enhancing quality of life. A walkable district will promote healthy and active living and reduce automobile dependence by encouraging walking, biking, and other forms of active transportation. This study will also promote the economic development of the Corridor, while enhancing safe access to amenities and community assets.</p> <p>This study takes a holistic approach to addressing the current and future needs of the City of Fairview Park, and is paramount to a sustainable future. TLCI assistance is essential for the City to achieve its transportation goals, as well as its economic and community development endeavors.</p>
---	--

<p>7. How will the sponsor manage the study, and ultimately deliver the projects it recommends?</p>	<p>Project management will be the responsibility of Fairview Park's Community Development Planner, Monica Jordan. She will administer the grant, including fulfilling all financial reporting requirements and ensuring that the project complies with all applicable federal, state, and local laws and regulations. Ms. Jordan has a demonstrated ability to successfully manage multiple grant projects and is currently administering portions of the TLCI Center Ridge Road Complete Streets Project.</p> <p>If awarded the TLCI Planning grant, a review team of representatives from the City, Cuyahoga County Planning Commission, and NOACA will provide input for the selection of a qualified firm that understands the study scope and project area. Ms. Jordan will assist the firm with coordinating stakeholder meetings and will complete the various administrative needs associated with the public input component of the study.</p> <p>If the City receives TLCI aid in the form of Technical Assistance, Ms. Jordan will ensure effective and timely communication with NOACA staff, and will adhere to all guidelines and requirements in accordance with the established contract.</p> <p>Upon completion of the study, the City will investigate funding mechanisms to implement its recommendations. The City has experience with implementing past TLCI studies and is nearly finished with the design and engineering phases of a streetscape improvement capital project that is scheduled for construction. This project was guided by recommendations of the "Lorain Road Streetscape Improvement Plan" study completed in 2007. The City's only other TLCI study is currently in progress.</p>
---	---

<p>8. What is the sponsor's experience in managing a TLCI or TLCI-like public planning process?</p>	<p>The City of Fairview Park promotes and encourages public input throughout all planning projects to ensure that current community issues are taken into account and addressed. The City takes pride in the need to regularly update its Master Plan, as recommendations contained in each iteration are completed in a timely manner. Under the current mayoral administration, two master plans have been undertaken, as well as two TLCI studies. One of the TLCI studies is currently underway in partnership with the City of Rocky River. In each of these cases, the City hired a qualified firm to lead the planning effort and made municipal staff available to provide administrative support and community outreach, as needed.</p> <p>Recently, the City successfully administered a Safe Routes to School grant for the creation of a Travel Plan for Fairview Park students. This process, which followed a model recommended by the Ohio Department of Transportation, included assembling a stakeholder group to solicit feedback and review recommendations for clarity and feasibility. A public outreach component was also integrated into the School Travel Plan process, which manifested in the form of online surveys and public meetings.</p> <p>Additionally, multiple public meetings have been facilitated by the City's Recreation Department and Development Department to solicit feedback on the Nelson Russ Park Project. This project involves the park development of a currently underutilized parcel on MacBeth Avenue. The City will continue to prioritize public input as a necessary and valued component of its planning efforts.</p>
<p>Local Match Funding Level</p>	<p>No local match (no points)</p>
<p>Attachment 1: Council/Board resolution to apply for TLCI Planning Grant and fund local match (if applicable)</p>	<p><a href="https://s3.amazonaws.com/files.formstack.com/uploads/2496909/46336346/292646105/46336346_fairview_park_lorain_road_corridor_study_resolution.pdf">https://s3.amazonaws.com/files.formstack.com/uploads/2496909/46336346/292646105/46336346_fairview_park_lorain_road_corridor_study_resolution.pdf</a></p>
<p>Attachment 2: Map of proposed project study area</p>	<p><a href="https://s3.amazonaws.com/files.formstack.com/uploads/2496909/46336347/292646105/46336347_fairview_park_lorain_road_corridor_study_project_study_area.pdf">https://s3.amazonaws.com/files.formstack.com/uploads/2496909/46336347/292646105/46336347_fairview_park_lorain_road_corridor_study_project_study_area.pdf</a></p>
<p>Attachment 3: Letters of support</p>	<p><a href="https://s3.amazonaws.com/files.formstack.com/uploads/2496909/46336348/292646105/46336348_fairview_park_lorain_road_corridor_study_letters_of_support.pdf">https://s3.amazonaws.com/files.formstack.com/uploads/2496909/46336348/292646105/46336348_fairview_park_lorain_road_corridor_study_letters_of_support.pdf</a></p>
<p>Are you submitting more than one TLCI Planning Grant application?</p>	<p>No</p>

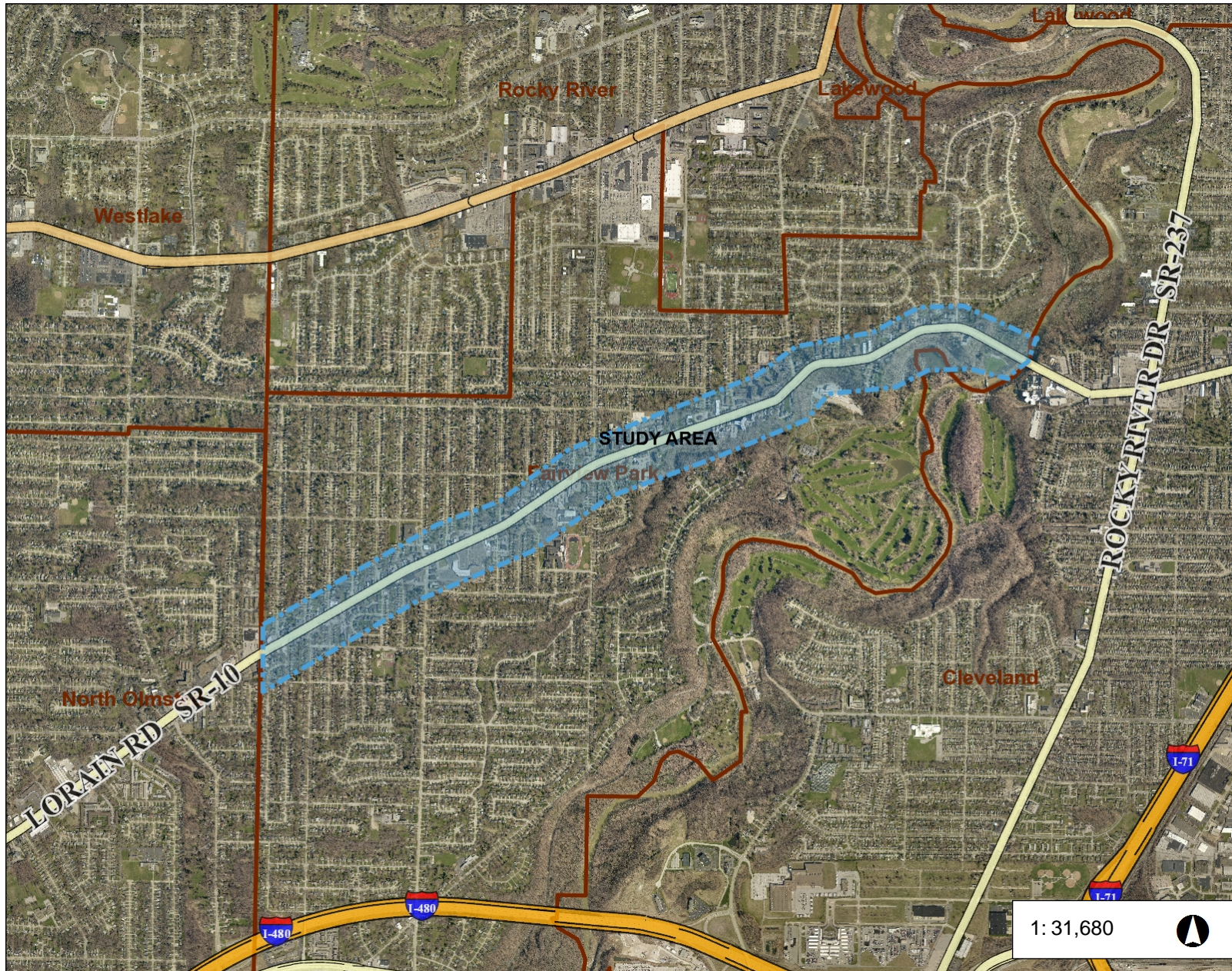
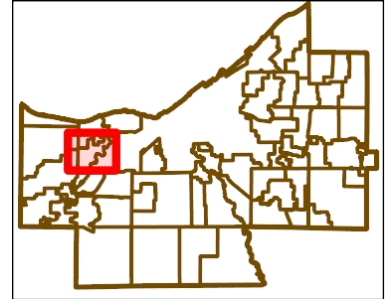
Digital signature of person completing

application:

Monica Jordan



# Fairview Park Lorain Road Corridor Study - Project Study Area

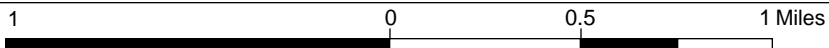


Date Created: 12/13/2016

### Legend

- Interstate
- US Route
- State Route
- Municipalities

1: 31,680



Projection:  
WGS\_1984\_Web\_Mercator\_Auxiliary\_Sphere

This map is a user generated static output from an Internet mapping site and is for reference only. Data layers that appear on this map may or may not be accurate, current, or otherwise reliable.  
THIS MAP IS NOT TO BE USED FOR NAVIGATION

