



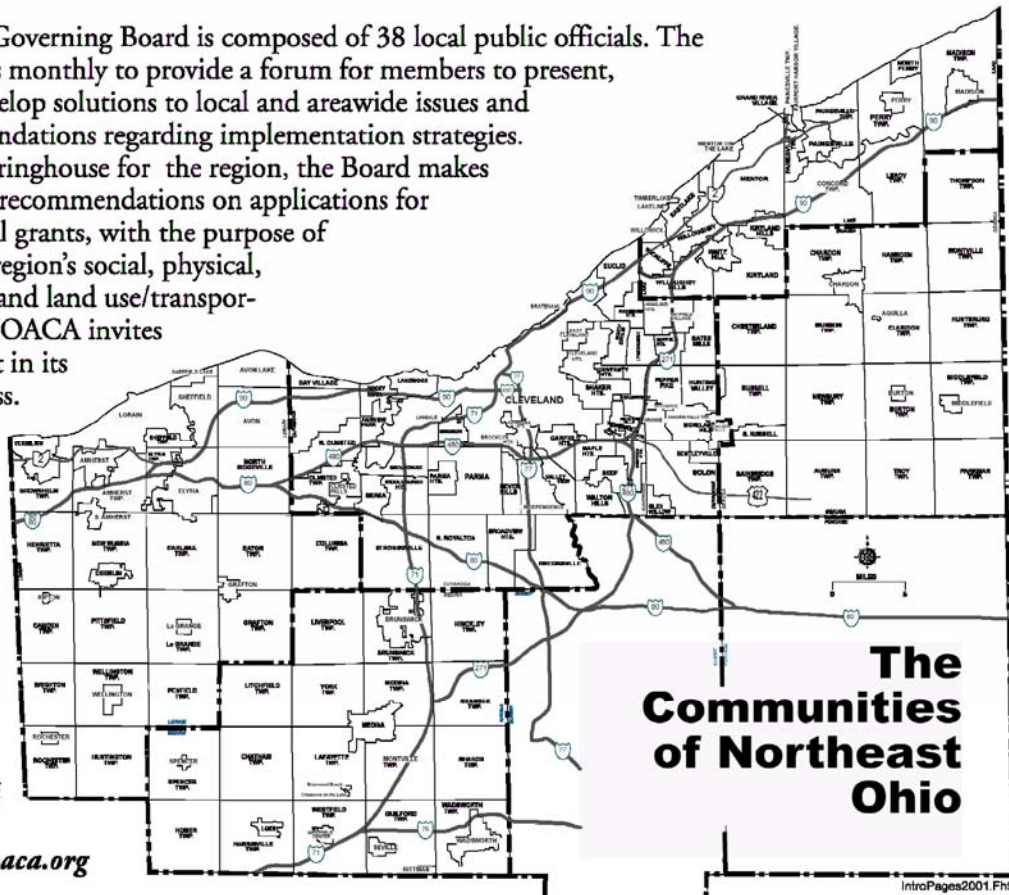
The Northeast Ohio Areawide Coordinating Agency (NOACA) is a public Organization serving the counties of and municipalities & townships within Cuyahoga, Geauga, Lake, Lorain and Medina (covering an area with 2.1 million people). NOACA is the agency designated or recognized to perform the following functions:

- **Serve as the Metropolitan Planning Organization (MPO), with responsibility for comprehensive cooperative and continuous planning for highways, public transit, and bikeways, as defined in the Transportation Equity Act for the 21st Century.**
- **Perform continuous water quality, transportation-related air quality and other environmental planning functions.**
- **Administer the area clearinghouse function, which includes providing local government with the opportunity to review a wide variety of local or state applications for federal funds.**
- **Conduct transportation and environmental planning and related demographic, economic and land use research.**
- **Serve as an information center for transportation and environmental and related planning.**
- **At NOACA Governing Board direction, provide transportation and environmental planning assistance to the 172 units of local, general purpose government.**

The NOACA Governing Board is composed of 38 local public officials. The Board convenes monthly to provide a forum for members to present, discuss and develop solutions to local and areawide issues and make recommendations regarding implementation strategies. As the area clearinghouse for the region, the Board makes comments and recommendations on applications for state and federal grants, with the purpose of enhancing the region's social, physical, environmental and land use/transportation fabric. NOACA invites you to take part in its planning process.

Feel free to participate, to ask questions and to learn more about areawide planning. For more information, call:

(216) 241-2414
or log on at:
<http://www.noaca.org>



IntroPages2001.Fh9

2008 NOACA BOARD MEMBERS

President: Mary E. Samide, Geauga County Commissioner
First Vice-President: William M. Grace, Mayor, City of Elyria
Second Vice President: James R. Gills, P.E., P.S., Lake County Engineer
Secretary: Peter Lawson Jones, President, Cuyahoga County Board of Commissioners
Assistant Secretary: Betty C. Blair, President, Lorain County Board of Commissioners

Treasurer: Stephen D. Hambley, Medina Commissioner
Assistant Treasurer: Julius Ciaccia, Jr., Executive Director, Northeast Ohio Regional Sewer District
Assistant Treasurer: Robert E. Aufuldish, President, Lake County Board of Commissioners
Immediate Past President: Robert N. Brown, Director of Planning, City of Cleveland

Members:

Cuyahoga County

Robert G. Blomquist, Mayor, City of Olmsted Falls
Scott E. Coleman, Mayor, City of Highland Heights
Jimmy Dimora, Cuyahoga County Commissioner
Robert C. Downey, Cleveland Heights City Manager
Timothy Hagan, Cuyahoga County Commissioner
Peter Lawson Jones, President, Cuyahoga County Board of Commissioners
Robert C. Klaiber, Jr., P.E., P.S., Cuyahoga County Engineer
Thomas E. O'Grady, Mayor, City of North Olmsted
Kevin C. Patton, Mayor, City of Solon
Michael S. Procuk, Mayor, Village of Brooklyn Heights
Robert A. Stefanik, Mayor City of North Royalton

City of Cleveland

Anthony Brancatelli, Councilman, City of Cleveland
Robert N. Brown, Director, Cleveland Planning Commission
Joseph Cimperman, Councilman, City of Cleveland
Roosevelt Coats, Councilman, City of Cleveland
Frank G. Jackson, Mayor, City of Cleveland
Jomarie Wasik, Director of Public Services, City of Cleveland

Lake County

Ted Andrzejewski, Mayor City of Eastlake
Robert E. Aufuldish, President, Lake County Board of Commissioners
James R. Gills, PE., P.S. Lake County Engineer
Raymond E. Sines, Lake County Commissioner
Daniel P. Troy, Lake County Commissioner

Gauga County

Craig S. Albert, President, Geauga County Board of Commissioners
Mary E. Samide, Geauga County Board of Commissioner
William S. Young, Geauga County Commissioner

Lorain County

Betty C. Blair, President, Lorain County Board of Commissioners
Kenneth P. Carney, Sr. P.E., P.S. Lorain County Engineer
William M. Grace, Mayor, City of Elyria
Ted Kalo, Lorain County Commissioner
Anthony M. Krasienko, Mayor City of Lorain
Frank J. Pakish, New Russia Township Trustee
John J. Piskura, Mayor City of Sheffield Lake

Medina County

Lynda Bowers, Lafayette Township Trustee
Chris Easton, City of Wadsworth Public Service Director
Stephen D. Hambley, Medina County Commissioner

Northeast Ohio Regional Sewer District (NEORS)

Julius Ciaccia, Jr., Executive Director

The Greater Cleveland Regional Transit Authority (GCRTA)

George M. Dixon, Board President

The Ohio Department of Transportation (ODOT)

Bonnie Teeuwen, Deputy Director, ODOT District 12

Ex officio Member:

William T. Skowronski, Chief, Northeast District Office
Ohio Environmental Protection Agency

NOACA Transportation Advisory Committee

Chairperson: William M. Grace, Mayor, City of Elyria

Cuyahoga County

Paul A. Alsenas, Director, Cuyahoga County Planning Commission
Robert N. Brown, Director, Cleveland Planning Commission
Joseph A. Calabrese, General Manager, GCRTA
Joseph Cimperman, Councilman, City of Cleveland
Randall DeVaul, P.E., Commissioner, Cleveland Div. of Eng. & Cons.
Jimmy Dimora, Cuyahoga County Commissioner
Robert C. Downey, City Manager, City of Cleveland Heights
Timothy Hagan, Cuyahoga County Commissioner
Robert C. Klaiber, Jr., P.E., P.S., Cuyahoga County Engineer
Rob Mavec, Commissioner, Cleveland Traffic Engineering
Kevin C. Patton, Mayor, City of Solon

Lake County

Robert E. Aufuldish, President, Lake County Board of Commissioners
James R. Gills, PE., P.S. Lake County Engineer
Raymond Jurkowski, General Manager, LAKETRAN
Daniel P. Troy, Lake County Commissioner
Darrell C. Webster, Director, Lake County Planning Commission

Lorain County

Robin Bulan, General Manager, Lorain County Transit
Betty C. Blair, President, Lorain County Board of Commissioners
Kenneth P. Carney, Sr., P.E., P.S., Lorain County Engineer
William M. Grace, Mayor, City of Elyria
Ted Kalo, Lorain County Commissioner
William Ulik, Director, Lorain County Planning Development

Gauga County

David Dietrich, Director, Geauga County Planning Commission
Robert L. Phillips, P.E., Geauga County Engineer
Kristina Fenselon, Transit Director, Geauga County Transit
Mary E. Samide, Geauga County Board of Commissioner

Medina County

Stephen D. Hambley, Medina County Commissioner
Michael Salay, P.E., Medina County Engineer
Patrice Theken, Director, Medina County Planning Commission
Scott Uhas, Director, Medina County Transit

Other Voting Members: District Deputy Directors:

Bonnie Teeuwen, DD (ODOT-12); John Hart (ODOT-3)
William T. Skowronski, Chief, Northeast District Office Ohio EPA

NOACA Transportation Advisory Committee (Continued)

Private Sector Voting Members:

Frank Detillio, President, Lorain County Chamber of Commerce (Lorain County)
James Douth, Executive Director, Medina County Economic Development Corporation (Medina County)
John Loftus, Executive Director, Lake County Port Authority (Lake County)
Deb Janik, Sr. Vice President, Greater Cleveland Partnership (Cuyahoga County)
Bill Skomrock, Manager of Safety, DistTech (Geauga County)

Non-voting members:

James Cardina, Fairport Harbor Port Authority
Dennis A. Decker, FHWA Ohio Division Administrator
Adam Wasserman, Cleveland-Cuyahoga County Port Authority
Ricky D. Smith, Director, Cleveland Department of Port Control, Cleveland Hopkins International Airport
Ernest Gubry, Federal Aviation Administration
Richard Novak, Executive Director, Lorain Port Authority
Gary Suhadolnik, Executive Director, Ohio Turnpike Commission

Environmental Advisory Committee

Chairperson: Timothy Hagan, Cuyahoga County Commissioner

Air Quality Subcommittee Chair: Robert E. Aufuldish, President, Lake County Commissioners

Water Quality Subcommittee Chair: James R. Gills, P.E., P.S., Lake County Engineer

Cuyahoga County

Terry Allen, Cuyahoga County Health Commissioner
Anthony Brancatelli, Councilman, City of Cleveland
Matthew Carroll, Interim Director, Cleveland Public Health
Jimmy Dimora, Cuyahoga County Commissioner
Ann Gliha, Environmental Services Manager, Cuyahoga County Sanitary Engineer's Office (*representing Sanitary Engineers*)
Julius Ciaccia, Jr., Executive Director, NEORS

Jim Storer, Cuyahoga County Soil and Water Conservation District
(*representing Soil and Water Conservation Districts*)

Lake County

Robert E. Aufuldish, President, Lake County Commissioners
James R. Gills, P.E., P.S., Lake County Engineer
Frank Kellogg, Lake County Environmental Health Director
(*representing Local Air Agencies*)

Lorain County

Betty C. Blair, President, Lorain County Board of Commissioners
Ken Pearce, Lorain County Health Commissioner
(*representing Health Districts*)
Kenneth P. Carney, Sr., P.E., P.S., Lorain County Engineer

Medina County

Stephen D. Hambley, Medina County Commissioner

Geauga County

Mary E. Samide, Geauga County Commissioner

Non-Voting Members:

Lyn Luttner, Manager, Cleveland Office, US EPA
William T. Skowronski, Chief, Northeast District Office,
Ohio Environmental Protection Agency

Planning Advisory Committee

Chairperson: Patrice Theken, Director, Medina County Planning Commission

Paul A. Alsenas, Director, Cuyahoga County Planning Commission
Robert N. Brown, Director, Cleveland Planning Commission
David Dietrich, Director, Geauga County Planning Commission

Patrice Theken, Director, Medina County Planning Commission
William Ulik, Director, Lorain County Planning Development
Darrell C. Webster, Director, Lake County Planning Commission

NOACA Directors:

Howard R. Maier, FAICP, Executive Director
Stephen E. DeJohn, Esq., Director, Legal Counsel
Cheryl A. Kurkowski, CPA, Director of Finance & Operations

Planning and Programs Division:

Ronald T. Eckner, P. E., Director of Planning
John Hosek, Director of Programs

Associate Directors:

Bill Davis, Associate Director of Planning
Steve Jones, Associate Director of Divisional Services

1) Title & Subtitle NOACA 2007 Transit Network Guide (Includes 2008 Park-N-Ride Survey Results)	2) NOACA Report No.
3) Author(s) David Kuebler Contributors: Gary Grano, Daniel Boyle and RTS Team Reviewers: Bill Davis, Mahmoud Al-Lozi	4) Report Date August 2008
5) Performing Organization Name & Address Northeast Ohio Areawide Coordinating Agency 1299 Superior Avenue, Cleveland, OH 44114-3204 Phone: (216) 241-2414 FAX: (216) 621-3024 Web site: www.noaca.org	6) Project/Task No. 6051 (FY 2008)
	7) NOACA Contract/Grant No. ODOT/FHWA
8) Sponsoring Agency Name & Address Ohio Department of Transportation 1980 W. Broad St., Box 899 Columbus, OH 43216-0899	9) Type of Report & Period Covered (January 1, 2007 – December 31, 2007)
	10) Sponsoring Agency Code
11) Supplementary Notes Federal funding for this project was provided by the Federal Highway Administration and administered by the Ohio Department of Transportation.	
12) Abstracts This document contains information about fixed route transit service and the number of buses in the NOACA region. It estimates weekday ridership by route along with a ridership comparison between 2006 and 2007. This document also includes an inventory of the Park-N-Ride lots in the NOACA region, along with a count of vehicles in each lot.	
13) Key Words & Document Analysis A. Descriptors B. Identifiers/Open Ended Terms	
14) Availability Statement NOACA	15) No. Pages 33
	16) Price

NOACA 2007 TRANSIT NETWORK GUIDE

(Includes 2008 Park-N-Ride Survey Results)

August 2008

Prepared by

NORTHEAST OHIO AREAWIDE COORDINATING AGENCY

Principal Author: David Kuebler

MARY E. SAMIDE
BOARD PRESIDENT

HOWARD R. MAIER, FAICP
EXECUTIVE DIRECTOR

The preparation of this publication was financed through grants received from the Federal Highway Administration and the Ohio Department of Transportation and appropriations from the counties of and municipalities within Cuyahoga, Geauga, Lake, Lorain and Medina. The contents do not necessarily reflect official views or policies of the U.S. Department of Transportation or the Ohio Department of Transportation. This report does not constitute a standard or regulation.

TABLE OF CONTENTS

	PAGES
Executive Summary	1
Introduction	2
Methodologies: Used in this Report	2
Ridership Changes Between 2006 and 2007	6
Ridership Changes Over 2003 and 2007	10
Transit Network Guide (Route Data):	
Greater Cleveland Regional Transit Authority (GCRTA)	12
Brunswick Transit Alternative (BTA)	20
Lorain County Transit (LCT)	20
LAKETRAN	21
METRO (North Coast Express)	22
2008 Park-N-Ride Lot Surveys	28
Conclusion	33
 <u>List of Tables, Graphs and Maps</u>	
Table 1: GCRTA Ridership Comparison between 2006 and 2007 by Route	7
Table 2: BTA Ridership Comparison between 2006 and 2007 by Route	8
Table 3: LCT Ridership Comparison between 2006 and 2007 by Route	8
Table 4: LAKETRAN Ridership Comparison between 2006 and 2007 by Route	9
Table 5: METRO Ridership Comparison between 2006 and 2007 (Routes X-60 & X-61)	9
Graph 1: Percent of Ridership Change between 2003 - 2007	10
Graph 2: Average Weekday Ridership by Transit Agency	10
Graph 3: GCRTA Monthly Fixed Route Ridership Comparison between 2006-2007	23
Graph 4: BTA Monthly Fixed Route Ridership Comparison between 2006-2007	24
Graph 5: LCT Monthly Fixed Route Ridership Comparison between 2006-2007	25
Graph 6: LAKETRAN Monthly Fixed Route Ridership Comparison between 2006-2007	26
Graph 7: METRO North Coast Express Ridership Comparison between 2006-2007	27
Table 6: PARK-N-RIDE INVENTORY (2001-2008)	30
Table 7: 2008 PARK-N-RIDE SURVEY LOG RECORDS	31
Map 1: 2008 PARK-N-RIDE SURVEY LOCATIONS	32

EXECUTIVE SUMMARY

Every year, NOACA produces a Transit Network Guide. This report monitors the amount of fixed route transit service available along with ridership estimates in the NOACA five-county region. The purpose of this report is as input into NOACA's Travel Demand Modeling (TDM) process, the Regional Transportation System (RTS) Study, Project Planning Reviews (PPRs) and other NOACA documents. The term "ridership" in this report is defined as average weekday ridership, and the frequencies (headways) of service are based on the morning and midday time periods on a typical weekday. Along with ridership, the Transit Network Guide also lists the number of average weekday buses (in both directions) by route.

The comparison between 2007 and 2006 data included in this report indicates that average weekday ridership for all fixed route service increased by 1.2 percent, or 2,529 trips in the region. Fixed route service data was provided by the Greater Cleveland Regional Transit Authority (GCRTA), LAKETRAN, Lorain County Transit (LCT), Brunswick Transit Alternative (BTA) and for its express routes to Cleveland by Akron METRO.

Part of the transit monitoring process includes a survey of the region's Park-N-Ride facilities. These surveys were conducted in the spring of 2008. The ridership information in this report is from 2007. Generally, in NOACA's planning area, Park-N-Ride facilities have an occupancy rate of 54 percent of their capacity on a typical weekday. The Park-N-Ride lots along the heavy rail (Red Line) line account for 44 percent of the region's Park-N-Ride parking spaces, light rail parking spaces (Blue and Green Lines) account for 18 percent and the remaining 38 percent are at bus Park-N-Ride lots.

Introduction

The Transit Network Guide is produced by NOACA on an annual basis. This report is intended to show the availability of fixed route transit service by monitoring the headways or frequencies of all fixed transit routes in our area. Additionally, route ridership estimates are provided along with the usage of the area's Park-N-Ride facilities to monitor utilization of these facilities. Along with the fixed route service in the NOACA region, there are also two transit systems, Geauga County Transit and Medina County Transit that provide demand response transit service only, which are not included in this guide.

The information in the Transit Network Guide is used for Project Planning Reviews (PPR's) at NOACA and is the beginning point of creating the transit network that is used in the travel demand modeling process and RTS Study. This guide lists all fixed route/line services operated by the Greater Cleveland Regional Transit Authority (GCRTA), Brunswick Transit Alternative (BTA), Lorain County Transit (LCT), and LAKETRAN. Also included are Akron's METRO North Coast Express Routes, which serve downtown Cleveland. The route schedules used for this guide were collected in December 2007.

Methodologies Used in this Report

The ridership estimates are based on an average weekday scenario. This is done so a comparison can be made between transit ridership and average daily traffic counts (ADT), which count the number of vehicles along certain roadways on weekdays. The NOACA travel demand model (TDM) also estimates transit ridership based on a typical weekday. The ridership figures are for the entire route; that is, the number of people boarding the route on a typical weekday. The report does not provide information on ridership along portions of a transit route.

The following is a description of the information displayed in the tables that appear later in this document. The route schedule date for each route is listed to the left of the operator's route number on the tables beginning on page 8. The different route categories (types of service) are listed in the Network Guide immediately to the right of the route number. The transit categories identify different types of service (i.e., a local bus, express bus or community circulators), which may have different operating speeds and transit fares.

The route categories used in the 2007 Transit Network follow:

LF = Local Fixed Routes - (LAKETRAN and Lorain County Transit only)

LR = Local Radial Routes

CF = Crosstown/Feeder Routes

XF = Express/Flyer Routes

CC = Community Circulator Routes

DL = Downtown Loop Routes

SS = Seasonal Supplemental Routes

RAIL = Heavy Rail (Red Line), Light Rail (Blue and Green Lines)

Radial local bus service is used to collect and distribute high traffic along developed corridors radiating to and from the Cleveland Central Business District (CBD). Crosstown / Feeder bus service is used to link routes and route segments. Express service is used to provide faster service to major attractions during peak ridership periods. Circulator Service serves areas with high employment and other activities in a defined area.

To the right of the route category is the NOACA line number, which identifies each route or line within a route. In many cases, a GCRTA route schedule will show many different lines within a route with various origin and destination points. An example of this would be:

<u>ROUTE SCHEDULES DATE</u>	<u>OPERATOR ROUTE NUMBER</u>	<u>ROUTE CATEGORY</u>	<u>NOACA LINE NUMBER</u>	<u>AM/MIDDAY HEADWAYS</u>	<u>DESCRIPTION ROUTE/LINE</u>	<u>NUMBER OF WEEKDAY BUSES (IN BOTH DIRECTION)</u>	<u>AVERAGE WEEKDAY RIDERSHIP</u>
12/16/07	1				(ST. CLAIR)	183	7,819
		LR	1.1	18.4/30.1	Euclid P-N-R - W.3 rd /Superior		
		LR	1.2	15.1/26.7	E. 152 nd /St.Clair - W.3 rd /Superior		

The above descriptions show different origins and destinations, although they are all considered to be Route 1 (St. Clair). The NOACA line number identifies each line (sub-route) listed in a GCRTA route schedule.

The NOACA line number is used when the travel demand model transit network is being created so that the model can simulate a specific level of transit service. It is an arbitrary number used to identify a

specific portion of a route. The example above of Route 1 includes two lines with different origins: the Euclid Park-N-Ride and E.152nd St. / St. Clair; and the same destination: West 3rd St. / Superior Ave. The correct way to interpret this would be: Route 1, Category LR, and NOACA Line 1.1 and 1.2.

To the right of the NOACA line number is the column labeled “AM/Midday Headways,” meaning the morning and midday peak period. The headway identifies the frequency of transit service (in minutes) on a particular line within either the morning or midday time period. The a.m./midday peak headway is calculated from each individual route time schedule by line. The morning peak period is a three-hour time period from 6:00-9:00 a.m. The midday peak period is from 10:00 a.m. to 3:00 p.m. The calculation to determine a peak period headway is the difference in minutes between the first and last arrival time of a line within a peak period divided by the number of trips minus one in that time period.

$$\frac{\text{difference between the first and last arrival time (in minutes)}}{(\text{number of trips}) - 1} = \text{Headway}$$

Example: A fictitious bus line has 12 runs in the a.m. peak period. The first run arrives at Public Square at 6:12 a.m. and the last run arrives at 8:56 a.m. The a.m. headway would be calculated as follows:

$$\frac{164 \text{ minutes}}{12 \text{ runs} - 1} = 14.9 \text{ Min}$$

If only one run is noted for that headway time period, for any one line, the headway is set to 60.0 minutes.

The “Description Route/Line” column lists the origin and destination of each line. For radial routes, the destination would be a point in the Cleveland CBD, as noted in the route schedule. Crosstown routes are coded in the direction of a major activity center, such as a rail station or shopping mall, which is also determined by the route schedule.

The number of weekday buses (in both directions) has been added to the transit guide as a future input into the Regional Transportation System Study. The number of buses will help show which roads are heavily used by transit vehicles.

Ridership for each route was calculated from information provided by each service provider. GCRTA provided ridership figures by route for each month of 2007. These ridership figures included every day within each month; however, the tables in this report show average weekday ridership. NOACA calculates average weekday ridership by dividing the total annual ridership by the number of weekdays, plus a factor for Saturdays, Sundays and holidays. Saturdays are treated as 0.454 of an average weekday, while Sundays and holidays are equivalent to 0.204 of an average weekday. The factors for Saturdays, Sundays and holidays are based upon average ridership for these days compared to an average weekday.¹ An example of how average weekday ridership was calculated for GCRTA is as follows:

STEP 1 - For each month in 2007, the route ridership figures supplied by GCRTA are adjusted upwards to account for normal undercounting of passes and transfer riders. At this point the monthly sum of all fixed routes equals GCRTA's ridership figures that are published in its quarterly ridership reports.

STEP 2 - The monthly adjusted ridership figures are added together to obtain total annual 2007 ridership by route.

STEP 3 - The yearly individual route totals are divided by the calculated yearly factors to generate average weekday ridership figures. The factors for 2007 are as follows:

255 weekdays x 1.0	=	255.000
52 Saturdays x 0.454	=	23.608
52 Sundays x 0.204	=	10.608
<u>6</u> holidays x 0.204	=	<u>1.224</u>
365 days		290.440

- If a route has only weekday service (examples are routes 27F, 51F and 87F), the factor used in the ridership calculation is 255.0.
- If a route has weekday and Saturday service (examples are routes 68, 801 and 806), the factor used in the ridership calculation is 278.608.
- If a route has service seven days a week, 365 days a year (examples are routes 1, 6, 39 and 86), the factor used in the ridership calculation is 290.440.

¹The Saturday, Sunday and holiday factors are supplied by GCRTA. The holidays are New Years Day, Memorial Day, Independence Day, Labor Day, Thanksgiving Day and Christmas Day.

Average daily ridership for the Brunswick Transit Alternative (BTA) and Lorain County Transit (LCT) was calculated by multiplying total yearly route ridership by the percentage of weekday trips offered in 2007. LAKETRAN provided NOACA with fixed route ridership by month and by route. The number of weekdays of service divided by ridership was used to obtain an average weekday ridership.

Ridership in this report is listed by route total. There is no specific NOACA line ridership information.

Ridership Changes Between 2006 and 2007

The data shows that GCRTA's fixed route ridership increased by 1.4 percent in 2007. This is the fifth consecutive year GCRTA has posted increased ridership. BTA showed a 10.0 percent increase in daily ridership, which amounts to an increase of nine riders per day. Lorain County Transit's 2007 fixed route ridership decreased by 12.0 percent and LAKETRAN's average weekday ridership decreased by 0.1 percent in 2007. LCT and LAKERTAN have both posted ridership losses for the last two years. Akron Metro's North Coast Express routes showed a 7.8 percent increase from 2006 ridership.

The tables on pages 7-9 show ridership comparisons of all fixed routes between 2006 and 2007

Table 1

**GCRTA AVERAGE WEEKDAY RIDERSHIP COMPARISON BETWEEN 2006 AND 2007
(by fixed route)**

ROUTE #	2007 RIDERSHIP	2006 RIDERSHIP	% CHANGE FROM 2006	ROUTE #	2007 RIDERSHIP	2006 RIDERSHIP	% CHANGE FROM 2006
1	7,819	8,144	-4.0%	147 (3)		861	-100.0%
2	2,958	3,048	-3.0%	48/48A	3,546	3,575	-0.8%
326	13,445	13,405	0.3%	49	273	277	-1.4%
4	1,220	1,287	-5.2%	49F (2)	48	45	6.7%
5	1,068	1,094	-2.4%	50	4,170	4,092	1.9%
6	10,284	11,309	-9.1%	51F	1,073	922	16.4%
7X	846	753	12.4%	51X	1,148	1,347	-14.8%
8	1,604	1,570	2.2%	251	391	400	-2.3%
9X	3,046	3,406	-10.6%	451	291	316	-7.9%
10	6,931	6,985	-0.8%	52 (1)	911		
11 (1)	1,146			55F	287	371	-22.6%
12 (1)	862			55X	2,240	2,056	8.9%
13 (1)	658			57 (2)	184	493	-62.7%
14	8,001	7,874	1.6%	247 (3)		1,639	-100.0%
15	7,363	7,994	-7.9%	61	2,297	1,725	33.2%
15F (2)	167	206	-18.9%	62	1,237	717	72.5%
16	840	789	6.5%	263	786	870	-9.7%
17	58	55	5.5%	66X	20,343	18,857	7.9%
18 (1)	36			67X/AX	11,014	10,011	10.0%
19	3,769	3,655	3.1%	68	310	281	10.3%
20 (2)	2,451	1,850	32.5%	70	682	647	5.4%
20A	2,682	2,438	10.0%	75X	2,294	2,319	-1.1%
20C	237	388	-38.9%	76F/X	852	617	38.1%
22	7,664	8,051	-4.8%	77F	1,621	1,838	-11.8%
23	1,905	1,992	-4.4%	78	905	929	-2.6%
24 (1)	395			79A/B	2,811	2,605	7.9%
25B/W	3,473	3,435	1.1%	81	1,972	1,871	5.4%
27F	37	38	-2.6%	83	664	688	-3.5%
28	5,602	5,630	-0.5%	86	721	635	13.5%
30	2,376	2,445	-2.8%	86F	49	53	-7.5%
32X	2,253	2,277	-1.1%	87F	131	163	-19.6%
33	240	240	0.0%	88X	1,104	1,136	-2.8%
34	959	1,078	-11.0%	90F	1,423	1,355	5.0%
35	4,635	4,408	5.1%	94	796	779	2.2%
135	394	409	-3.7%	96F	117	131	-10.7%
36	346	338	2.4%	441	450	231	94.8%
37	1,669	1,501	11.2%	801	562	699	-19.6%
38	1,018	1,048	-2.9%	802	554	488	13.5%
39	2,231	2,158	3.4%	803	554	611	-9.3%
39F(2)	559	520	7.5%	804	1,660	1,848	-10.2%
239	385	414	-7.0%	805	444	435	2.1%
40	4,985	5,016	-0.6%	806	1,010	1,140	-11.4%
41	5,008	5,011	-0.1%	807	1,126	1,063	5.9%
42	47	51	-7.8%	808	140	156	-10.3%
43	65	49	32.7%	809	949	1,080	-12.1%
45Y/R	1,133	1,150	-1.5%	820	539	626	-13.9%
145Y/R	731	625	17.0%	821	219	206	6.3%
46	154	131	17.6%	822	109	88	23.9%
246	1,042	1,026	1.6%	823 (2)	56	6	833.3%
47	472	930	-49.2%				
TOTAL	202,332	199,519	1.41%				

- (1)=Routes which began service in 2007.
- (2)=Routes which discontinued service in 2007.
- (3)=Routes which discontinued service in 2006.

- School trips and other special service trips are not included in the above table.

Table 2

**BRUNSWICK TRANSIT ALTERNATIVE (BTA)
AVERAGE DAILY RIDERSHIP COMPARISON BETWEEN 2006 AND 2007
(by fixed route)**

ROUTE #	2007 RIDERSHIP	2006 RIDERSHIP	% CHANGE FROM 2006
1 - NORTH	41	37	10.8%
2 - SOUTH	58	53	9.4%
TOTAL	99	90	10.0%

Table 3

**LORAIN COUNTY TRANSIT (LCT)
AVERAGE DAILY RIDERSHIP COMPARISON BETWEEN 2006 AND 2007
(by fixed route)**

ROUTE #	2007 RIDERSHIP	2006 RIDERSHIP	% CHANGE FROM 2006
1	216	230	-6.1%
2	377	247	52.6%
2X (*)		65	-100.0%
3	180	267	-32.6%
11	77	82	-6.1%
21	209	273	-23.4%
31	208	248	-16.1%
33	35	36	-2.8%
41	172	192	-10.4%
42	71	182	-61.0%
43	93	49	89.8%
51	185	196	-5.6%
52	234	270	-13.3%
53	207	236	-12.3%
70	18	21	-14.3%
TOTAL	2,282	2,594	-12.0%

(*)=Route which discontinued service in 2006.

Table 4

LAKETRAN
AVERAGE DAILY RIDERSHIP COMPARISON BETWEEN 2006 AND 2007
(by fixed route)

ROUTE #	2007 RIDERSHIP	2006 RIDERSHIP	% CHANGE FROM 2006
1	518	510	1.6%
2	270	277	-2.5%
3	264	256	3.1%
4	19	22	-13.6%
5	148	149	-0.7%
6	204	201	1.5%
10	377	359	5.0%
11	88	87	1.1%
12	253	288	-12.2%
13	41	39	5.1%
14	100	96	4.2%
TOTAL	2,282	2,284	-0.1%

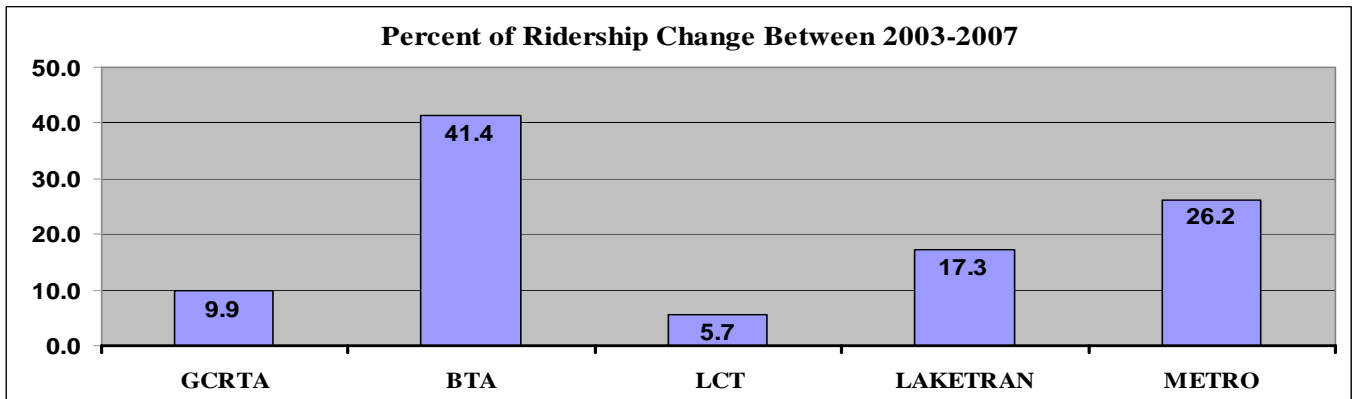
Table 5

AKRON, METRO (EXPRESS ROUTES TO CLEVELAND)
AVERAGE DAILY RIDERSHIP COMPARISON BETWEEN 2006 AND 2007
(by fixed route)

ROUTE #	2007 RIDERSHIP	2006 RIDERSHIP	% CHANGE FROM 2006
X-60	88	92	-4.3%
X-61	201	176	14.2%
TOTAL	289	268	7.8%

Ridership Changes Over 2003 and 2007

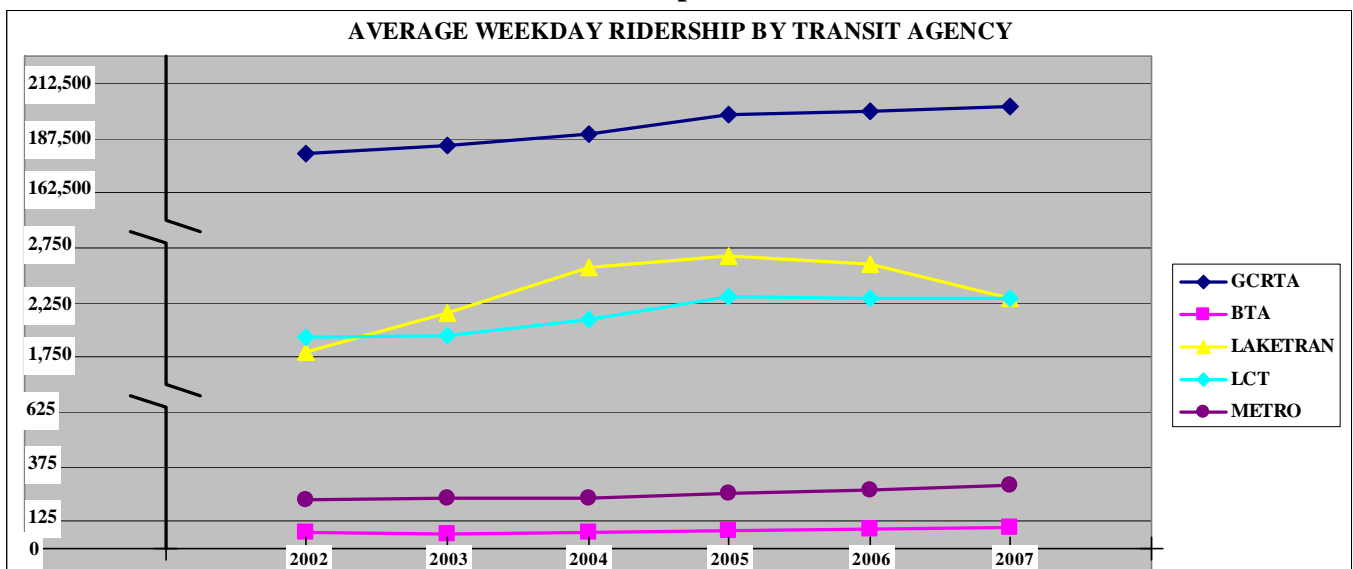
Graph 1



Even though some of the transit agencies have posted ridership losses for some of these years, graph 1 shows ridership increases over the five year period. GCRTA shows about a ten percent gain in ridership which is 18,195 new average daily riders. BTA experienced a 41.4 percent increase in ridership, which totals 29 new average daily riders. LCT’s 5.7 percent increase represents 123 new riders while LAKETRAN’s 17.3 percent increase resulted in 337 riders. AKRON’s METRO showed an approximate 26.2 percent increase, or 60 new average daily riders.

Graph 2 shows a five year average of weekday ridership by transit agency. Over those five years ridership by transit agency has steadily gone up, even though LCT experienced a 14.8 percent and LAKETRAN a 0.7 percent decline for two years each.

Graph 2



Following the Route Data Table and Average Weekday Ridership Comparison tables are five graphs (one for each transit system) showing monthly fixed route ridership comparisons between 2006 and 2007. The Akron METRO graph shows only ridership figures for the North Coast Express routes. These routes serve downtown Cleveland from Akron and other points in Summit and Portage Counties. These ridership graphs can be found on pages 23-27.

ROUTE DATA

ROUTE SCHEDULE DATE	OPERATOR ROUTE NUMBER	ROUTE CATEGORY	NOACA LINE NUMBER	AM/MIDDAY HEADWAYS	2007 NETWORK GUIDE DESCRIPTION - ROUTE/LINE	NUMBER OF WEEKDAY BUSES (IN BOTH DIRECTIONS)	2007 AVERAGE WEEKDAY RIDERSHIP
GCRTA ROUTES							
12/16/07	1	LR LR	1.1 1.2	18.4/30.1 15.1/26.7	(ST. CLAIR) EUCLID PARK-N-RIDE - WEST 3 rd / SUPERIOR ST. CLAIR / EAST 152 nd - WEST 3 rd / SUPERIOR	183	7,819
8/19/07	2	CF	2.1	21.5/38.4	(E.55th - E.79th) S. MARGINAL LAYOVER - ST. CLAIR / EAST 79 th (MAUD LOOP)	80	2,958
12/16/07	3	LR	3.1	12.1/15.2	(SUPERIOR) WINDERMERE RAPID STATION - W. PROSPECT / WEST 3 rd (Route #326 was split into routes #3 and #26) (Started service on December 16, 2007)	158	Ridership is included with #326
12/10/06	326	LR LR LR		24.4/28.1 30.0/71.0 21.0/29.6	(DETROIT - SUPERIOR) WESTGATE TRANSIT CENTER - EAST 129 th / ST. CLAIR ROCKY RIVER LOOP - EAST 129 th / ST. CLAIR WEST BLVD / CUDELL RAPID STATION - EAST 129 th / ST. CLAIR (Discontinued service on December 16, 2007)	192	13,445 Total includes ridership from routes 326, 3 & 26
12/16/07	4	LR	4.1	40.8/60.0	(WADE PARK) ST. CLAIR / EAST 129 th - TOWER CITY (at W. PROSPECT / WEST 3 rd)	56	1,220
12/16/07	5	CF CF	5.1 5.2	63.5/-- 60.0/60.0	(CHAGRIN) CHAGRIN FALLS (MAIN / RIVER) - WARRENSVILLE RAPID STATION (BLUE LINE) CHAGRIN / LANDER - WARRENSVILLE RAPID STATION (BLUE LINE)	54	1,068
8/19/07	6	LR	6.1	7.0/10.0	(EUCLID) WINDERMERE RAPID STATION - PUBLIC SQUARE (at SUPERIOR / W. ROADWAY)	237	10,284
12/10/06	7X	CF CF CF	7.1 7.2 7.3	123.0/60.0 30.0/-- 30.0/60.0	(MONTICELLO - EUCLID HTS) MAYFIELD / SOM LOOP - UNIVERSITY CIRCLE RAPID STATION MAYFIELD / SOM LOOP - W. PROSPECT / West 3 rd RICHMOND TOWN SQUARE - UNIVERSITY CIRCLE RAPID STATION (Some via ANDERSON RD)	52	846
12/16/07	8	LR	8.1	36.3/35.0	(CEDAR) UNIVERSITY CIRCLE RAPID STATION - TOWER CITY (at PROSPECT / WEST 3 rd)	68	1,604
8/19/07	9X	XF XF XF	9.1 9.2 9.3	17.2/35.0 60.0/-- 52.0/--	(MAYFIELD) MAYFIELD / SOM LOOP - W. PROSPECT / WEST 3 rd MAYFIELD / SOM LOOP - UNIVERSITY CIRCLE RAPID STATION MAYFIELD / RICHMOND - W. PROSPECT / West 3 rd (via RIDGEBURY)	85	3,046

ROUTE SCHEDULE DATE	OPERATOR ROUTE NUMBER	ROUTE CATEGORY	NOACA LINE NUMBER	AM/MIDDAY HEADWAYS	2007 NETWORK GUIDE DESCRIPTION - ROUTE/LINE	NUMBER OF WEEKDAY BUSES (IN BOTH DIRECTIONS)	2007 AVERAGE WEEKDAY RIDERSHIP
12/10/07	10	CF	10.2	10.8/18.1	(EAST 105 th) DUPONT LOOP - TURNEY / ELLA	182	6,931
12/16/07	11	LR	11.1	35.0/31.1	(QUINCY) SHAKER BLVD / M. L. K. BLVD - EAST 3 rd / ROCKWELL (Started service on December 16, 2007)	60	1,146
12/16/07	12	LR	12.1	60.0/60.0	(WOODLAND) BUCKEYE / SOUTH MORELAND - ROCKWELL / EAST 3 rd (Started service on December 16, 2007)	43	862
12/16/07	13	LR	13.1	62.0/60.0	(BUCKEYE) LARCHMERE / NORTH MORELAND - ROCKWELL / EAST 3 rd (Started service on December 16, 2007)	43	658
12/16/07	14	LR	14.1	16.3/14.3	(KINSMAN) VAN AKEN / WARRENSVILLE - LAKESIDE / EAST 6 th	140	8,001
12/16/07	15	LR LR LR	15.1 15.2 15.3	27.5/40.0 17.0/-- --/5.3	(UNION - HARVARD) COUNTRY LANE - LAKESIDE / EAST 6 th RANDALL PARK MALL - LAKESIDE / EAST 6 th WARRENSVILLE / BUTTERNUT - LAKESIDE / EAST 6 th	144	7,363
8/20/06	15F	XF		30.0/--	(WARRENSVILLE HTS. FLYER) COUNTRY LANE - TOWER CITY (VIA I-480 AND I-77) (Discontinued on December 16, 2007)	26	167
6/10/07	16	CF	16.1	23.6/15.5	(EAST 55 th) HARVARD GARAGE - WOODLAND / EAST 55 th	112	840
12/16/07	17	LR	17.1	22.0/--	(EAST 49 th - CANAL - ROCKSIDE) EAST 6 th / LAKESIDE - MINOFF INDUSTRIAL PARK	7	58
6/10/07	18	LR	18.1	30.0/--	(WEST 11 th - HINCKLEY) PEARL / BROADVIEW - SOUTHWEST ADULT ACTIVITY CENTER (Started service on June 10, 2007 and will replace route #20)	11	36
12/16/07	19	LR LR	19.1 19.2	15.0/-- 15.0/30.0	(BROADWAY - MILES) RANDALL PARK MALL - LAKESIDE / EAST 6 th FARGO LAYOVER - LAKESIDE / EAST 6 th	112	3,769
6/11/06	20	LR LR		37.0/-- 44.0/--	(WEST 11 th - BROADVIEW) WEST 33 rd LOOP - EAST 12 th / ROCKWELL BROADVIEW / PEARL - HINCKLEY INDUSTRIAL PARK (S.A.W. Inc.) (Discontinued on June 10, 2007 replaced by route #18)	16	2,451

ROUTE SCHEDULE DATE	OPERATOR ROUTE NUMBER	ROUTE CATEGORY	NOACA LINE NUMBER	AM/MIDDAY HEADWAYS	2007 NETWORK GUIDE DESCRIPTION - ROUTE/LINE	NUMBER OF WEEKDAY BUSES (IN BOTH DIRECTIONS)	2007 AVERAGE WEEKDAY RIDERSHIP
12/16/07	20A	LR LR LR	20.1 20.2 20.3	32.0/-- 55.0/59.5 60.0/59.6	(WEST 25 th - STATE) NORTH ROYALTON SERVICE YARD - EAST 12 th / ROCKWELL STATE / SPRAGUE - EAST 12 th / ROCKWELL PARMATOWN TRANSIT CENTER - EAST 12 th / ROCKWELL	78	2,682
6/10/07	20C	SS	20.4	--/60.0	(METROPARKS ZOO) EAST 3 rd / ROCKWELL - METROPARKS ZOO (Operates June 10, 2007 - August 19, 2007)	16	237
12/16/07	22	LR LR	21.1 21.2	12.7/15.0 15.0/--	(LORAIN AVE) WESTPARK RAPID STATION - EAST 12 th / ROCKWELL WESTPARK RAPID STATION - SUPERIOR / EAST ROADWAY	161	7,664
6/10/07	23	LR LR	22.1 22.2	24.3/48.3 --/60.0	(CLARK - RIDGE) PARMATOWN - EAST 12 th / ROCKWELL DENISON LOOP - EAST 12 th / ROCKWELL	76	1,905
12/16/07	24	LR	23.1	30.0/30.0	(VAN AKEN - TRI-C) WARRENSVILLE / VAN AKEN RAPID STATION - TRI-C EASTERN CAMPUS (Started service on December 16, 2007)	87	395
12/16/07	25	LR	24.1	30.0/60.0	(MADISON) WESTGATE TRANSIT CENTER - EAST 12 th / ROCKWELL	60	3,473
12/16/07	26	LR LR	25.1 25.2	29.0/30.0 26.3/27.1	(DETROIT) WESTGATE TRANSIT CENTER - PUBLIC SQUARE (SUPERIOR / E. ROADWAY) ROCKY RIVER LOOP - E. 12 th / ROCKWELL (Route #326 was split into routes #3 and #26) (Started service on December 16, 2007)	146	Ridership is included with # 326
8/19/07	27F	CF	26.1	60.0/--	(SOLON FLYER) TINKERS COURT - VAN AKEN / WARRENSVILLE	3	37
12/16/07	28	CF	27.1	13.0/14.7	(EAST 276 - EUCLID) EAST 276 th / TUNGSTEN - WINDERMERE RAPID STATION	169	5,602
8/19/07	30	CF	28.1	18.6/24.0	(EAST 140 th - HAYDEN) EAST 185 th / LAKESHORE - WINDERMERE RAPID STATION	84	2,376
8/19/07	32X	CF CF CF CF	29.1 29.2 29.3 29.4	132.0/30.0 60.0/60.0 30.0/-- 26.3/--	(CEDAR) MONTEFIORE HOME - UNIVERSITY CIRCLE RAPID STATION URSULINE COLLEGE - UNIVERSITY CIRCLE RAPID STATION MONTEFIORE HOME - W. PROSPECT / WEST 3 rd URSULINE COLLEGE - W. PROSPECT / WEST 3 rd	87	2,253
6/11/06	33	LR	30.1	60.0/60.0	(CENTRAL) CENTRAL / EAST 83 rd - TOWER CITY (W. PROSPECT / WEST 3 rd)	24	240

ROUTE SCHEDULE DATE	OPERATOR ROUTE NUMBER	ROUTE CATEGORY	NOACA LINE NUMBER	AM/MIDDAY HEADWAYS	2007 NETWORK GUIDE DESCRIPTION - ROUTE/LINE	NUMBER OF WEEKDAY BUSES (IN BOTH DIRECTIONS)	2007 AVERAGE WEEKDAY RIDERSHIP
8/19/07	34	CF	31.1	30.6/60.2	(EAST 200 th - GREEN) EAST 185 th / LAKESHORE - RANDALL PARK MALL	26	959
12/16/07	35	LR LR	32.1 32.2	45.3/59.8 41.359.8	(W. 25 TH - BROADVIEW) BROADVIEW HTS COMMUNITY CENTER - EAST 12 th / ROCKWELL GARFIELD MALL - EAST 12 th / ROCKWELL	75	4,635
8/20/07	36	CF	33.1	45.0/45.5	(EDDY) COIT / KIRBY - SUPERIOR RAPID STATION	46	346
8/19/07	37	CF	34.1	60.0/54.0	(EAST 185 th - TAYLOR) E. 185 th / LAKESHORE - CHAGRIN / EAST 159 th LOOP	64	1,669
12/16/07	38	LR	4.2	40.3/55.0	(HOUGH) ST. CLAIR / EAST 129 th - TOWER CITY (W. PROSPECT / WEST 3 rd)	46	1,018
12/16/07	39	XF XF XF	35.1 35.2 35.3	31.3/-- --/60.0 60.0/54.0	(LAKE SHORE BLVD.) LAKE SHORE / EAST 185 th - W. PROSPECT / WEST 3 rd (via BRATEN AHL) EUCLID PARK-N-RIDE - W. PROSPECT / WEST 3 rd (via BRATEN AHL) SHOREGATE TRANSIT CENTER - W. PROSPECT / WEST 3 rd (via BRATEN AHL)	73	2,231
6/11/06	39F	XF	35.4	16.3/--	(LAKE SHORE BLVD.) SHOREGATE TRANSIT CENTER - W. PROSPECT / WEST 3 rd (via I-90)	18	559
12/16/07	40	CF	36.1	37.5/40.0	(LAKEVIEW - LEE) SOUTHGATE TRANSIT CENTER - TAFT / EDDY	68	4,985
8/19/07	41	CF CF CF	37.1 37.2 37.3	39.3/40.0 120.0/39.9 40.0/--	(WARRENSVILLE) EMERALD VALLEY - WINDERMERE RAPID STATION (via AURORA) SOLON SQ. SHOPPING CTR - WINDERMERE RAPID STATION (via PERKINS) SOLON SQ. SHOPPING CTR - WINDERMERE RAPID STATION (via PERKINS-KIMBERLY)	107	5,008
8/20/06	42	CF	38.1	45.0/--	(FAIRMOUNT) FAIRMOUNT / GREEN - UNIVERSITY CIRCLE RAPID STATION	12	47
12/10/06	43	CF	39.1	--/60.0	(LAKE - WOLF) WESTLAKE PARK-N-RIDE - TRISKETT RAPID STATION	20	65
12/16/07	45Y/R 45R 45Y	LR LR	40.1 40.2	60.0/60.0 60.0/--	(RIDGE) NORTH ROYALTON SERVICE YARD - EAST 12 th / ROCKWELL PLEASANT LAKES / YORK - EAST 12 th / ROCKWELL	39	1,133
3/18/07	46	CF	41.1	38.0/--	(ROCKY RIVER - WESTLAKE) CROCKER PARK (MARKET / MAIN) - TRISKETT RAPID STATION	23	154

ROUTE SCHEDULE DATE	OPERATOR ROUTE NUMBER	ROUTE CATEGORY	NOACA LINE NUMBER	AM/MIDDAY HEADWAYS	2007 NETWORK GUIDE DESCRIPTION - ROUTE/LINE	NUMBER OF WEEKDAY BUSES (IN BOTH DIRECTIONS)	2007 AVERAGE WEEKDAY RIDERSHIP
12/16/07	47	DL	42.1	15.0/60.0	(MUNY LOT-PUBLIC SQ. LOOP) MUNY LOT - SUPERIOR / WEST ROADWAY	52	472
12/16/07	48,48A 48 48A	CF CF	43.1 43.2	22.1/33.8 19.9/38.9	(UNIVERSITY CIRCLE - EAST 131 st) MARYMOUNT HOSPITAL - CLEVELAND CLINIC EAST 177 th / SOUTH MILES - CLEVELAND CLINIC	152	3,546
12/16/07	49	CF	44.1	--/60.0	(CENTER RIDGE) ST. JOHN WEST SHORE HOSPITAL - TRISKETT RAPID STATION	42	273
12/10/06	49F	XF		30.0/--	(CENTER RIDGE) ST. JOHN WEST SHORE HOSPITAL - EUCLID / EAST 21 st (Discontinued service on December 16, 2007)	10	48
8/19/07	50	CF CF	45.1 45.2	31.4/33.3 41.0/--	(EAST 116 th - HARVARD - WEST 117 th) EAST 118 th LOOP - WEST 117 th / MADISON RAPID STATION EAST 118 th LOOP-WEST 117 th / MADISON RAPID STATION (via AMERICAN GREETINGS)	84	4,170
12/16/07	51F	XF	46.1	25.0/--	(DRAKE - HOWE) ROYALTON / PEARLVIEW - CSU (EAST 22 nd) (via STRONGSVILLE PARK-N-RIDE)	22	1,073
12/16/07	251	XF	46.2	42.5/--	(STRONGSVILLE PARK-AND-RIDE) STRONGSVILLE PARK-N-RIDE - CLEVELAND STATE UNIVERSITY	5	391
12/16/07	451	XF	46.3	30.0/--	(LAUREL SQUARE) LAUREL SQUARE - CLEVELAND STATE UNIVERSITY	6	291
8/19/07	51X	XF XF XF	47.1 47.2 47.3	--/40.0 25.0/-- 30.0/--	(PEARL) DRAKE / HOWE - CSU (EAST 22 nd) (via HOWE / ROYALTON) STRONGSVILLE PARK-N-RIDE - CLEVELAND STATE UNIVERSITY (EAST 22 nd) SOUTHLAND (PEARL / WEST 130 th) - CLEVELAND STATE UNIVERSITY (Some via SPRAGUE / LUCERNE & INCLUDES A RUN FROM TRI-C (WEST CAMPUS))	64	1,148
12/16/07	52	LR LR	48.1 48.2	30.0/30.0 30.0/--	(WESTGATE - WEST PARK) WESTGATE TRANSIT CENTER - WESTPARK RAPID STATION FAIRVIEW HOSPITAL - WESTPARK RAPID STATION (Started service on December 16, 2007)	79	911
6/11/06	55F	XF XF XF XF	49.1 49.2 49.3 49.4	48.5/-- 31.7/-- 45.0/-- 70.0/--	(WEST SHORE FLYER - 55F) LAKE / MOORE - EUCLID / EAST 21 st CAHOON / WOLF - EUCLID / EAST 21 st CROCKER PARK (MARKET AND MAIN) - EUCLID / EAST 21 st ROCKY RIVER LOOP - EUCLID / EAST 21 st	23	287

ROUTE SCHEDULE DATE	OPERATOR ROUTE NUMBER	ROUTE CATEGORY	NOACA LINE NUMBER	AM/MIDDAY HEADWAYS	2007 NETWORK GUIDE DESCRIPTION - ROUTE/LINE	NUMBER OF WEEKDAY BUSES (IN BOTH DIRECTIONS)	2007 AVERAGE WEEKDAY RIDERSHIP
12/16/07	55X	XF XF	50.1 50.2	25.5/60.0 24.8/--	(CLIFTON) WESTGATE TRANSIT CENTER - EAST 21 st / EUCLID WESTGATE TRANSIT CENTER - EAST 21 st / EUCLID (via LAKE / NICHOLSON)	80	2,240
6/29/06	57	DL		30.0/30.0	TOWER CITY - TRI-C LOOP TOWER CITY - EAST 30 th / COMMUNITY COLLEGE (Discontinued service in March 2007)	98	184
4/10/06	61	DL	51.1	10.0/10.0	E-LINE TROLLEY WEST 6 th / SUPERIOR AVE - EUCLID / EAST 22 nd	72	2,297
4/10/06	62	DL	52.1	10.0/10.0	B-LINE TROLLEY WEST 6 th / SUPERIOR AVE - EAST 12 th / LAKESIDE	72	1,237
12/16/07	66X	RAIL RAIL	53.1 53.2	15.3/15.0 15.0/--	(AIRPORT - WINDERMERE) (RED LINE) WINDERMERE RAPID STATION - CLEVELAND HOPKINS INTERNATIONAL AIRPORT BROOKPARK RAPID STATION - TOWER CITY	202	20,343
12/16/07	67X 67AX	RAIL RAIL RAIL RAIL	54.1 54.2 54.3 54.4	20.0/30.0 --/60.0 9.8/-- --/30.0	(VAN AKEN) (BLUE LINE) VAN AKEN / WARRENSVILLE CENTER - TOWER CITY VAN AKEN / WARRENSVILLE CENTER - SOUTH HARBOR (via WATERFRONT LINE) (SHAKER) (GREEN LINE) SHAKER / GREEN - TOWER CITY SHAKER / GREEN - SOUTH HARBOR (via WATERFRONT LINE)	241	11,014
6/5/05	68	CF CF	55.1 55.2	60.0/60.0 --/60.0	(BAGLEY) GREAT NORTHERN SHOPPING CENTER - PARMATOWN TRANSIT CENTER GREAT NORTHERN SHOP. CTR. - PARMATOWN TRANSIT CTR (via N. OLMSTED P-N-R)	28	310
8/6/07	70	CF	56.1	40.7/55.0	(BUNTS - WEST 150 th) SOUTHLAND SHOPPING CENTER - LAKEWOOD PARK	49	682
6/10/07	75X	XF XF XF	57.1 57.2 57.3	20.1/61.3 60.0/-- 60.0/60.0	(NORTH OLMSTED) COUNTY LINE - EAST 21 st / EUCLID LORAIN / BERKSHIRE / PORTER - EAST 21 st / EUCLID NORTH OLMSTED PARK-N-RIDE - EAST 21 st / EUCLID	86	2,294
8/19/07	76X/F 76X 76F	XF XF	58.1 58.2	30.0/60.0 30.0/--	(BROADWAY - TURNEY) SOUTHGATE TRANSIT CENTER - EAST 13 th / PAYNE (via BROADWAY) SOUTHGATE TRANSIT CENTER - EAST 13 th / PAYNE (via I-480 and I-77)	58	852
12/16/07	77F	XF XF	59.1 59.2	24.2/59.2 --/60.0	(BRECKSVILLE) SNOWVILLE / AMERITECH - ERIEVIEW (via BRECKSVILLE - SNOWVILLE) SNOWVILLE / AMERITECH - ERIEVIEW	50	1,621

ROUTE SCHEDULE DATE	OPERATOR ROUTE NUMBER	ROUTE CATEGORY	NOACA LINE NUMBER	AM/MIDDAY HEADWAYS	2007 NETWORK GUIDE DESCRIPTION - ROUTE/LINE	NUMBER OF WEEKDAY BUSES (IN BOTH DIRECTIONS)	2007 AVERAGE WEEKDAY RIDERSHIP
8/19/07	78	CF CF	60.1 60.2	45.0/-- 60.0/48.0	(WEST 98th - PURITAS) BROOKPARK RAPID STATION - WEST BLVD / CUDELL RAPID STATION NASA - WEST BLVD / CUDELL RAPID STATION	45	905
12/16/07	79A/B 79A 79B	LR LR	61.1 61.2	25.0/60.0 65.0/60.0	(FULTON) PARMATOWN TRANSIT CENTER - EAST 6 th / LAKESIDE BROOKPARK RAPID STATION - EAST 6 th / LAKESIDE	86	2,811
8/19/07	81	LR	62.1	26.2/30.0	(TREMONT - STORER) WEST BLVD / CUDELL RAPID STATION - LAKESIDE / EAST 6 th	84	1,972
8/20/06	83	CF	63.1	29.8/57.0	(WEST 130) SOUTHLAND SHOPPING CENTER - TRISKETT RAPID STATION	55	664
12/16/07	86	CF	64.1	35.2/60.0	(WARREN - BEREA) SPRAGUE AND FAIR PARK-N-RIDE - LAKEWOOD PARK	52	721
12/16/07	86F	XF	65.1	30.0/--	(BEREA - OLMSTED FALLS) SPRAGUE / USHER - EAST 18 th / PAYNE (via: FAIR ROAD PARK-N-RIDE)	6	49
12/10/06	87F	XF	66.1	24.0/--	(WESTWOOD - I-90) LORAIN / DOVER CENTER - EASY 21 st / EUCLID (via I-90)	8	131
6/11/06	88X	XF	67.1	30.0/60.0	(BROADWAY - NORTHFIELD) SOUTHGATE TRANSIT CENTER - E. 13 th / PAYNE (via MARYMOUNT HOSPITAL)	50	1,104
4/9/06	90F	XF XF	68.1 68.2	35.5/40.0 60.0/--	(BROADWAY - LIBBY) SUMMIT COUNTY LINE LOOP - PROSPECT / ONTARIO BUCKHORN / BALSAM - PROSPECT / ONTARIO	59	1,423
6/10/07	94	CF	69.1	60.0/60.0	(EAST 260th - RICHMOND) EAST 222 nd / LAKE SHORE - TRI - C (EASTERN CAMPUS)	34	796
12/10/06	96F	XF	70.1	32.0/--	(BUTTERNUT - HILLIARD (Via I-90)) LORAIN / DOVER CENTER - EAST 21 st / EUCLID	6	117
12/16/07	135	XF	71.1	16.7/--	(BROADVIEW - NORTH ROYALTON) N. ROYALTON SERVICE YARD - CSU / EAST 21 st (via 176, I-71, I-90)	14	394
6/10/07	145Y/R 145R 145R 145Y	LR LR LR	72.1 72.2 72.3	60.0/-- 30.0/-- --/60.0	(YORK FLYER) NORTH ROYALTON SERVICE YARD - EAST 12 th / ROCKWELL N. ROYALTON SERVICE YARD - E. 12 th / ROCKWELL (via TRI-C / PLEASEANT LAKES) PLEASANT LAKES / YORK - EAST 12 th / ROCKWELL	44	731
12/16/07	239	XF	73.1	30.0/--	(EUCLID PARK-AND-RIDE FLYER) EAST 222 nd / LAKESHORE - W. PROSPECT / EAST 3 rd	11	385

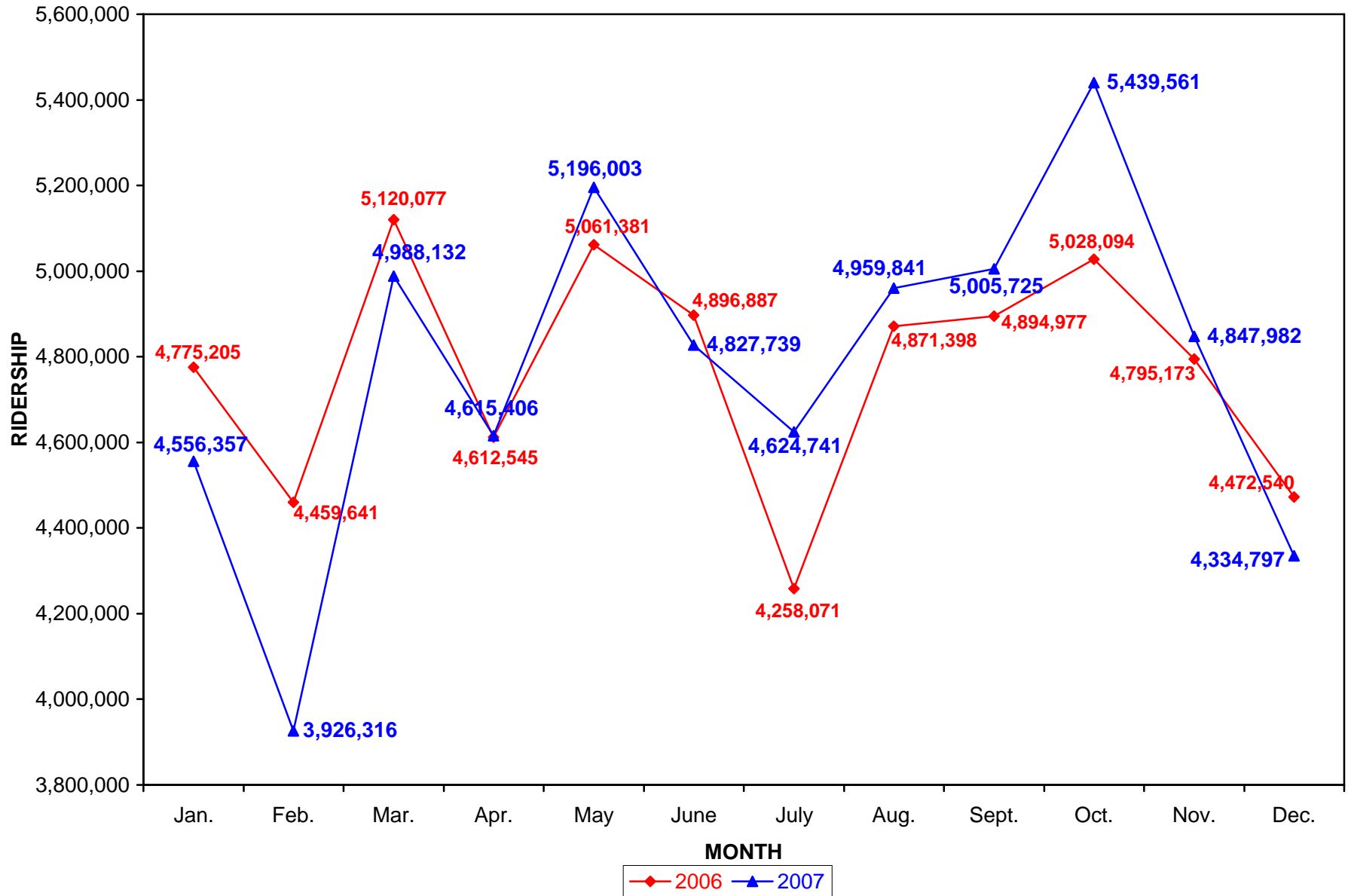
ROUTE SCHEDULE DATE	OPERATOR NUMBER	ROUTE CATEGORY	NOACA LINE NUMBER	AM/MIDDAY HEADWAYS	2007 NETWORK GUIDE DESCRIPTION - ROUTE/LINE	NUMBER OF WEEKDAY BUSES (IN BOTH DIRECTIONS)	2007 AVERAGE WEEKDAY RIDERSHIP
3/18/07	246	XF XF	74.1 74.2	12.5/-- 48.0/--	(WESTLAKE PARK-N-RIDE FLYER) WESTLAKE PARK-N-RIDE - E.12 th / ST. CLAIR ST. JOHNS WEST SHORE HOSPITAL - E. 12 th / ST. CLAIR (via WESTLAKE PARK-N-RIDE)	30	1,042
6/10/07	263	XF XF XF	75.1 75.2 75.3	31.0/-- 35.0/-- 28.0/--	(NORTH OLMSTED PARK-AND-RIDE) COUNTY LINE - EAST 14 th / PROSPCT (via NORTH OLMSTED PARK-N-RIDE) BUTTERNUT RIDGE / GREAT NORTHERN BLVD - EAST 14 th / PROSPECT NORTH OLMSTED PARK-N-RIDE - EAST 14 th / PROSPECT	27	786
5/26/07	441	SS	89.1	60.0/60.0	(GEAUGA LAKE) VAN AKEN RAPID STATION (BLUE LINE) - GEAUGA LAKE (Operates May 26, 2007 - August 26, 2007)	33	450
8/19/07	801	CC	76.1	30.0/30.0	(LEE - HARVARD COMMUNITY CIRCULATOR) CORLETT EAST 130 th BUS LOOP (via LEE-HARVARD, WALDEN, E. 154 th , KINSMAN / E. 140 th , CORLETT, E. 130 th LOOP)	54	562
8/19/07	802	CC	77.1	45.0/45.0	(SOUTHEAST COMMUNITY CIRCULATOR) (via MARYMOUNT HOSPITAL, CITYVIEW SHOP.CTR., GARFIELD MALL, DUNHAM / CORRIDON, ROCKSIDE / BROADWAY, SOUTHGATE TRANSIT CTR, RANDALL MALL)	44	554
4/9/06	803	CC	78.1	35.0/46.7	(ST.CLAIR - HOUGH COMMUNITY CIRCULATOR) MAUD LOOP (via CRAWFORD / WADE PARK, EAST 79 th / EUCLID, EAST 55 th / LEXINGTON, EAST 30 th / SUPERIOR, EAST 55 th / ST. CLAIR)	46	554
8/19/07	804	CC	79.1	30.0/36.9	(LAKEWOOD COMMUNITY CIRCULATOR) WEST 117 th RAPID TRANSIT LOOP (via EDGEWATER, LAKE, DETROIT, MADISON)	80	1,660
6/11/06	805	CC	80.1	30.0/30.0	(SLAVIC VILLAGE COMMUNITY CIRCULATOR) (via EAST 71 st / WAR, EAST 71 st / HARVARD, EAST 65 th / BROADWAY, PERSHING / BROADWAY HYACINTH PARK (EAST 65 th / NEWMAN))	61	444
6/10/07	806	CC CC	81.1 81.2	60.0/60.0 60.0/60.0	(EUCLID - EUCLID BEACH COMMUNITY CIRCULATOR) TUNGSTEN / EAST 276 th - EAST 191 st / EUCLID TUNGSTEN / EAST 276 th - EUCLID BEACH	56	1,010
6/10/07	807	CC	82.1	30.4/30.2	(TREMONT COMMUNITY CIRCULATOR) DENISON LOOP - LAKEVIEW TERRACE	62	1,126
8/28/05	808	CC	83.1	60.0/60.0	(WESTSHORE COMMUNITY CIRCULATOR) WESTGATE TRANSIT CENTER (IN FAIRVIEW PARK) LOOP (via DETROIT / CLAGUE, WESTLAKE P-N-R, DETROIT / DOVER, MARKET / MAIN, WOLF / BASSETT, CLAGUE / WOLF)	23	140

ROUTE SCHEDULE DATE	OPERATOR ROUTE NUMBER	ROUTE CATEGORY	NOACA LINE NUMBER	AM/MIDDAY HEADWAYS	2007 NETWORK GUIDE DESCRIPTION - ROUTE/LINE	NUMBER OF WEEKDAY BUSES (IN BOTH DIRECTIONS)	2007 AVERAGE WEEKDAY RIDERSHIP
8/19/07	809	CC	84.1	45.0/45.0	(KAMM'S - PURITAS COMMUNITY CIRCULATOR) WEST PARK RAPID STATION LOOP (via BELLAIRE GARDENS, WEST 140 th / PURITAS, PURITAS RTS, ROCKY RIVER DR. / PARKMOUNT, FAIRVIEW GENERAL HOSPITAL, MUNN / ROCKY RIVER DR.)	39	949
8/19/07	820	CC	85.1	46.5/45.0	(ST. CLAIR - FIVE POINTS COMMUNITY CIRCULATOR) EAST 191 st / EUCLID - DUPONT LOOP	36	539
12/10/06	821	CC	86.1	30.0/30.0	(UNIVERSITY CIRCLE / HEIGHTS AREA COMMUNITY CIRCULATOR) UNIVERSITY CIRCLE RTS - COVENTRY / EUCLID HEIGHT - SEVERANCE TOWN SQ.	50	219
8/28/05	822	CC	87.1	60.0/60.0	(SOUTH WEST CIRCULATOR) CROCKER PARK (MARKET AND MAIN) - WESTGATE TRANSIT CENTER	20	109
12/10/06	823	CC	88.1	30.0/30.0	COVENTRY - SHAKER SQUARE CIRCULATOR COVENTRY VILLAGE AT EUCLID HTS / LANCASTER - SHAKER SQUARE (Discontinued service on December 16, 2007)	50	56
BRUNSWICK TRANSIT ALTERNATIVE (BTA)							
2/1/06	1	CC	100.1	60.0/60.0	(NORTH ROUTE) K-MART LOOP (NORTH)	13	41
2/1/06	2	CC	101.1	60.0/60.0	(SOUTH ROUTE) K-MART LOOP (SOUTH)	13	58
LORAIN COUNTY TRANSIT (LCT)							
5/1/07	1	LF	200.1	60.0/60.0	(LORAIN - ELYRIA, via WASHINGTON) MERIDIAN PLAZA - TRANSFER POINT (via WASHINGTON / 20 th , HOMEWOOD / CLINTON)	31	216
5/1/07	2	LF	201.1	60.0/60.0	(LORAIN - ELYRIA, via BROADWAY) MERIDIAN PLAZA - TRANSFER POINT (via BROADWAY / 20 th , PALM / FAIRLESS)	34	377
5/1/07	3	LF	202.1	60.0/80.0	(SHEFFIELD LAKE - ABBE ROAD) MERIDIAN PLAZA - TRANSFER POINT (via KANSAS / CREHORE, ROOT / COLORADO, LAKE / ABBE, RT254 / ABBE, LCCC)	19	180
5/1/07	11	LF	203.1	60.0/60.0	(NORTH RIDGEVILLE - CENTER RIDGE) TRANSFER POINT - GCRTA CONNECTION (via W. RIVER / MARKET SQUARE, CENTER RIDGE / JAYCOX)	26	77

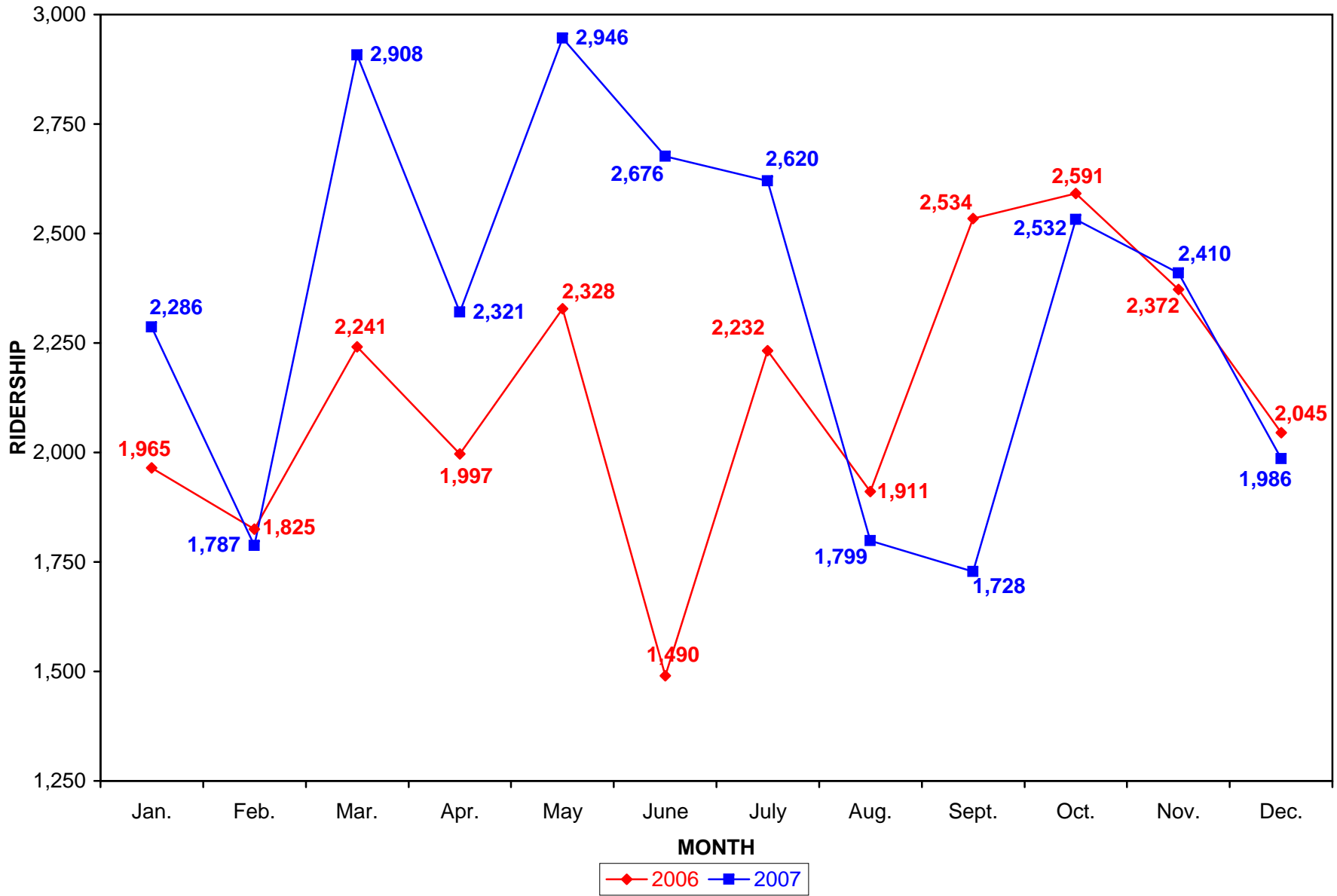
ROUTE SCHEDULE DATE	OPERATOR ROUTE NUMBER	ROUTE CATEGORY	NOACA LINE NUMBER	AM/MIDDAY HEADWAYS	2007 NETWORK GUIDE DESCRIPTION - ROUTE/LINE	NUMBER OF WEEKDAY BUSES (IN BOTH DIRECTIONS)	2007 AVERAGE WEEKDAY RIDERSHIP
5/1/07	21	LF	204.1	60.0/60.0	(OBERLIN - WELLINGTON) MAIN ST / HERRICK AVE (WELLINGTON) - TRANSFER POINT (via LAKE / CHESNUT, ELYRIA OBERLIN / WEST, EAST / BROAD)	23	209
5/1/07	31	LF	205.1	60.0/60.0	(NORTH RIDGE ROAD - COOPER FOSTER PARK) (SUPER K-MART - TRANSFER POINT)	32	208
8/27/07	33	LF	206.1	60.0/150.0	(CLEVELAND HOPKINS AIRPORT EXPRESS) OBERLIN - CLEVELAND HOPKINS AIRPORT - OBERLIN (via HADAWAY PARK-N-RIDE)	7	35
5/1/07	41	LF	207.1	120.0/120.0	(OBERLIN AVENUE) MERIDIAN PLAZA - SUPER K-MART	16	172
5/1/07	42	LF	208.1	--/120.0	(WEST ERIE) MERIDIAN PLAZA LOOP (via COMMUNITY HEALTH PARTNERS, SUPER K-MART)	16	71
5/1/7	43	LF	209.1	60.0/60.0	(CENTRAL - WEST LORAIN) MERIDIAN PLAZA LOOP	13	93
5/1/07	51	LF	210.1	60.0/60.0	(EAST ELYRIA - BROAD STREET LOOP) TRANSFER POINT LOOP (via EMH, GIANT EAGLE, LCCC)	14	185
5/1/07	52	LF	211.1	60.0/60.0	(EAST ELYRIA - ABBE ROAD LOOP) TRANSFER POINT LOOP	16	234
5/1/07	53	LF	212.1	60.0/60.0	(WEST ELYRIA - WEST RIDGE ROAD LOOP) TRANSFER POINT LOOP	17	207
5/1/07	70	LF	213.1	60.0/--	(WESTLAKE EXPRESS) MIDWAY MALL (TRANSFER POINT) - WESTLAKE PARK-N-RIDE LOT (via RT 83 PARK-N-RIDE LOT)	6	18
LAKETRAN							
12/1/06	1	LF	300.1	60.0/60.0	(PAINESVILLE - MENTOR - LAKELAND COLLEGE) COUNTY ADMINISTRATION BUILDING - LAKELAND COMMUNITY COLLEGE	32	518
12/1/06	2	LF	301.1	60.0/60.0	(MENTOR - WILLOUGHBY - WICKLIFFE - EUCLID) GREAT LAKES MALL - LLOYD / LAKELAND (via EUCLID / MENTOR)	28	270
12/1/06	3	LF	302.1	60.0/60.0	(GREAT LAKES MALL - LAKELAND COLLEGE - MENTOR - WICKLIFFE) GREAT LAKES MALL - LLOYD / LAKELAND (via LAKESHORE)	28	264

ROUTE SCHEDULE DATE	OPERATOR ROUTE NUMBER	ROUTE CATEGORY	NOACA LINE NUMBER	AM/MIDDAY HEADWAYS	2007 NETWORK GUIDE DESCRIPTION - ROUTE/LINE	NUMBER OF WEEKDAY BUSES (IN BOTH DIRECTIONS)	2007 AVERAGE WEEKDAY RIDERSHIP
2/1/06	4	LF	303.1	60.0/60.0	(MADISON - PAINESVILLE) DOCK / LAKE - CHASE BANK (PAINESVILLE)	5	19
1/26/06	5	CC	304.1	60.0/60.0	(FAIRPORT CIRCULATOR) COUNTY ADMINISTRATION BUILDING LOOP (via CHESTER / STATE, STATE / ELM, 3 rd / HIGH, NEW / EAST, JACKSON / STATE)	15	148
		CC	304.2	60.0/60.0	(PAINESVILLE CIRCULATOR) COUNTY ADMINISTRATION BUILDING LOOP (via LAKE EAST HOSPITAL, EAST WALNUT, SOUTH STATE, BANK / LIBERTY, LIBERTY / SOUTH, ERIE)	14	
12/1/06	6	LF	305.1	60.0/60.0	(WILLOUGHBY HILLS - WILLOWICK - MENTOR) LAKELAND COMMUNITY COLLEGE - SHOPS OF WILLOUGHBY HILLS (via VINE)	28	204
5/29/07	10	XF	306.1	18.3/--	(MARKET STREET PARK-AND-RIDE) PAINESVILLE TWP & MARKET STREET PARK-N-RIDES - EAST 9 th / LAKESIDE	14	377
3/1/07	11	XF	307.1	20.0/--	(MADISON - LAKELAND PARK-AND-RIDE) MADISON P-N-R (I-90/SR-528) - EAST 9 th / LAKESIDE (via LAKELAND COLLEGE)	5	88
9/1/07	12	XF	308.1	25.0/--	(WILLOWICK & WICKLIFFE PARK-N-RIDE) PAINESVILLE P-N-R - SUPERIOR / EAST ROADWAY (PUBIC SQ.)	16	253
5/29/07	13	XF	309.1	60.0/--	(WICKLIFFE - WILLOUGHBY HILLS COMMUTER) MENTOR P-N-R - LORAIN / WEST 30 th (SOME TRIPS GO TO THE NEAR WESTSIDE)	2	41
3/1/07	14	XF	310.1	50.0/--	(EASTLAKE STADIUM PARK-N-RIDE) EASTLAKE PARK-AND-RIDE - EAST 22 nd / CHESTER (CSU)	6	100
AKRON, METRO							
8/26/07	X-60	XF	400.1	40.0/--	(CHAPEL HILL - CLEVELAND) CHAPEL HILL MALL - SUPERIOR / EAST 13 th	5	88
8/26/07	X-61	XF	401.1	16.0/--	(MONTROSE - CLEVELAND) MAIN PLACE - SUPERIOR / EAST 13 th	10	201

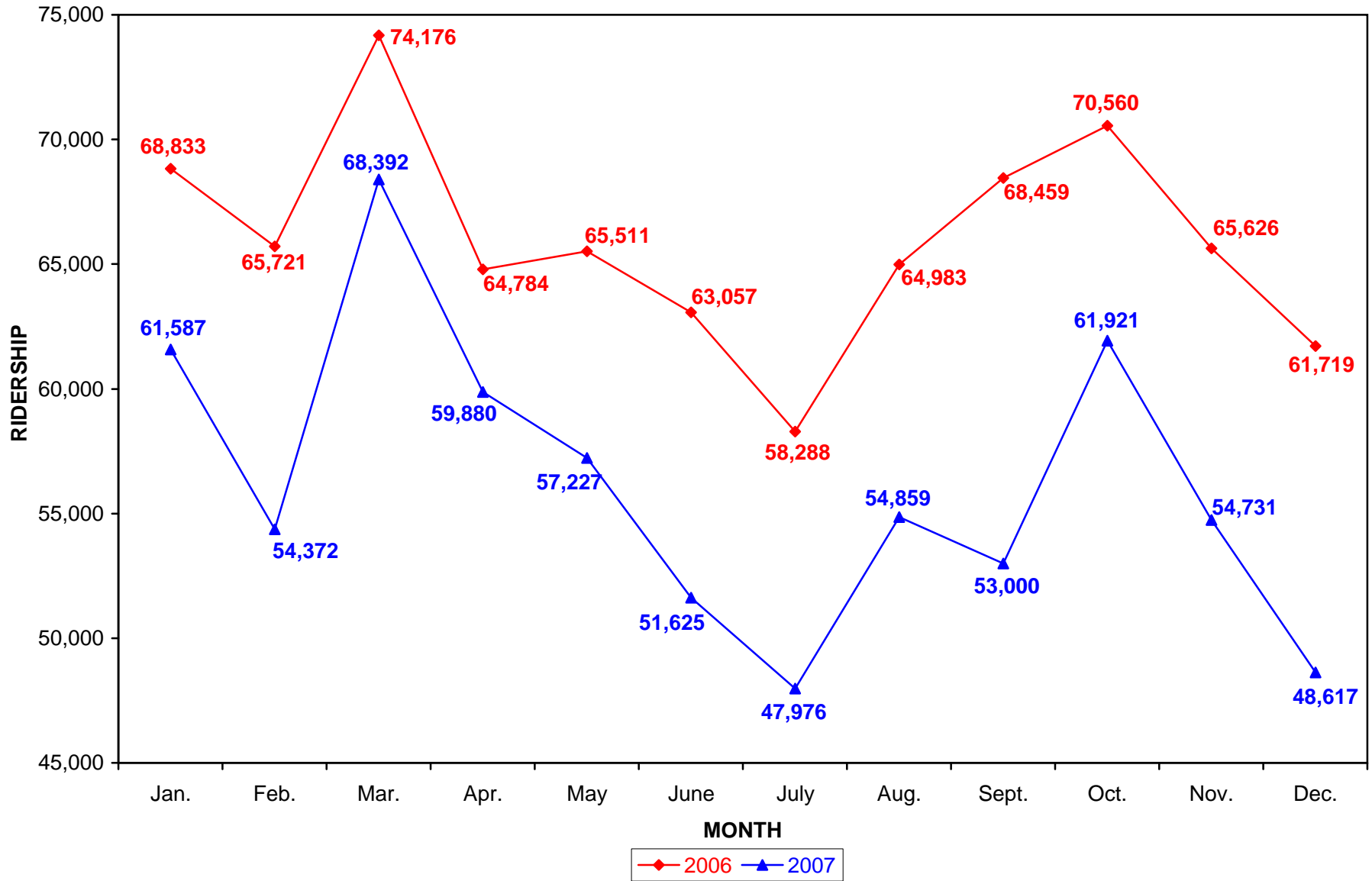
Graph 3
Greater Cleveland Regional Transit Authority (GCRTA)
Monthly Ridership Comparison (Between 2006 - 2007)



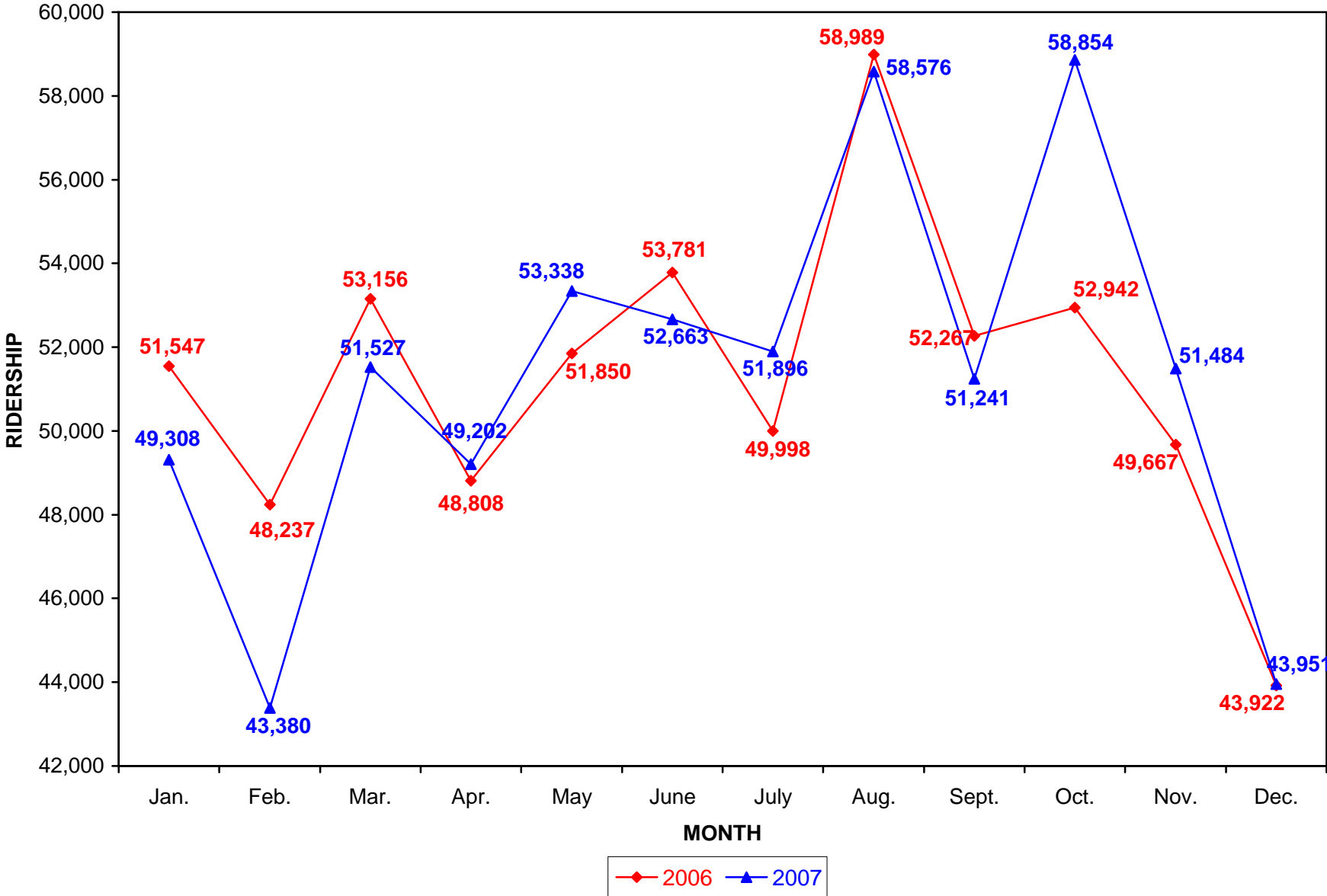
Graph 4
Brunswick Transit Alternative (BTA)
Monthly Ridership Comparison (Between 2006 - 2007)



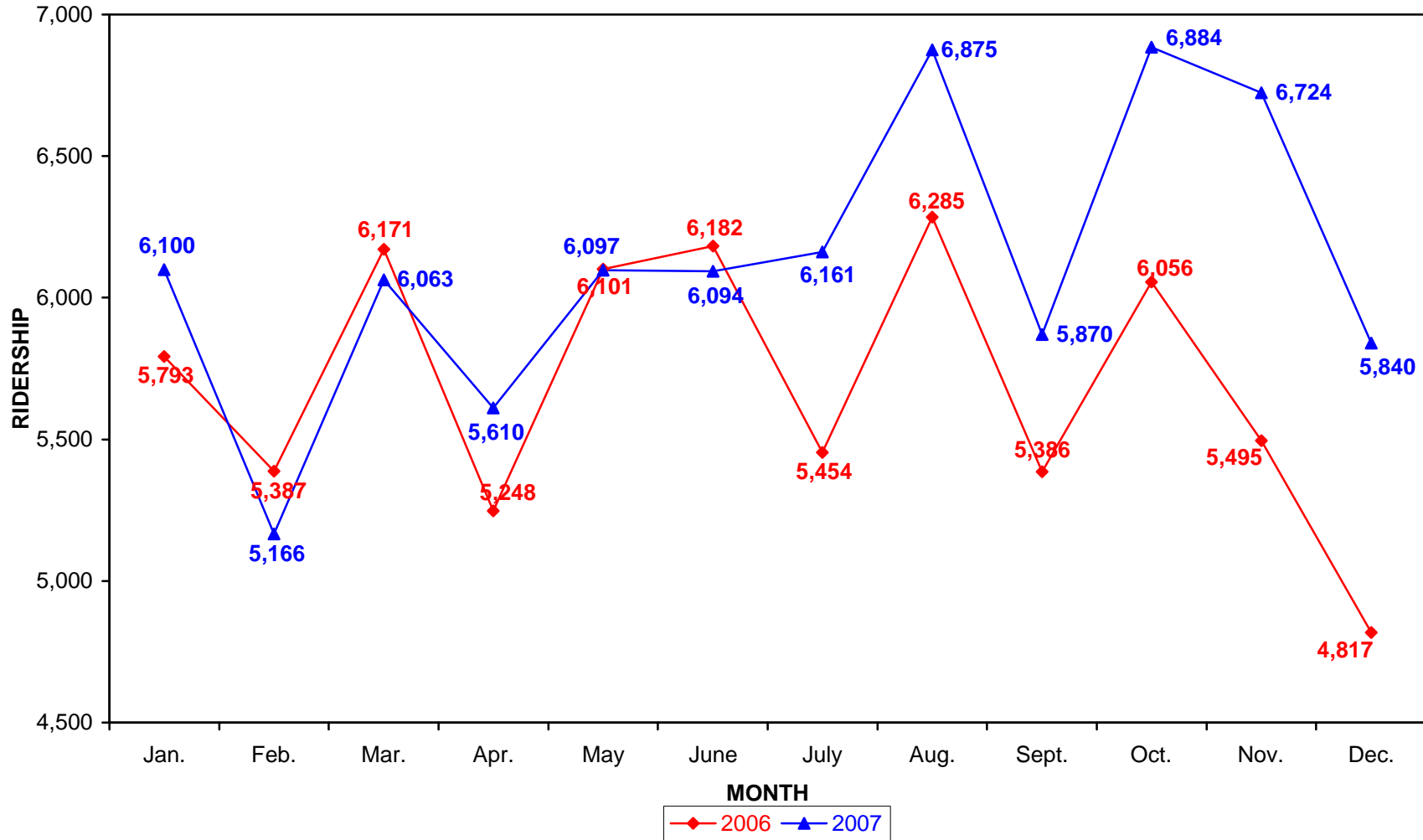
Graph 5
Lorain County Transit
Monthly Ridership Comparison (Between 2006 - 2007)



**Graph 6
LAKETRAN
Monthly Ridership Comparison (Between 2006 - 2007)**



Graph 7
METRO's (North Coast Express Only)
Regional Transit Authority Serving Summit County
Monthly Ridership Comparison (Between 2006 - 2007)



2008 PARK-N-RIDE LOT SURVEYS

As part of the fiscal year 2008 Overall Work Program, NOACA completed a survey of all 50 Park-N-Ride lots in the NOACA region. The purpose of this survey was to inventory the number of parking lot spaces and count the vehicles in each lot at the time of the inventory.

Staff conducted surveys in the spring of 2008. The lots were surveyed after the morning peak (9:30 a.m.) and before 3:00 p.m. with a total of 50 Park-N-Ride lots (39 operated or serviced by GCRTA, nine by LAKETRAN and two by LCT) surveyed. A count of parked vehicles was completed for each of the 50 lots. These counts were done once at each location. NOACA staff attempted to perform counts on a typical weekday. Mondays and Fridays were avoided.

The total number of parking spaces in GCRTA's 39 lots was 8,105, and the total number of parked vehicles at the time of the survey was 4,532. LAKETRAN has nine lots with a total of 994 parking spaces and an average of 435 parked vehicles and LCT has two lots, 78 parking spaces and 16 parked vehicles. The following data sheet displays counted spaces/parked vehicles and the percent occupied for each lot broken down by lot type (i.e., bus, light rail and heavy rail) from the 2008 Park-N-Ride Surveys. Information on page 29 and 30 shows the time, date each Park-N-Ride lot was surveyed and previous count information. The map on page 31 displays the vehicle counts by lot in the NOACA region.

The following is a summary of the 2008 Park-N-Ride Lot Survey:

- The NOACA region has 50 transit Park-N-Ride lots with 9,177 parking spaces.
- Lots along heavy rail (Red Line) account for 44 percent of the region's Park-N-Ride parking spaces; light rail (Blue and Green Lines) accounts for 18 percent; and the remaining 38 percent are bus Park-N-Ride lots.
- LAKETRAN added a new Park-N-Ride lot in Willowick at St. Mary Magdalene Church on Vine Street in 2008.

- GCRTA expanded an existing North Olmsted Park-N-Ride lot to 500 spaces and has future plans to add 200 spaces to its Westlake Park-N-Ride lot.
- GCRTA also completed construction at the West117th - Madison Rapid Transit Station which decreased the total spaces from 175 in 2005 to 146 in 2008.
- Park-N-Ride lots for GCRTA buses and trains and LAKETRAN buses all experienced an increase in parked vehicles from 2007 to 2008. LCT went from 10 parked vehicles in 2007 to 8 parked vehicles in 2008. Overall, there were 287 more parked vehicles counted in 2008 than in 2007.
- GCRTA accounts for over 78 percent of the Park-N-Ride lots and over 88 percent of the parking spaces (39 lots and 8,105 spaces).
- The Park-N-Ride lots along the heavy rail (Red Line) had a 49 percent occupancy rate; light rail (Blue and Green Line) had a 59 percent rate and Park-N-Ride lots serving bus routes for GCRTA, LCT and LAKETRAN had a 57 percent rate.
- GCRTA bus Park-N-Ride lots had a 1.8 percent increase in the occupancy rate when compared with 2007 data, while GCRTA rail Park-N-Ride lots had a 0.7 percent increase.
- The LAKETRAN Park-N-Ride lots almost all showed increases in usage compared to 2007 data.
- The largest GCRTA increases in Park-N-Ride usage were in both bus and rail lots on the outskirts of Cuyahoga County (Westlake, N. Olmsted, Strongsville, Brookpark and Green Roads Rapid Transit Station).
- Both GCRTA and LAKETRAN have increased the number of spaces at some Park-N-Ride lots and have added new locations over the last few years which make the percentages look smaller.

Table 6

2008 PARK-AND-RIDE INVENTORY

LOCATION/COMMUNITY	OPERATOR	2001 Vehicle Count	2002 Vehicle Count	2003 Vehicle Count	2004 Vehicle Count	2005 Vehicle Count	2006 Vehicle Count	2007 Vehicle Count	2008 Vehicle Count	*NUMBER OF SPACES	2008 PERCENT OCCUPIED
N.OLMSTED (GREAT NORTHERN MALL)**	GCRTA	66	64								N/A
N.OLMSTED P-N-R (I-480/GREAT NORTHERN BLVD)	GCRTA			258	306	288	347	269	363	500	72.60%
WESTLAKE P-N-R (SPERRY ROAD)	GCRTA	396	422	461	431	428	496	493	530	562	94.31%
EUCLID TRANSIT CENTER (ST.CLAIR/BABBITT)	GCRTA	182	167	165	149	134	153	160	125	309	40.45%
STRONGSVILLE P-N-R (PEARL/I-71/OHIO TURNPIKE)	GCRTA	340	323	331	351	369	357	366	425	650	65.38%
FAIR LOOP P-N-R (SPRAGUE/FAIR RD)	GCRTA	23	20	17	16	13	13	9	11	45	24.44%
CLAGUE ROAD P-N-R (CLAGUE/LAKE)	GCRTA	26	30	19	22	13	18	20	18	40	45.00%
ST.CLAIR LOOP (E. 129th./ ST.CLAIR)	GCRTA	0	1	2	1	1	1	0	0	24	0.00%
LAUREL SQ. SHOPPING CTR.	GCRTA	36	29	35	33	15	17	25	20	50	40.00%
EASTGATE SHOPPING CENTER (US322/SR91)	GCRTA	1	4	7	2	3	3	6	6	28	21.43%
SOUTHGATE TRANSIT CENTER (WARRENSVILLE)	GCRTA	0	13	4	18	24	27	30	27	28	96.43%
RANDALL PARK MALL	GCRTA	12	19	23	30	22	23	14	0	110	0.00%
EAST 131st. / MILES	GCRTA	0	3	4	3	2	5	2	1	16	6.25%
EAST 130th. / CORLETT	GCRTA	1	1	3	1	2	0	0	0	20	0.00%
WHITE CASTLE (PEARL/BROOKPARK)	GCRTA	10	15	11	9	10	10	10	10	10	100.00%
OLON P-N-R (PORTZ PARKWAY)***	GCRTA	30	27	32	32						N/A
PARMATOWN TRANSIT CENTER (DAY DR)	GCRTA							12	42	52	80.77%
TOTAL BUS (GCRTA)		1,123	1,138	1,372	1,404	1,324	1,470	1,416	1,578	2,444	64.57%
MENTOR CIVIC CENTER**	LAKETRAN	86	83								N/A
MARKET ST. (MENTOR) P-N-R	LAKETRAN			139	163	183	176	196	227	286	79.37%
LAKELAND COMMUNITY COLLEGE (I-90/SR 306)***	LAKETRAN	23	28	23	21	27	50	29	16		N/A
SHOPS AT WILLOUGHBY HILLS P-N-R (US6 & SR84)***	LAKETRAN	12	7	0	11	7	6	0	0		N/A
SHOREGATE SHOPPING CENTER (SR283/E.305th)***	LAKETRAN	12	18	20	10	9	15	10	20		N/A
LLOYD ROAD (WICKLIFFE) P-N-R (LLOYD & LAKELAND)	LAKETRAN	67	81	94	84	93	106	71	114	143	79.72%
WATERTOWER DR (MADISON) P-N-R (I-90/SR-528)	LAKETRAN		10	8	9	26	44	39	43	175	24.57%
CLASSIC PARK (EASTLAKE) P-N-R (I-90/SR91)	LAKETRAN					31	67	58		147	0.00%
ST. MARY MAGDALENE (WILLOWICK) P-N-R (VINE ST.)	LAKETRAN								11	147	7.48%
PAINESVILLE P-N-R (LAKESHORE BLVD/TEMPLE)	LAKETRAN							4	4	96	4.17%
TOTAL LAKETRAN		200	227	284	298	376	464	407	435	994	43.76%
LCT P-N-R (HADAWAY ST)	LCT	0	0	0	0	0	0	0	0	55	0.00%
AVON P-N-R (RT 83/CHESTER)	LCT							10	8	23	34.78%
TOTAL LCT		0	0	0	0	0	0	10	8	78	10.26%
TOTAL BUS (OTHER)		1,323	1,365	1,656	1,702	1,700	1,934	1,833	2,021	3,516	57.48%
GREEN RD.RTS - LIGHT RAIL	GCRTA	522	486	483	430	421	482	466	508	820	61.95%
WARRENSVILLE RTS - LIGHT RAIL	GCRTA	94	75	70	78	94	97	93	99	112	88.39%
FARNSLEIGH RTS - LIGHT RAIL	GCRTA	89	73	63	57	65	73	50	52	140	37.14%
LYNNFIELD RTS - LIGHT RAIL	GCRTA	108	83	86	88	77	67	76	68	157	43.31%
KENMORE RTS - LIGHT RAIL	GCRTA	33	36	31	35	28	28	23	35	50	70.00%
AVALON RTS - LIGHT RAIL	GCRTA	68	59	56	54	54	50	51	40	95	42.11%
ASHBY RTS - LIGHT RAIL	GCRTA	31	26	20	24	22	14	19	24	29	82.76%
ONAWAY RTS - LIGHT RAIL	GCRTA	28	26	24	22	22	24	22	28	28	100.00%
SOUTHINGTON RTS - LIGHT RAIL	GCRTA	25	25	25	15	17	19	14	24	25	96.00%
S.WOODLAND RTS - LIGHT RAIL	GCRTA	75	50	32	27	23	29	27	20	74	27.03%
DREXMORE RTS - LIGHT RAIL	GCRTA	65	68	58	43	54	58	50	54	65	83.08%
WOODHILL RTS - LIGHT RAIL	GCRTA	60	51	54	38	47	45	23	32	60	53.33%
TOTAL LIGHT RAIL (GCRTA)		1,198	1,058	1,002	911	924	986	914	984	1,655	59.46%
EAST 55th. RTS - LIGHT/HEAVY RAIL	GCRTA	50	0	0	8	16	24	31	27	43	62.79%
WINDERMERE (STOKES) RTS - HEAVY RAIL	GCRTA	240	214	241	189	203	195	181	192	410	46.83%
SUPERIOR RTS - HEAVY RAIL	GCRTA	59	55	43	50	42	32	23	30	91	32.97%
WEST 65th. RTS - HEAVY RAIL	GCRTA					8	16	8	11	21	52.38%
WEST BLVD/CUDELL RTS - HEAVY RAIL	GCRTA	117	100	92	72	80	120	93	66	112	58.93%
WEST 117th. / MADISON RTS - HEAVY RAIL	GCRTA	159	147	139	104	133		27	134	146	91.78%
TRISKETT RTS - HEAVY RAIL	GCRTA	324	286	298	237	270	324	331	317	669	47.38%
WESTPARK RTS - HEAVY RAIL	GCRTA	245	197	185	174	147	185	155	144	351	41.03%
PURITAS / W.150th RTS - HEAVY RAIL	GCRTA	400	363	328	288	276	277	289	247	558	44.27%
BROOKPARK RTS - HEAVY RAIL	GCRTA	820	662	388	345	359	441	489	498	1,283	38.82%
BROOKPARK RTS (WEST) - HEAVY RAIL	GCRTA				304	311	292	288	304	322	94.41%
TOTAL HEAVY RAIL (GCRTA)		2,414	2,024	1,714	1,771	1,845	1,906	1,915	1,970	4,006	49.18%
GCRTA GRAND TOTAL		4,735	4,220	4,088	4,086	4,093	4,362	4,245	4,532	8,105	55.92%
GRAND TOTAL		4,935	4,447	4,372	4,384	4,469	4,826	4,662	4,975	9,177	54.21%

* The total number of spaces has changed from year to year with additions and new lots.

** The P-N-R lot has been moved to a new location.

*** P-N-R lots in most shopping center lots do not have defined number of spaces and are unable to determine P-N-R vehicles from others vehicles in lot.

GCRTA's West 117th /Madison RTS finished construction with a total of 146 spaces.

GCRTA's N.Olmsted P-N-R was expanded by a 190 spaces to 500 spaces total since 2007.

LakeTrans opened a new Willowick P-N-R at St. Mary Magdalene Church on Vine St. with space for 147 cars.

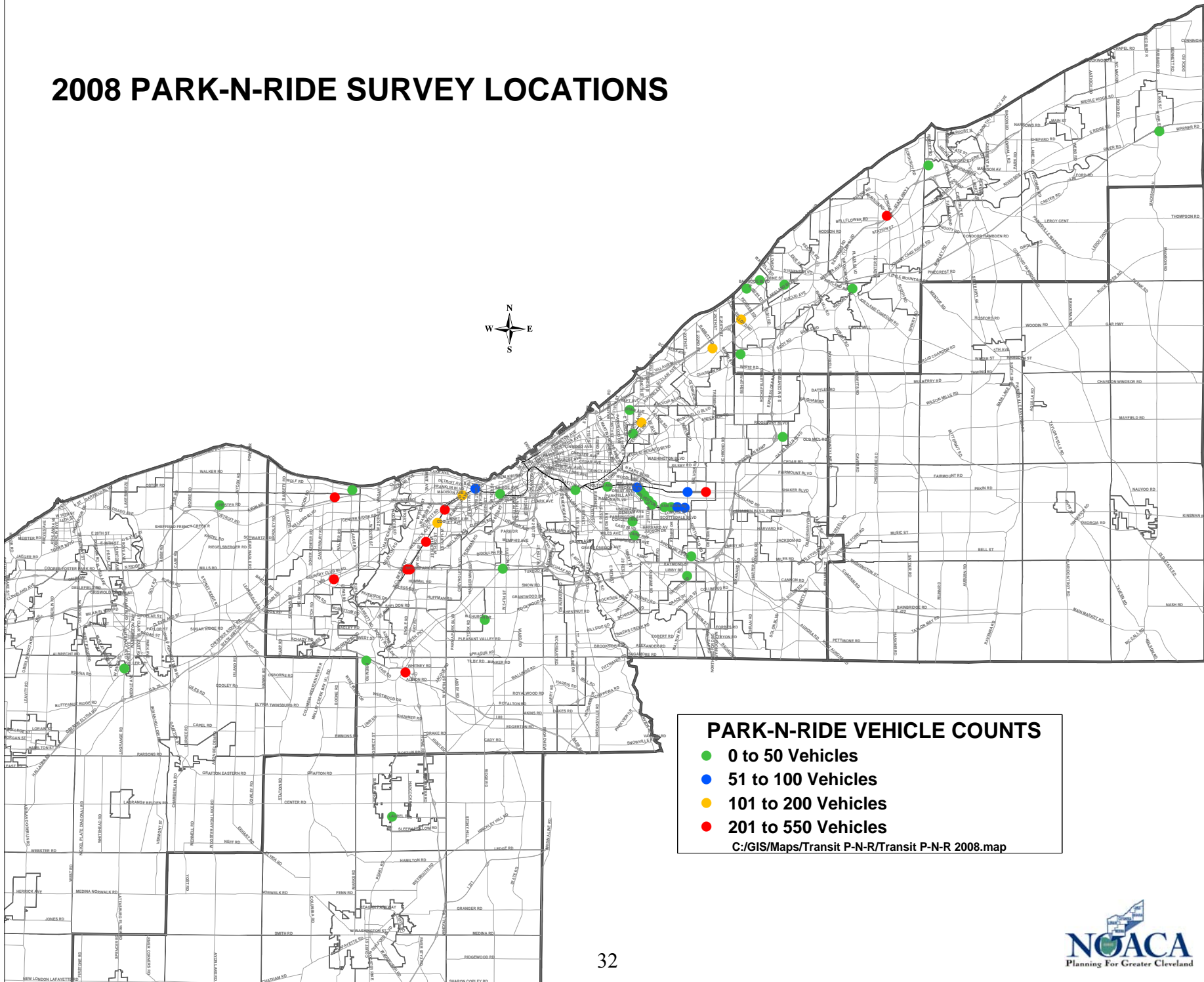
Table 7
2008 PARK-N-RIDE SURVEY LOG RECORDS

	<u>DATE</u>	<u>TIME OF DAY</u>	<u>LOCATION</u>	<u>OPERATOR</u>	<u>TYPE OF LOT</u>	<u>NUMBER OF VEHICLES</u>
1	May 13,2008	10:50 AM	St. Clair Loop (E.129th/St.Clair)	GCRTA	Paved/Lighted	0
2	May 13,2008	10:35 AM	Superior RTS	GCRTA	Paved/Lighted	30
3	May 13,2008	10:40 AM	Windermere (Stokes) RTS	GCRTA	Paved/Lighted	192
4	April 30, 2008	9:50 AM	Euclid Transit Center	GCRTA	Paved/Lighted	125
5	April 30, 2008	10:10 AM	Shops at Willoughby Hills P-N-R	LAKETRAN	Paved/Lighted	0
6	April 30, 2008	10:20 AM	Lakeland Community College	LAKETRAN	Paved/Lighted	16
7	April 30, 2008	10:50 AM	Watertower Dr (Madison) P-N-R	LAKETRAN	Paved/Lighted	43
8	April 30, 2008	1:00 PM	Painesville P-N-R	LAKETRAN	Paved/Lighted	4
9	April 30, 2008	1:15 PM	Market St (Mentor) P-N-R	LAKETRAN	Paved/Lighted	227
10	April 30, 2008	1:25 PM	Classic Park (Eastlake) P-N-R	LAKETRAN	Paved/Lighted	**
	April 30, 2008	1:30 PM	St. Mary Magdalene P-N-R	LAKETRAN	Paved/Lighted	11
11	April 30, 2008	1:40 PM	Shoregate Shopping Center	LAKETRAN	Paved/Lighted	20
12	April 30, 2008	1:50 PM	Lloyd Rd. P-N-R	LAKETRAN	Paved/Lighted	114
13	May 21, 2009	11:45 AM	Eastgate Shopping Center	GCRTA	Paved/Lighted	6
14	May 21, 2009	10:55 AM	East 131st/Miles P-N-R	GCRTA	Paved/Lighted	1
15	May 21, 2009	10:30 AM	East 130th/Corlett	GCRTA	Paved/Lighted	0
16	May 21, 2009	10:45 AM	Randall Park Mall P-N-R	GCRTA	Paved/Lighted	0
17	May 21, 2009	11:00 AM	Southgate P-N-R	GCRTA	Paved/Lighted	27
18	June 26, 2007	1:20 PM	Solon P-N-R	GCRTA	Paved/Lighted	*
19	May 13,2008	11:30 AM	Warrensville RTS	GCRTA	Paved/Lighted	99
20	May 13,2008	11:25 PM	Green Rd. RTS	GCRTA	Paved/Lighted	508
21	May 13,2008	1:10 PM	Farnsleigh RTS	GCRTA	Paved/Lighted	52
22	May 13,2008	1:10 PM	Lynnfield RTS	GCRTA	Paved/Lighted	68
23	May 13,2008	1:10 PM	Kenmore RTS	GCRTA	Paved/Lighted	35
24	May 13,2008	1:10 PM	Avalon RTS	GCRTA	Paved/Lighted	40
25	May 13,2008	1:10 PM	Ashby RTS	GCRTA	Paved/Lighted	24
26	May 13,2008	1:10 PM	Onaway RTS	GCRTA	Paved/Lighted	28
27	May 13,2008	1:10 PM	Southington RTS	GCRTA	Paved/Lighted	24
28	May 13,2008	1:10 PM	South Woodland RTS	GCRTA	Paved/Lighted	20
29	May 13,2008	1:10 PM	Drexmore RTS	GCRTA	Paved/Lighted	54
30	May 13,2008	1:25 PM	Woodhill RTS	GCRTA	Paved/Lighted	32
31	May 13, 2008	1:30 PM	East 55th RTS	GCRTA	Paved/Lighted	27
32	April 23, 2008	9:55 AM	West 65th RTS	GCRTA	Paved/Lighted	11
33	April 23, 2008	10:00 AM	West Blvd./Cudell RTS	GCRTA	Paved/Lighted	66
34	April 23, 2008	10:05 AM	West 117th RTS	GCRTA	Paved/Lighted	134
35	April 23, 2008	10:15 AM	Triskett RTS	GCRTA	Paved/Lighted	317
36	April 23, 2008	11:05 AM	Westpark RTS	GCRTA	Paved/Lighted	144
37	April 23, 2008	10:55 AM	Puritas/West 150th RTS	GCRTA	Paved/Lighted	247
38-a	April 23, 2008	11:35 AM	Brookpark RTS	GCRTA	Paved/Lighted	498
38-b	April 23, 2008	11:30 AM	Brookpark RTS West	GCRTA	Paved/Lighted	304
39	May 21, 2009	12:00 PM	Laurel Square Shopping Center	GCRTA	Paved/Lighted	20
40	May 21, 2009	1:10 PM	Strongsville P-N-R	GCRTA	Paved/Lighted	425
41	May 21, 2009	11:30 PM	Fair Loop P-N-R	GCRTA	Paved/Lighted	11
42	April 23, 2008	12:10 PM	North Olmsted P-N-R	GCRTA	Paved/Lighted	363
43	April 23, 2008	2:30 PM	Westlake P-N-R	GCRTA	Paved/Lighted	530
44	April 23, 2008	2:35 PM	Clague Road P-N-R	GCRTA	Paved/Lighted	18
45	April 23, 2008	2:20 PM	Avon P-N-R	LCT	Paved/Lighted	8
46	April 23, 2008	1:00 PM	LCT P-N-R (Hadaway St.)	LCT	Paved/Lighted	0
47	June 28, 2007	12:00 PM	White Castle (Pearl/Brookpark)	GCRTA	Paved/Lighted	10
48	June 28, 2007	12:30 PM	Paramatown Transit Center	GCRTA	Paved/Lighted	12

* Couldn't differentiate P-N-R vehicles from rest of lot

** Baseball Game

2008 PARK-N-RIDE SURVEY LOCATIONS



PARK-N-RIDE VEHICLE COUNTS

- 0 to 50 Vehicles
- 51 to 100 Vehicles
- 101 to 200 Vehicles
- 201 to 550 Vehicles

C:/GIS/Maps/Transit P-N-R/Transit P-N-R 2008.map

Conclusion

While there have been ridership losses for two of the five years between 2002 and 2007 at LAKETRAN and Lorain County Transit, the overall trend for the five-year period has been an increase in transit ridership from 5.7 percent for LCT to 41.4 percent for BTA. The combined ridership for all five transit agencies considered in this report was 2,529 more riders in 2007 over 2006.

Park-N-Ride lots, belonging to GCRTA, LAKETRAN, and LCT, also showed an overall increase in occupied spaces from 2007 to 2008: 4,662 in 2007 to 4,975 in 2008. This includes lots for buses and trains. LCT had a decrease, but it only had ten parked vehicles in 2007 and went down to eight in 2008.

The gains in ridership and occupied spaces in the region's Park-N-Ride lots might reflect the higher recent gas prices and/or the increasing concern on the part of the public about the environment, but it will take more time to see if this is a long-term trend. Although it is beyond the scope of this report to delve into planning issues, NOACA has goals and strategies in its long range plan, Connections 2030, to work with local transit agencies to increase transit use in the region. Unfortunately, while transit ridership is reported to be increasing all over the country, the NOACA region's major transit agency is experiencing severe fiscal problems due to the higher gas prices and a major reduction in funds received from the state. These may mean large cuts in service and significantly higher cost to use transit; this in turn could result in a loss of ridership. NOACA should look for ways to safeguard the health of the region's transit agencies.