

Census 2010

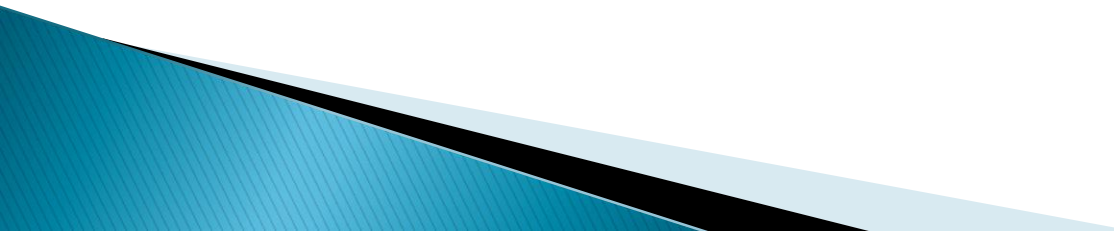
NOACA Region

Governing Board Meeting, May 13, 2011

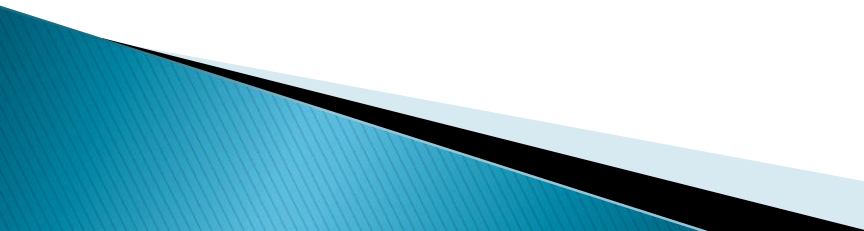


United States
Census
2010
IT'S IN OUR HANDS

NOACA's Use of Census Data

- ▶ Input for Decision Makers in Planning Programs
 - Current Planning Programs
 - Short-Range Planning
 - Long-Range Comprehensive Planning
 - ▶ Input for Socioeconomic Projections
 - Transportation Demand Forecasting Model
 - Air Quality Conformity
 - Environmental Justice Analysis
- 

Census, Estimation & Projection

- ▶ **Census** is a head count survey of population every 10 years
 - ▶ **Population Estimation:** method of assessing current or historical population numbers using existing data or survey samples
 - ▶ **Population Projection:** method of forecasting future populations based on past trends
- 

Data Release Dates

Release Dates	Data Products
March 2011 (released)	Census 2010 Redistricting Data (P.L. 94-171): Total Population at the Census Block Level
May 2011	Census 2010 Demographic File for Selected Population and Housing
June - August 2011	Summary File 1 (S.F. 1): Population & Race
December 2011	Summary File 2 (S.F. 2): Population & Housing by Race
End of 2012	ODOD Population Projections (2015 – 2040) at the County Level

Historical Census

City/County	Census 1960	Census 1970	Census 1980	Census 1990	Census 2000	Census 2010
Cleveland	876,050	750,903	575,773	505,616	478,403	396,815
<i>(Cleveland/Cuyahoga)</i>	<i>53%</i>	<i>44%</i>	<i>38%</i>	<i>36%</i>	<i>34%</i>	<i>31%</i>
<i>(% Cleveland/ Region)</i>	<i>41%</i>	<i>32%</i>	<i>26%</i>	<i>24%</i>	<i>22%</i>	<i>19%</i>
Cuyahoga	1,647,895	1,720,835	1,498,400	1,412,140	1,393,845	1,280,122
<i>(% Cuyahoga/Region)</i>	<i>77%</i>	<i>74%</i>	<i>69%</i>	<i>67%</i>	<i>65%</i>	<i>62%</i>
Geauga	47,573	62,977	74,474	81,129	90,895	93,389
Lake	148,700	197,200	212,801	215,499	227,511	230,041
Lorain	217,500	256,843	274,909	271,126	284,664	301,356
Medina	65,315	82,717	113,150	122,354	151,095	172,332
Total 5 County Region	2,126,983	2,320,572	2,173,734	2,102,248	2,148,010	2,077,240

Converting Population to TAZ

- ▶ What is Traffic Analysis Zone (TAZ)?
 - Geographic areas of relatively similar land use & land activity
 - Zones represent the *origins & destination* of travel activity within the region

- ▶ Why do we use TAZ?
 - Is primary unit of analysis in travel demand model
 - Contains socioeconomic data
 - Reflects future development

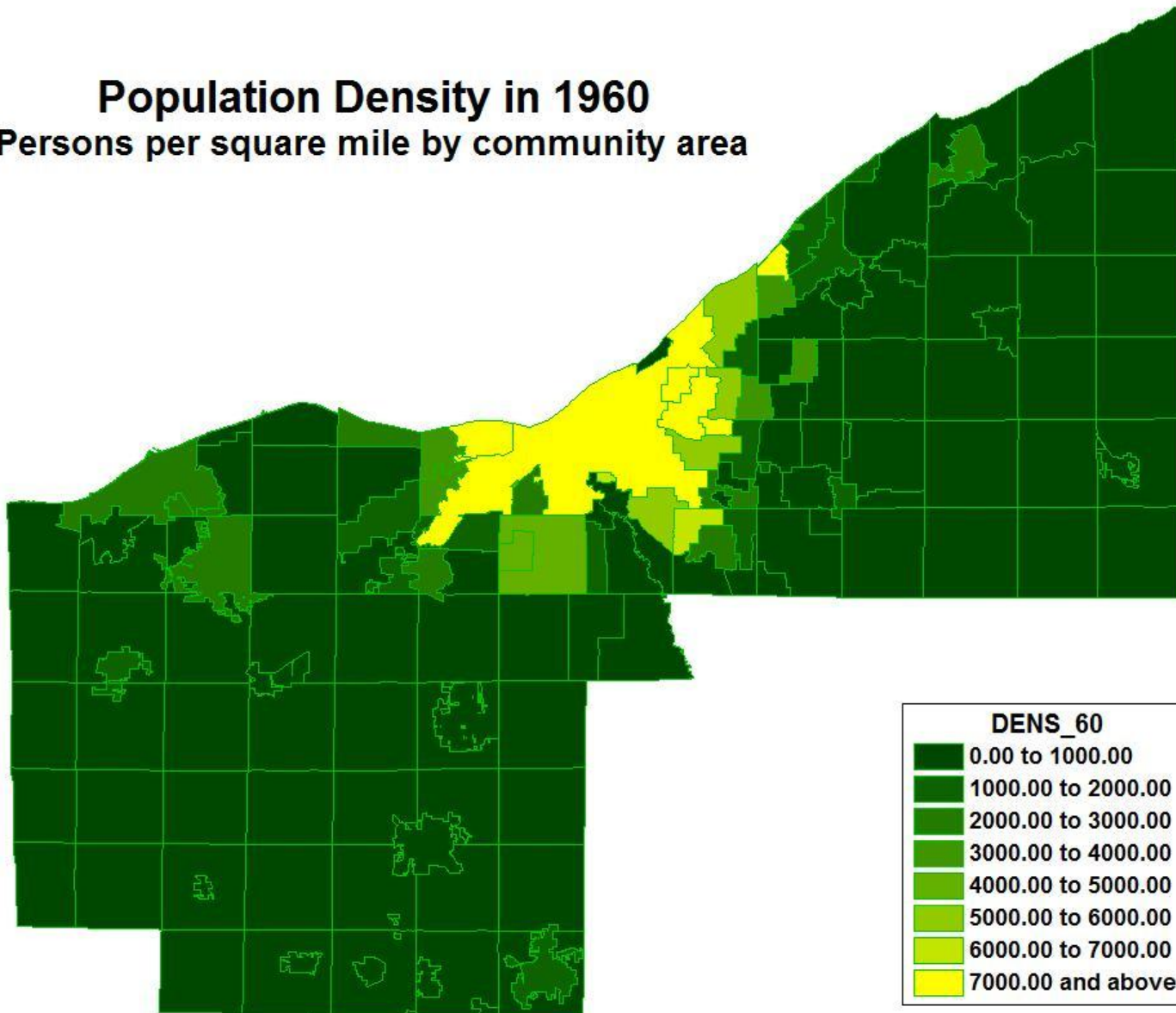
Census & ODOD Projections

COUNTY	CENSUS 2000	CENSUS 2010	ODOD 2000 Projection for 2010	ODOD 2000 Projection for 2020	ODOD 2000 Projection for 2030	ODOD 2000 Projection for 2040
CUYAHOGA	1,393,978	1,280,122	1,332,544	1,301,868	1,274,016	1,255,432
GEAUGA	90,895	93,389	98,820	104,813	109,181	113,030
LAKE	227,511	230,041	233,889	234,524	232,345	231,834
LORAIN	284,664	301,356	290,839	299,631	312,543	320,366
MEDINA	151,095	172,332	173,758	191,850	206,774	220,078
REGION	2,148,143	2,077,240	2,129,850	2,132,687	2,134,859	2,140,739

Projection by Ohio Department of Development (ODOD) based on Census 2000 (revised date: 01/21/2011)

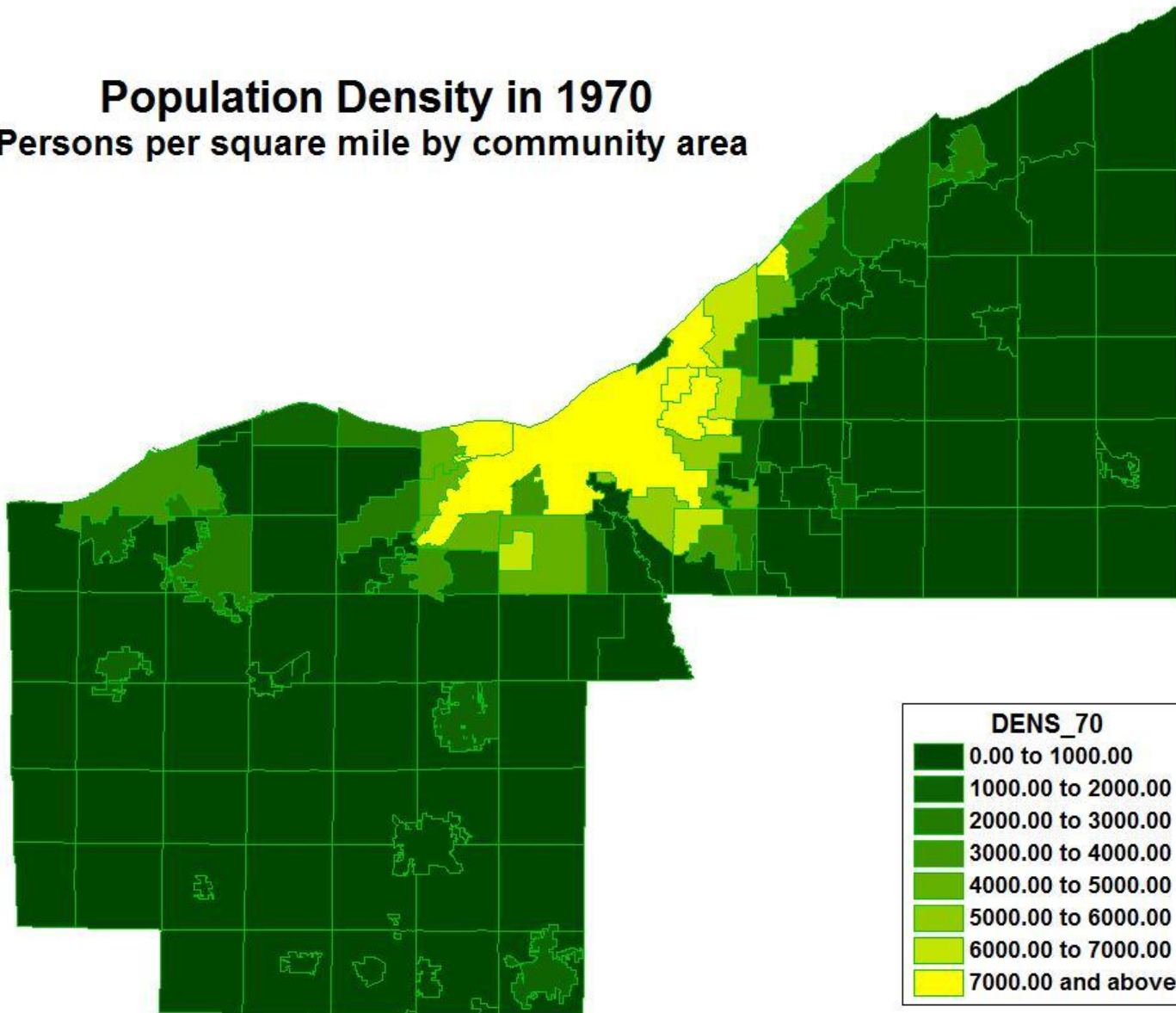
Population Density in 1960

Persons per square mile by community area



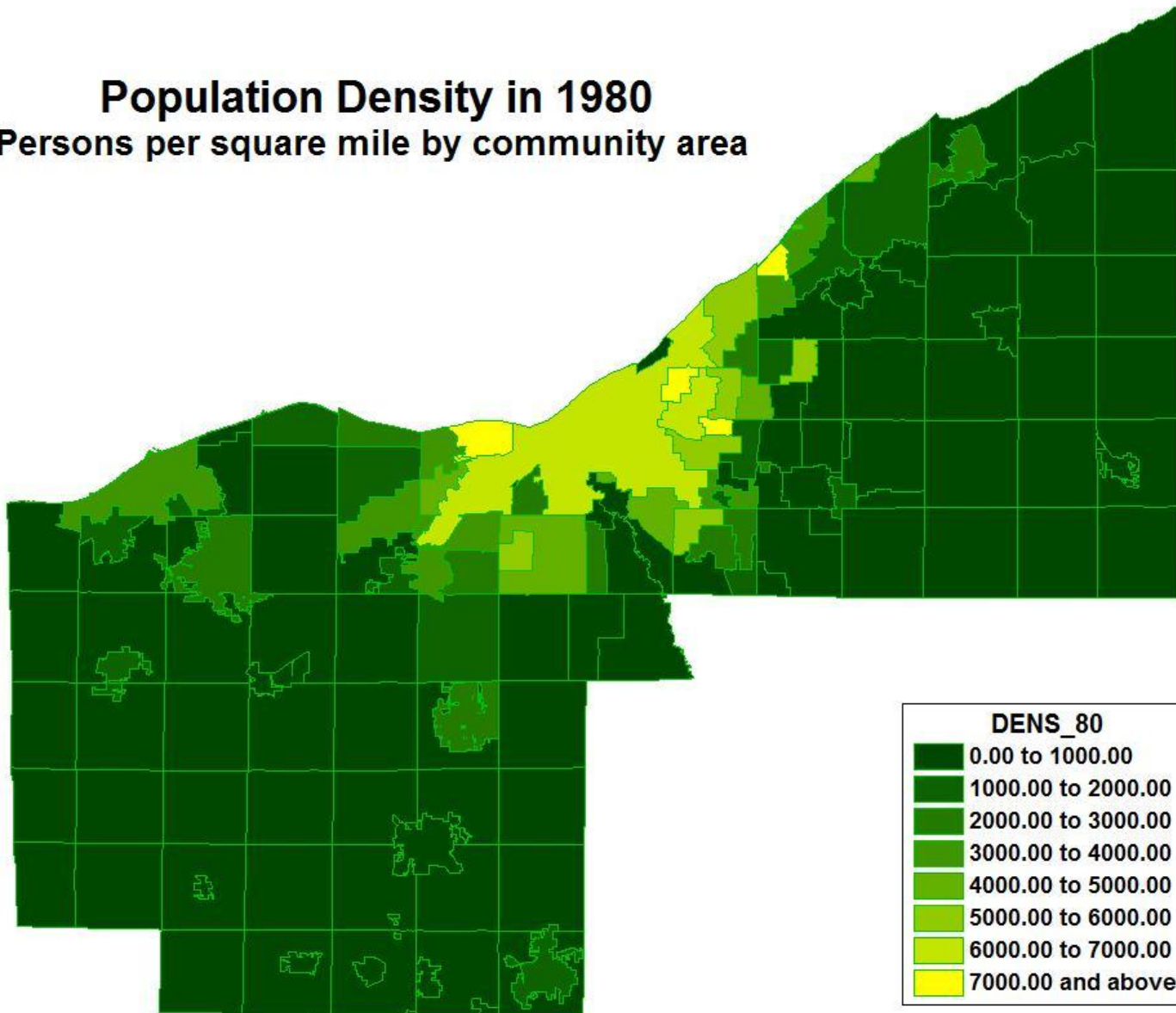
Population Density in 1970

Persons per square mile by community area



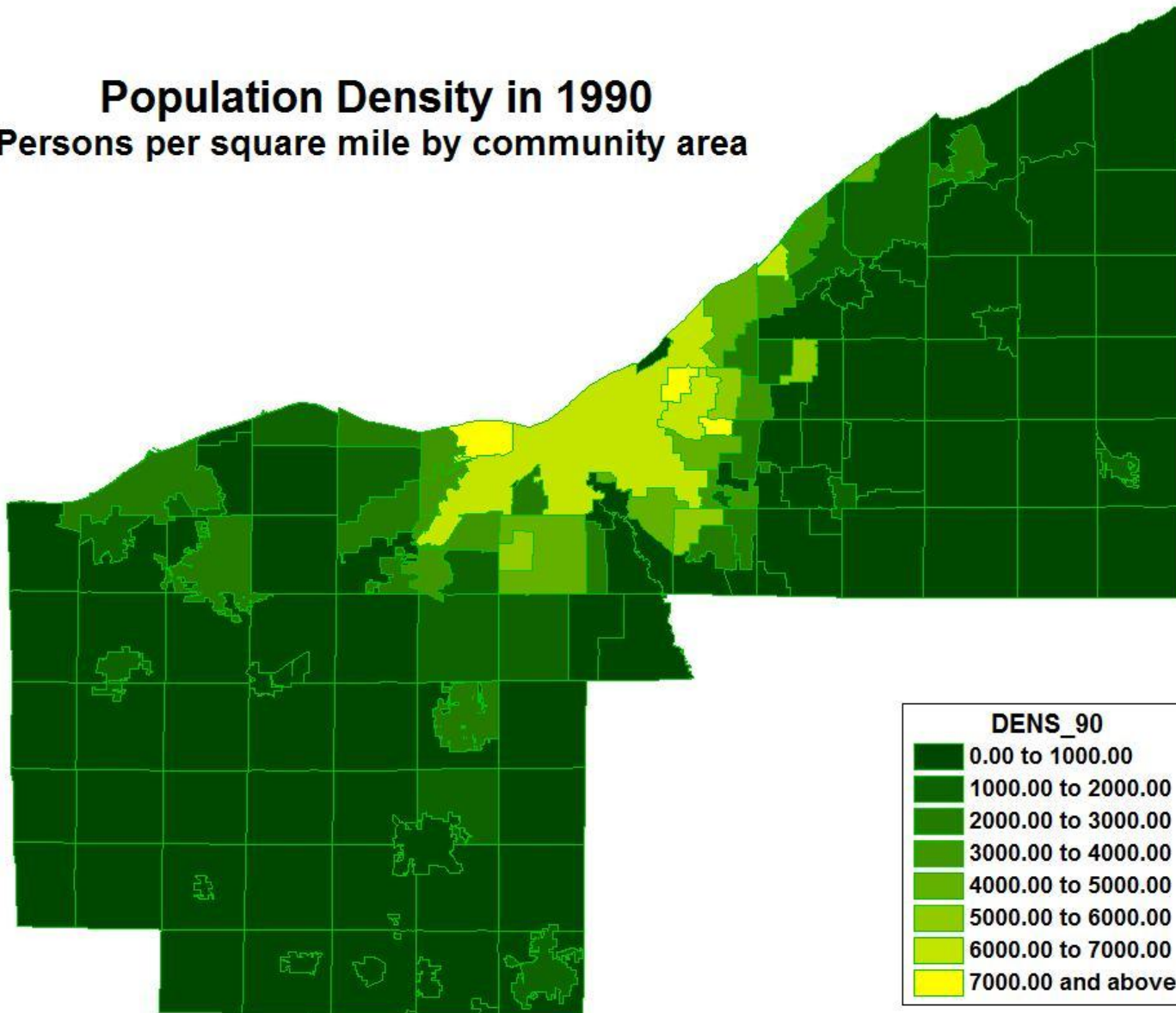
Population Density in 1980

Persons per square mile by community area



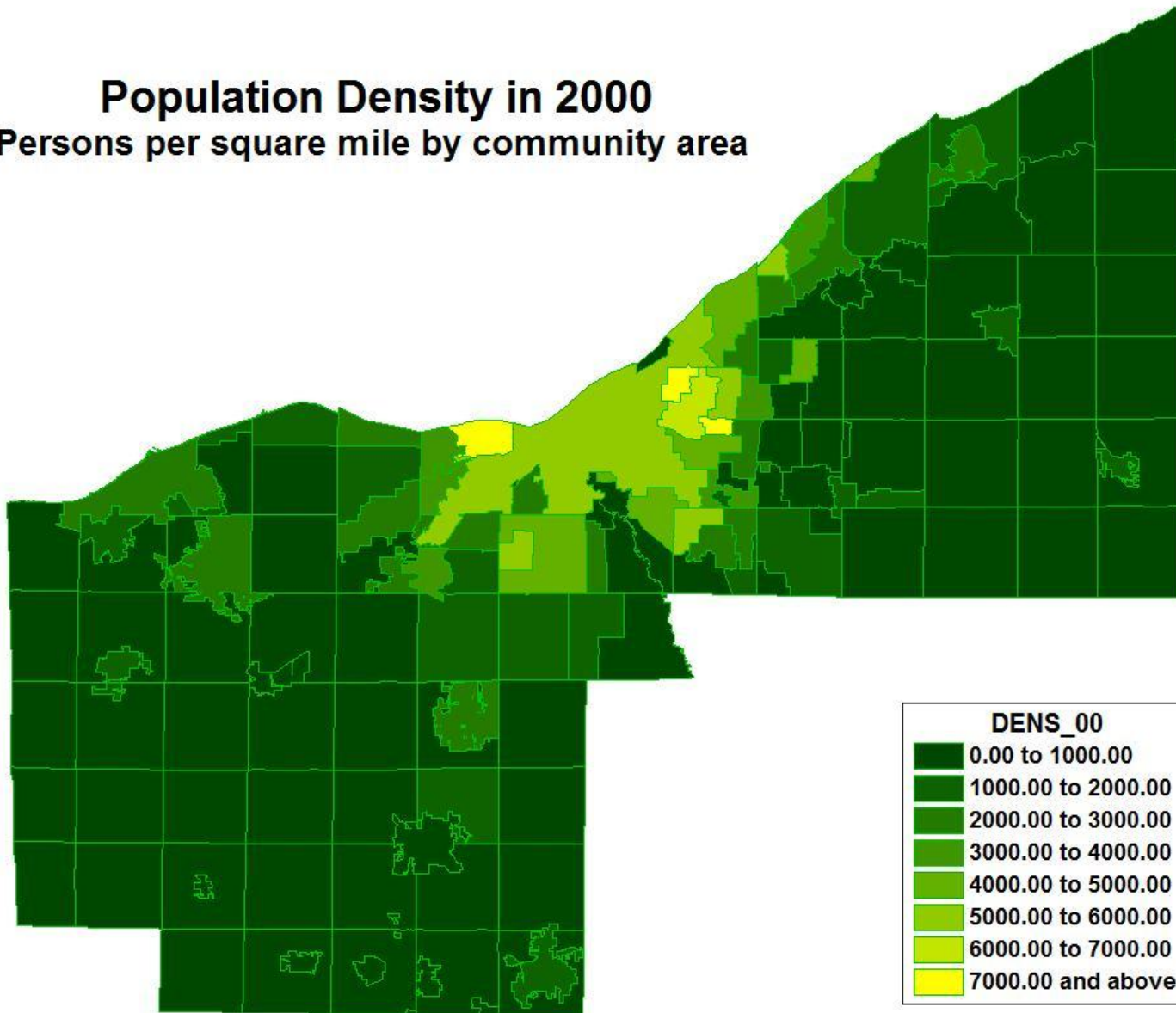
Population Density in 1990

Persons per square mile by community area



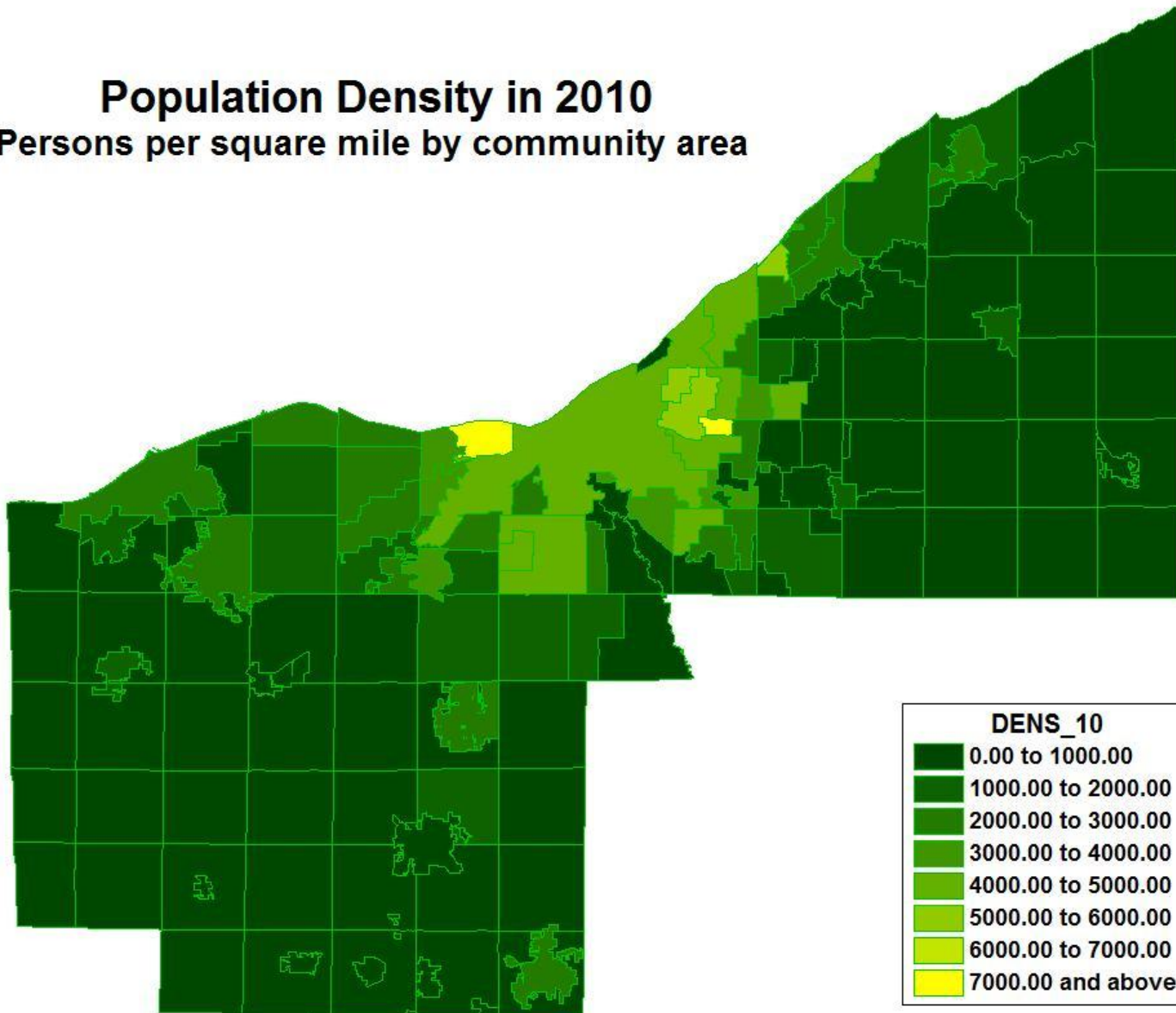
Population Density in 2000

Persons per square mile by community area



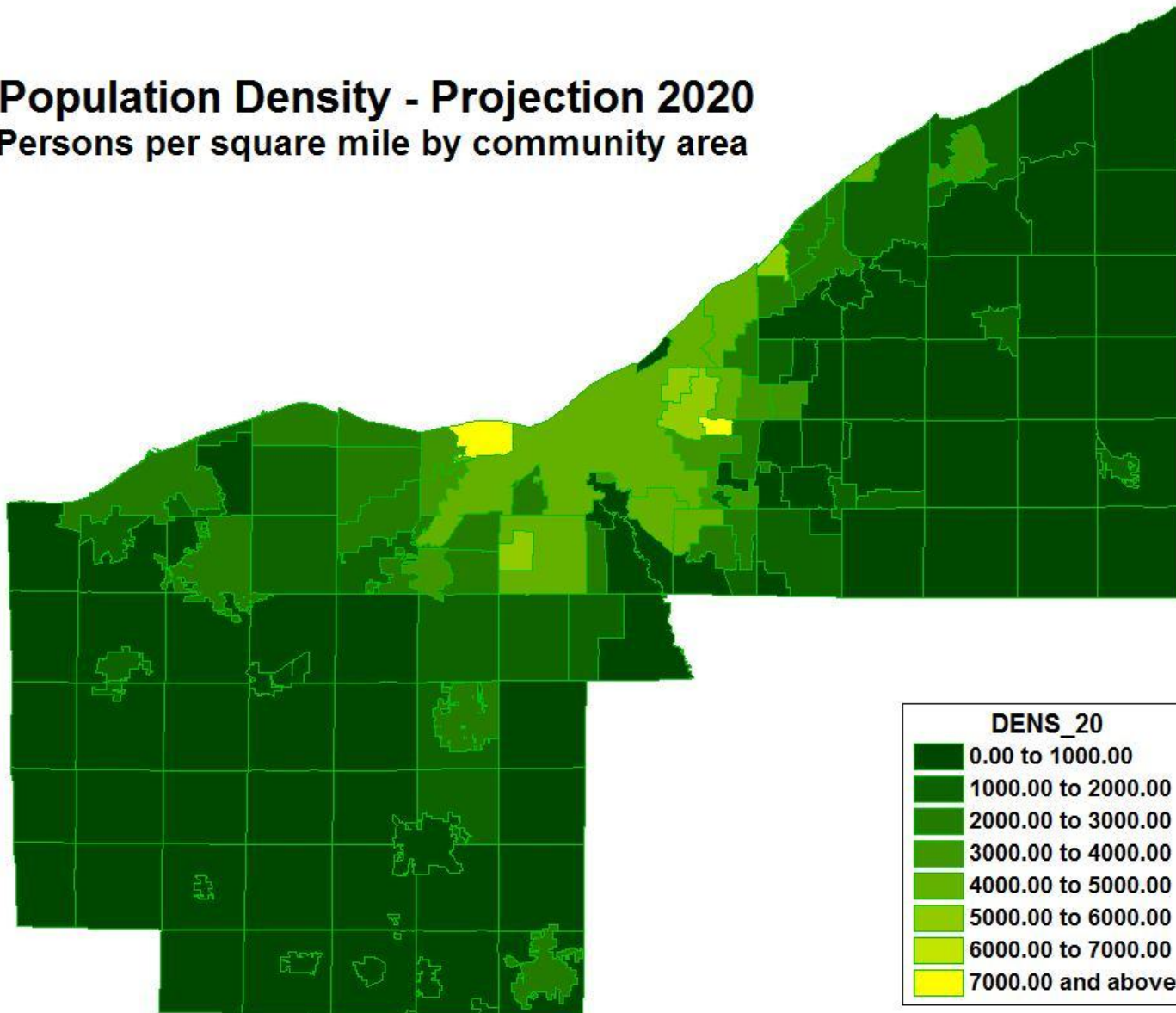
Population Density in 2010

Persons per square mile by community area



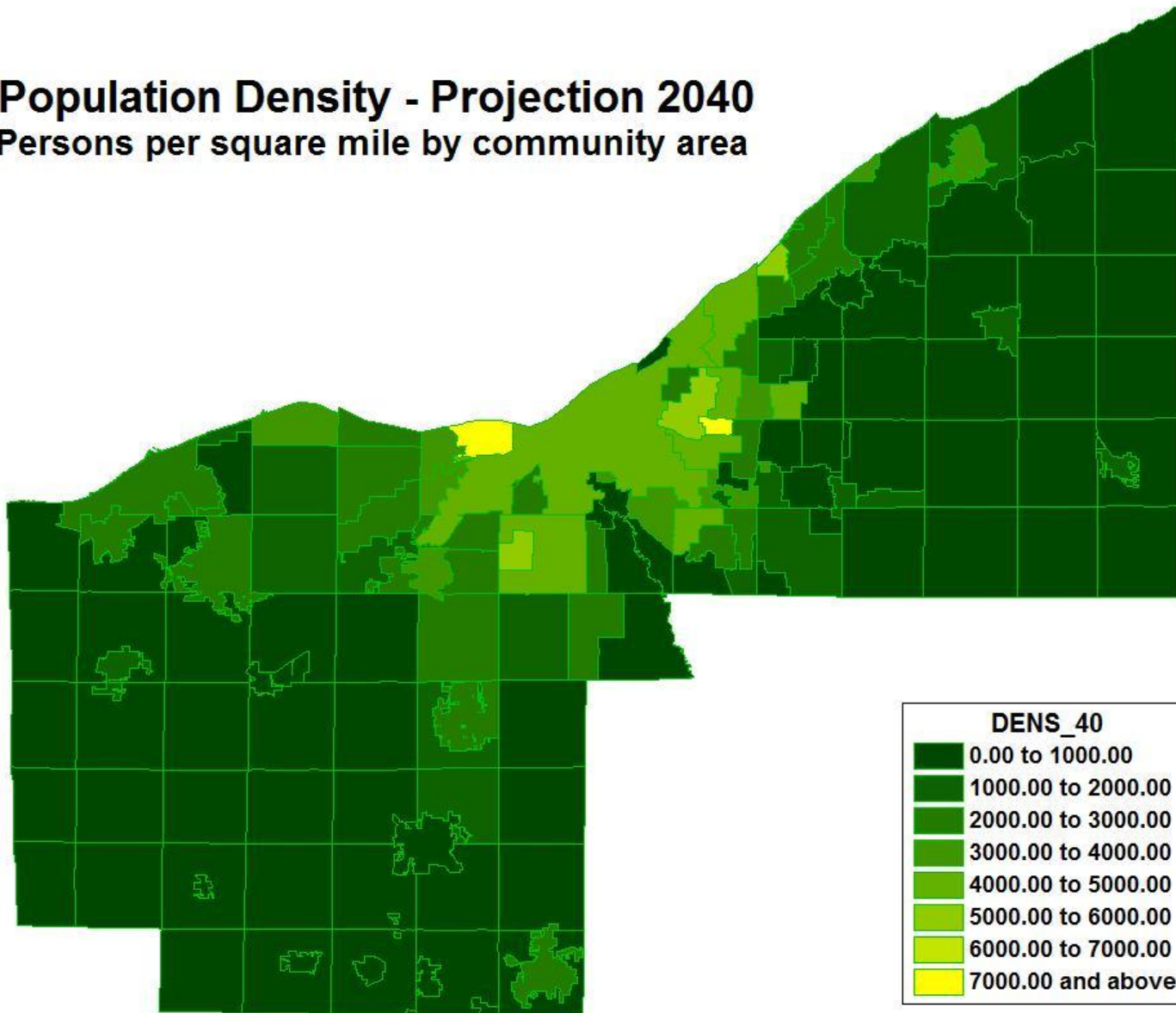
Population Density - Projection 2020

Persons per square mile by community area

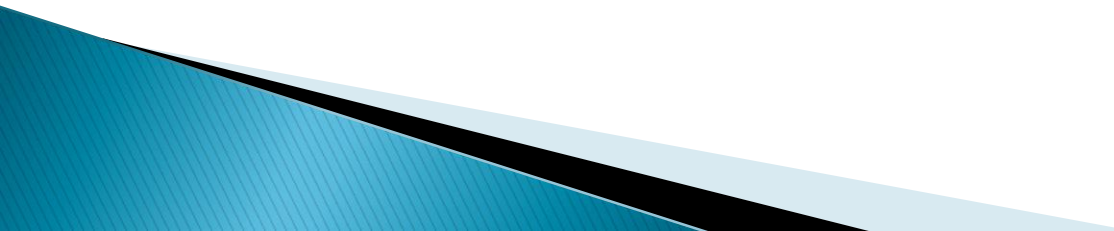


Population Density - Projection 2040

Persons per square mile by community area



Socioeconomic Projections

- ▶ Update from Ohio Department of Development (ODOD) projections based on Census 2010
 - ▶ Coordination with NOACA's jurisdictions
- 

Questions?

Adiyana Sharag-Eldin

Senior Planner

216-241-2414, ext. 353

aeldin@mpo.noaca.org