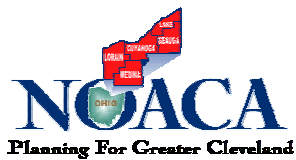


NOACA

Technical Memorandum

2000 Census Urban Boundaries
Adjusted in the NOACA Region

July 2003





The Northeast Ohio Areawide Coordinating Agency (NOACA) is a public Organization serving the counties of and municipalities & townships within Cuyahoga, Geauga, Lake, Lorain and Medina (covering an area with 2.1 million people). NOACA is the agency designated or recognized to perform the following functions:

- **Serve as the Metropolitan Planning Organization (MPO), with responsibility for comprehensive cooperative and continuous planning for highways, public transit, and bikeways, as defined in the Transportation Equity Act for the 21st Century.**
- **Perform continuous water quality, transportation-related air quality and other environmental planning functions.**
- **Administer the area clearinghouse function, which includes providing local government with the opportunity to review a wide variety of local or state applications for federal funds.**
- **Conduct transportation and environmental planning and related demographic, economic and land use research.**
- **Serve as an information center for transportation and environmental and related planning.**
- **At NOACA Governing Board direction, provide transportation and environmental planning assistance to the 172 units of local, general purpose government.**

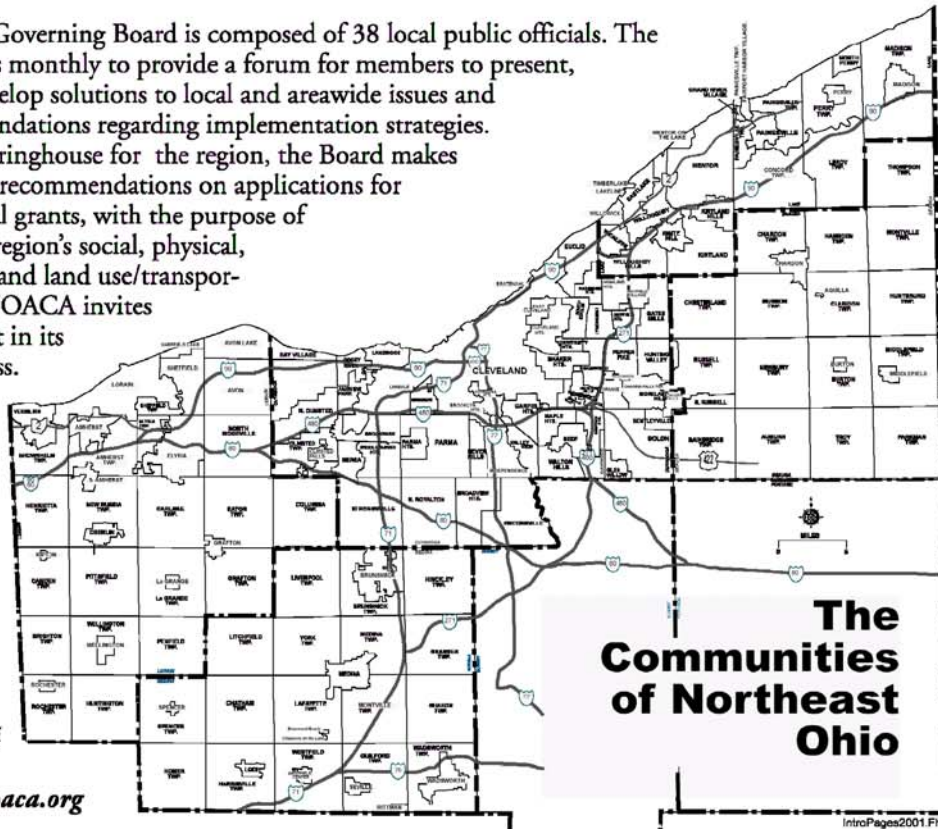
The NOACA Governing Board is composed of 38 local public officials. The Board convenes monthly to provide a forum for members to present, discuss and develop solutions to local and areawide issues and make recommendations regarding implementation strategies. As the area clearinghouse for the region, the Board makes comments and recommendations on applications for state and federal grants, with the purpose of enhancing the region's social, physical, environmental and land use/transportation fabric. NOACA invites you to take part in its planning process.

Feel free to participate, to ask questions and to learn more about areawide planning. For more information, call:

(216) 241-2414

or log on at:

<http://www.noaca.org>



IntroPages2001 F#8

2003 BOARD MEMBERS

President: Betty C. Blair, Lorain County Commissioner
First Vice-President: Daniel P. Troy, Lake County Commissioner
Second Vice-President: Robert C. Klaiber, P.E., P.S., Cuyahoga County Engineer
Secretary: Mark Ricchiuto, Director of Public Services, City of Cleveland
Treasurer: Stephen D. Hambley, President, Medina County Board of Commissioners

Assistant Secretary: J. Timothy McCormack, Cuyahoga County Commissioner
Assistant Secretary: William M. Grace, Mayor City of Elyria (Lorain County)
Assistant Treasurer: James R. Gills, P.E., P.S., Lake County Engineer
Assistant Treasurer: Erwin J. Odeal, Director of NEORS (Cuyahoga County)

Members:

Cuyahoga County

Leo Bender, Mayor, City of Broadview Heights
Lydia F. Champlin, Mayor, Chagrin Falls Village
Jimmy Dimora, President, Cuyahoga County Board of Commissioners
Robert C. Downey, City Manager, City of Cleveland Heights
Walter F. Ehrnfelt, Mayor, City of Strongsville
Peter Lawson Jones, Cuyahoga County Commissioner
Robert C. Klaiber, P.E., P.S., Cuyahoga County Engineer
John T. Kocevar, Mayor, City of South Euclid
J. Timothy McCormack, Cuyahoga County Board of Commissioners
Kenneth Patton, Mayor, City of Brooklyn
Deborah Sutherland, Mayor, City of Bay Village

City of Cleveland

Jane Campbell, Mayor, City of Cleveland
Joseph Cimperman, Councilman, City of Cleveland
Roosevelt Coats, Councilman, City of Cleveland
Mark Ricchiuto, Director of Public Services, City of Cleveland
Chris Ronayne, Director, City of Cleveland Planning Commission
Edward W. Rybka, Councilman, City of Cleveland

Lake County

Robert E. Afuldish, President, Lake County Board of Commissioners
James Gills, P.E., Lake County Engineer
Rita C. McMahon, City Manager, City of Painesville
Raymond E. Sines, Lake County Commissioner
Daniel P. Troy, Lake County Commissioner

Geauga County

Neil C. Hofstetter, Geauga County Commissioner
William M. Repke, President, Geauga County Board of Commissioners
William J. Young, Geauga County Commissioner

Lorain County

Robert J. Berner, Mayor, Avon Lake
Betty C. Blair, Lorain County Commissioner
Kenneth P. Carney, Sr., P.E., P.S., Lorain County Engineer
Craig Foltin, Mayor, City of Lorain
William M. Grace, Mayor, City of Elyria
David J. Moore, Lorain County Commissioner
Kenneth W. Roth, Trustee, Columbia Township

Medina County

James Dudek, Trustee of Sharon Township
Chris Easton, Assistant Director, Public Services, City of Wadsworth
Stephen D. Hambley, President, Medina County Board of Commissioners

Northeast Ohio Regional Sewer District (NEORS)

Erwin J. Odeal, Director

The Greater Cleveland Regional Transit Authority (GCRTA)

George M. Dixon, Board President

The Ohio Department of Transportation (ODOT)

David J. Coyle, Deputy Director, ODOT District 12

Ex officio Member:

William T. Skowronski, Chief, Northeast District Office
Ohio Environmental Protection Agency

NOACA Transportation Advisory Committee

Chairperson: Kenneth P. Carney, Sr., P.E., P.S., Lorain County Engineer

Cuyahoga County

Paul A. Alsenas, Director, Cuyahoga County Planning Commission
Joseph A. Calabrese, General Manager, GCRTA
Joseph Cimperman, Councilman, City of Cleveland
Randall DeVaul, P.E., Commissioner, Cleveland Div. of Eng. & Cons.
Jimmy Dimora, President, Cuyahoga County Board of Commissioners
Robert C. Downey, City Manager, City of Cleveland Heights
Walter F. Ehrnfelt, Mayor, City of Strongsville
Robert C. Klaiber, Jr., P.E., P.S., Cuyahoga County Engineer
Rob Mavec, Commissioner, Cleveland Traffic Engineering
J. Timothy McCormack, Cuyahoga County Commissioner
Chris Ronayne, Director, City of Cleveland Planning Commission

Lake County

Robert E. Afuldish, President, Lake County Board of Commissioners
James Gills, P.E., P.S., Lake County Engineer
Raymond Jurkowski, General Manager, LAKETRAN
Rita C. McMahon, City Manager, City of Painesville
Darrell Webster, Director, Lake County Planning Commission

Lorain County

Betty C. Blair, Lorain County Commissioner
Kenneth P. Carney, Sr., P.E. Lorain County Engineer
William M. Grace, Mayor, City of Elyria
Debbie Mohr, General Manager, Lorain County Transit
Ronald Twining, Director, Lorain County Planning Commission

Geauga County

David Dietrich, Director, Geauga County Planning Commission
Neil C. Hofstetter, Geauga County Commissioner
William Kelly, General Manager, Geauga County Transit
R.L. Phillips, P.E., Geauga County Engineer

Medina County

Chris Easton, Assistant Director, Public Services, City of Wadsworth
Stephen D. Hambley, President, Medina County Board of Commissioners
John Jones, General Manager, Medina County Transit
David L. Miller, P.E., Medina County Engineer
Patrice Theken, Director, Medina County Planning Commission

Other Voting Members: District Deputy Directors:

David J. Coyle (ODOT-12); Thomas O'Leary (ODOT-3)
William T. Skowronski, Chief, Northeast District Office Ohio EPA

NOACA Transportation Advisory Committee (Continued)

Private Sector Voting Members:

Eric Barbe, Euclid Precision Grinding Company, Inc. (Lake County)
Frank Detillio, President, Lorain County Chamber of Commerce (Lorain County)
James Douth, Executive Director, Medina County Economic Development Corporation (Medina County)
David Goss, Director, Greater Cleveland Growth Association (Cuyahoga County)
Jeffrey R. Huntsberger, Esquire (Geauga County)

Non-voting members:

Dennis Decker, FHWA Ohio Division Administrator
Gary L. Failor, Cleveland-Cuyahoga County Port Authority
John Mok, Director, Cleveland Department of Port Control, Cleveland Hopkins International Airport
Ernest Gubry, Federal Aviation Administration
Richard Novak, Lorain Port Authority
William Schuster, Fairport Harbor Port Authority
Gary Suhadolnik, Executive Director, Ohio Turnpike Commission

Environmental Advisory Committee

Chairperson: Stephen D. Hambley, President, Medina County Board of Commissioners

Air Quality Subcommittee Chair: Stephen D. Hambley, President, Medina County Board of Commissioners

Water Quality Subcommittee Chair: Stephen D. Hambley, Medina County Board of Commissioners

Cuyahoga County

Darnell Brown, City of Cleveland, Commissioner of Water Pollution Control
Joseph Cimperman, Councilman, City of Cleveland
Jimmy Dimora, President, Cuyahoga County Board of Commissioners
Tim Horgan, Cuyahoga County Health Commissioner
John T. Kocevar, Mayor, City of South Euclid
Ruth Langsner (*representing Sanitary Engineers*)
Erwin J. Odeal, Director, NEORS
Jim Storer, Cuyahoga County Soil and Water Conservation District (*representing Soil and Water Conservation Districts*)
Cleveland Health Director (To be determined)

Lake County

James Gills, P.E., P.S., Lake County Engineer
Frank Kellogg, Lake County Environmental Health Director (*representing Local Air Agencies*)
Daniel P. Troy, Lake County Commissioner

Lorain County

Betty C. Blair, Lorain County Commissioner
David J. Moore, President, Lorain County Board of Commissioners
Ken Pearce, Lorain County Health Commissioner (*representing Health Districts*)

Medina County

Stephen D. Hambley, President, Medina County Board of Commissioners

Geauga County

Neil C. Hofstetter, Geauga County Board of Commissioners

Non-Voting Members:

David J. Coyle, Deputy Director, ODOT District 12
William T. Skowronski, Chief, Northeast District Office, Ohio Environmental Protection Agency

Planning Advisory Committee

Chairperson: Rita C. McMahon, City Manager, City of Painesville

Paul A. Alsenas, Director, Cuyahoga County Planning Commission
David Dietrich, Director, Geauga County Planning Commission
Chris Ronayne, Director, City of Cleveland Planning Commission

Patrice Theken, Director, Medina County Planning Commission
Ronald Twining, Director, Lorain County Planning Commission
Darrell Webster, Director, Lake County Planning Commission

NOACA Directors:

Howard R. Maier, Executive Director

Ronald T. Eckner, P. E., Director of Transportation Planning
John Hosek, Director of Transportation Programs

John Beeker, Ph.D., Director of Environmental Planning
Stephen E. DeJohn, Esq., Legal Counsel/Director of Human Resources
Cheryl A. Kurkowski, CPA, Director of Finance & Operations
Jamy Wheeler, Director of Planning & Administrative Services

Communication Coordinators:

Sharon Hosek
Cheryl Onesky

<p>1) Title & Subtitle</p> <p>2000 Census Urban Boundaries Adjusted in the NOACA Region</p>	<p>2) NOACA Report No.</p> <p>TM-03-05</p>
<p>3) Author(s) Gary Grano</p> <p>Contributors: Joe Cole, Dave Owens</p>	<p>4) Report Date</p> <p>July 2003</p>
<p>5) Performing Organization Name & Address</p> <p>Northeast Ohio Areawide Coordinating Agency 1299 Superior Avenue, Cleveland, OH 44114-3204 Phone: (216) 241-2414 FAX: (216) 621-3024 Web site: www.noaca.org</p>	<p>6) Project Task No.</p> <p>6050-1 (FY 2003)</p>
	<p>7) NOACA Contract/Grant No.</p> <p>ODOT/FHWA</p>
<p>8) Sponsoring Agency Name & Address</p> <p>Ohio Department of Transportation 1980 W. Broad St., Box 899 Columbus, OH 43216-0899</p>	<p>9) Type of Report & Period Covered (July 1 2002 – June 30 2003)</p>
	<p>10) Sponsoring Agency Code</p>
<p>11) Supplementary Notes</p> <p>Federal funding for this project was provided by the Federal Highway Administration and administered by the Ohio Department of Transportation.</p>	
<p>12) Abstracts</p> <p>This memorandum looks at the census defined urbanized area and makes logical adjustments to this irregular boundary. This smoothing process is done only to make the functional classification update an easier process. This boundary adjustment has no impact on funding to the NOACA region.</p>	
<p>13) Key Words & Document Analysis</p> <p>A. Descriptors 2000 Census, Urbanized Area, Functional Classification Update</p> <p>B. Identifiers/Open Ended Terms</p>	
<p>14) Availability Statement</p> <p>NOACA</p>	<p>15) No. Pages</p> <p>9</p>
	<p>16) Price</p>

2000 Census Urban Boundaries Adjusted in the NOACA Region

July 2003

Prepared by

NORTHEAST OHIO AREAWIDE COORDINATING AGENCY

Principal Author:

Gary Grano

BETTY C. BLAIR
BOARD PRESIDENT

HOWARD R. MAIER
EXECUTIVE DIRECTOR

The preparation of this publication was financed through grants received from the Federal Highway Administration and the Ohio Department of Transportation and appropriations from the counties of and municipalities within Cuyahoga, Geauga, Lake, Lorain and Medina. The contents do not necessarily reflect official views or policies of the U.S. Department of Transportation or the Ohio Department of Transportation. This report does not constitute a standard or regulation.

Abstract

Following each ten-year Census, the United States Census Bureau establishes urbanized areas based mainly upon population density criteria. These urbanized areas established by the Census Bureau may have irregular or jagged boundaries. Subsequently, local officials are given the opportunity to review the boundaries and adjust them to allow for better administrative continuity along roadways. Thus an irregular boundary may be “smoothed” or adjusted. These adjusted urban boundaries will be used to help update the federal-aid functional classification system, expected to begin in August 2003. This adjustment process also does not affect federal-aid funds to the NOACA region.

Following each ten-year census the U.S. Census Bureau establishes Urbanized Areas based on certain criteria. The criteria used for the 2000 census urbanized areas are as follows:

- Core census block groups or census blocks that have a population density of at least 1,000 people per square mile.
- Surrounding census blocks that have an overall density of at least 500 people per square mile.

Following the establishment of the Census defined urbanized area; local officials (from Ohio Department of Transportation (ODOT), MPO's, Counties, Cities, Villages and Townships) have the opportunity to establish an adjusted urban area. This adjustment process smoothes the irregular census-defined boundary. The adjusted Urban Area allows for better administrative continuity along roadways. These adjustments to the census defined urban areas are used only to establish functional classification of the area's roads. The adjusted urban boundary does not affect the amount of Federal-Aid funding into the NOACA region. Highway and Transit funding is based upon the 2000 Census-defined urbanized populations.

ODOT was the lead agency across the state in the boundary adjustment process. ODOT suggested to include at a minimum: 1) 1990 adjusted urban area; and 2) the 2000 census defined urban area that exceeded this boundary. In 1992 the NOACA Governing Board approved Resolution 92-083. This Resolution adopted the adjustments made to the 1990 census defined urban areas and was one of the suggested starting points for the 2000 Census area adjustments. The adjustment process was explained to NOACA's Transportation Advisory Committee (TAC) on October 18, 2002.

NOACA staff along with staff from ODOT District 3 and District 12, and staff from the Akron Metropolitan Area Transportation Study (AMATS) agreed on the areas to include in the adjustment process. ODOT also approached individual communities that were impacted by the adjustments to explain the process. Within NOACA's planning area, adjustments were made to the Cleveland, Lorain-Elyria and Akron census-defined urban areas. Adjustments were also made to the census defined Medina Urban Cluster.

When consensus was reached among NOACA, AMATS and ODOT staff concerning the draft adjusted urban boundaries the information was presented to NOACA's Transportation Advisory Committee (TAC). On June 20, 2003 the TAC recommended the boundary adjustments for Governing Board approval. This information was then presented and approved by the NOACA Governing Board on 7/11/03.

This approval by the NOACA Governing Board sets the stage for the Functional Classification update, which is scheduled to begin in August 2003.

Appendix 1 attached to the end of this report contains two maps. The first shows the 2000 census defined urban boundaries. The second shows the 2000 adjusted urban boundaries.

Appendix 2 has a copy of NOACA Governing Board resolution 2003-043, which adopts the 2000 adjustments to the census defined urban area.

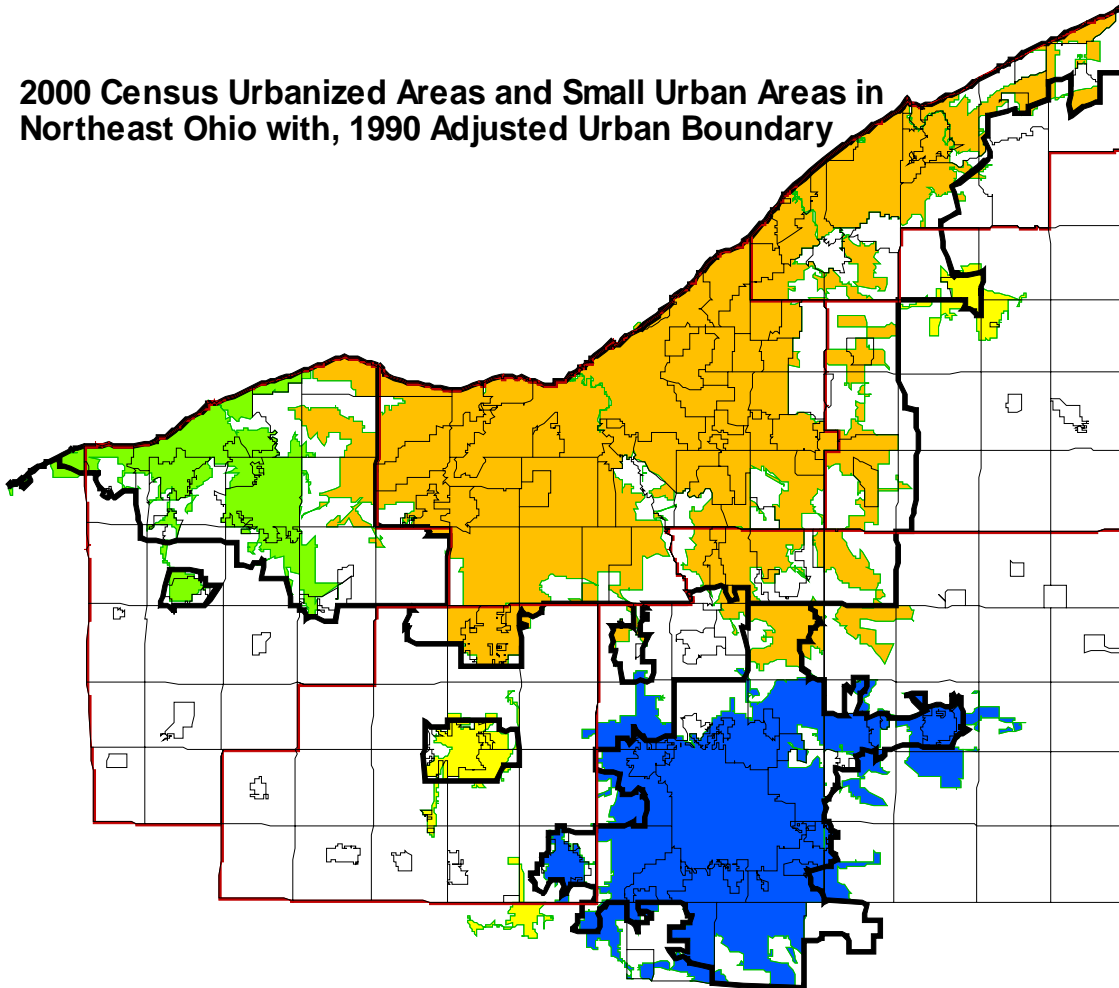
Conclusion

The adjustments made to the census defined urbanized area boundaries occur after each decennial census. This process is undertaken to provide for better administrative continuity along roadways and to aid in the Functional Classification update.

Appendix 1

Map 1

2000 Census Urbanized Areas and Small Urban Areas in Northeast Ohio with, 1990 Adjusted Urban Boundary



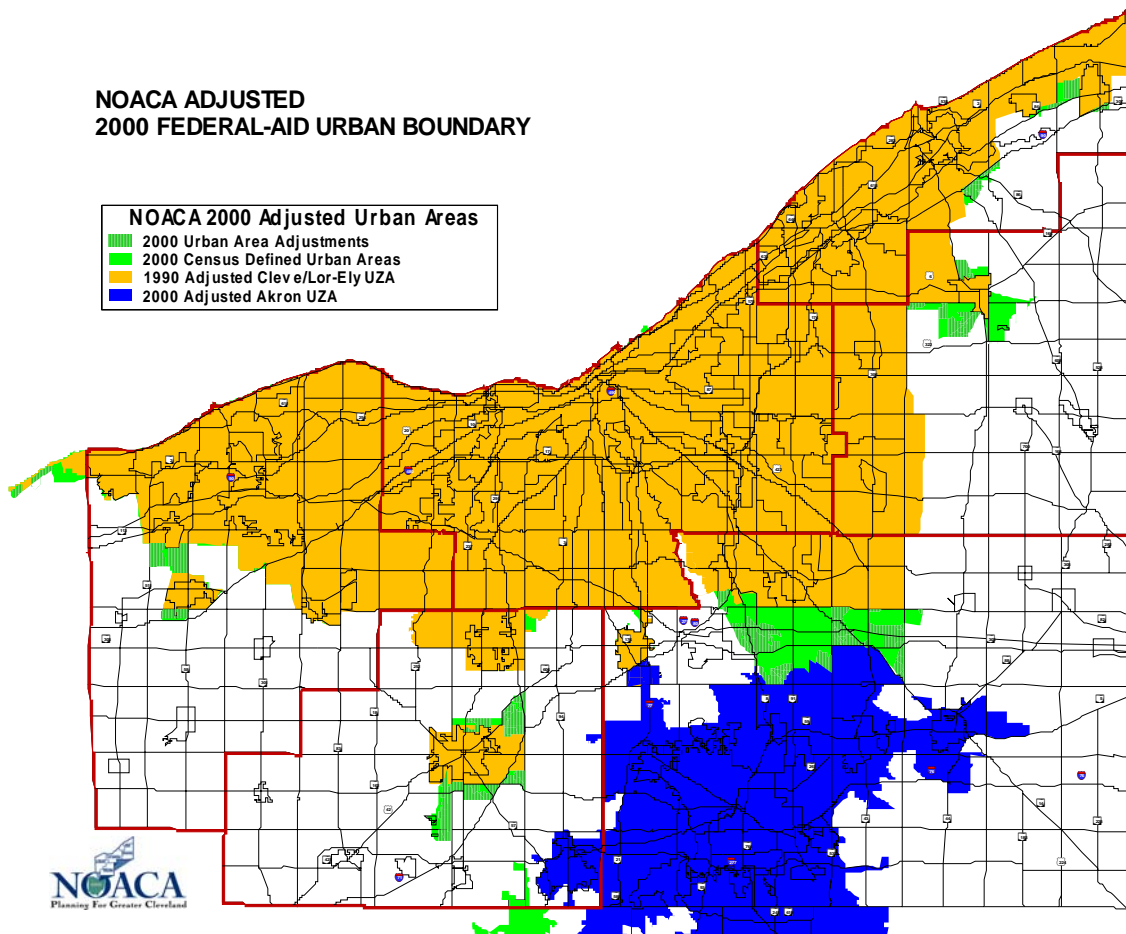
Map1 shows the year 2000 census defined urbanized areas.

- Areas in Green show the Lorain-Elyria Urbanized area.
- Areas in tan show the Cleveland Urbanized area.
- Areas in Blue show the Akron Urbanized area
- Areas in yellow show the Medina, Rittman and Chardon Urban Clusters

Also shown on this map is the 1990 Adjusted Urban Boundary by the thick black line. The basic criteria the Census Bureau uses to define the 2000 urbanized area was;

- Core census block groups or census blocks that have a population greater than 50,000 and a population density of at least 1,000 people per square mile.
- Surrounding census blocks that have an overall density of at least 500 people per square mile.

Map 2



Map two shows the results of the 2000 adjustment process. The tan color on this map shows the 1990 adjusted Cleveland, Lorain-Elyria Urbanized areas. Also shown in tan is 1990 adjusted boundary of the Medina and Oberlin urban clusters. The blue color is the 2000 Akron adjusted Urban Boundary. The adjusted Akron Urbanized Area boundary has been approved by resolution 2003-07 of the Akron Metropolitan Area Transportation Study (AMATS) policy board. The solid green color is where the 2000 census defined urban boundary has exceeded the 1990 adjusted Urban Boundary. The Green Hash-mark color is the 2000 urban boundary adjustments made by NOACA, AMATS and ODOT to smooth the irregularities caused by the solid green census definitions.

Appendix 2

**RESOLUTION NO. 2003-043
(ADJUSTED 2000 URBAN BOUNDARIES IN NOACA'S REGION)**

**RESOLUTION OF THE GOVERNING BOARD
OF THE
NORTHEAST OHIO AREA WIDE COORDINATING AGENCY**

WHEREAS, the Northeast Ohio Areawide Coordinating Agency (NOACA), the Metropolitan Planning Organization (MPO) for the five Northeast Ohio Counties of Cuyahoga, Geauga, Lake, Lorain and Medina, is presently engaged, through Governing Board action and staff technical work, in the continuing phase of the cooperative, comprehensive planning process designed to meet needs, requirements, goals and objectives of national, state and local governmental levels, all within this nation's federal transportation system; and

WHEREAS, the NOACA Governing Board has been given the opportunity by the Ohio Department of Transportation (ODOT) and the Federal Highway Administration (FHWA) to adjust the 2000 Census designated Urban Boundaries within the NOACA Region in order to establish smoother boundaries for the purposes of updating Highway Functional Classifications and Federal-aid Systems; and

WHEREAS, the NOACA region includes the Cleveland, Lorain-Elyria, Akron (in Medina County) urbanized areas and the Urban Clusters of Medina, Rittman and Chardon; and

WHEREAS, NOACA staff has received suggestions by ODOT for adjusting the 2000 census designated Urban Boundaries; and

WHEREAS, NOACA staff members met with staff members from AMATS, ODOT Districts 3 and 12 to coordinate where the adjustments to the Census defined Urban Boundaries are to be made; and

WHEREAS, NOACA staff has applied the ODOT suggestions to the 2000 Census designated Urban Boundaries and made other modifications to develop a 2000 adjusted Urban Boundaries for the NOACA region.

NOW, THEREFORE, BE IT RESOLVED by the Governing Board of the Northeast Ohio Areawide Coordinating Agency

Section 1: The attached map be approved as the best and most representative description of the 2000 adjusted Urban Areas within the five counties of Cuyahoga, Geauga, Lake, Lorain and Medina.

Section 2: The NOACA Governing Board concurs with the boundary adjustments for the Cleveland Urbanized Area adopted by the AMATS policy committee in Summit and Portage Counties.

RESOLUTION NO. 2003-043
(ADJUSTED 2000 URBAN BOUNDARIES IN NOACA's REGION)

Section 3: The NOACA Governing Board concurs with the boundary adjustments for the Lorain-Elyria Urbanized Area proposed by ODOT in Erie County.

Section 4: The NOACA Governing Board shall review and further modify said Urbanized boundaries at such time as review and recommendation warrant.

Section 5: the Executive Director be and is hereby authorized to transmit a certified copy of this resolution to appropriate State and Federal agencies.

Certified to be a true copy of a Resolution of the Governing
Board of the Northeast Ohio Areawide Coordinating
Agency adopted this 11th day of July, 2003.

Secretary: Betty Blair
Date Signed: 7-11-03